

LISTA DE APLICACIONES - BUYERS GUIDE

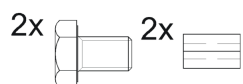
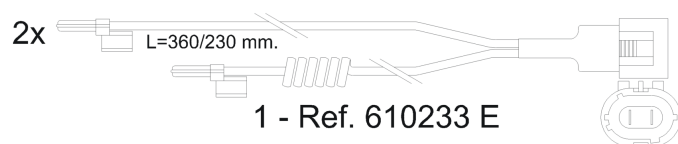
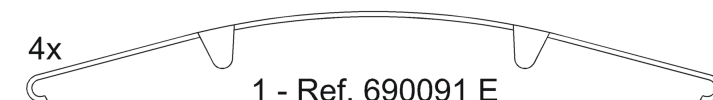
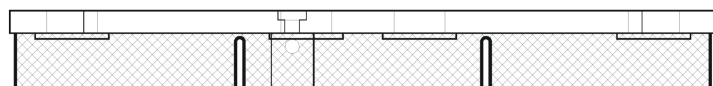
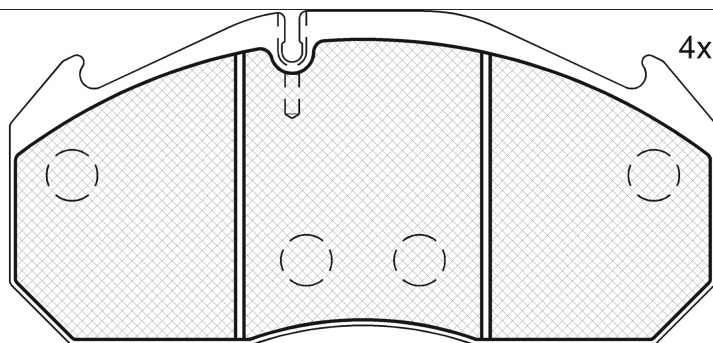
151040-114



Qty: 660

Weight: 10.780

O.E.M.	MAKE
5001823000	RENAULT TRUCKS
5001854342	RENAULT TRUCKS
81508205091	MAN
8150820646	MAN



1 - Ref. 690123 E



1 - Ref. 690127 E

151040-114



90R-01178/660



Lucas-Meritor D3 -D Elsa

249.6x118.2x28

WVA

29030

MAKE

MAN

RENAULT TRUCKS



Trac.

CC

Kw

CV



Front / Rear

MAN

E2000 08.97-

Dump Truck

Model	Engine	Trac.	CC	Kw	CV	05.00-	05.00-	05.00-	05.00-
19.310 FLK (D 2866 LF23)	Diesel		11967	228	310	05.00-	■	■	
26.310 FAVLK (D 2866 LF23)	Diesel		11967	228	310	05.00-	■	■	
19.360 FLK (D 2866 LF24)	Diesel		11967	265	360	05.00-	■	■	
26.360 FAVLK (D 2866 LF24)	Diesel		11967	265	360	05.00-	■	■	
28.360 FANLK (D 2866 LF24)	Diesel		11967	265	360	05.00-	■	■	
33.360 DFAK, DFALK (D 2866 LF24)	Diesel		11967	265	360	05.00-	■	■	
19.410 FLK (D 2866 LF25)	Diesel		11967	301	410	05.00-	■	■	
26.410 FAVLK (D 2866 LF25)	Diesel		11967	301	410	05.00-	■	■	
28.410 FANLK (D 2866 LF25)	Diesel		11967	301	410	05.00-	■	■	
30.410 FANLK (D 2866 LF25)	Diesel		11967	301	410	05.00-	■	■	
32.410 VFARK (D 2866 LF25)	Diesel		11967	301	410	05.00-	■	■	
33.410 DFAK, DFALK (D 2866 LF25)	Diesel		11967	301	410	05.00-	■	■	
50.410 VFAVK, VFAVK-HK, VFAV-G (D 2866 LF25)	Diesel		11967	301	410	03.01-	■	■	
19.460 FLK (D 2876 LF 03)	Diesel		12816	338	460	05.00-	■	■	
26.460 FAVLK (D 2876 LF 03)	Diesel		12816	338	460	05.00-	■	■	
28.460 FANLK (D 2876 LF 03)	Diesel		12816	338	460	05.00-	■	■	
30.460 FANLK (D 2876 LF 03)	Diesel		12816	338	460	05.00-	■	■	
33.460 DFAK, DFALK (D 2876 LF 03)	Diesel		12816	338	460	05.00-	■	■	
50.460 VFAVK, VFAV-G, VFAVK-HK (D 2876 LF 03)	Diesel		12816	338	460	03.01-	■	■	

E2000 08.97-

Platform/Chassis

Model	Engine	Trac.	CC	Kw	CV	05.00-	05.00-	05.00-	05.00-
28.310 FNLC (D 2866 LF23)	Diesel		11967	228	310	05.00-	■	■	
28.310 FNLC	Diesel		11967	228	310	05.00-	■	■	

LISTA DE APLICACIONES - BUYERS GUIDE

28.310 FNLC		Diesel		11967	228	310	05.00-	■	■
30.310 FNLC (D 2866 LF23)		Diesel		11967	228	310	05.00-	■	■
32.310 VFLC (D 2866 LF23)		Diesel		11967	228	310	05.00-	■	■
32.310 VFNLC (D 2866 LF23)		Diesel		11967	228	310	05.00-	■	■
32.310 VFNLC (D 2866 LF23)		Diesel		11967	228	310	05.00-	■	■
28.360 FANLC (D 2866 LF24)		Diesel		11967	265	360	05.00-	■	■
28.360 FNALC (D 2866 LF24)		Diesel		11967	265	360	05.00-	■	■
28.360 FNLC (D 2866 LF24)		Diesel		11967	265	360	05.00-	■	■
28.360 FNLC		Diesel		11967	265	360	05.00-	■	■
28.360 FNLC		Diesel		11967	265	360	05.00-	■	■
30.360 FNLC (D 2866 LF24)		Diesel		11967	265	360	05.00-	■	■
32.360 VFLC (D 2866 LF24)		Diesel		11967	265	360	05.00-	■	■
32.360 VFNLC (D 2866 LF24)		Diesel		11967	265	360	05.00-	■	■
32.360 VFNLC (D 2866 LF24)		Diesel		11967	265	360	05.00-	■	■
33.360 DFALC (D 2866 LF24)		Diesel		11967	265	360	05.00-	■	■
28.410 FANLC (D 2866 LF25)		Diesel		11967	301	410	05.00-	■	■
28.410 FNLC (D 2866 LF25)		Diesel		11967	301	410	05.00-	■	■
28.410 FNLC		Diesel		11967	301	410	05.00-	■	■
28.410 FNLC		Diesel		11967	301	410	05.00-	■	■
30.410 FANLC (D 2866 LF25)		Diesel		11967	301	410	05.00-	■	■
30.410 FNLC (D 2866 LF25)		Diesel		11967	301	410	05.00-	■	■
32.410 VFLC,VFRC, VFLRC (D 2866 LF25)		Diesel		11967	301	410	05.00-	■	■
32.410 VFNLC (D 2866 LF25)		Diesel		11967	301	410	05.00-	■	■
32.410 VFNLC (D 2866 LF25)		Diesel		11967	301	410	05.00-	■	■
33.410 DFALC (D 2866 LF25)		Diesel		11967	301	410	05.00-	■	■
35.410 FVNLC (D 2866 LF25)		Diesel		11967	301	410	05.00-	■	■
35.410 FVNLC (D 2866 LF25)		Diesel		11967	301	410	05.00-	■	■
28.460 FANLC (D 2876 LF 03)		Diesel		12816	338	460	05.00-	■	■
28.460 FNLC (D 2876 LF 03)		Diesel		12816	338	460	05.00-	■	■
28.460 FNLC		Diesel		12816	338	460	05.00-	■	■
28.460 FNLC		Diesel		12816	338	460	05.00-	■	■
30.460 FANLC (D 2876 LF 03)		Diesel		12816	338	460	05.00-	■	■
30.460 FNLC (D 2876 LF 03)		Diesel		12816	338	460	05.00-	■	■
32.460 VFARK		Diesel		12816	338	460	05.00-	■	■
32.460 VFLC, VFLRC (D 2876 LF 03)		Diesel		12816	338	460	05.00-	■	■
32.460 VFNLC (D 2876 LF 03)		Diesel		12816	338	460	05.00-	■	■
32.460 VFNLC (D 2876 LF 03)		Diesel		12816	338	460	05.00-	■	■
33.460 DFALC (D 2876 LF 03)		Diesel		12816	338	460	05.00-	■	■
35.460 FVNLC (D 2876 LF 03)		Diesel		12816	338	460	05.00-	■	■
35.460 FVNLC (D 2876 LF 03)		Diesel		12816	338	460	05.00-	■	■
E2000 08.97-					Platform/Chassis				
28.230 FNLC (E 2866 DF 01)		Gasolina		11967	170	231	05.00-	■	■
28.230 FNLC		Gasolina		11967	170	231	05.00-	■	■
E2000 08.97-					Truck Tractor				
19.310 FLS (D 2866 LF23)		Diesel		11967	228	310	05.00-	■	■
19.360 FLS (D 2866 LF24)		Diesel		11967	265	360	05.00-	■	■
33.360 DFALS (D 2866 LF24)		Diesel		11967	265	360	04.01-	■	■
19.410 FLS (D 2866 LF25)		Diesel		11967	301	410	05.00-	■	■
33.410 DFALS (D 2866 LF25)		Diesel		11967	301	410	04.01-	■	■
19.460 FLS (D 2876 LF 03)		Diesel		12816	338	460	05.00-	■	■
29.460 FVAS (D 2876 LF 03)		Diesel		12816	338	460	05.00-	■	■

LISTA DE APLICACIONES - BUYERS GUIDE

33.460 DFALS (D 2876 LF 03)	Diesel		12816	338	460	04.01-	■	■
41.460 DFVS, DFVLS (D 2876 LF 03)	Diesel		12816	338	460	06.00-	■	■
41.600 DFVS, DFVLS (D 2840 LF21)	Diesel		18273	441	600	06.00-	■	■
F2000 01.94-				Concrete Mixer				
26.314 DF-TM (D 2866 LF23)	Diesel		11967	228	310	05.01-	■	■
27.314 DF-TM	Diesel		11967	228	310	05.01-	■	■
32.314 VF-TM (D 2866 LF23)	Diesel		11967	228	310	05.01-	■	■
35.314 VF-TM	Diesel		11967	228	310	03.02-	■	■
26.364 DF-TM (D 2866 LF24)	Diesel		11967	265	360	05.01-	■	■
27.364 DF-TM	Diesel		11967	265	360	05.01-	■	■
32.364 VF-TM (D 2866 LF24)	Diesel		11967	265	360	05.01-	■	■
35.364 VF-TM (D 2866 LF24)	Diesel		11967	265	360	03.02-	■	■
27.373 DF-TM	Diesel		11967	272	370	07.00-	■	■
27.403 DF-TM	Diesel		11967	294	400	07.00-	■	■
26.414 DF-TM (D 2866 LF25)	Diesel		11967	301	409	05.01-	■	■
27.414 DF-TM	Diesel		11967	301	409	05.01-	■	■
32.414 VF-TM (D 2866 LF25)	Diesel		11967	301	409	05.01-	■	■
35.414 VF-TM (D 2866 LF25)	Diesel		11967	301	409	03.02-	■	■
27.423 DF-TM	Diesel		11967	309	420	07.00-	■	■
26.464 DF-TM (D 2876 LF 03)	Diesel		12816	338	460	05.01-	■	■
27.463 DF-TM	Diesel		12816	338	460	07.00-	■	■
27.464 DF-TM	Diesel		12816	338	460	05.01-	■	■
32.464 VF-TM (D 2876 LF 03)	Diesel		12816	338	460	05.01-	■	■
35.464 VF-TM (D 2876 LF 03)	Diesel		12816	338	460	03.02-	■	■
F2000 01.94-				Dump Truck				
19.314 FAK, FA-KI, FAK-L	Diesel		11967	228	310	05.01-	■	■
19.314 FK, FK-L, F-KI, FL-KI, F-NL, FLK (D 2866 LF34)	Diesel		11967	228	310	06.94-02.05	■	■
26.314 DFK, DFLK, DFLK-L (D 2866 LF23)	Diesel		11967	228	310	05.01-	■	■
27.314 DFAK, DFA-KI, DFAK-L	Diesel		11967	228	310	05.01-	■	■
27.314 DFK, DFLK, DFLK-L, DF-KI	Diesel		11967	228	310	05.01-	■	■
32.314 VFK, VF-HK (D 2866 LF23)	Diesel		11967	228	310	05.01-	■	■
19.364 FAK, FA-KI, FAK-L (D 2866 LF35)	Diesel		11967	265	360	06.98-	■	■
19.364 FK, FK-L, F-KI, FL-KI, F-NL, FLK (D 2866 LF35)	Diesel		11967	265	360	06.98-	■	■
26.364 DFK, DFLK, DFLK-L (D 2866 LF24)	Diesel		11967	265	360	05.01-	■	■
27.364 DFAK, DFA-KI, DFAK-L	Diesel		11967	265	360	05.01-	■	■
27.364 DFK, DFK-KI, DFK-L, DF-KI	Diesel		11967	265	360	05.01-	■	■
32.364 VFK, VF-HK (D 2866 LF24)	Diesel		11967	265	360	05.01-	■	■
33.364 DFAK, DFAK-HK, DFA-KI	Diesel		11967	265	360	05.01-	■	■
35.364 VFK, VF-HK, VF-KI (D 2866 LF24)	Diesel		11967	265	360	03.02-	■	■
41.364 VFK, VF-HK, VF-KI	Diesel		11967	265	360	03.02-	■	■
35.373 VFK, VF-HK, VF-KI	Diesel		11967	272	370	03.02-	■	■
40.373 DFAK	Diesel		11967	272	370	05.01-	■	■
40.373 DFK	Diesel		11967	272	370	05.01-	■	■
41.373 VFK, VF-HK, VF-KI	Diesel		11967	272	370	03.02-	■	■
40.403 DFAK (D 2866 LF20)	Diesel		11967	294	400	01.94-	■	■
40.403 DFK (D 2866 LF20)	Diesel		11967	294	400	01.94-	■	■
19.414 FAK, FA-KI, FAK-L (D 2866 LF31)	Diesel		11967	301	409	06.98-	■	■
19.414 FK, F-KI, FK-L, FLK, FL-KI, F-NL (D 2866 LF31)	Diesel		11967	301	409	06.98-	■	■
26.414 DFK, DFLK, DFLK-L (D 2866 LF25)	Diesel		11967	301	409	05.01-	■	■

LISTA DE APLICACIONES - BUYERS GUIDE

27.414 DFAK, DFA-KI, DFAK-L	Diesel		11967	301	409	05.01-	■	■
27.414 DFK, DFK-KI, DFK-L, DF-KI	Diesel		11967	301	409	05.01-	■	■
32.414 VFK, VF-HK (D 2866 LF25)	Diesel		11967	301	409	05.01-	■	■
33.414 DFAK, DFAK-HK, DFA-KI	Diesel		11967	301	409	05.01-	■	■
35.414 VFK, VF-HK, VF-KI (D 2866 LF25)	Diesel		11967	301	409	03.02-	■	■
40.414 DFAK	Diesel		11967	301	409	05.01-	■	■
40.414 DFK	Diesel		11967	301	409	05.01-	■	■
41.414 VFK, VF-HK, VF-KI	Diesel		11967	301	409	03.02-	■	■
35.423 VFK, VF-HK, VF-KI	Diesel		11967	309	420	03.02-	■	■
40.423 DFAK	Diesel		11967	309	420	05.01-	■	■
40.423 DFK	Diesel		11967	309	420	05.01-	■	■
41.423 VFK, VF-HK, VF-KI	Diesel		11967	309	420	03.02-	■	■
19.464 FAK, FA-KI, FAK-L (D 2876 LF 06)	Diesel		12816	338	460	06.98-	■	■
19.464 FK, F-KI, FK-L, FLK, FL-KI, F-NL (D 2876 LF 06)	Diesel		12816	338	460	06.98-	■	■
26.464 DFK, DFLK, DFLK-L (D 2876 LF 03)	Diesel		12816	338	460	05.01-	■	■
27.464 DFAK, DFA-KI, DFAK-L	Diesel		12816	338	460	05.01-	■	■
27.464 DFK, DFK-KI, DFK-L, DF-KI	Diesel		12816	338	460	05.01-	■	■
32.464 VFK, VF-HK (D 2876 LF 03)	Diesel		12816	338	460	05.01-	■	■
33.464 DFAK, DFAK-HK, DFA-KI	Diesel		12816	338	460	05.01-	■	■
35.464 VFK, VF-HK, VF-KI (D 2876 LF 03)	Diesel		12816	338	460	03.02-	■	■
40.463 DFAK (D 2876 LF 02)	Diesel		12816	338	460	01.94-	■	■
40.463 DFK (D 2876 LF 02)	Diesel		12816	338	460	01.94-	■	■
41.464 VFK, VF-HK, VF-KI	Diesel		12816	338	460	03.02-	■	■
F2000 01.94-				Dump Truck				
19.233 FK, FK-L, CNG (E 2866 DF 01)	Gasolina		11967	170	231	03.00-	■	■
F2000 01.94-				Municipal Vehicle				
26.464 FVL-KO (D 2876 LF 03)	Diesel		12816	338	460	05.01-	■	■
F2000 01.94-				Platform/Chassis				
35.343VFC (D 2865 LF21)	Diesel		9973	250	340	08.95-	■	■
41.343VFC (D 2865 LF21)	Diesel		9973	250	340	08.95-	■	■
19.314 FAC	Diesel		11967	228	310	05.01-	■	■
23.314 FNLLC	Diesel		11967	228	310	05.01-	■	■
24.314 FNLLRC	Diesel		11967	228	310	05.01-	■	■
27.314 DFAC (D 2866 LF23)	Diesel		11967	228	310	05.01-	■	■
32.314 VF, VFC (D 2866 LF23)	Diesel		11967	228	310	05.01-	■	■
23.364 FNLLC	Diesel		11967	265	360	05.01-	■	■
24.364 FNLLRC	Diesel		11967	265	360	05.01-	■	■
27.364 DFAC (D 2866 LF24)	Diesel		11967	265	360	05.01-	■	■
32.364 VF, VFC (D 2866 LF24)	Diesel		11967	265	360	05.01-	■	■
33.364 DFAC	Diesel		11967	265	360	05.01-	■	■
35.364 VF, VFC, VFRC (D 2866 LF24)	Diesel		11967	265	360	05.01-	■	■
41.364 VF, VFC, VFRC	Diesel		11967	265	360	05.01-	■	■
35.373 VF, VFC, VFRC	Diesel		11967	272	370	05.01-	■	■
41.373 VF, VFC, VFRC	Diesel		11967	272	370	05.01-	■	■
23.414 FNLLC	Diesel		11967	301	409	05.01-	■	■
24.414 FNLLRC	Diesel		11967	301	409	05.01-	■	■
27.414 DFAC (D 2866 LF25)	Diesel		11967	301	409	05.01-	■	■
32.414 VF, VFC (D 2866 LF25)	Diesel		11967	301	409	05.01-	■	■
33.414 DFAC	Diesel		11967	301	409	05.01-	■	■
35.414 VF, VFC, VFRC (D 2866 LF25)	Diesel		11967	301	409	05.01-	■	■

LISTA DE APLICACIONES - BUYERS GUIDE

41.414 VF, VFC, VFRC	Diesel	11967	301	409	05.01-	■	■
35.423 VF, VFC, VFRC	Diesel	11967	309	420	05.01-	■	■
41.423 VF, VFC, VFRC	Diesel	11967	309	420	05.01-	■	■
19.464 FAC (D 2876 LF 06)	Diesel	12816	338	460	06.98-	■	■
23.464 FNLLC	Diesel	12816	338	460	05.01-	■	■
24.464 FNLLRC	Diesel	12816	338	460	05.01-	■	■
27.464 DFAC (D 2876 LF 03)	Diesel	12816	338	460	05.01-	■	■
32.464 VF, VFC (D 2876 LF 03)	Diesel	12816	338	460	05.01-	■	■
33.464 DFAC	Diesel	12816	338	460	05.01-	■	■
35.464 VF, VFC, VFRC (D 2876 LF 03)	Diesel	12816	338	460	05.01-	■	■
41.464 VF, VFC, VFRC (D 2876 LF 06)	Diesel	12816	338	460	06.98-	■	■
F2000 01.94-				Truck Tractor			
27.314 DFAS	Diesel	11967	228	310	05.01-	■	■
27.364 DFAS	Diesel	11967	265	360	05.01-	■	■
33.364 DFAS	Diesel	11967	265	360	05.01-	■	■
27.414 DFAS	Diesel	11967	301	409	05.01-	■	■
33.414 DFAS	Diesel	11967	301	409	05.01-	■	■
26.464 DFS, DFLS (D 2876 LF 03)	Diesel	12816	338	460	05.01-	■	■
27.464 DFAS	Diesel	12816	338	460	05.01-	■	■
33.464 DFAS	Diesel	12816	338	460	05.01-	■	■
40.463 DFAS (D 2876 LF 02)	Diesel	12816	338	460	01.94-	■	■
27.604 DFS	Diesel	18273	441	600	04.00-	■	■
33.604 DFAS	Diesel	18273	441	600	04.00-	■	■
33.604 DFS	Diesel	18273	441	600	04.00-	■	■
F90 06.86-12.97				Platform/Chassis			
15.192 FL (D 2146 HM 1 U)	Diesel	9660	141	192	01.89-12.97	■	■
24.272 FNL,24.272 FNLL,24.272 FVL	Diesel	9973	198	269	02.90-05.95	■	■
25.272 FNL,25.272 FNLL,25.272 FVL	Diesel	9973	198	269	09.90-10.93	■	■
24.322 FNL,24.322 FNLL,24.322 FVL	Diesel	9973	235	320	02.90-05.95	■	■
24.302 FNL,24.302 FNLL,24.302 FVL	Diesel	11967	221	299	05.90-10.90	■	■
24.372 FNL,24.372 FNLL,24.372 FVL	Diesel	11967	272	370	02.90-05.95	■	■
26.372 FNL,26.372 FNLL,26.372 FVL	Diesel	11967	272	370	09.90-12.95	■	■
26.402 FNL,26.402 FNLL,26.402 FVL	Diesel	11967	294	400	05.94-06.96	■	■
24.422 FNL,24.422 FNLL,24.422 FVL	Diesel	11967	309	420	02.90-05.95	■	■
26.422 FNL,26.422 FNLL,26.422 FVL	Diesel	11967	309	420	09.90-12.95	■	■
26.502 DFA (D 2840 LF01)	Diesel	18273	368	500	02.90-12.92	■	■
26.502 DFA (D 2840 LF04)	Diesel	18273	368	500	02.90-12.92	■	■
F90 06.86-12.97				Truck Tractor			
24.272 FNLS,24.272 FVLS	Diesel	9973	198	269	02.90-05.95	■	■
26.272 FNLS,26.272 FVLS	Diesel	9973	198	269	09.90-12.95	■	■
24.322 FNLS,24.322 FVLS	Diesel	9973	235	320	02.90-05.95	■	■
25.322 FNLS,25.322 FVLS	Diesel	9973	235	320	09.90-12.92	■	■
26.322 FNLS,26.322 FVLS	Diesel	9973	235	320	09.90-12.95	■	■
25.302 FNLS, 25.302 FVLS	Diesel	11967	221	299	09.90-12.91	■	■
26.302 FNLS,26.302 FVLS	Diesel	11967	221	299	09.90-12.91	■	■
24.372 FNLS,24.372 FVLS	Diesel	11967	272	370	02.90-05.95	■	■
25.372 FNLS,25.372 FVLS	Diesel	11967	272	370	09.90-10.93	■	■
26.372 FNLS,26.372 FVLS	Diesel	11967	272	370	01.92-06.96	■	■
26.402 FNLS,26.402 FVLS	Diesel	11967	294	400	05.94-06.96	■	■
25.422 FNLS,25.422 FVLS	Diesel	11967	309	420	09.90-12.92	■	■

LISTA DE APLICACIONES - BUYERS GUIDE

26.422 FNLS,26.422 FVLS		Diesel		11967	309	420	01.92-12.95	■	■
26.502 DFAS (D 2840 LF01)		Diesel		18273	368	500	02.90-12.92	■	■
26.502 DFAS (D 2840 LF04)		Diesel		18273	368	500	02.90-12.92	■	■
FOCL					Bus				
12.240 (D 0836 LOH 56)		Diesel		6871	176	240	08.07-	■	■
12.250 (D 0836 LOH 65)		Diesel		6871	184	250	08.04-	■	■
HOCL					Bus				
12.220 HOCL/R-NL (D 0826 LOH 15)		Diesel		6871	162	220	04.99-05.09	■	■
12.220 HOCL/R-NL (D 0826 LOH 17)		Diesel		6871	162	220	04.99-05.09	■	■
14.220 HOCL/R-NL (D 0826 LOH 15)		Diesel		6871	162	220	01.98-	■	■
14.220 HOCL/R-NL (D 0826 LOH 17)		Diesel		6871	162	220	01.98-	■	■
14.220 HOCL/R-NL (D 0826 LUH 11)		Diesel		6871	162	220	01.98-	■	■
18.220 HOCL/R-NL, HOCL/SKD(SL) (D 0826 LOH 03)		Diesel		6871	162	220	10.98-05.01	■	■
18.220 HOCL/R-NL, HOCL/SKD(SL) (D 0826 LOH 04)		Diesel		6871	162	220	10.98-05.01	■	■
18.220 HOCL/R-NL, HOCL/SKD(SL) (D 0826 LOH 05)		Diesel		6871	162	220	10.98-05.01	■	■
18.220 HOCL/R-NL, HOCL/SKD(SL) (D 0826 LOH 15)		Diesel		6871	162	220	10.98-05.01	■	■
18.220 HOCL/R-NL, HOCL/SKD(SL) (D 0826 LOH 17)		Diesel		6871	162	220	10.98-05.01	■	■
18.220 HOCL/R-NL, HOCL/SKD(SL) (D 0836 LOH 03)		Diesel		6871	162	220	10.98-05.01	■	■
12.240 HOCL-NL (D 0836 LOH 52)		Diesel		6871	176	240	05.00-	■	■
12.240 HOCL-NL (D 0836 LOH 56)		Diesel		6871	176	240	05.00-	■	■
14.240 HOCL-NL (D 0836 LOH 52)		Diesel		6871	176	240	05.00-	■	■
14.240 HOCL-NL (D 0836 LOH 56)		Diesel		6871	176	240	05.00-	■	■
18.240 HOCL-NL (D 0836 LOH 52)		Diesel		6871	176	240	08.02-10.09	■	■
18.240 HOCL-NL (D 0836 LOH 56)		Diesel		6871	176	240	08.02-10.09	■	■
14.250 HOCL-NL (D 0836 LOH 61)		Diesel		6871	184	250	05.07-	■	■
18.250 HOCL-NL, HOCL-SKD(SL) (D 0826 LOH 10)		Diesel		6871	184	250	05.07-12.14	■	■
18.250 HOCL-NL, HOCL-SKD(SL) (D 0836 LOH 61)		Diesel		6871	184	250	05.07-12.14	■	■
18.280 HOCL-NL (D 0836 LOH 01)		Diesel		6871	206	280	05.02-08.08	■	■
18.280 HOCL-NL (D 0836 LOH 02)		Diesel		6871	206	280	05.02-08.08	■	■
18.280 HOCL-NL (D 0836 LOH 51)		Diesel		6871	206	280	05.02-08.08	■	■
18.280 HOCL-NL (D 0836 LOH 55)		Diesel		6871	206	280	05.02-08.08	■	■
18.290 HOCL-NL (D 0836 LOH 60)		Diesel		6871	213	290	05.07-12.14	■	■
18.310 HOCL-NL (D 2066 LUH 07)		Diesel		10518	228	310	01.06-10.09	■	■
18.310 HOCL-NL (D 2066 LUH 12)		Diesel		10518	228	310	01.06-10.09	■	■
18.310 HOCL-NL (D 2066 LUH 22)		Diesel		10518	228	310	01.06-10.09	■	■
18.320 HOCL-NL (D 2066 LUH 42)		Diesel		10518	235	320	05.07-12.14	■	■
18.310 HOCL/R (D 2866 LOH 25)		Diesel		11967	228	310	01.92-	■	■
18.310 HOCL/R (D 2866 LOH 27)		Diesel		11967	228	310	01.92-	■	■
HOCL					Bus				
18.310 HOCL-NL (E 2876 LUH 02)		Gasolina		12816	228	310	05.07-	■	■
LION'S CITY 03.96-					Bus				
19.240 (D 0836 LOH 52)		Diesel		6871	176	240	05.04-10.09	■	■
19.280 (D 0836 LOH 40)		Diesel		6871	206	280	05.04-	■	■
19.280 (D 0836 LOH 51)		Diesel		6871	206	280	05.04-	■	■
19.290 (D 0836 LOH 64)		Diesel		6871	213	290	05.04-	■	■

LISTA DE APLICACIONES - BUYERS GUIDE

M 2000 L 04.95-					Concrete Mixer				
26.285 DL-TM, DLR-TM	Diesel		6871	206	280	05.01-	■	■	
M 2000 L 04.95-					Dump Truck				
18.255 LAK, LARK, LAK-L	Diesel		6871	180	245	05.01-	■	■	
18.255 LK, LK-L, LLK, LLK-L,LLRK, LRK	Diesel		6871	180	245	11.02-			
26.224, 26.225, DL-HK, DLR-HK	Diesel		6871	180	245	11.02-			
26.255 DL-HK, DLR-HK	Diesel		6871	180	245	11.02-			
18.285 LAK, LARK, LAK-L, (LE280B) (D 0836 LFL 03)	Diesel		6871	206	280	09.99-			
26.284, 26.285, DL-HK, DLR-HK	Diesel		6871	206	280	11.02-			
M 2000 L 04.95-					Platform/Chassis				
20.224, 20225 LNLC, LNLLC	Diesel		6871	162	224	05.01-	■	■	
18.285 LAC, LARC (LE280B) (D 0836 LFL 03)	Diesel		6871	206	280	09.99-			
M 2000 M 08.95-12.05					Dump Truck				
18.225 MK, MK-L, MLK, MLRK, MRK	Diesel		6871	162	220	10.00-12.05	■	■	
18.255 MAK, MAK-L, MARK	Diesel		6871	180	245	10.00-12.05			
18.255 MK, MK-L, MLK, MLRK, MRK	Diesel		6871	180	245	11.02-12.05			
18.285 MK, MK-L, MLK, MLRK, MRK	Diesel		6871	206	280	02.03-12.05			
M 2000 M 08.95-12.05					Truck Tractor				
18.225 MLS, MLRS	Diesel		6871	162	220	02.03-12.05	■	■	
NG 08.92-					Bus				
NG 313 (D 2066 LUH 12)	Diesel		10518	228	310	01.06-10.09	■	■	
NG 313 (D 2066 LUH 22)	Diesel		10518	228	310	01.06-10.09			
NG 323 (D 2066 LUH 42)	Diesel		10518	235	320	05.07-12.14			
NG 353 (D 2066 LUH 13)	Diesel		10518	257	350	05.07-12.14			
NG 353 (D 2066 LUH 23)	Diesel		10518	257	350	05.07-12.14			
NG 363 (D 2066 LUH 48)	Diesel		10518	264	360	05.07-12.14			
NG 08.92-					Bus				
NG 313 (E 2876 LUH 02)	Gasolina		12816	228	310	05.07-12.14	■	■	
NL 09.88-					Bus				
NL 202, NL 262, NL 263 (D 0826 LUH)	Diesel		6871	184	250	04.91-	■	■	
NL 273 (D 2066 LUH 11)	Diesel		10518	199	271	01.06-10.09			
NL 273 (D 2066 LUH 21)	Diesel		10518	199	271	01.06-10.09			
NL 283 (D 2066 LUH 41)	Diesel		10518	206	280	08.12-			
NL 313 (D 2066 LUH 12)	Diesel		10518	228	310	01.06-10.09			
NL 313 (D 2066 LUH 22)	Diesel		10518	228	310	01.06-10.09			
NL 323 (D 2066 LUH 42)	Diesel		10518	235	320	05.07-			
NL 313 (D 2866 LUH26)	Diesel		11967	228	310	07.98-			
NL 09.88-					Bus				
NL 243 (E 2866 DUH 03)	Gasolina		11967	180	245	05.07-12.14	■	■	
NL 243 (E 2866 DUH 04)	Gasolina		11967	180	245	05.07-12.14			
NL 313 (E 2876 LUH 02)	Gasolina		12816	228	310	05.07-12.14			
TGA 03.00-					Concrete Mixer				
33.430 (D 2066 LF 01)	Diesel		10518	316	430	09.07-	■	■	
TGA 03.00-					Dump Truck				
35.440	Diesel		10518	324	440	07.06-	■	■	
26.410 (D 2866 LF28)	Diesel		11967	301	410	02.02-			

LISTA DE APLICACIONES - BUYERS GUIDE

TGA 03.00-					Municipal Vehicle				
26.430, 26.440		Diesel		10518	316	430	06.05-	■	■
TGA 03.00-					Platform/Chassis				
28.310		Diesel		10518	228	310	07.06-	■	■
35.360		Diesel		10518	265	360	07.06-	■	■
28.390 (D 2066 LF 02)		Diesel		10518	287	390	07.06-	■	■
28.390 (D 2066 LF 12)		Diesel		10518	287	390	07.06-	■	■
28.400 (D 2066 LF 26)		Diesel		10518	294	400	07.06-	■	■
28.400 (D 2066 LF 37)		Diesel		10518	294	400	07.06-	■	■
35.400		Diesel		10518	294	400	11.06-	■	■
28.430		Diesel		10518	316	430	09.02-10.08	■	■
28.440		Diesel		10518	324	440	07.06-	■	■
35.440		Diesel		10518	324	440	11.06-	■	■
28.310		Diesel		11967	228	310	07.06-	■	■
28.360		Diesel		11967	265	360	07.06-	■	■
28.410		Diesel		11967	301	410	07.06-	■	■
35.480		Diesel		12419	353	480	11.06-	■	■
ÜL 09.89-					Bus				
ÜL 312,ÜL 322 (D 2865 LUH07)		Diesel		9973	228	310	04.92-09.96	■	■
ÜL 312,ÜL 322 (D 2865 LUH08)		Diesel		9973	228	310	04.92-09.96	■	■
RENAULT TRUCKS									
Agora 01.96-					Bus				
All models	01/96-	Diesel					01.96-	■	
Iliade 01.97-					Bus				
TE, RTC	01/97-	Diesel			222	302	01.97-	■	■
RT, RTX, GTC	01/97-	Diesel			250	340	01.97-	■	■
GTX	01/97-	Diesel			280	381	01.97-	■	■
Magnum 01.90-04.99					Platform/Chassis				
AE 385ti.18 (MIDR 06.35.40 N/3)	-12/95	Diesel		12024	283	385	02.92-10.96	■	
AE 385ti.19 (MIDR 06.35.40 N/3)	-12/95	Diesel		12024	283	385	02.92-10.96	■	
AE 385ti.26 (MIDR 06.35.40 N/3)	-12/95	Diesel		12024	283	385	02.92-10.96	■	
AE 420ti.18 (MIDR 06.35.40 J/3)	-12/95	Diesel		12024	305	415	10.92-12.96	■	
AE 420ti.18 (MIDR 06.35.40 P/41)	-12/95	Diesel		12024	305	415	10.92-12.96	■	
AE 420ti.24 (MIDR 06.35.40 J/3)	-12/95	Diesel		12024	305	415	10.92-12.96	■	
AE 420ti.24 (MIDR 06.35.40 P/41)	-12/95	Diesel		12024	305	415	10.92-12.96	■	
AE 420ti.26 (MIDR 06.35.40 J/3)	-12/95	Diesel		12024	305	415	10.92-12.96	■	
AE 420ti.26 (MIDR 06.35.40 P/41)	-12/95	Diesel		12024	305	415	10.92-12.96	■	
AE 520.18 (MACK-EE9-530)	-12/95	Diesel		16361	390	530	10.92-05.96	■	
AE 520.19 (MACK-EE9-530)	-12/95	Diesel		16361	390	530	10.92-05.96	■	
AE 520.24 (MACK-EE9-530)	-12/95	Diesel		16361	390	530	10.92-05.96	■	
AE 520.26 (MACK-EE9-530)	-12/95	Diesel		16361	390	530	10.92-	■	
Magnum 01.90-04.99					Truck Tractor				
AE 385ti.18T (MIDR 06.35.40 N/3)	-12/95	Diesel		12024	283	385	02.92-10.96	■	
AE 385ti.19T (MIDR 06.35.40 N/3)	-12/95	Diesel		12024	283	385	02.92-10.96	■	
AE 420ti.18T (MIDR 06.35.40 J/3)	-12/95	Diesel		12024	305	415	10.92-12.96	■	
AE 420ti.18T (MIDR 06.35.40 P/41)	-12/95	Diesel		12024	305	415	10.92-12.96	■	
AE 420ti.19T (MIDR 06.35.40 J/3)	-12/95	Diesel		12024	305	415	10.92-12.96	■	
AE 420ti.19T (MIDR 06.35.40 P/41)	-12/95	Diesel		12024	305	415	10.92-12.96	■	
AE 420ti.22T (MIDR 06.35.40 J/3)	-12/95	Diesel		12024	305	415	10.92-10.96	■	

LISTA DE APLICACIONES - BUYERS GUIDE

AE 420ti.22T (MIDR 06.35.40 P/41)	-12/95	Diesel		12024	305	415	10.92-10.96	■	
AE 420ti.24T (MIDR 06.35.40 J/3)	-12/95	Diesel		12024	305	415	10.92-12.96	■	
AE 420ti.24T (MIDR 06.35.40 P/41)	-12/95	Diesel		12024	305	415	10.92-12.96	■	
AE 420ti.26T (MIDR 06.35.40 J/3)	-12/95	Diesel		12024	305	415	10.92-12.96	■	
AE 420ti.26T (MIDR 06.35.40 P/41)	-12/95	Diesel		12024	305	415	10.92-12.96	■	
AE 520.18T (MACK-EE9-530)	-12/95	Diesel		16361	390	530	10.92-05.96	■	
AE 520.19T (MACK-EE9-530)	-12/95	Diesel		16361	390	530	10.92-05.96	■	
AE 520.22T (MACK-EE9-530)	-12/95	Diesel		16361	390	530	10.92-05.96	■	
AE 520.24T (MACK-EE9-530)	-12/95	Diesel		16361	390	530	10.92-05.96	■	
AE 520.26T (MACK-EE9-530)	-12/95	Diesel		16361	390	530	10.92-05.96	■	
Major 05.91-10.96					Dump Truck				
R 340ti.18 (MIDR 06.20.45 E)		Diesel		9839	249	339	05.91-10.96	■	■
R 340ti.18 (MIDR 06.20.45 E2)		Diesel		9839	249	339	05.91-10.96	■	■
R 340ti.18 (MIDR 06.20.45 E3)		Diesel		9839	249	339	05.91-10.96	■	■
R 385ti.18,R 380.18 (MIDR 06.35.40 H)		Diesel		12024	275	374	05.91-10.96	■	
R 385ti.18,R 380.18 (MIDR 06.35.40 L1)		Diesel		12024	275	374	05.91-10.96	■	
R 385ti.18,R 380.18 (MIDR 06.35.40 N/3)		Diesel		12024	275	374	05.91-10.96	■	
R 385ti.26 (MIDR 06.35.40 L1)		Diesel		12024	283	385	12.91-10.96	■	■
R 385ti.26 (MIDR 06.35.40 N/3)		Diesel		12024	283	385	12.91-10.96	■	■
Major 05.91-10.96					Platform/Chassis				
R 340ti.17 (MIDR 06.20.45 E)		Diesel		9839	249	339	05.91-10.96	■	■
R 340ti.17 (MIDR 06.20.45 E2)		Diesel		9839	249	339	05.91-10.96	■	■
R 340ti.17 (MIDR 06.20.45 E3)		Diesel		9839	249	339	05.91-10.96	■	■
R 340ti.18 (MIDR 06.20.45 E)		Diesel		9839	249	339	05.91-10.96	■	■
R 340ti.18 (MIDR 06.20.45 E2)		Diesel		9839	249	339	05.91-10.96	■	■
R 340ti.18 (MIDR 06.20.45 E3)		Diesel		9839	249	339	05.91-10.96	■	■
R 340ti.18 (MIDR 06.20.45 E)		Diesel		9839	249	339	05.91-10.96	■	■
R 340ti.18 (MIDR 06.20.45 E2)		Diesel		9839	249	339	05.91-10.96	■	■
R 340ti.18 (MIDR 06.20.45 E3)		Diesel		9839	249	339	05.91-10.96	■	■
R 340ti.19 (MIDR 06.20.45 E)		Diesel		9839	249	339	05.91-10.96	■	■
R 340ti.19 (MIDR 06.20.45 E2)		Diesel		9839	249	339	05.91-10.96	■	■
R 340ti.19 (MIDR 06.20.45 E3)		Diesel		9839	249	339	05.91-10.96	■	■
R 340ti.24 (MIDR 06.20.45 E)		Diesel		9839	249	339	05.91-10.96	■	■
R 340ti.24 (MIDR 06.20.45 E2)		Diesel		9839	249	339	05.91-10.96	■	■
R 340ti.24 (MIDR 06.20.45 E3)		Diesel		9839	249	339	05.91-10.96	■	■
R 340ti.26 (MIDR 06.20.45 E)		Diesel		9839	249	339	05.91-10.96	■	■
R 340ti.26 (MIDR 06.20.45 E2)		Diesel		9839	249	339	05.91-10.96	■	■
R 340ti.26 (MIDR 06.20.45 E3)		Diesel		9839	249	339	05.91-10.96	■	■
R 385ti.17,R 380.17 (MIDR 06.35.40 H)		Diesel		12024	275	374	05.91-10.96	■	
R 385ti.17,R 380.17 (MIDR 06.35.40 L1)		Diesel		12024	275	374	05.91-10.96	■	
R 385ti.17,R 380.17 (MIDR 06.35.40 N/3)		Diesel		12024	275	374	05.91-10.96	■	
R 385ti.18,R 380.18 (MIDR 06.35.40 H)		Diesel		12024	275	374	05.91-10.96	■	
R 385ti.18,R 380.18 (MIDR 06.35.40 L1)		Diesel		12024	275	374	05.91-10.96	■	
R 385ti.18,R 380.18 (MIDR 06.35.40 N/3)		Diesel		12024	275	374	05.91-10.96	■	
R 385ti.18,R 380.18 (MIDR 06.35.40 H)		Diesel		12024	275	374	05.91-10.96	■	
R 385ti.18,R 380.18 (MIDR 06.35.40 L1)		Diesel		12024	275	374	05.91-10.96	■	
R 385ti.18,R 380.18 (MIDR 06.35.40 N/3)		Diesel		12024	275	374	05.91-10.96	■	
R 385ti.19,R 380.19 (MIDR 06.35.40 H)		Diesel		12024	275	374	05.91-10.96	■	■
R 385ti.19,R 380.19 (MIDR 06.35.40 L1)		Diesel		12024	275	374	05.91-10.96	■	■
R 385ti.19,R 380.19 (MIDR 06.35.40 N/3)		Diesel		12024	275	374	05.91-10.96	■	■
R 385ti.24,R 380.24 (MIDR 06.35.40 H)		Diesel		12024	275	374	05.91-10.96	■	■

LISTA DE APLICACIONES - BUYERS GUIDE

R 385ti.24,R 380.24 (MIDR 06.35.40 L1)	Diesel		12024	275	374	05.91-10.96	■	■
R 385ti.24,R 380.24 (MIDR 06.35.40 N/3)	Diesel		12024	275	374	05.91-10.96	■	■
R 385ti.25,R 380.25 (MIDR 06.35.40 H)	Diesel		12024	275	374	05.91-10.96	■	■
R 385ti.25,R 380.25 (MIDR 06.35.40 L1)	Diesel		12024	275	374	05.91-10.96	■	■
R 385ti.25,R 380.25 (MIDR 06.35.40 N/3)	Diesel		12024	275	374	05.91-10.96	■	■
R 385ti.26,R 380.26 (MIDR 06.35.40 H)	Diesel		12024	275	374	05.91-10.96	■	
R 385ti.26,R 380.26 (MIDR 06.35.40 L1)	Diesel		12024	275	374	05.91-10.96	■	
R 385ti.26,R 380.26 (MIDR 06.35.40 N/3)	Diesel		12024	275	374	05.91-10.96	■	
R 385ti.26 (MIDR 06.35.40 L1)	Diesel		12024	283	385	12.91-10.96	■	■
R 385ti.26 (MIDR 06.35.40 N/3)	Diesel		12024	283	385	12.91-10.96	■	■
Major 05.91-10.96				Truck Tractor				
R 340ti.16/T (MIDR 06.20.45 E)	Diesel		9839	249	339	05.91-10.96	■	■
R 340ti.16/T (MIDR 06.20.45 E2)	Diesel		9839	249	339	05.91-10.96	■	■
R 340ti.16/T (MIDR 06.20.45 E3)	Diesel		9839	249	339	05.91-10.96	■	■
R 340ti.18/T (MIDR 06.20.45 E)	Diesel		9839	249	339	05.91-10.96	■	■
R 340ti.18/T (MIDR 06.20.45 E2)	Diesel		9839	249	339	05.91-10.96	■	■
R 340ti.18/T (MIDR 06.20.45 E3)	Diesel		9839	249	339	05.91-10.96	■	■
R 340ti.19/T (MIDR 06.20.45 E)	Diesel		9839	249	339	05.91-10.96	■	■
R 340ti.19/T (MIDR 06.20.45 E2)	Diesel		9839	249	339	05.91-10.96	■	■
R 340ti.19/T (MIDR 06.20.45 E3)	Diesel		9839	249	339	05.91-10.96	■	■
R 385ti.18/T,R 380.18/T (MIDR 06.35.40 H)	Diesel		12024	275	374	05.91-10.96	■	
R 385ti.18/T,R 380.18/T (MIDR 06.35.40 L1)	Diesel		12024	275	374	05.91-10.96	■	
R 385ti.18/T,R 380.18/T (MIDR 06.35.40 N/3)	Diesel		12024	275	374	05.91-10.96	■	
R 385ti.19/T,R 380.19/T (MIDR 06.35.40 H)	Diesel		12024	275	374	05.91-10.96	■	
R 385ti.19/T,R 380.19/T (MIDR 06.35.40 L1)	Diesel		12024	275	374	05.91-10.96	■	
R 385ti.19/T,R 380.19/T (MIDR 06.35.40 N/3)	Diesel		12024	275	374	05.91-10.96	■	
R 385ti.22/T,R 380.19/TB (MIDR 06.35.40 H)	Diesel		12024	275	374	05.91-10.96	■	■
R 385ti.22/T,R 380.19/TB (MIDR 06.35.40 L1)	Diesel		12024	275	374	05.91-10.96	■	■
R 385ti.22/T,R 380.19/TB (MIDR 06.35.40 N/3)	Diesel		12024	275	374	05.91-10.96	■	■
R 385ti.25/T,R 380.25/T (MIDR 06.35.40 H)	Diesel		12024	275	374	05.91-10.96	■	■
R 385ti.25/T,R 380.25/T (MIDR 06.35.40 L1)	Diesel		12024	275	374	05.91-10.96	■	■
R 385ti.25/T,R 380.25/T (MIDR 06.35.40 N/3)	Diesel		12024	275	374	05.91-10.96	■	■
R 385ti.26/T,R 380.26/T (MIDR 06.35.40 H)	Diesel		12024	275	374	05.91-10.96	■	■
R 385ti.26/T,R 380.26/T (MIDR 06.35.40 L1)	Diesel		12024	275	374	05.91-10.96	■	■
R 385ti.26/T,R 380.26/T (MIDR 06.35.40 N/3)	Diesel		12024	275	374	05.91-10.96	■	■
R 420ti.18/T (MIDR 06.35.40 J/3)	Diesel		12024	305	415	10.92-10.96	■	■
R 420ti.19/T (MIDR 06.35.40 J/3)	Diesel		12024	305	415	10.92-10.96	■	■
R 420ti.19/T (MIDR 06.35.40 J/3)	Diesel		12024	305	415	10.92-10.96	■	■
R 420ti.22/T (MIDR 06.35.40 J/3)	Diesel		12024	305	415	10.92-10.96	■	■
R 420ti.24/TS (MIDR 06.35.40 J/3)	Diesel		12024	305	415	04.92-10.96	■	■
R 420ti.24/TS (MIDR 06.35.40 J1)	Diesel		12024	305	415	04.92-10.96	■	■
R 420ti.26/TS (MIDR 06.35.40 J/3)	Diesel		12024	305	415	04.92-10.96	■	■
R 420ti.26/TS (MIDR 06.35.40 J1)	Diesel		12024	305	415	04.92-10.96	■	■
R 420ti.35/TS (MIDR 06.35.40 J/3)	Diesel		12024	305	415	04.92-10.96	■	■