

LISTA DE APLICACIONES - BUYERS GUIDE

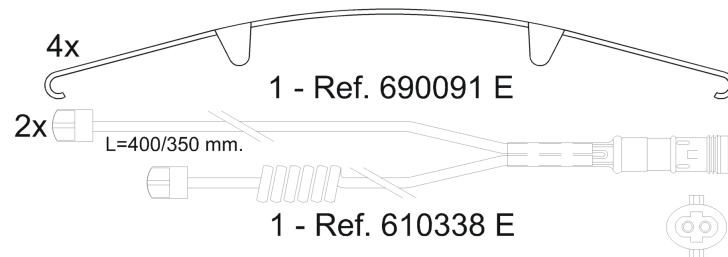
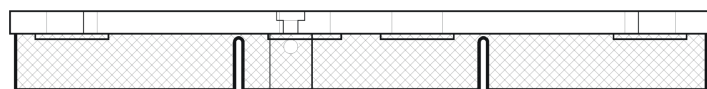
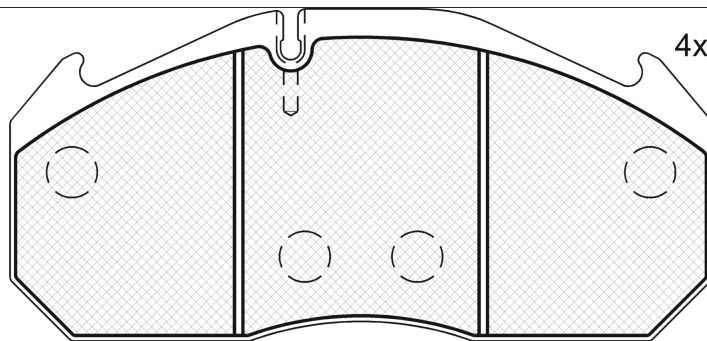
151040-127



8 424073 088390

Qty: 660

Weight: 10.960



151040-127



90R-01178/660



Lucas-Meritor D3 -D Elsa

249.6x118.2x28

WVA

29113

MAKE

MAN

RENAULT TRUCKS

SETRA



Trac.	CC	Kw	CV
-------	----	----	----



Front / Rear

MAN

E2000 08.97-

Dump Truck

Model	Engine	CC	Kw	CV	05.00-	05.00-	05.00-	05.00-	05.00-
19.310 FLK (D 2866 LF23)	Diesel	11967	228	310	05.00-	■	■		
26.310 FAVLK (D 2866 LF23)	Diesel	11967	228	310	05.00-	■	■		
19.360 FLK (D 2866 LF24)	Diesel	11967	265	360	05.00-	■	■		
26.360 FAVLK (D 2866 LF24)	Diesel	11967	265	360	05.00-	■	■		
28.360 FANLK (D 2866 LF24)	Diesel	11967	265	360	05.00-	■	■		
33.360 DFAK, DFALK (D 2866 LF24)	Diesel	11967	265	360	05.00-	■	■		
19.410 FLK (D 2866 LF25)	Diesel	11967	301	410	05.00-	■	■		
26.410 FAVLK (D 2866 LF25)	Diesel	11967	301	410	05.00-	■	■		
28.410 FANLK (D 2866 LF25)	Diesel	11967	301	410	05.00-	■	■		
30.410 FANLK (D 2866 LF25)	Diesel	11967	301	410	05.00-	■	■		
32.410 VFARK (D 2866 LF25)	Diesel	11967	301	410	05.00-	■	■		
33.410 DFAK, DFALK (D 2866 LF25)	Diesel	11967	301	410	05.00-	■	■		
50.410 VFAVK, VFAVK-HK, VFAV-G (D 2866 LF25)	Diesel	11967	301	410	03.01-	■	■		
19.460 FLK (D 2876 LF 03)	Diesel	12816	338	460	05.00-	■	■		
26.460 FAVLK (D 2876 LF 03)	Diesel	12816	338	460	05.00-	■	■		
28.460 FANLK (D 2876 LF 03)	Diesel	12816	338	460	05.00-	■	■		
30.460 FANLK (D 2876 LF 03)	Diesel	12816	338	460	05.00-	■	■		
33.460 DFAK, DFALK (D 2876 LF 03)	Diesel	12816	338	460	05.00-	■	■		
50.460 VFAVK, VFAV-G, VFAVK-HK (D 2876 LF 03)	Diesel	12816	338	460	03.01-	■	■		

E2000 08.97-

Platform/Chassis

Model	Engine	CC	Kw	CV	05.00-	05.00-	05.00-	05.00-	05.00-
28.310 FNLC (D 2866 LF23)	Diesel	11967	228	310	05.00-	■	■		
28.310 FNLC	Diesel	11967	228	310	05.00-	■	■		

LISTA DE APLICACIONES - BUYERS GUIDE

28.310 FNLC		Diesel		11967	228	310	05.00-	■	■
30.310 FNLC (D 2866 LF23)		Diesel		11967	228	310	05.00-	■	■
32.310 VFLC (D 2866 LF23)		Diesel		11967	228	310	05.00-	■	■
32.310 VFNLC (D 2866 LF23)		Diesel		11967	228	310	05.00-	■	■
32.310 VFNLC (D 2866 LF23)		Diesel		11967	228	310	05.00-	■	■
28.360 FANLC (D 2866 LF24)		Diesel		11967	265	360	05.00-	■	■
28.360 FNALC (D 2866 LF24)		Diesel		11967	265	360	05.00-	■	■
28.360 FNLC (D 2866 LF24)		Diesel		11967	265	360	05.00-	■	■
28.360 FNLC		Diesel		11967	265	360	05.00-	■	■
28.360 FNLC		Diesel		11967	265	360	05.00-	■	■
30.360 FNLC (D 2866 LF24)		Diesel		11967	265	360	05.00-	■	■
32.360 VFLC (D 2866 LF24)		Diesel		11967	265	360	05.00-	■	■
32.360 VFNLC (D 2866 LF24)		Diesel		11967	265	360	05.00-	■	■
32.360 VFNLC (D 2866 LF24)		Diesel		11967	265	360	05.00-	■	■
33.360 DFALC (D 2866 LF24)		Diesel		11967	265	360	05.00-	■	■
28.410 FANLC (D 2866 LF25)		Diesel		11967	301	410	05.00-	■	■
28.410 FNLC (D 2866 LF25)		Diesel		11967	301	410	05.00-	■	■
28.410 FNLC		Diesel		11967	301	410	05.00-	■	■
28.410 FNLC		Diesel		11967	301	410	05.00-	■	■
30.410 FANLC (D 2866 LF25)		Diesel		11967	301	410	05.00-	■	■
30.410 FNLC (D 2866 LF25)		Diesel		11967	301	410	05.00-	■	■
32.410 VFLC,VFRC, VFLRC (D 2866 LF25)		Diesel		11967	301	410	05.00-	■	■
32.410 VFNLC (D 2866 LF25)		Diesel		11967	301	410	05.00-	■	■
32.410 VFNLC (D 2866 LF25)		Diesel		11967	301	410	05.00-	■	■
33.410 DFALC (D 2866 LF25)		Diesel		11967	301	410	05.00-	■	■
35.410 FVNLC (D 2866 LF25)		Diesel		11967	301	410	05.00-	■	■
35.410 FVNLC (D 2866 LF25)		Diesel		11967	301	410	05.00-	■	■
28.460 FANLC (D 2876 LF 03)		Diesel		12816	338	460	05.00-	■	■
28.460 FNLC (D 2876 LF 03)		Diesel		12816	338	460	05.00-	■	■
28.460 FNLC		Diesel		12816	338	460	05.00-	■	■
28.460 FNLC		Diesel		12816	338	460	05.00-	■	■
30.460 FANLC (D 2876 LF 03)		Diesel		12816	338	460	05.00-	■	■
30.460 FNLC (D 2876 LF 03)		Diesel		12816	338	460	05.00-	■	■
32.460 VFARK		Diesel		12816	338	460	05.00-	■	■
32.460 VFLC, VFLRC (D 2876 LF 03)		Diesel		12816	338	460	05.00-	■	■
32.460 VFNLC (D 2876 LF 03)		Diesel		12816	338	460	05.00-	■	■
32.460 VFNLC (D 2876 LF 03)		Diesel		12816	338	460	05.00-	■	■
33.460 DFALC (D 2876 LF 03)		Diesel		12816	338	460	05.00-	■	■
35.460 FVNLC (D 2876 LF 03)		Diesel		12816	338	460	05.00-	■	■
35.460 FVNLC (D 2876 LF 03)		Diesel		12816	338	460	05.00-	■	■
E2000 08.97-					Platform/Chassis				
28.230 FNLC (E 2866 DF 01)		Gasolina		11967	170	231	05.00-	■	■
28.230 FNLC		Gasolina		11967	170	231	05.00-	■	■
E2000 08.97-					Truck Tractor				
19.310 FLS (D 2866 LF23)		Diesel		11967	228	310	05.00-	■	■
19.360 FLS (D 2866 LF24)		Diesel		11967	265	360	05.00-	■	■
33.360 DFALS (D 2866 LF24)		Diesel		11967	265	360	04.01-	■	■
19.410 FLS (D 2866 LF25)		Diesel		11967	301	410	05.00-	■	■
33.410 DFALS (D 2866 LF25)		Diesel		11967	301	410	04.01-	■	■
19.460 FLS (D 2876 LF 03)		Diesel		12816	338	460	05.00-	■	■
29.460 FVAS (D 2876 LF 03)		Diesel		12816	338	460	05.00-	■	■

LISTA DE APLICACIONES - BUYERS GUIDE

33.460 DFALS (D 2876 LF 03)	Diesel	12816	338	460	04.01-	■	■
41.460 DFVS, DFVLS (D 2876 LF 03)	Diesel	12816	338	460	06.00-	■	■
41.600 DFVS, DFVLS (D 2840 LF21)	Diesel	18273	441	600	06.00-	■	■
F2000 01.94-				Concrete Mixer			
26.314 DF-TM (D 2866 LF23)	Diesel	11967	228	310	05.01-	■	■
27.314 DF-TM	Diesel	11967	228	310	05.01-	■	■
32.314 VF-TM (D 2866 LF23)	Diesel	11967	228	310	05.01-	■	■
35.314 VF-TM	Diesel	11967	228	310	03.02-	■	■
26.364 DF-TM (D 2866 LF24)	Diesel	11967	265	360	05.01-	■	■
27.364 DF-TM	Diesel	11967	265	360	05.01-	■	■
32.364 VF-TM (D 2866 LF24)	Diesel	11967	265	360	05.01-	■	■
35.364 VF-TM (D 2866 LF24)	Diesel	11967	265	360	03.02-	■	■
27.373 DF-TM	Diesel	11967	272	370	07.00-	■	■
27.403 DF-TM	Diesel	11967	294	400	07.00-	■	■
26.414 DF-TM (D 2866 LF25)	Diesel	11967	301	409	05.01-	■	■
27.414 DF-TM	Diesel	11967	301	409	05.01-	■	■
32.414 VF-TM (D 2866 LF25)	Diesel	11967	301	409	05.01-	■	■
35.414 VF-TM (D 2866 LF25)	Diesel	11967	301	409	03.02-	■	■
27.423 DF-TM	Diesel	11967	309	420	07.00-	■	■
26.464 DF-TM (D 2876 LF 03)	Diesel	12816	338	460	05.01-	■	■
27.463 DF-TM	Diesel	12816	338	460	07.00-	■	■
27.464 DF-TM	Diesel	12816	338	460	05.01-	■	■
32.464 VF-TM (D 2876 LF 03)	Diesel	12816	338	460	05.01-	■	■
35.464 VF-TM (D 2876 LF 03)	Diesel	12816	338	460	03.02-	■	■
F2000 01.94-				Dump Truck			
19.273FAK (D 2865 LF22)	Diesel	9973	198	269	01.94-	■	
19.273FK (D 2865 LF22)	Diesel	9973	198	269	01.94-	■	
26.273 DFK,26.273 DFLK (D 2865 LF22)	Diesel	9973	198	269	01.94-12.95	■	
27.273DFAK (D 2865 LF22)	Diesel	9973	198	269	01.94-12.95	■	
27.273DFK (D 2865 LF22)	Diesel	9973	198	269	01.94-12.95	■	
19.293 FAK (D 2865 LF20)	Diesel	9973	213	290	01.94-	■	
19.293 FAK (D 2865 LF24)	Diesel	9973	213	290	01.94-	■	
19.293 FK,19.293 FLK (D 2865 LF20)	Diesel	9973	213	290	01.94-	■	
19.293 FK,19.293 FLK (D 2865 LF24)	Diesel	9973	213	290	01.94-	■	
26.293 DFK,26.293 DFLK (D 2865 LF20)	Diesel	9973	213	290	01.94-	■	
26.293 DFK,26.293 DFLK (D 2865 LF24)	Diesel	9973	213	290	01.94-	■	
27.293DFAK (D 2865 LF20)	Diesel	9973	213	290	01.94-	■	
27.293DFAK (D 2865 LF24)	Diesel	9973	213	290	01.94-	■	
27.293 DFK (D 2865 LF20)	Diesel	9973	213	290	01.94-	■	
27.293 DFK (D 2865 LF24)	Diesel	9973	213	290	01.94-	■	
19.323FAK (D 2865 LF23)	Diesel	9973	235	320	01.94-12.95	■	
19.323 FK,19.323 FLK (D 2865 LF23)	Diesel	9973	235	320	01.94-12.95	■	
26.323 DFK,26.323 DFLK (D 2865 LF23)	Diesel	9973	235	320	01.94-12.95	■	
27.323 DFAK, DFA-KI (D 2865 LF23)	Diesel	9973	235	320	01.94-	■	
27.323 DFK, DF-KI (D 2865 LF23)	Diesel	9973	235	320	01.94-	■	
33.323 DFAK (D 2865 LF23)	Diesel	9973	235	320	01.94-12.95	■	
19.343FAK (D 2865 LF21)	Diesel	9973	250	340	01.94-	■	
19.343 FK,19.343 FLK (D 2865 LF21)	Diesel	9973	250	340	01.94-	■	
26.343 DFK,26.343 DFLK (D 2865 LF21)	Diesel	9973	250	340	01.94-	■	
27.343DFAK (D 2865 LF21)	Diesel	9973	250	340	01.94-	■	
27.343DFK (D 2865 LF21)	Diesel	9973	250	340	01.94-	■	

LISTA DE APLICACIONES - BUYERS GUIDE

32.343VFK (D 2865 LF21)	Diesel	9973	250	340	08.95-	■	
33.343 DFAK (D 2865 LF21)	Diesel	9973	250	340	01.94-	■	
35.343VFK (D 2865 LF21)	Diesel	9973	250	340	08.95-	■	
41.343VFK (D 2865 LF21)	Diesel	9973	250	340	08.95-	■	
19.314 FAK, FA-KI, FAK-L	Diesel	11967	228	310	05.01-	■	■
19.314 FK, FK-L, F-KI, FL-KI, F-NL, FLK (D 2866 LF34)	Diesel	11967	228	310	06.94-02.05	■	■
26.314 DFK, DFLK, DFLK-L (D 2866 LF23)	Diesel	11967	228	310	05.01-	■	■
27.314 DFAK, DFA-KI, DFAK-L	Diesel	11967	228	310	05.01-	■	■
27.314 DFK, DFLK, DFLK-L, DF-KI	Diesel	11967	228	310	05.01-	■	■
32.314 VFK, VF-HK (D 2866 LF23)	Diesel	11967	228	310	05.01-	■	■
19.364 FAK, FA-KI, FAK-L (D 2866 LF35)	Diesel	11967	265	360	06.98-	■	■
19.364 FK, FK-L, F-KI, FL-KI, F-NL, FLK (D 2866 LF35)	Diesel	11967	265	360	06.98-	■	■
26.364 DFK, DFLK, DFLK-L (D 2866 LF24)	Diesel	11967	265	360	05.01-	■	■
27.364 DFAK, DFA-KI, DFAK-L	Diesel	11967	265	360	05.01-	■	■
27.364 DFK, DFK-KI, DFK-L, DF-KI	Diesel	11967	265	360	05.01-	■	■
32.364 VFK, VF-HK (D 2866 LF24)	Diesel	11967	265	360	05.01-	■	■
33.364 DFAK, DFAK-HK, DFA-KI	Diesel	11967	265	360	05.01-	■	■
35.364 VFK, VF-HK, VF-KI (D 2866 LF24)	Diesel	11967	265	360	03.02-	■	■
41.364 VFK, VF-HK, VF-KI	Diesel	11967	265	360	03.02-	■	■
19.373 FAK, FA-KI, FAK-L (D 2866 LF21)	Diesel	11967	272	370	01.94-	■	
19.373 FK, FK-L, F-KI, FL-KI, F-NL, FLK (D 2866 LF21)	Diesel	11967	272	370	01.94-	■	
26.373 DFK,26.373 DFLK (D 2866 LF21)	Diesel	11967	272	370	01.94-12.95	■	
27.373 DFAK, DFA-KI, DFAK-L (D 2866 LF21)	Diesel	11967	272	370	01.94-	■	
27.373 DFK, DFK-KI, DFK-L, DF-KI (D 2866 LF21)	Diesel	11967	272	370	01.94-	■	
33.373 DFAK, DFAK-HK, DFA-KI (D 2866 LF21)	Diesel	11967	272	370	01.94-	■	
35.373 VFK, VF-HK, VF-KI	Diesel	11967	272	370	03.02-	■	■
40.373 DFAK	Diesel	11967	272	370	05.01-	■	■
40.373 DFK	Diesel	11967	272	370	05.01-	■	■
41.373 VFK, VF-HK, VF-KI	Diesel	11967	272	370	03.02-	■	■
19.403 FAK, FA-KI (D 2866 LF20)	Diesel	11967	294	400	01.94-	■	
19.403 FK, F-KI, FK-L,FLK, FL-KI, F-NL (D 2866 LF20)	Diesel	11967	294	400	01.94-	■	
26.403 DFK,26.403 DFLK (D 2866 LF20)	Diesel	11967	294	400	01.94-	■	
27.403 DFAK, DFA-KI, DFAK-L (D 2866 LF20)	Diesel	11967	294	400	01.94-	■	
27.403 DFK, DFK-KI, DFK-L, DF-KI (D 2866 LF20)	Diesel	11967	294	400	01.94-	■	
33.403 DFAK, DFAK-HK, DFA-KI (D 2866 LF20)	Diesel	11967	294	400	01.94-	■	
35.403 VFK, VF-HK, VF-KI (D 2866 LF20)	Diesel	11967	294	400	03.02-	■	
40.403 DFAK (D 2866 LF20)	Diesel	11967	294	400	01.94-	■	■
40.403 DFK (D 2866 LF20)	Diesel	11967	294	400	01.94-	■	■
41.403 VFK, VF-HK, VF-KI (D 2866 LF20)	Diesel	11967	294	400	08.95-	■	
19.414 FAK, FA-KI, FAK-L (D 2866 LF31)	Diesel	11967	301	409	06.98-	■	■
19.414 FK, F-KI, FK-L,FLK, FL-KI, F-NL (D 2866 LF31)	Diesel	11967	301	409	06.98-	■	■
26.414 DFK, DFLK, DFLK-L (D 2866 LF25)	Diesel	11967	301	409	05.01-	■	■
27.414 DFAK, DFA-KI, DFAK-L	Diesel	11967	301	409	05.01-	■	■
27.414 DFK, DFK-KI, DFK-L, DF-KI	Diesel	11967	301	409	05.01-	■	■
32.414 VFK, VF-HK (D 2866 LF25)	Diesel	11967	301	409	05.01-	■	■
33.414 DFAK, DFAK-HK, DFA-KI	Diesel	11967	301	409	05.01-	■	■
35.414 VFK, VF-HK, VF-KI (D 2866 LF25)	Diesel	11967	301	409	03.02-	■	■

LISTA DE APLICACIONES - BUYERS GUIDE

40.414 DFAK		Diesel		11967	301	409	05.01-	■	■
40.414 DFK		Diesel		11967	301	409	05.01-	■	■
41.414 VFK, VF-HK, VF-KI		Diesel		11967	301	409	03.02-	■	■
19.423 FAK, FA-KI (D 2866 LF22)		Diesel		11967	309	420	01.94-	■	
19.423 FK, F-KI, FK-L, FLK, FL-KI, F-NL (D 2866 LF22)		Diesel		11967	309	420	01.94-	■	
26.423 DFK, 26.423 DFLK (D 2866 LF22)		Diesel		11967	309	420	01.94-12.95	■	
27.423 DFAK, DFA-KI, DFAK-L (D 2866 LF22)		Diesel		11967	309	420	01.94-	■	
27.423 DFK, DFK-KI, DFK-L, DF-KI (D 2866 LF22)		Diesel		11967	309	420	01.94-	■	
33.423 DFAK, DFAK-HK, DFA-KI (D 2866 LF22)		Diesel		11967	309	420	01.94-	■	
35.423 VFK, VF-HK, VF-KI		Diesel		11967	309	420	03.02-	■	■
40.423 DFAK		Diesel		11967	309	420	05.01-	■	■
40.423 DFK		Diesel		11967	309	420	05.01-	■	■
41.423 VFK, VF-HK, VF-KI		Diesel		11967	309	420	03.02-	■	■
19.463 FAK, FA-KI, FAK-L (D 2876 LF 02)		Diesel		12816	338	460	01.94-	■	
19.463 FK, F-KI, FK-L, FLK, FL-KI, F-NL (D 2876 LF 02)		Diesel		12816	338	460	01.94-	■	
19.464 FAK, FA-KI, FAK-L (D 2876 LF 06)		Diesel		12816	338	460	06.98-	■	■
19.464 FK, F-KI, FK-L, FLK, FL-KI, F-NL (D 2876 LF 06)		Diesel		12816	338	460	06.98-	■	■
26.463 DFK, DFLK, DFLK-L (D 2876 LF 02)		Diesel		12816	338	460	01.94-	■	
26.464 DFK, DFLK, DFLK-L (D 2876 LF 03)		Diesel		12816	338	460	05.01-	■	■
27.463 DFAK, DFA-KI, DFAK-L (D 2876 LF 02)		Diesel		12816	338	460	01.94-	■	
27.463 DFK, DFK-KI, DFK-L, DF-KI (D 2876 LF 02)		Diesel		12816	338	460	01.94-	■	
27.464 DFAK, DFA-KI, DFAK-L		Diesel		12816	338	460	05.01-	■	■
27.464 DFK, DFK-KI, DFK-L, DF-KI		Diesel		12816	338	460	05.01-	■	■
32.463VFK (D 2876 LF 02)		Diesel		12816	338	460	08.95-	■	
32.464 VFK, VF-HK (D 2876 LF 03)		Diesel		12816	338	460	05.01-	■	■
33.463 DFAK, DFAK-HK, DFA-KI (D 2876 LF 02)		Diesel		12816	338	460	01.94-	■	
33.464 DFAK, DFAK-HK, DFA-KI		Diesel		12816	338	460	05.01-	■	■
35.463 VFK, VF-HK, VF-KI (D 2876 LF 02)		Diesel		12816	338	460	08.95-	■	
35.464 VFK, VF-HK, VF-KI (D 2876 LF 03)		Diesel		12816	338	460	03.02-	■	■
40.463 DFAK (D 2876 LF 02)		Diesel		12816	338	460	01.94-	■	■
40.463 DFK (D 2876 LF 02)		Diesel		12816	338	460	01.94-	■	■
41.463 VFK, VF-HK, VF-KI (D 2876 LF 02)		Diesel		12816	338	460	08.95-	■	
41.464 VFK, VF-HK, VF-KI		Diesel		12816	338	460	03.02-	■	■
F2000 01.94-					Dump Truck				
19.233 FK, FK-L, CNG (E 2866 DF 01)		Gasolina		11967	170	231	03.00-	■	■
F2000 01.94-					Municipal Vehicle				
26.464 FVL-KO (D 2876 LF 03)		Diesel		12816	338	460	05.01-	■	
F2000 01.94-					Platform/Chassis				
19.273FA (D 2865 LF22)		Diesel		9973	198	269	01.94-	■	
24.273 FNLLC (D 2865 LF22)		Diesel		9973	198	269	01.94-12.95	■	
26.273 FNLC, 26.273 FNLLC, 26.273 FVLC		Diesel		9973	198	269	01.94-12.95	■	■
27.273DFAC (D 2865 LF22)		Diesel		9973	198	269	01.94-12.95	■	
19.293FAC (D 2865 LF20)		Diesel		9973	213	290	01.94-	■	
19.293FAC (D 2865 LF24)		Diesel		9973	213	290	01.94-	■	
24.293 FNLLC (D 2865 LF24)		Diesel		9973	213	290	01.94-	■	
26.293 FNLC, 26.293 FNLLC, 26.293 FVLC		Diesel		9973	213	290	01.94-	■	■
27.293DFAC (D 2865 LF20)		Diesel		9973	213	290	01.94-	■	

LISTA DE APLICACIONES - BUYERS GUIDE

27.293DFAC (D 2865 LF24)	Diesel	9973	213	290	01.94-	■	
32.293VFC (D 2865 LF24)	Diesel	9973	213	290	08.95-	■	
19.323FAC (D 2865 LF23)	Diesel	9973	235	320	01.94-12.95	■	
24.323 FNLLC (D 2865 LF23)	Diesel	9973	235	320	01.94-12.95	■	
26.323 FNLC,26.323 FNLLC,26.323 FVLC	Diesel	9973	235	320	01.94-12.95	■	■
27.323DFAC (D 2865 LF23)	Diesel	9973	235	320	01.94-12.95	■	
33.323 DFAC (D 2865 LF23)	Diesel	9973	235	320	01.94-12.95	■	
19.343FAC (D 2865 LF21)	Diesel	9973	250	340	01.94-	■	
24.343 FNLLC (D 2865 LF21)	Diesel	9973	250	340	01.94-	■	
26.343 FNLC,26.343 FNLLC,26.343 FVLC	Diesel	9973	250	340	01.94-	■	■
27.343DFAC (D 2865 LF21)	Diesel	9973	250	340	01.94-	■	
32.343VFC (D 2865 LF21)	Diesel	9973	250	340	08.95-	■	
33.343 DFAC (D 2865 LF21)	Diesel	9973	250	340	01.94-	■	
35.343VFC (D 2865 LF21)	Diesel	9973	250	340	08.95-	■	■
41.343VFC (D 2865 LF21)	Diesel	9973	250	340	08.95-	■	■
19.314 FAC	Diesel	11967	228	310	05.01-	■	■
23.314 FNLLC	Diesel	11967	228	310	05.01-	■	
24.314 FNLLRC	Diesel	11967	228	310	05.01-	■	■
26.314 FNLC, FNLLC, FNLLRC, FNLLW, FNLRC, FNLLRC, FVLC	Diesel	11967	228	310	05.01-	■	■
27.314 DFAC (D 2866 LF23)	Diesel	11967	228	310	05.01-	■	■
32.314 VF, VFC (D 2866 LF23)	Diesel	11967	228	310	05.01-	■	■
19.364FAC (D 2866 LF35)	Diesel	11967	265	360	06.98-	■	
23.364 FNLLC	Diesel	11967	265	360	05.01-	■	
24.364 FNLLRC	Diesel	11967	265	360	05.01-	■	■
26.364 FNLC, FNLLC, FNLLRC, FNLLW, FNLRC, FNLLRC, FVLC	Diesel	11967	265	360	05.01-	■	■
27.364 DFAC (D 2866 LF24)	Diesel	11967	265	360	05.01-	■	■
32.364 VF, VFC (D 2866 LF24)	Diesel	11967	265	360	05.01-	■	■
33.364 DFAC	Diesel	11967	265	360	05.01-	■	■
35.364 VF, VFC, VFRC (D 2866 LF24)	Diesel	11967	265	360	05.01-	■	■
41.364 VF, VFC, VFRC	Diesel	11967	265	360	05.01-	■	■
19.373FAC (D 2866 LF21)	Diesel	11967	272	370	01.94-	■	
24.373 FNLLC (D 2866 LF21)	Diesel	11967	272	370	01.94-12.95	■	
26.373 FNLC,26.373 FNLLC,26.373 FVLC	Diesel	11967	272	370	01.94-12.95	■	■
27.373DFAC (D 2866 LF21)	Diesel	11967	272	370	01.94-	■	
33.373 DFAC (D 2866 LF21)	Diesel	11967	272	370	01.94-	■	
35.373 VF, VFC, VFRC	Diesel	11967	272	370	05.01-	■	■
41.373 VF, VFC, VFRC	Diesel	11967	272	370	05.01-	■	■
19.403FAC (D 2866 LF20)	Diesel	11967	294	400	01.94-	■	
24.403 FNLLC (D 2866 LF20)	Diesel	11967	294	400	06.94-02.05	■	
26.403 FNLC,26.403 FNLLC,26.403 FVLC	Diesel	11967	294	400	01.94-	■	■
27.403DFAC (D 2866 LF20)	Diesel	11967	294	400	01.94-	■	
32.403VFC (D 2866 LF20)	Diesel	11967	294	400	08.95-	■	
33.403 DFAC (D 2866 LF20)	Diesel	11967	294	400	01.94-	■	
35.403 VF, VFC, VFRC (D 2866 LF20)	Diesel	11967	294	400	08.95-	■	
41.403 VF, VFC, VFRC (D 2866 LF20)	Diesel	11967	294	400	08.95-	■	
19.414FAC (D 2866 LF31)	Diesel	11967	301	409	06.98-	■	
23.414 FNLLC	Diesel	11967	301	409	05.01-	■	
24.414 FNLLRC	Diesel	11967	301	409	05.01-	■	■
26.414 FNLC, FNLLC, FNLLRC, FNLLW, FNLRC, FNLLRC, FVLC	Diesel	11967	301	409	05.01-	■	■
27.414 DFAC (D 2866 LF25)	Diesel	11967	301	409	05.01-	■	■

LISTA DE APLICACIONES - BUYERS GUIDE

32.414 VF, VFC (D 2866 LF25)	Diesel	11967	301	409	05.01-	■	■
33.414 DFAC	Diesel	11967	301	409	05.01-	■	■
35.414 VF, VFC, VFRC (D 2866 LF25)	Diesel	11967	301	409	05.01-	■	■
41.414 VF, VFC, VFRC	Diesel	11967	301	409	05.01-	■	■
19.423FAC (D 2866 LF22)	Diesel	11967	309	420	01.94-12.95	■	
24.423 FNLLC (D 2866 LF22)	Diesel	11967	309	420	01.94-12.95	■	
26.423 FNLC,26.423 FNLLC,26.423 FVLC	Diesel	11967	309	420	01.94-12.95	■	■
27.423DFAC (D 2866 LF22)	Diesel	11967	309	420	01.94-	■	
33.423 DFAC (D 2866 LF22)	Diesel	11967	309	420	01.94-	■	
35.423 VF, VFC, VFRC	Diesel	11967	309	420	05.01-	■	■
41.423 VF, VFC, VFRC	Diesel	11967	309	420	05.01-	■	■
19.463FAC (D 2876 LF 02)	Diesel	12816	338	460	01.94-	■	
19.464 FAC (D 2876 LF 06)	Diesel	12816	338	460	06.98-	■	■
23.464 FNLLC	Diesel	12816	338	460	05.01-	■	
24.463 FNLLC (D 2876 LF 02)	Diesel	12816	338	460	01.94-	■	
24.464 FNLLRC	Diesel	12816	338	460	05.01-	■	■
26.463 FNLC, FNLLC, FNLLRC, FNLLW, FNLC, FNLLRC, FVLC	Diesel	12816	338	460	01.94-	■	■
26.464 FNLC, FNLLC, FNLLRC, FNLLW, FNLC, FNLLRC, FVLC	Diesel	12816	338	460	05.01-	■	■
27.463DFAC (D 2876 LF 02)	Diesel	12816	338	460	01.94-	■	
27.464 DFAC (D 2876 LF 03)	Diesel	12816	338	460	05.01-	■	■
32.463VFC (D 2876 LF 02)	Diesel	12816	338	460	08.95-	■	
32.464 VF, VFC (D 2876 LF 03)	Diesel	12816	338	460	05.01-	■	■
33.463 DFAC (D 2876 LF 02)	Diesel	12816	338	460	01.94-	■	
33.464 DFAC	Diesel	12816	338	460	05.01-	■	■
35.463 VF, VFC, VFRC (D 2876 LF 02)	Diesel	12816	338	460	08.95-	■	
35.464 VF, VFC, VFRC (D 2876 LF 03)	Diesel	12816	338	460	05.01-	■	■
41.463 VF, VFC, VFRC (D 2876 LF 02)	Diesel	12816	338	460	08.95-	■	
41.464 VF, VFC, VFRC (D 2876 LF 06)	Diesel	12816	338	460	06.98-	■	■
F2000 01.94-				Truck Tractor			
26.273 FNLS,26.273 FVLS	Diesel	9973	198	269	01.94-12.95	■	■
27.273DFAS (D 2865 LF22)	Diesel	9973	198	269	01.94-12.95	■	
19.293FAS (D 2865 LF20)	Diesel	9973	213	290	01.94-	■	
19.293FAS (D 2865 LF24)	Diesel	9973	213	290	01.94-	■	
26.293 FNLS,26.293 FVLS	Diesel	9973	213	290	01.94-	■	■
27.293DFAS (D 2865 LF20)	Diesel	9973	213	290	01.94-	■	
27.293DFAS (D 2865 LF24)	Diesel	9973	213	290	01.94-	■	
19.323FAS (D 2865 LF23)	Diesel	9973	235	320	01.94-12.95	■	
26.323 FNLS,26.323 FVLS	Diesel	9973	235	320	01.94-12.95	■	■
27.323DFAS (D 2865 LF23)	Diesel	9973	235	320	01.94-12.95	■	
33.323 DFAS (D 2865 LF23)	Diesel	9973	235	320	01.94-12.95	■	
19.343FAS (D 2865 LF21)	Diesel	9973	250	340	01.94-	■	
26.343 FNLS,26.343 FVLS	Diesel	9973	250	340	01.94-	■	■
27.343DFAS (D 2865 LF21)	Diesel	9973	250	340	01.94-	■	
33.343 DFAS (D 2865 LF21)	Diesel	9973	250	340	01.94-	■	
19.314FAS (D 2866 LF34)	Diesel	11967	228	310	06.98-	■	
27.314 DFAS	Diesel	11967	228	310	05.01-	■	■
19.364FAS (D 2866 LF35)	Diesel	11967	265	360	06.98-	■	
27.364 DFAS	Diesel	11967	265	360	05.01-	■	■
33.364 DFAS	Diesel	11967	265	360	05.01-	■	■
19.373FAS (D 2866 LF21)	Diesel	11967	272	370	01.94-	■	

LISTA DE APLICACIONES - BUYERS GUIDE

26.373 FNLS,26.373 FVLS		Diesel		11967	272	370	01.94-12.95	■	■
27.373DFAS (D 2866 LF21)		Diesel		11967	272	370	01.94-	■	
33.373 DFAS (D 2866 LF21)		Diesel		11967	272	370	01.94-	■	
19.403FAS (D 2866 LF20)		Diesel		11967	294	400	01.94-	■	
26.403 FNLS,26.403 FVLS		Diesel		11967	294	400	01.94-	■	■
27.403DFAS (D 2866 LF20)		Diesel		11967	294	400	01.94-	■	
33.403 DFAS (D 2866 LF20)		Diesel		11967	294	400	01.94-	■	
19.414FAS (D 2866 LF31)		Diesel		11967	301	409	06.98-	■	
27.414 DFAS		Diesel		11967	301	409	05.01-	■	■
33.414 DFAS		Diesel		11967	301	409	05.01-	■	■
19.423FAS (D 2866 LF22)		Diesel		11967	309	420	01.94-12.95	■	
26.423 FNLS,26.423 FVLS		Diesel		11967	309	420	01.94-12.95	■	■
27.423DFAS (D 2866 LF22)		Diesel		11967	309	420	01.94-12.95	■	
33.423 DFAS (D 2866 LF22)		Diesel		11967	309	420	01.94-	■	
19.463FAS (D 2876 LF 02)		Diesel		12816	338	460	01.94-	■	
19.464FAS (D 2876 LF 06)		Diesel		12816	338	460	06.98-	■	
26.463 FNLS, FVLS, FVLRs		Diesel		12816	338	460	01.94-	■	■
26.464 DFS, DFSL (D 2876 LF 03)		Diesel		12816	338	460	05.01-	■	■
27.463DFAS (D 2876 LF 02)		Diesel		12816	338	460	01.94-	■	
27.464 DFAS		Diesel		12816	338	460	05.01-	■	■
33.463 DFAS (D 2876 LF 02)		Diesel		12816	338	460	01.94-	■	
33.464 DFAS		Diesel		12816	338	460	05.01-	■	■
40.463 DFAS (D 2876 LF 02)		Diesel		12816	338	460	01.94-	■	■
27.604 DFS		Diesel		18273	441	600	04.00-	■	
33.603 DFAS (D 2840 LF20)		Diesel		18273	441	600	06.96-	■	
33.604 DFAS		Diesel		18273	441	600	04.00-	■	■
33.604 DFS		Diesel		18273	441	600	04.00-	■	
F90 06.86-12.97					Concrete Mixer				
32.262VFTM (D 2865 LF/260)		Diesel		9973	191	260	02.89-02.90	■	
F90 06.86-12.97					Dump Truck				
19.262FAK (D 2865 LF/260)		Diesel		9973	191	260	02.89-02.90	■	
19.262FK (D 2865 LF/260)		Diesel		9973	191	260	01.88-02.90	■	
24.262DFK (D 2865 LF/260)		Diesel		9973	191	260	01.88-02.90	■	
26.262DFAK (D 2865 LF/260)		Diesel		9973	191	260	02.89-02.90	■	
26.262DFK (D 2865 LF/260)		Diesel		9973	191	260	01.88-02.90	■	
32.262VFK (D 2865 LF/260)		Diesel		9973	191	260	02.89-02.90	■	
33.262DFAK (D 2865 LF/260)		Diesel		9973	191	260	07.89-02.90	■	
33.262DFK (D 2865 LF/260)		Diesel		9973	191	260	08.88-02.90	■	
35.262VFK (D 2865 LF/260)		Diesel		9973	191	260	02.89-02.90	■	
41.262VFK (D 2865 LF/260)		Diesel		9973	191	260	07.89-02.90	■	
19.272FAK (D 2865 LF02)		Diesel		9973	198	269	02.90-05.95	■	
19.272FAK (D 2865 LF05)		Diesel		9973	198	269	02.90-05.95	■	
19.272FK (D 2865 LF02)		Diesel		9973	198	269	02.90-05.95	■	
19.272FK (D 2865 LF05)		Diesel		9973	198	269	02.90-05.95	■	
24.272DFK (D 2865 LF02)		Diesel		9973	198	269	02.90-12.90	■	
25.272DFK (D 2865 LF02)		Diesel		9973	198	269	09.90-12.92	■	
25.272DFK (D 2865 LF05)		Diesel		9973	198	269	09.90-12.92	■	
26.272DFAK (D 2865 LF02)		Diesel		9973	198	269	02.90-12.92	■	
26.272DFAK (D 2865 LF05)		Diesel		9973	198	269	02.90-12.92	■	
26.272DFK (D 2865 LF02)		Diesel		9973	198	269	02.90-06.96	■	
26.272DFK (D 2865 LF05)		Diesel		9973	198	269	02.90-06.96	■	

LISTA DE APLICACIONES - BUYERS GUIDE

32.272VFK (D 2865 LF02)	Diesel	9973	198	269	02.90-04.95	■
32.272VFK (D 2865 LF05)	Diesel	9973	198	269	02.90-04.95	■
35.272VFK (D 2865 LF02)	Diesel	9973	198	269	02.90-12.92	■
19.322FAK (D 2865 LF03)	Diesel	9973	235	320	02.90-06.96	■
19.322FAK (D 2865 LF06)	Diesel	9973	235	320	02.90-06.96	■
19.322FK (D 2865 LF03)	Diesel	9973	235	320	02.90-05.95	■
19.322FK (D 2865 LF06)	Diesel	9973	235	320	02.90-05.95	■
24.322DFK (D 2865 LF03)	Diesel	9973	235	320	02.90-12.90	■
25.322DFK (D 2865 LF03)	Diesel	9973	235	320	09.90-12.92	■
25.322DFK (D 2865 LF06)	Diesel	9973	235	320	09.90-12.92	■
26.322 DFAK (D 2865 LF03)	Diesel	9973	235	320	02.90-12.92	■
26.322 DFAK (D 2865 LF06)	Diesel	9973	235	320	02.90-12.92	■
26.322DFK (D 2865 LF03)	Diesel	9973	235	320	02.92-06.96	■
26.322DFK (D 2865 LF06)	Diesel	9973	235	320	02.92-06.96	■
32.322VFK (D 2865 LF03)	Diesel	9973	235	320	02.90-06.96	■
32.322VFK (D 2865 LF06)	Diesel	9973	235	320	02.90-06.96	■
35.322VFAK (D 2865 LF03)	Diesel	9973	235	320	02.90-06.96	■
35.322VFAK (D 2865 LF06)	Diesel	9973	235	320	02.90-06.96	■
35.322VFK (D 2865 LF03)	Diesel	9973	235	320	02.90-06.96	■
35.322VFK (D 2865 LF06)	Diesel	9973	235	320	02.90-06.96	■
35.322VFK (D 2865 LF03)	Diesel	9973	235	320	02.90-06.96	■
35.322VFK (D 2865 LF06)	Diesel	9973	235	320	02.90-06.96	■
19.342FAK (D 2865 LF09)	Diesel	9973	250	340	05.94-06.96	■
19.342FK (D 2865 LF09)	Diesel	9973	250	340	05.94-05.95	■
26.342 DFK,26.342 DFLK (D 2865 LF09)	Diesel	9973	250	340	05.94-06.96	■
32.342VFK (D 2865 LF09)	Diesel	9973	250	340	05.94-06.96	■
35.342VFK (D 2865 LF09)	Diesel	9973	250	340	05.94-06.96	■
19.242FK (D 2866 F/240)	Diesel	11967	177	241	01.88-02.89	■
24.242DFK (D 2866 F/240)	Diesel	11967	177	241	01.88-07.89	■
26.242DFAK (D 2866 F/240)	Diesel	11967	177	241	01.90-01.90	■
26.242DFK (D 2866 F/240)	Diesel	11967	177	241	02.90-06.97	■
33.242DFAK (D 2866 F/240)	Diesel	11967	177	241	01.88-08.88	■
33.242DFK (D 2866 F/240)	Diesel	11967	177	241	01.88-08.88	■
19.292FAK (D 2866 LF/290)	Diesel	11967	213	290	05.88-02.90	■
19.292FK (D 2866 LF/290)	Diesel	11967	213	290	07.86-02.90	■
24.292DFK (D 2866 LF/290)	Diesel	11967	213	290	04.87-02.90	■
26.292DFAK (D 2866 LF/290)	Diesel	11967	213	290	05.88-02.90	■
26.292DFK (D 2866 LF/290)	Diesel	11967	213	290	09.87-02.90	■
32.292VFK (D 2866 LF/290)	Diesel	11967	213	290	03.88-02.90	■
33.292DFAK (D 2866 LF/290)	Diesel	11967	213	290	05.88-02.90	■
33.292DFK (D 2866 LF/290)	Diesel	11967	213	290	09.87-02.90	■
35.292VFK (D 2866 LFZ/290)	Diesel	11967	213	290	10.88-04.95	■
41.292VFK (D 2866 LF/290)	Diesel	11967	213	290	10.88-02.90	■
24.302DFK (D 2866 LF04)	Diesel	11967	221	299	05.90-12.90	■
25.302DFK (D 2866 LF04)	Diesel	11967	221	299	09.90-12.91	■
26.302DFAK (D 2866 LF04)	Diesel	11967	221	299	05.90-12.91	■
26.302DFK (D 2866 LF04)	Diesel	11967	221	299	05.90-12.91	■
32.302VFK (D 2866 LF04)	Diesel	11967	221	299	05.90-09.91	■
35.302VFK (D 2866 LF04)	Diesel	11967	221	299	05.90-09.91	■
19.332FAK (D 2866 LF/330)	Diesel	11967	243	330	05.88-02.90	■
19.332FK (D 2866 LF/330)	Diesel	11967	243	330	07.86-02.90	■

LISTA DE APLICACIONES - BUYERS GUIDE

24.332DFK (D 2866 LF/330)	Diesel	11967	243	330	04.87-02.90	■
26.332DFAK (D 2866 LF/330)	Diesel	11967	243	330	05.88-02.90	■
26.332 DFK (D 2866 LF/330)	Diesel	11967	243	330	09.87-02.90	■
32.332VFK (D 2866 LF/330)	Diesel	11967	243	330	03.88-02.90	■
33.332DFAK (D 2866 LF/330)	Diesel	11967	243	330	05.88-02.90	■
33.332DFK (D 2866 LF/330)	Diesel	11967	243	330	09.87-02.90	■
35.332VFK (D 2866 LFZ/330)	Diesel	11967	243	330	10.88-04.95	■
41.332VFK (D 2866 LF/330)	Diesel	11967	243	330	10.88-02.90	■
19.372FK (D 2866 LXF)	Diesel	11967	249	339	05.90-04.95	■
24.372DFK (D 2866 LXF)	Diesel	11967	249	339	05.90-12.90	■
25.372DFK (D 2866 LXF)	Diesel	11967	249	339	09.90-12.92	■
32.372VFK (D 2866 LXF)	Diesel	11967	249	339	05.90-04.95	■
35.372VFK (D 2866 LXF)	Diesel	11967	249	339	02.90-04.95	■
19.362FAK (D 2866 LXF)	Diesel	11967	265	360	05.88-02.90	■
19.362FK (D 2866 KF)	Diesel	11967	265	360	07.86-02.90	■
19.362FK (D 2866 LXF)	Diesel	11967	265	360	07.86-02.90	■
24.362DFK (D 2866 KF)	Diesel	11967	265	360	04.87-02.90	■
24.362DFK (D 2866 LXF)	Diesel	11967	265	360	04.87-02.90	■
26.362DFAK (D 2866 LXF)	Diesel	11967	265	360	05.88-02.90	■
26.362DFK (D 2866 KF)	Diesel	11967	265	360	09.87-02.90	■
26.362DFK (D 2866 LXF)	Diesel	11967	265	360	09.87-02.90	■
32.362VFK (D 2866 LXF)	Diesel	11967	265	360	03.88-02.90	■
33.362DFAK (D 2866 LXF)	Diesel	11967	265	360	05.88-02.90	■
33.362DFK (D 2866 KF)	Diesel	11967	265	360	09.87-02.90	■
33.362DFK (D 2866 LXF)	Diesel	11967	265	360	09.87-02.90	■
35.362VFK (D 2866 LXF)	Diesel	11967	265	360	10.88-02.90	■
41.362VFK (D 2866 LXF)	Diesel	11967	265	360	10.88-02.90	■
48.362VFAK (D 2866 LXF)	Diesel	11967	265	360	07.89-02.90	■
19.372FAK (D 2866 LF03)	Diesel	11967	272	370	02.90-06.96	■
19.372FAK (D 2866 LF05)	Diesel	11967	272	370	02.90-06.96	■
19.372FAK (D 2866 LF15)	Diesel	11967	272	370	02.90-06.96	■
19.372FK (D 2866 LF03)	Diesel	11967	272	370	02.90-05.95	■
19.372FK (D 2866 LF05)	Diesel	11967	272	370	02.90-05.95	■
19.372FK (D 2866 LF15)	Diesel	11967	272	370	02.90-05.95	■
24.372DFK (D 2866 LF03)	Diesel	11967	272	370	02.90-12.90	■
24.372 DFS, 24.372 DFLS (D 2866 LF03)	Diesel	11967	272	370	02.90-04.95	■
25.372DFK (D 2866 LF03)	Diesel	11967	272	370	09.90-12.92	■
25.372DFK (D 2866 LF05)	Diesel	11967	272	370	09.90-12.92	■
26.372DFAK (D 2866 LF03)	Diesel	11967	272	370	01.92-06.96	■
26.372DFAK (D 2866 LF05)	Diesel	11967	272	370	01.92-06.96	■
26.372DFK (D 2866 LF03)	Diesel	11967	272	370	01.92-06.96	■
26.372DFK (D 2866 LF05)	Diesel	11967	272	370	01.92-06.96	■
26.372DFK (D 2866 LF15)	Diesel	11967	272	370	01.92-06.96	■
32.372VFK (D 2866 LF03)	Diesel	11967	272	370	02.90-06.96	■
32.372VFK (D 2866 LF05)	Diesel	11967	272	370	02.90-06.96	■
32.372VFK (D 2866 LF15)	Diesel	11967	272	370	02.90-06.96	■
33.372DFAK (D 2866 LF03)	Diesel	11967	272	370	01.91-06.96	■
33.372DFAK (D 2866 LF05)	Diesel	11967	272	370	01.91-06.96	■
33.372DFAK (D 2866 LF15)	Diesel	11967	272	370	01.91-06.96	■
33.372DFK (D 2866 LF03)	Diesel	11967	272	370	01.91-06.96	■
33.372DFK (D 2866 LF05)	Diesel	11967	272	370	01.91-06.96	■

LISTA DE APLICACIONES - BUYERS GUIDE

33.372DFK (D 2866 LF15)	Diesel	11967	272	370	01.91-06.96	■
35.372VFK (D 2866 LF03)	Diesel	11967	272	370	02.90-06.96	■
35.372VFK (D 2866 LF05)	Diesel	11967	272	370	02.90-06.96	■
35.372VFK (D 2866 LF15)	Diesel	11967	272	370	02.90-06.96	■
35.372VFK (D 2866 LF03)	Diesel	11967	272	370	02.90-12.97	■
35.372VFK (D 2866 LF05)	Diesel	11967	272	370	02.90-12.97	■
35.372VFK (D 2866 LF15)	Diesel	11967	272	370	02.90-12.97	■
19.402FAK (D 2866 LF16)	Diesel	11967	294	400	05.94-06.96	■
19.402FK (D 2866 LF16)	Diesel	11967	294	400	05.94-05.95	■
26.402 DFK,26.402 DFLK (D 2866 LF16)	Diesel	11967	294	400	05.94-06.96	■
32.402VFK (D 2866 LF16)	Diesel	11967	294	400	05.94-06.96	■
33.402DFAK (D 2866 LF16)	Diesel	11967	294	400	05.94-06.96	■
33.402DFK (D 2866 LF16)	Diesel	11967	294	400	05.94-06.96	■
35.402VFK (D 2866 LF16)	Diesel	11967	294	400	05.94-06.96	■
35.402VFK (D 2866 LF16)	Diesel	11967	294	400	05.94-12.97	■
19.422FAK (D 2866 LF06)	Diesel	11967	309	420	02.90-06.96	■
19.422FAK (D 2866 LF09)	Diesel	11967	309	420	02.90-06.96	■
19.422FK (D 2866 LF06)	Diesel	11967	309	420	02.90-05.95	■
19.422FK (D 2866 LF09)	Diesel	11967	309	420	02.90-05.95	■
24.422DFK (D 2866 LF06)	Diesel	11967	309	420	02.90-12.90	■
25.422DFK (D 2866 LF06)	Diesel	11967	309	420	09.90-12.92	■
25.422DFK (D 2866 LF09)	Diesel	11967	309	420	09.90-12.92	■
26.422DFAK (D 2866 LF06)	Diesel	11967	309	420	02.90-12.92	■
26.422DFAK (D 2866 LF09)	Diesel	11967	309	420	02.90-12.92	■
26.422DFK (D 2866 LF06)	Diesel	11967	309	420	02.90-12.95	■
26.422DFK (D 2866 LF09)	Diesel	11967	309	420	02.90-12.95	■
32.422VFK	Diesel	11967	309	420	02.90-06.96	■
33.422DFAK (D 2866 LF06)	Diesel	11967	309	420	01.94-06.96	■
33.422DFAK (D 2866 LF09)	Diesel	11967	309	420	01.94-06.96	■
33.422DFK (D 2866 LF06)	Diesel	11967	309	420	01.94-06.96	■
33.422DFK (D 2866 LF09)	Diesel	11967	309	420	01.94-06.96	■
35.422VFK (D 2866 LF06)	Diesel	11967	309	420	02.90-06.96	■
35.422VFK (D 2866 LF09)	Diesel	11967	309	420	02.90-06.96	■
35.422VFK (D 2866 LF06)	Diesel	11967	309	420	02.90-12.97	■
35.422VFK (D 2866 LF09)	Diesel	11967	309	420	02.90-12.97	■
19.462FK (D 2840 LF 460)	Diesel	18273	338	460	05.87-02.90	■
F90 06.86-12.97				Platform/Chassis		
15.192 FL (D 2146 HM 1 U)	Diesel	9660	141	192	01.89-12.97	■ ■
19.262 F,19.262 FL,19.262 FLL (D 2865 LF/260)	Diesel	9973	191	260	01.88-02.90	■
19.262FA (D 2865 LF/260)	Diesel	9973	191	260	02.89-02.90	■
24.262DF (D 2865 LF/260)	Diesel	9973	191	260	01.88-02.90	■
24.262 FNL,24.262 FNLL,24.262 FVL (D 2865 LF/260)	Diesel	9973	191	260	01.88-02.90	■
26.262DF (D 2865 LF/260)	Diesel	9973	191	260	01.88-02.90	■
26.262DFA (D 2865 LF/260)	Diesel	9973	191	260	02.89-02.90	■
32.262VF (D 2865 LF/260)	Diesel	9973	191	260	02.89-02.90	■
33.262 DF (D 2865 LF/260)	Diesel	9973	191	260	08.88-02.90	■
33.262 DFA (D 2865 LF/260)	Diesel	9973	191	260	07.89-02.90	■
35.262VF (D 2865 LF/260)	Diesel	9973	191	260	02.89-02.90	■
35.262VFA (D 2865 LF/260)	Diesel	9973	191	260	07.89-02.90	■
41.262VF (D 2865 LF/260)	Diesel	9973	191	260	07.89-02.90	■

LISTA DE APLICACIONES - BUYERS GUIDE

19.272 F,19.272 FL,19.272 FLL (D 2865 LF02)	Diesel	9973	198	269	02.90-05.95	■	
19.272 F,19.272 FL,19.272 FLL (D 2865 LF05)	Diesel	9973	198	269	02.90-05.95	■	
19.272FA (D 2865 LF02)	Diesel	9973	198	269	02.90-05.95	■	
19.272FA (D 2865 LF05)	Diesel	9973	198	269	02.90-05.95	■	
24.272DF (D 2865 LF02)	Diesel	9973	198	269	02.90-12.90	■	
24.272 FNL,24.272 FNLL,24.272 FVL (D 2865 LF02)	Diesel	9973	198	269	02.90-05.95	■	
24.272 FNL,24.272 FNLL,24.272 FVL (D 2865 LF05)	Diesel	9973	198	269	02.90-05.95	■	
24.272 FNL,24.272 FNLL,24.272 FVL	Diesel	9973	198	269	02.90-05.95	■	■
25.272DF (D 2865 LF02)	Diesel	9973	198	269	09.90-12.92	■	
25.272DF (D 2865 LF05)	Diesel	9973	198	269	09.90-12.92	■	
25.272 FNL,25.272 FNLL,25.272 FVL (D 2865 LF02)	Diesel	9973	198	269	09.90-10.93	■	
25.272 FNL,25.272 FNLL,25.272 FVL (D 2865 LF05)	Diesel	9973	198	269	09.90-10.93	■	
25.272 FNL,25.272 FNLL,25.272 FVL	Diesel	9973	198	269	09.90-10.93	■	■
26.272DF (D 2865 LF02)	Diesel	9973	198	269	02.90-06.96	■	
26.272DF (D 2865 LF05)	Diesel	9973	198	269	02.90-06.96	■	
26.272DFA (D 2865 LF02)	Diesel	9973	198	269	02.90-12.92	■	
26.272DFA (D 2865 LF05)	Diesel	9973	198	269	02.90-12.92	■	
26.272 FNL,26.272 FNLL (D 2865 LF05)	Diesel	9973	198	269	03.91-05.95	■	
32.272VF (D 2865 LF02)	Diesel	9973	198	269	02.90-04.95	■	
32.272VF (D 2865 LF05)	Diesel	9973	198	269	02.90-04.95	■	
33.272 DF (D 2865 LF05)	Diesel	9973	198	269	10.92-04.95	■	
33.272DFA (D 2865 LF05)	Diesel	9973	198	269	10.92-04.95	■	
35.272VF (D 2865 LF02)	Diesel	9973	198	269	02.90-12.91	■	
41.272VF (D 2865 LF02)	Diesel	9973	198	269	02.90-12.91	■	
19.322 F,19.322 FL,19.322 FLL (D 2865 LF03)	Diesel	9973	235	320	02.90-05.95	■	
19.322 F,19.322 FL,19.322 FLL (D 2865 LF06)	Diesel	9973	235	320	02.90-05.95	■	
19.322FA (D 2865 LF03)	Diesel	9973	235	320	02.90-06.96	■	
19.322FA (D 2865 LF06)	Diesel	9973	235	320	02.90-06.96	■	
24.322DF (D 2865 LF03)	Diesel	9973	235	320	02.90-12.90	■	
24.322 FNL,24.322 FNLL,24.322 FVL (D 2865 LF03)	Diesel	9973	235	320	02.90-05.95	■	
24.322 FNL,24.322 FNLL,24.322 FVL (D 2865 LF06)	Diesel	9973	235	320	02.90-05.95	■	
24.322 FNL,24.322 FNLL,24.322 FVL	Diesel	9973	235	320	02.90-05.95	■	■
25.322 DF, 25.322 DFL (D 2865 LF03)	Diesel	9973	235	320	09.90-12.92	■	
25.322 DF, 25.322 DFL (D 2865 LF06)	Diesel	9973	235	320	09.90-12.92	■	
25.322 FNL, 25.322 FNLL, 25.322 FVL (D 2865 LF03)	Diesel	9973	235	320	09.90-12.92	■	
25.322 FNL, 25.322 FNLL, 25.322 FVL (D 2865 LF06)	Diesel	9973	235	320	09.90-12.92	■	
26.322DF (D 2865 LF03)	Diesel	9973	235	320	02.90-06.96	■	
26.322DF (D 2865 LF06)	Diesel	9973	235	320	02.90-06.96	■	
26.322DFA (D 2865 LF03)	Diesel	9973	235	320	02.90-12.92	■	
26.322DFA (D 2865 LF06)	Diesel	9973	235	320	02.90-12.92	■	
26.322 FNL,26.322 FNLL (D 2865 LF03)	Diesel	9973	235	320	03.91-05.95	■	
26.322 FNL,26.322 FNLL (D 2865 LF06)	Diesel	9973	235	320	03.91-05.95	■	
32.322VF (D 2865 LF03)	Diesel	9973	235	320	02.90-06.96	■	
32.322VF (D 2865 LF06)	Diesel	9973	235	320	02.90-06.96	■	
33.322 DF (D 2865 LF03)	Diesel	9973	235	320	09.91-06.96	■	
33.322 DF (D 2865 LF06)	Diesel	9973	235	320	09.91-06.96	■	
33.322DFA (D 2865 LF03)	Diesel	9973	235	320	09.91-06.96	■	
33.322DFA (D 2865 LF06)	Diesel	9973	235	320	09.91-06.96	■	

LISTA DE APLICACIONES - BUYERS GUIDE

35.322 VK (D 2865 LF03)	Diesel	9973	235	320	02.90-06.96	■
35.322 VK (D 2865 LF06)	Diesel	9973	235	320	02.90-06.96	■
41.322VF (D 2865 LF03)	Diesel	9973	235	320	02.90-06.96	■
41.322VF (D 2865 LF06)	Diesel	9973	235	320	02.90-06.96	■
19.342 F,19.342 FL,19.342 FLL (D 2865 LF09)	Diesel	9973	250	340	05.94-05.95	■
19.342FA (D 2865 LF09)	Diesel	9973	250	340	05.94-06.96	■
24.342 FNL,24.342 FNLL (D 2865 LF09)	Diesel	9973	250	340	05.94-05.95	■
26.342 DF,26.342 DFL (D 2865 LF09)	Diesel	9973	250	340	05.94-06.96	■
33.342 DF (D 2865 LF09)	Diesel	9973	250	340	05.94-06.96	■
33.342DFA (D 2865 LF09)	Diesel	9973	250	340	05.94-06.96	■
35.342VF (D 2865 LF09)	Diesel	9973	250	340	05.94-06.96	■
41.342VF (D 2865 LF09)	Diesel	9973	250	340	05.94-06.96	■
19.242 F,19.242 FL,19.242 FLL (D 2866 F/240)	Diesel	11967	177	241	01.88-01.89	■
24.242DF (D 2866 F/240)	Diesel	11967	177	241	01.88-07.89	■
24.242 FNL,24.242 FNLL,24.242 FVL (D 2866 F/240)	Diesel	11967	177	241	01.88-02.90	■
26.242DF (D 2866 F/240)	Diesel	11967	177	241	02.90-06.97	■
19.292 F,19.292 FL,19.292 FLL (D 2866 LF/290)	Diesel	11967	213	290	07.86-02.90	■
19.292FA (D 2866 LF/290)	Diesel	11967	213	290	05.88-02.90	■
24.292DF (D 2866 LF/290)	Diesel	11967	213	290	04.87-02.90	■
24.292 FNL,24.292 FNLL,24.292 FVL (D 2866 LF/290)	Diesel	11967	213	290	10.86-02.90	■
26.292 DF, 26.292 DFL (D 2866 LF/290)	Diesel	11967	213	290	09.87-02.90	■
26.292DFA (D 2866 LF/290)	Diesel	11967	213	290	05.88-02.90	■
32.292VF (D 2866 LF/290)	Diesel	11967	213	290	03.88-02.90	■
33.292 DF (D 2866 LF/290)	Diesel	11967	213	290	09.87-02.90	■
33.292DFA (D 2866 LF/290)	Diesel	11967	213	290	05.88-02.90	■
35.292VF (D 2866 LFZ/290)	Diesel	11967	213	290	10.88-04.95	■
41.292VF (D 2866 LF/290)	Diesel	11967	213	290	10.88-02.90	■
24.302DF (D 2866 LF04)	Diesel	11967	221	299	05.90-12.90	■
24.302 FNL,24.302 FNLL,24.302 FVL (D 2866 LF04)	Diesel	11967	221	299	05.90-10.90	■
24.302 FNL,24.302 FNLL,24.302 FVL	Diesel	11967	221	299	05.90-10.90	■ ■
25.302DF (D 2866 LF04)	Diesel	11967	221	299	09.90-12.91	■
25.302 FNL, 25.302 FNLL, 25.302 FVL (D 2866 LF04)	Diesel	11967	221	299	09.90-12.91	■
26.302DF (D 2866 LF04)	Diesel	11967	221	299	05.90-12.91	■
26.302DFA (D 2866 LF04)	Diesel	11967	221	299	05.90-12.91	■
26.302 FNL, 26.302 FNLL, 26.302 FVL (D 2866 LF04)	Diesel	11967	221	299	03.91-12.91	■
32.302VF (D 2866 LF04)	Diesel	11967	221	299	05.90-09.91	■
35.302VF (D 2866 LF04)	Diesel	11967	221	299	05.90-09.91	■
19.332 F,19.332 FL,19.332 FLL (D 2866 LF/330)	Diesel	11967	243	330	07.86-02.90	■
19.332FA (D 2866 LF/330)	Diesel	11967	243	330	05.88-02.90	■
24.332DF (D 2866 LF/330)	Diesel	11967	243	330	04.87-02.90	■
24.332 FNL,24.332 FNLL,24.332 FVL (D 2866 LF/330)	Diesel	11967	243	330	10.86-02.90	■
26.332 DF, 26.332 DFL (D 2866 LF/330)	Diesel	11967	243	330	09.87-02.90	■
26.332DFA (D 2866 LF/330)	Diesel	11967	243	330	05.88-02.90	■
32.332VF (D 2866 LF/330)	Diesel	11967	243	330	03.88-02.90	■
33.332DFA (D 2866 LF/330)	Diesel	11967	243	330	05.88-02.90	■
35.332VF (D 2866 LFZ/330)	Diesel	11967	243	330	10.88-04.95	■
41.332VF (D 2866 LF/330)	Diesel	11967	243	330	10.88-02.90	■
19.372 F,19.372 FL,19.372 FLL (D 2866 LXF)	Diesel	11967	249	339	05.90-04.95	■

LISTA DE APLICACIONES - BUYERS GUIDE

24.372DF (D 2866 LXF)	Diesel	11967	249	339	05.90-12.90	■
24.372FVL (D 2866 LXF)	Diesel	11967	249	339	05.90-12.90	■
25.372DF (D 2866 LXF)	Diesel	11967	249	339	09.90-12.92	■
32.372VF (D 2866 LXF)	Diesel	11967	249	339	02.90-06.96	■
35.372VF (D 2866 LXF)	Diesel	11967	249	339	02.90-04.95	■
19.362 F,19.362 FL,19.362 FLL (D 2866 KF)	Diesel	11967	265	360	07.86-02.90	■
19.362 F,19.362 FL,19.362 FLL (D 2866 LXF)	Diesel	11967	265	360	07.86-02.90	■
19.362FA (D 2866 LXF)	Diesel	11967	265	360	05.88-02.90	■
24.362DF (D 2866 KF)	Diesel	11967	265	360	04.87-02.90	■
24.362DF (D 2866 LXF)	Diesel	11967	265	360	04.87-02.90	■
24.362 FNL,24.362 FNLL,24.362 FVL (D 2866 KF)	Diesel	11967	265	360	10.86-02.90	■
24.362 FNL,24.362 FNLL,24.362 FVL (D 2866 LXF)	Diesel	11967	265	360	10.86-02.90	■
26.362 DF, 26.362 DFL (D 2866 KF)	Diesel	11967	265	360	09.87-02.90	■
26.362 DF, 26.362 DFL (D 2866 LXF)	Diesel	11967	265	360	09.87-02.90	■
26.362DFA (D 2866 LXF)	Diesel	11967	265	360	05.88-02.90	■
32.362VF (D 2866 LXF)	Diesel	11967	265	360	03.88-02.90	■
33.362 DF (D 2866 KF)	Diesel	11967	265	360	09.87-02.90	■
33.362 DF (D 2866 LXF)	Diesel	11967	265	360	09.87-02.90	■
33.362DFA (D 2866 LXF)	Diesel	11967	265	360	05.88-02.90	■
35.362VF (D 2866 LXF)	Diesel	11967	265	360	10.88-02.90	■
41.362VF (D 2866 LXF)	Diesel	11967	265	360	10.88-02.90	■
48.362VF (D 2866 LXF)	Diesel	11967	265	360	07.89-02.90	■
48.362VFA (D 2866 LXF)	Diesel	11967	265	360	07.89-02.90	■
19.372 F,19.372 FL,19.372 FLL (D 2866 LF03)	Diesel	11967	272	370	02.90-05.95	■
19.372 F,19.372 FL,19.372 FLL (D 2866 LF05)	Diesel	11967	272	370	02.90-05.95	■
19.372 F,19.372 FL,19.372 FLL (D 2866 LF15)	Diesel	11967	272	370	02.90-05.95	■
19.372FA (D 2866 LF03)	Diesel	11967	272	370	02.90-06.96	■
19.372FA (D 2866 LF05)	Diesel	11967	272	370	02.90-06.96	■
19.372FA (D 2866 LF15)	Diesel	11967	272	370	02.90-06.96	■
19.372FAS (D 2866 LF03)	Diesel	11967	272	370	02.90-06.96	■
19.372FAS (D 2866 LF05)	Diesel	11967	272	370	02.90-06.96	■
19.372FAS (D 2866 LF15)	Diesel	11967	272	370	02.90-06.96	■
24.372DF (D 2866 LF03)	Diesel	11967	272	370	02.90-12.90	■
24.372 FNL,24.372 FNLL,24.372 FVL (D 2866 LF03)	Diesel	11967	272	370	02.90-05.95	■
24.372 FNL,24.372 FNLL,24.372 FVL (D 2866 LF15)	Diesel	11967	272	370	02.90-05.95	■
24.372 FNL,24.372 FNLL,24.372 FVL	Diesel	11967	272	370	02.90-05.95	■ ■
25.372DF (D 2866 LF03)	Diesel	11967	272	370	09.90-12.92	■
25.372DF (D 2866 LF05)	Diesel	11967	272	370	09.90-12.92	■
25.372 FNL, 25.372 FNLL, 25.372 FVL (D 2866 LF03)	Diesel	11967	272	370	09.90-12.92	■
25.372 FNL, 25.372 FNLL, 25.372 FVL (D 2866 LF05)	Diesel	11967	272	370	09.90-12.92	■
26.372 DF,26.372 DFL (D 2866 LF03)	Diesel	11967	272	370	02.90-06.96	■
26.372 DF,26.372 DFL (D 2866 LF05)	Diesel	11967	272	370	02.90-06.96	■
26.372 DF,26.372 DFL (D 2866 LF15)	Diesel	11967	272	370	02.90-06.96	■
26.372DFA (D 2866 LF03)	Diesel	11967	272	370	02.90-12.92	■
26.372DFA (D 2866 LF05)	Diesel	11967	272	370	02.90-12.92	■
26.372 FNL,26.372 FNLL,26.372 FVL (D 2866 LF03)	Diesel	11967	272	370	09.90-12.95	■
26.372 FNL,26.372 FNLL,26.372 FVL (D 2866 LF05)	Diesel	11967	272	370	09.90-12.95	■

LISTA DE APLICACIONES - BUYERS GUIDE

26.372 FNL,26.372 FNLL,26.372 FVL (D 2866 LF15)	Diesel	11967	272	370	09.90-12.95	■	
26.372 FNL,26.372 FNLL,26.372 FVL	Diesel	11967	272	370	09.90-12.95	■	■
32.372VF (D 2866 LF03)	Diesel	11967	272	370	02.90-06.96	■	
32.372VF (D 2866 LF05)	Diesel	11967	272	370	02.90-06.96	■	
32.372VF (D 2866 LF15)	Diesel	11967	272	370	02.90-06.96	■	
33.372 DF (D 2866 LF03)	Diesel	11967	272	370	09.91-06.96	■	
33.372 DF (D 2866 LF05)	Diesel	11967	272	370	09.91-06.96	■	
33.372 DF (D 2866 LF15)	Diesel	11967	272	370	09.91-06.96	■	
33.372DFA (D 2866 LF03)	Diesel	11967	272	370	09.91-06.96	■	
33.372DFA (D 2866 LF05)	Diesel	11967	272	370	09.91-06.96	■	
33.372DFA (D 2866 LF15)	Diesel	11967	272	370	09.91-06.96	■	
35.372VF (D 2866 LF03)	Diesel	11967	272	370	02.90-06.96	■	
35.372VF (D 2866 LF05)	Diesel	11967	272	370	02.90-06.96	■	
35.372VF (D 2866 LF15)	Diesel	11967	272	370	02.90-06.96	■	
35.372VF (D 2866 LF03)	Diesel	11967	272	370	02.90-12.97	■	
35.372VF (D 2866 LF05)	Diesel	11967	272	370	02.90-12.97	■	
35.372VF (D 2866 LF15)	Diesel	11967	272	370	02.90-12.97	■	
40.372DF (D 2866 LF03)	Diesel	11967	272	370	12.91-06.96	■	
40.372DF (D 2866 LF05)	Diesel	11967	272	370	12.91-06.96	■	
40.372DF (D 2866 LF15)	Diesel	11967	272	370	12.91-06.96	■	
40.372DFA (D 2866 LF03)	Diesel	11967	272	370	12.91-06.96	■	
40.372DFA (D 2866 LF05)	Diesel	11967	272	370	12.91-06.96	■	
40.372DFA (D 2866 LF15)	Diesel	11967	272	370	12.91-06.96	■	
41.372VF (D 2866 LF03)	Diesel	11967	272	370	02.90-06.96	■	
41.372VF (D 2866 LF05)	Diesel	11967	272	370	02.90-06.96	■	
41.372VF (D 2866 LF15)	Diesel	11967	272	370	02.90-06.96	■	
19.402 F,19.402 FL,19.402 FLL (D 2866 LF16)	Diesel	11967	294	400	05.94-05.95	■	
19.402 FA (D 2866 LF16)	Diesel	11967	294	400	05.94-06.96	■	
24.402 FNL,24.402 FNLL (D 2866 LF16)	Diesel	11967	294	400	05.94-05.95	■	
26.402 DF,26.402 DFL (D 2866 LF16)	Diesel	11967	294	400	05.94-06.96	■	
26.402 FNL,26.402 FNLL,26.402 FVL (D 2866 LF16)	Diesel	11967	294	400	05.94-06.96	■	
26.402 FNL,26.402 FNLL,26.402 FVL	Diesel	11967	294	400	05.94-06.96	■	■
33.402 DF (D 2866 LF16)	Diesel	11967	294	400	05.94-06.96	■	
33.402DFA (D 2866 LF16)	Diesel	11967	294	400	05.94-06.96	■	
35.402VF (D 2866 LF16)	Diesel	11967	294	400	05.94-06.96	■	
35.402VF (D 2866 LF16)	Diesel	11967	294	400	05.94-12.97	■	
40.402DF (D 2866 LF16)	Diesel	11967	294	400	05.95-06.96	■	
40.402DFA (D 2866 LF16)	Diesel	11967	294	400	05.95-06.96	■	
41.402 VF (D 2866 LF16)	Diesel	11967	294	400	05.94-06.96	■	
19.422 F,19.422 FL,19.422 FLL (D 2866 LF06)	Diesel	11967	309	420	02.90-05.95	■	
19.422 F,19.422 FL,19.422 FLL (D 2866 LF09)	Diesel	11967	309	420	02.90-05.95	■	
19.422 F,19.422 FL,19.422 FLL (D 2866 LF10)	Diesel	11967	309	420	02.90-05.95	■	
19.422FA (D 2866 LF06)	Diesel	11967	309	420	02.90-06.96	■	
19.422FA (D 2866 LF09)	Diesel	11967	309	420	02.90-06.96	■	
24.422DF (D 2866 LF06)	Diesel	11967	309	420	02.90-12.90	■	
24.422 FNL,24.422 FNLL,24.422 FVL (D 2866 LF06)	Diesel	11967	309	420	02.90-05.95	■	
24.422 FNL,24.422 FNLL,24.422 FVL (D 2866 LF09)	Diesel	11967	309	420	02.90-05.95	■	
24.422 FNL,24.422 FNLL,24.422 FVL	Diesel	11967	309	420	02.90-05.95	■	■
25.422DF (D 2866 LF06)	Diesel	11967	309	420	09.90-12.92	■	
25.422DF (D 2866 LF09)	Diesel	11967	309	420	09.90-12.92	■	

LISTA DE APLICACIONES - BUYERS GUIDE

25.422 FNL,25.422 FNLL (D 2866 LF06)	Diesel		11967	309	420	09.90-12.92	■
25.422 FNL,25.422 FNLL (D 2866 LF09)	Diesel		11967	309	420	09.90-12.92	■
26.422 DF,26.422 DFL (D 2866 LF06)	Diesel		11967	309	420	02.90-06.96	■
26.422 DF,26.422 DFL (D 2866 LF09)	Diesel		11967	309	420	02.90-06.96	■
26.422DFA (D 2866 LF06)	Diesel		11967	309	420	02.90-12.92	■
26.422DFA (D 2866 LF09)	Diesel		11967	309	420	02.90-12.92	■
26.422 FNL,26.422 FNLL,26.422 FVL (D 2866 LF06)	Diesel		11967	309	420	09.90-12.95	■
26.422 FNL,26.422 FNLL,26.422 FVL (D 2866 LF09)	Diesel		11967	309	420	09.90-12.95	■
26.422 FNL,26.422 FNLL,26.422 FVL	Diesel		11967	309	420	09.90-12.95	■ ■
32.422VF (D 2866 LF06)	Diesel		11967	309	420	02.90-06.96	■
32.422VF (D 2866 LF09)	Diesel		11967	309	420	02.90-06.96	■
33.422 DF (D 2866 LF06)	Diesel		11967	309	420	09.91-06.96	■
33.422 DF (D 2866 LF09)	Diesel		11967	309	420	09.91-06.96	■
33.422DFA (D 2866 LF06)	Diesel		11967	309	420	09.91-06.96	■
33.422DFA (D 2866 LF09)	Diesel		11967	309	420	09.91-06.96	■
35.422VF (D 2866 LF06)	Diesel		11967	309	420	02.90-06.96	■
35.422VF (D 2866 LF09)	Diesel		11967	309	420	02.90-06.96	■
35.422VF (D 2866 LF06)	Diesel		11967	309	420	02.90-12.97	■
35.422VF (D 2866 LF09)	Diesel		11967	309	420	02.90-12.97	■
40.422DF (D 2866 LF06)	Diesel		11967	309	420	12.91-06.96	■
40.422DF (D 2866 LF09)	Diesel		11967	309	420	12.91-06.96	■
40.422DFA (D 2866 LF06)	Diesel		11967	309	420	12.91-06.96	■
40.422DFA (D 2866 LF09)	Diesel		11967	309	420	12.91-06.96	■
41.422VF (D 2866 LF06)	Diesel		11967	309	420	02.90-06.96	■
41.422VF (D 2866 LF09)	Diesel		11967	309	420	02.90-06.96	■
19.462 F,19.462 FL (D 2840 LF 460)	Diesel		18273	338	460	05.87-02.90	■
24.462DF (D 2840 LF 460)	Diesel		18273	338	460	02.89-02.90	■
24.462FNL (D 2840 LF 460)	Diesel		18273	338	460	04.89-02.90	■
26.462DF (D 2840 LF 460)	Diesel		18273	338	460	02.89-02.90	■
26.462DFA (D 2840 LF 460)	Diesel		18273	338	460	08.89-02.90	■
33.462 DF (D 2840 LF 460)	Diesel		18273	338	460	07.89-02.90	■
33.462DFA (D 2840 LF 460)	Diesel		18273	338	460	07.89-02.90	■
40.462DFA (D 2840 LF 460)	Diesel		18273	338	460	07.89-02.90	■
25.502FNL (D 2840 LF01)	Diesel		18273	368	500	09.90-12.92	■
25.502FNL (D 2840 LF04)	Diesel		18273	368	500	09.90-12.92	■
26.502 DFA (D 2840 LF01)	Diesel		18273	368	500	02.90-12.92	■
26.502 DFA (D 2840 LF04)	Diesel		18273	368	500	02.90-12.92	■
33.502DFA (D 2840 LF01)	Diesel		18273	368	500	09.91-06.96	■
33.502DFA (D 2840 LF04)	Diesel		18273	368	500	09.91-06.96	■
33.502DFA (D 2840 LF06)	Diesel		18273	368	500	09.91-06.96	■
40.502DFA (D 2840 LF01)	Diesel		18273	368	500	02.90-06.96	■
40.502DFA (D 2840 LF04)	Diesel		18273	368	500	02.90-06.96	■
40.502DFA (D 2840 LF06)	Diesel		18273	368	500	02.90-06.96	■
F90 06.86-12.97				Truck Tractor			
19.262FAS (D 2865 LF/260)	Diesel		9973	191	260	02.89-02.90	■
19.262 FS,19.262 FLS,19.262 FLLS (D 2865 LF/260)	Diesel		9973	191	260	01.88-02.90	■
24.262 DFS,24.262 DFSLS (D 2865 LF/260)	Diesel		9973	191	260	01.88-02.90	■
26.262DFAS (D 2865 LF/260)	Diesel		9973	191	260	02.89-02.90	■
26.262DFS (D 2865 LF/260)	Diesel		9973	191	260	01.88-02.90	■
19.272FAS (D 2865 LF02)	Diesel		9973	198	269	02.90-05.95	■

LISTA DE APLICACIONES - BUYERS GUIDE

19.272FAS (D 2865 LF05)	Diesel	9973	198	269	02.90-05.95	■
19.272 FS,19.272 FLS,19.272 FLLS (D 2865 LF02)	Diesel	9973	198	269	02.90-05.95	■
19.272 FS,19.272 FLS,19.272 FLLS (D 2865 LF05)	Diesel	9973	198	269	02.90-05.95	■
24.272 DFS,24.272 DFLS (D 2865 LF02)	Diesel	9973	198	269	02.90-04.95	■
24.272 FNLS,24.272 FVLS (D 2865 LF02)	Diesel	9973	198	269	02.90-05.95	■
24.272 FNLS,24.272 FVLS (D 2865 LF05)	Diesel	9973	198	269	02.90-05.95	■
24.272 FNLS,24.272 FVLS	Diesel	9973	198	269	02.90-05.95	■ ■
25.272 DFS,25.272 DFLS (D 2865 LF02)	Diesel	9973	198	269	09.90-12.92	■
25.272 DFS,25.272 DFLS (D 2865 LF05)	Diesel	9973	198	269	09.90-12.92	■
26.272DFAS (D 2865 LF02)	Diesel	9973	198	269	02.90-12.92	■
26.272DFAS (D 2865 LF05)	Diesel	9973	198	269	02.90-12.92	■
26.272 DFS,26.272 DFLS (D 2865 LF02)	Diesel	9973	198	269	02.90-06.96	■
26.272 DFS,26.272 DFLS (D 2865 LF05)	Diesel	9973	198	269	02.90-06.96	■
26.272 FNLS,26.272 FVLS (D 2865 LF02)	Diesel	9973	198	269	09.90-12.95	■
26.272 FNLS,26.272 FVLS (D 2865 LF05)	Diesel	9973	198	269	09.90-12.95	■
26.272 FNLS,26.272 FVLS	Diesel	9973	198	269	09.90-12.95	■ ■
19.322FAS (D 2865 LF03)	Diesel	9973	235	320	02.90-06.96	■
19.322FAS (D 2865 LF06)	Diesel	9973	235	320	02.90-06.96	■
19.322 FS,19.322 FLS,19.322 FLLS (D 2865 LF03)	Diesel	9973	235	320	02.90-05.95	■
19.322 FS,19.322 FLS,19.322 FLLS (D 2865 LF06)	Diesel	9973	235	320	02.90-05.95	■
24.322 DFS,24.322 DFLS (D 2865 LF03)	Diesel	9973	235	320	02.90-12.90	■
24.322 FNLS,24.322 FVLS (D 2865 LF03)	Diesel	9973	235	320	02.90-05.95	■
24.322 FNLS,24.322 FVLS (D 2865 LF06)	Diesel	9973	235	320	02.90-05.95	■
24.322 FNLS,24.322 FVLS	Diesel	9973	235	320	02.90-05.95	■ ■
25.322 DFS, 25.322 DFLS (D 2865 LF03)	Diesel	9973	235	320	09.90-12.92	■
25.322 DFS, 25.322 DFLS (D 2865 LF06)	Diesel	9973	235	320	09.90-12.92	■
25.322 FNLS,25.322 FVLS (D 2865 LF03)	Diesel	9973	235	320	09.90-12.92	■
25.322 FNLS,25.322 FVLS (D 2865 LF06)	Diesel	9973	235	320	09.90-12.92	■
25.322 FNLS,25.322 FVLS	Diesel	9973	235	320	09.90-12.92	■ ■
26.322DFAS (D 2865 LF03)	Diesel	9973	235	320	02.90-12.92	■
26.322DFAS (D 2865 LF06)	Diesel	9973	235	320	02.90-12.92	■
26.322 DFS,26.322 DFLS (D 2865 LF03)	Diesel	9973	235	320	02.90-06.96	■
26.322 DFS,26.322 DFLS (D 2865 LF06)	Diesel	9973	235	320	02.90-06.96	■
26.322 FNLS,26.322 FVLS (D 2865 LF03)	Diesel	9973	235	320	09.90-12.95	■
26.322 FNLS,26.322 FVLS (D 2865 LF06)	Diesel	9973	235	320	09.90-12.95	■
26.322 FNLS,26.322 FVLS	Diesel	9973	235	320	09.90-12.95	■ ■
19.342FAS (D 2865 LF09)	Diesel	9973	250	340	05.94-06.96	■
19.342 FS,19.342 FLS,19.342 FLLS (D 2865 LF09)	Diesel	9973	250	340	05.94-05.95	■
26.342DFS (D 2865 LF09)	Diesel	9973	250	340	04.94-06.96	■
19.242 FS,19.242 FLS,19.242 FLLS (D 2866 F/240)	Diesel	11967	177	241	01.88-01.89	■
24.242DFS (D 2866 F/240)	Diesel	11967	177	241	01.88-07.89	■
26.242DFS (D 2866 F/240)	Diesel	11967	177	241	02.90-06.97	■
19.292FAS (D 2866 LF/290)	Diesel	11967	213	290	05.88-02.90	■
19.292 FS,19.292 FLS,19.292 FLLS (D 2866 LF/290)	Diesel	11967	213	290	07.86-02.90	■
24.292 DFS,24.292 DFLS (D 2866 LF/290)	Diesel	11967	213	290	04.87-02.90	■
24.292 FNLS,24.292 FVLS (D 2866 LF/290)	Diesel	11967	213	290	10.86-02.90	■
26.292DFAS (D 2866 LF/290)	Diesel	11967	213	290	05.88-02.90	■
26.292DFS (D 2866 LF/290)	Diesel	11967	213	290	09.87-02.90	■

LISTA DE APLICACIONES - BUYERS GUIDE

33.292DFAS (D 2866 LF/290)	Diesel	11967	213	290	05.88-02.90	■	
33.292DFS (D 2866 LF/290)	Diesel	11967	213	290	09.87-02.90	■	
24.302 DFS,24.302 DFLS (D 2866 LF04)	Diesel	11967	221	299	05.90-04.95	■	
25.302 DFS, 25.302 DFLS (D 2866 LF04)	Diesel	11967	221	299	09.90-12.91	■	
25.302 FNLS, 25.302 FVLS (D 2866 LF04)	Diesel	11967	221	299	09.90-12.91	■	
25.302 FNLS, 25.302 FVLS	Diesel	11967	221	299	09.90-12.91	■	■
26.302DFAS (D 2866 LF04)	Diesel	11967	221	299	05.90-12.91	■	
26.302DFS (D 2866 LF04)	Diesel	11967	221	299	05.90-12.91	■	
26.302 FNLS,26.302 FVLS (D 2866 LF04)	Diesel	11967	221	299	09.90-12.91	■	
26.302 FNLS,26.302 FVLS	Diesel	11967	221	299	09.90-12.91	■	■
19.332FAS (D 2866 LF/330)	Diesel	11967	243	330	05.88-02.90	■	
19.332 FS,19.332 FLS,19.332 FLLS (D 2866 LF/330)	Diesel	11967	243	330	07.86-02.90	■	
24.332 DFS,24.332 DFLS (D 2866 LF/330)	Diesel	11967	243	330	04.87-02.90	■	
24.332 FNLS,24.332 FVLS (D 2866 LF/330)	Diesel	11967	243	330	10.86-02.90	■	
26.332DFAS (D 2866 LF/330)	Diesel	11967	243	330	05.88-02.90	■	
26.332DFS (D 2866 LF/330)	Diesel	11967	243	330	09.87-02.90	■	
33.332DFAS (D 2866 LF/330)	Diesel	11967	243	330	05.88-02.90	■	
33.332DFS (D 2866 LF/330)	Diesel	11967	243	330	09.87-02.90	■	
19.372 FS,19.372 FLS,19.372 FLLS (D 2866 LXF)	Diesel	11967	249	339	05.90-04.95	■	
24.372DFS (D 2866 LXF)	Diesel	11967	249	339	05.90-12.90	■	
24.372FVLS (D 2866 LXF)	Diesel	11967	249	339	05.90-12.90	■	
25.372DFS (D 2866 LXF)	Diesel	11967	249	339	09.90-12.92	■	
25.372FVLS (D 2866 LXF)	Diesel	11967	249	339	09.90-10.93	■	
19.362FAS (D 2866 LXF)	Diesel	11967	265	360	05.88-02.90	■	
19.362 FS,19.362 FLS,19.362 FLLS (D 2866 KF)	Diesel	11967	265	360	07.86-02.90	■	
19.362 FS,19.362 FLS,19.362 FLLS (D 2866 LXF)	Diesel	11967	265	360	07.86-02.90	■	
24.362 DFS,24.362 DFLS (D 2866 KF)	Diesel	11967	265	360	04.87-02.90	■	
24.362 DFS,24.362 DFLS (D 2866 LXF)	Diesel	11967	265	360	04.87-02.90	■	
24.362 FNLS,24.362 FVLS (D 2866 KF)	Diesel	11967	265	360	10.86-02.90	■	
24.362 FNLS,24.362 FVLS (D 2866 LXF)	Diesel	11967	265	360	10.86-02.90	■	
26.362DFAS (D 2866 LXF)	Diesel	11967	265	360	05.88-02.90	■	
26.362DFS (D 2866 KF)	Diesel	11967	265	360	09.87-02.90	■	
26.362DFS (D 2866 LXF)	Diesel	11967	265	360	09.87-02.90	■	
33.362DFAS (D 2866 LXF)	Diesel	11967	265	360	05.88-02.90	■	
33.362DFS (D 2866 KF)	Diesel	11967	265	360	09.87-02.90	■	
33.362DFS (D 2866 LXF)	Diesel	11967	265	360	09.87-02.90	■	
19.372 FS,19.372 FLS,19.372 FLLS (D 2866 LF03)	Diesel	11967	272	370	02.90-05.95	■	
19.372 FS,19.372 FLS,19.372 FLLS (D 2866 LF05)	Diesel	11967	272	370	02.90-05.95	■	
19.372 FS,19.372 FLS,19.372 FLLS (D 2866 LF15)	Diesel	11967	272	370	02.90-05.95	■	
24.372 FNLS,24.372 FVLS (D 2866 LF03)	Diesel	11967	272	370	02.90-05.95	■	
24.372 FNLS,24.372 FVLS (D 2866 LF15)	Diesel	11967	272	370	02.90-05.95	■	
24.372 FNLS,24.372 FVLS	Diesel	11967	272	370	02.90-05.95	■	■
25.372 DFS,25.372 DFLS (D 2866 LF03)	Diesel	11967	272	370	09.90-12.92	■	
25.372 DFS,25.372 DFLS (D 2866 LF05)	Diesel	11967	272	370	09.90-12.92	■	
25.372 FNLS,25.372 FVLS (D 2866 LF03)	Diesel	11967	272	370	09.90-10.93	■	
25.372 FNLS,25.372 FVLS (D 2866 LF05)	Diesel	11967	272	370	09.90-10.93	■	
25.372 FNLS,25.372 FVLS	Diesel	11967	272	370	09.90-10.93	■	■
26.372DFAS (D 2866 LF03)	Diesel	11967	272	370	02.90-12.92	■	

LISTA DE APLICACIONES - BUYERS GUIDE

26.372DFAS (D 2866 LF05)	Diesel	11967	272	370	02.90-12.92	■
26.372DFS (D 2866 LF03)	Diesel	11967	272	370	02.90-06.96	■
26.372DFS (D 2866 LF05)	Diesel	11967	272	370	02.90-06.96	■
26.372DFS (D 2866 LF15)	Diesel	11967	272	370	02.90-06.96	■
26.372 FNLS,26.372 FVLS (D 2866 LF03)	Diesel	11967	272	370	01.92-06.96	■
26.372 FNLS,26.372 FVLS (D 2866 LF05)	Diesel	11967	272	370	01.92-06.96	■
26.372 FNLS,26.372 FVLS (D 2866 LF15)	Diesel	11967	272	370	01.92-06.96	■
26.372 FNLS,26.372 FVLS	Diesel	11967	272	370	01.92-06.96	■ ■
33.372DFS (D 2866 LF03)	Diesel	11967	272	370	09.91-06.96	■
33.372DFS (D 2866 LF05)	Diesel	11967	272	370	09.91-06.96	■
33.372DFS (D 2866 LF15)	Diesel	11967	272	370	09.91-06.96	■
19.402FAS (D 2866 LF16)	Diesel	11967	294	400	05.94-06.96	■
19.402 FS,19.402 FLS,19.402 FLLS (D 2866 LF16)	Diesel	11967	294	400	05.94-05.95	■
26.402DFS (D 2866 LF16)	Diesel	11967	294	400	05.94-12.95	■
26.402 FNLS,26.402 FVLS (D 2866 LF16)	Diesel	11967	294	400	05.94-06.96	■
26.402 FNLS,26.402 FVLS	Diesel	11967	294	400	05.94-06.96	■ ■
33.402DFS (D 2866 LF16)	Diesel	11967	294	400	05.94-06.96	■
19.422FAS (D 2866 LF06)	Diesel	11967	309	420	02.90-06.96	■
19.422FAS (D 2866 LF09)	Diesel	11967	309	420	02.90-06.96	■
19.422 FS,19.422 FLS,19.422 FLLS (D 2866 LF06)	Diesel	11967	309	420	02.90-05.95	■
19.422 FS,19.422 FLS,19.422 FLLS (D 2866 LF09)	Diesel	11967	309	420	02.90-05.95	■
19.422 FS,19.422 FLS,19.422 FLLS (D 2866 LF10)	Diesel	11967	309	420	02.90-05.95	■
24.422 DFS,24.422 DFLS (D 2866 LF06)	Diesel	11967	309	420	02.90-12.90	■
25.422 DFS,25.422 DFLS (D 2866 LF06)	Diesel	11967	309	420	09.90-12.92	■
25.422 DFS,25.422 DFLS (D 2866 LF09)	Diesel	11967	309	420	09.90-12.92	■
25.422 FNLS,25.422 FVLS (D 2866 LF06)	Diesel	11967	309	420	09.90-12.92	■
25.422 FNLS,25.422 FVLS (D 2866 LF09)	Diesel	11967	309	420	09.90-12.92	■
25.422 FNLS,25.422 FVLS	Diesel	11967	309	420	09.90-12.92	■ ■
26.422DFAS (D 2866 LF06)	Diesel	11967	309	420	02.90-12.92	■
26.422DFAS (D 2866 LF09)	Diesel	11967	309	420	02.90-12.92	■
26.422DFS (D 2866 LF06)	Diesel	11967	309	420	02.90-12.95	■
26.422DFS (D 2866 LF09)	Diesel	11967	309	420	02.90-12.95	■
26.422 FNLS,26.422 FVLS (D 2866 LF06)	Diesel	11967	309	420	01.92-12.95	■
26.422 FNLS,26.422 FVLS (D 2866 LF09)	Diesel	11967	309	420	01.92-12.95	■
26.422 FNLS,26.422 FVLS	Diesel	11967	309	420	01.92-12.95	■ ■
33.422DFS (D 2866 LF06)	Diesel	11967	309	420	01.94-06.96	■
33.422DFS (D 2866 LF09)	Diesel	11967	309	420	01.94-06.96	■
19.462 FS,19.462 FLS (D 2840 LF 460)	Diesel	18273	338	460	05.87-02.90	■
24.462 DFS (D 2840 LF 460)	Diesel	18273	338	460	02.89-02.90	■
26.462DFAS (D 2840 LF 460)	Diesel	18273	338	460	08.89-02.90	■
26.462DFS (D 2840 LF 460)	Diesel	18273	338	460	02.89-02.90	■
26.502 DFAS (D 2840 LF01)	Diesel	18273	368	500	02.90-12.92	■
26.502 DFAS (D 2840 LF04)	Diesel	18273	368	500	02.90-12.92	■
FOCL			Bus			
12.240 (D 0836 LOH 56)	Diesel	6871	176	240	08.07-	■
12.250 (D 0836 LOH 65)	Diesel	6871	184	250	08.04-	■
HOCL			Bus			
12.220 HOCL/R-NL (D 0826 LOH 15)	Diesel	6871	162	220	04.99-05.09	■
12.220 HOCL/R-NL (D 0826 LOH 17)	Diesel	6871	162	220	04.99-05.09	■

LISTA DE APLICACIONES - BUYERS GUIDE

14.220 HOCL/R-NL (D 0826 LOH 15)	Diesel	6871	162	220	01.98-	■
14.220 HOCL/R-NL (D 0826 LOH 17)	Diesel	6871	162	220	01.98-	■
14.220 HOCL/R-NL (D 0826 LUH 11)	Diesel	6871	162	220	01.98-	■
18.220 HOCL/R-NL, HOCL/SKD(SL) (D 0826 LOH 03)	Diesel	6871	162	220	10.98-05.01	■
18.220 HOCL/R-NL, HOCL/SKD(SL) (D 0826 LOH 04)	Diesel	6871	162	220	10.98-05.01	■
18.220 HOCL/R-NL, HOCL/SKD(SL) (D 0826 LOH 05)	Diesel	6871	162	220	10.98-05.01	■
18.220 HOCL/R-NL, HOCL/SKD(SL) (D 0826 LOH 15)	Diesel	6871	162	220	10.98-05.01	■
18.220 HOCL/R-NL, HOCL/SKD(SL) (D 0826 LOH 17)	Diesel	6871	162	220	10.98-05.01	■
18.220 HOCL/R-NL, HOCL/SKD(SL) (D 0836 LOH 03)	Diesel	6871	162	220	10.98-05.01	■
12.240 HOCL-NL (D 0836 LOH 52)	Diesel	6871	176	240	05.00-	■
12.240 HOCL-NL (D 0836 LOH 56)	Diesel	6871	176	240	05.00-	■
14.240 HOCL-NL (D 0836 LOH 52)	Diesel	6871	176	240	05.00-	■
14.240 HOCL-NL (D 0836 LOH 56)	Diesel	6871	176	240	05.00-	■
18.240 HOCL-NL (D 0836 LOH 52)	Diesel	6871	176	240	08.02-10.09	■
18.240 HOCL-NL (D 0836 LOH 56)	Diesel	6871	176	240	08.02-10.09	■
14.250 HOCL-NL (D 0836 LOH 61)	Diesel	6871	184	250	05.07-	■
18.250 HOCL-NL, HOCL-SKD(SL) (D 0826 LOH 10)	Diesel	6871	184	250	05.07-12.14	■
18.250 HOCL-NL, HOCL-SKD(SL) (D 0836 LOH 61)	Diesel	6871	184	250	05.07-12.14	■
18.280 HOCL-NL (D 0836 LOH 01)	Diesel	6871	206	280	05.02-08.08	■
18.280 HOCL-NL (D 0836 LOH 02)	Diesel	6871	206	280	05.02-08.08	■
18.280 HOCL-NL (D 0836 LOH 51)	Diesel	6871	206	280	05.02-08.08	■
18.280 HOCL-NL (D 0836 LOH 55)	Diesel	6871	206	280	05.02-08.08	■
18.290 HOCL-NL (D 0836 LOH 60)	Diesel	6871	213	290	05.07-12.14	■
18.310 HOCL-NL (D 2066 LUH 07)	Diesel	10518	228	310	01.06-10.09	■
18.310 HOCL-NL (D 2066 LUH 12)	Diesel	10518	228	310	01.06-10.09	■
18.310 HOCL-NL (D 2066 LUH 22)	Diesel	10518	228	310	01.06-10.09	■
18.320 HOCL-NL (D 2066 LUH 42)	Diesel	10518	235	320	05.07-12.14	■
18.310 HOCL/R (D 2866 LOH 25)	Diesel	11967	228	310	01.92-	■
18.310 HOCL/R (D 2866 LOH 27)	Diesel	11967	228	310	01.92-	■
HOCL			Bus			
18.310 HOCL-NL (E 2876 LUH 02)	Gasolina	12816	228	310	05.07-	■
LION'S CITY 03.96-			Bus			
19.240 (D 0836 LOH 52)	Diesel	6871	176	240	05.04-10.09	■
19.280 (D 0836 LOH 40)	Diesel	6871	206	280	05.04-	■
19.280 (D 0836 LOH 51)	Diesel	6871	206	280	05.04-	■
19.290 (D 0836 LOH 64)	Diesel	6871	213	290	05.04-	■
LION'S COACH 09.95-			Bus			
400 (D 2066 LOH 32)	Diesel	10518	294	400	10.15-	■
440 (D 2676 LOH 30)	Diesel	12419	323	439	10.15-	■
C 440, L 440 (D 2676 LOH 30)	Diesel	12419	323	439	10.15-	■
C 480, L 480 (D 2676 LOH 31)	Diesel	12419	353	480	10.15-	■
M 2000 L 04.95-			Concrete Mixer			
26.285 DL-TM, DLR-TM	Diesel	6871	206	280	05.01-	■
M 2000 L 04.95-			Dump Truck			
14.224 LAK, LARK, LAK-L (D 0826 LFL03)	Diesel	6871	162	220	08.95-	■
14.224 LAK, LARK, LAK-L (D 0826 LFL10)	Diesel	6871	162	220	08.95-	■

LISTA DE APLICACIONES - BUYERS GUIDE

14.224 LK, LRK (D 0826 LFL03)	Diesel	6871	162	220	08.95-	■	
14.224 LK, LRK (D 0826 LFL10)	Diesel	6871	162	220	08.95-	■	
15.224 LK, LRK, LK-L (D 0826 LFL03)	Diesel	6871	162	220	08.95-	■	
15.224 LK, LRK, LK-L (D 0826 LFL10)	Diesel	6871	162	220	08.95-	■	
18.224, 18.225, LAK, LARK, LAK-L (D 0826 LFL03)	Diesel	6871	162	220	08.95-	■	
18.224, 18.225, LAK, LARK, LAK-L (D 0826 LFL10)	Diesel	6871	162	220	08.95-	■	
18.224, 18.225, LK, LK-L, LLK, LLK-L, LLRK, LRK (D 0826 LFL03)	Diesel	6871	162	220	08.95-	■	
18.224, 18.225, LK, LK-L, LLK, LLK-L, LLRK, LRK (D 0826 LFL10)	Diesel	6871	162	220	08.95-	■	
18.255 LAK, LARK, LAK-L	Diesel	6871	180	245	05.01-	■	■
18.255 LK, LK-L, LLK, LLK-L, LLRK, LRK	Diesel	6871	180	245	11.02-	■	■
26.224, 26.225, DL-HK, DLR-HK	Diesel	6871	180	245	11.02-	■	■
26.255 DL-HK, DLR-HK	Diesel	6871	180	245	11.02-	■	■
14.263, 14.264 LAK, LARK, LAK-L (D 0826 LFL09)	Diesel	6871	191	260	08.95-	■	
14.263, 14.264 LK, LRK (D 0826 LFL09)	Diesel	6871	191	260	08.95-	■	
15.263, 15.264 LK, LRK, LK-L (D 0826 LFL09)	Diesel	6871	191	260	08.95-	■	
18.263, 18.264, LAK, LARK, LAK-L (D 0826 LFL09)	Diesel	6871	191	260	08.95-	■	
18.263, 18.264, LK, LK-L, LLK, LLK-L, LLRK, LRK (D 0826 LFL09)	Diesel	6871	191	260	08.95-	■	
14.284, 14.285, LAK, LARK, LAK-L (D 0836 LF 01)	Diesel	6871	206	280	06.98-	■	
14.284, 14.285, LK, LRK (D 0836 LF 01)	Diesel	6871	206	280	10.98-	■	
15.284 LK, LRK, LK-L (D 0836 LF 01)	Diesel	6871	206	280	06.98-	■	
18.284, 18.285, LK, LK-L, LLK, LLK-L, LLRK, LRK (D 0836 LF 01)	Diesel	6871	206	280	06.98-	■	
18.284 LAK, LARK, LAK-L (D 0836 LF 01)	Diesel	6871	206	280	06.98-	■	
18.285 LAK, LARK, LAK-L, (LE280B) (D 0836 LFL 03)	Diesel	6871	206	280	09.99-	■	■
26.284, 26.285, DL-HK, DLR-HK	Diesel	6871	206	280	11.02-	■	■
M 2000 L 04.95-				Municipal Vehicle			
14.284, 14.285, LA-LF (D 0836 LF 01)	Diesel	6871	206	280	06.98-	■	
18.284, 18.285, L-KO, LR-KO (D 0836 LF 01)	Diesel	6871	206	280	06.98-	■	
M 2000 L 04.95-				Platform/Chassis			
14.224 LAC, LARC (D 0826 LFL03)	Diesel	6871	162	220	08.95-	■	
14.224 LAC, LARC (D 0826 LFL10)	Diesel	6871	162	220	08.95-	■	
18.224, 18.225, LAC, LARC (D 0826 LFL03)	Diesel	6871	162	220	08.95-	■	
18.224, 18.225, LAC, LARC (D 0826 LFL10)	Diesel	6871	162	220	08.95-	■	
18.224, 18.225, LAC, LARC (D 0836 LFL 02)	Diesel	6871	162	220	08.95-	■	
20.224, 20225 LNLC, LNLLC	Diesel	6871	162	224	05.01-	■	
14.263, 14.264 LAC, LARC (D 0826 LFL09)	Diesel	6871	191	260	08.95-	■	
18.263, 18.264, LAC, LARC (D 0826 LFL09)	Diesel	6871	191	260	08.95-	■	
14.284, 14.285, LAC, LARC (D 0836 LF 01)	Diesel	6871	206	280	06.98-	■	
18.284 LAC, LARC (D 0836 LF 01)	Diesel	6871	206	280	06.98-	■	
18.285 LAC, LARC (LE280B) (D 0836 LFL 03)	Diesel	6871	206	280	09.99-	■	■
M 2000 M 08.95-12.05				Dump Truck			
14.224 MAK, MAK-L, MARK (D 0826 LF15)	Diesel	6871	162	220	08.95-12.05	■	
14.224 MAK, MAK-L, MARK (D 0826 LF18)	Diesel	6871	162	220	08.95-12.05	■	
14.224 MK (D 0826 LF15)	Diesel	6871	162	220	08.95-12.05	■	
14.224 MK (D 0826 LF18)	Diesel	6871	162	220	08.95-12.05	■	
18.224 MAK, MAK-L, MARK (D 0826 LF15)	Diesel	6871	162	220	08.95-12.05	■	
18.224 MAK, MAK-L, MARK (D 0826 LF18)	Diesel	6871	162	220	08.95-12.05	■	

LISTA DE APLICACIONES - BUYERS GUIDE

18.224 MK, MK-L, MLK, MLRK, MRK (D 0826 LF15)		Diesel		6871	162	220	08.95-12.05	■	
18.224 MK, MK-L, MLK, MLRK, MRK (D 0826 LF18)		Diesel		6871	162	220	08.95-12.05	■	
18.225 MK, MK-L, MLK, MLRK, MRK		Diesel		6871	162	220	10.00-12.05	■	■
18.255 MAK, MAK-L, MARK		Diesel		6871	180	245	10.00-12.05	■	■
18.255 MK, MK-L, MLK, MLRK, MRK		Diesel		6871	180	245	11.02-12.05	■	■
18.264 MAK, MAK-L, MARK (D 0826 LF17)		Diesel		6871	191	260	08.95-12.05	■	
18.264 MK, MK-L, MLK, MLRK, MRK (D 0826 LF17)		Diesel		6871	191	260	08.95-12.05	■	
14.284 MAK, MAK-L, MARK (D 0836 LF 01)		Diesel		6871	206	280	06.98-12.05	■	
18.284 MAK, MAK-L, MARK (D 0836 LF 01)		Diesel		6871	206	280	06.98-12.05	■	
18.284 MK, MK-L, MLK, MLRK, MRK (D 0836 LF 01)		Diesel		6871	206	280	06.98-12.05	■	
18.285 MK, MK-L, MLK, MLRK, MRK		Diesel		6871	206	280	02.03-12.05	■	■
M 2000 M 08.95-12.05					Municipal Vehicle				
14.284 MA-KO, MA-LF (D 0836 LF 01)		Diesel		6871	206	280	06.98-12.05	■	
M 2000 M 08.95-12.05					Platform/Chassis				
18.224 MAC, MARC (D 0826 LF15)		Diesel		6871	162	220	08.95-12.05	■	
18.224 MAC, MARC (D 0826 LF18)		Diesel		6871	162	220	08.95-12.05	■	
18.264 MAC, MARC (D 0826 LF17)		Diesel		6871	191	260	08.95-12.05	■	
18.284 MAC, MARC (D 0836 LF 01)		Diesel		6871	206	280	06.98-12.05	■	
M 2000 M 08.95-12.05					Truck Tractor				
18.225 MLS, MLRS		Diesel		6871	162	220	02.03-12.05	■	
NG 08.92-					Bus				
NG 262, NG 272 (D 0826 LUH 01)		Diesel		6871	191	260	08.92-07.98	■	■
NG 262 (D 2865 LUH09)		Diesel		9973	191	260	06.97-07.98	■	■
NG 312 (D 2865 LUH07)		Diesel		9973	228	310	09.95-07.98	■	■
NG 313 (D 2066 LUH 12)		Diesel		10518	228	310	01.06-10.09	■	
NG 313 (D 2066 LUH 22)		Diesel		10518	228	310	01.06-10.09	■	
NG 323 (D 2066 LUH 42)		Diesel		10518	235	320	05.07-12.14	■	
NG 353 (D 2066 LUH 13)		Diesel		10518	257	350	05.07-12.14	■	
NG 353 (D 2066 LUH 23)		Diesel		10518	257	350	05.07-12.14	■	
NG 363 (D 2066 LUH 48)		Diesel		10518	264	360	05.07-12.14	■	
NG 262, NG 263 (D 2866 LUH 22)	01/00-	Diesel		11967	191	260	07.98-	■	■
NG 312, NG 313 (D 2866 LUH26)	01/00-	Diesel		11967	228	310	07.98-	■	■
NG 08.92-					Bus				
NG 313 (E 2876 LUH 02)		Gasolina		12816	228	310	05.07-12.14	■	
NL 09.88-					Bus				
NL 202, NL 222, NL 223 (D 0826 LUH 03)	01/00-	Diesel		6871	157	214	08.92-	■	■
NL 202, NL 222, NL 223 (D 0826 LUH 12)	01/00-	Diesel		6871	157	214	08.92-	■	■
NL 202, NL 262, NL 263 (D 0826 LUH)		Diesel		6871	184	250	04.91-	■	■
NL 262 (D 2865 LUH09)	01/00-	Diesel		9973	191	260	06.97-	■	■
NL 273 (D 2066 LUH 11)		Diesel		10518	199	271	01.06-10.09	■	■
NL 273 (D 2066 LUH 21)		Diesel		10518	199	271	01.06-10.09	■	■
NL 283 (D 2066 LUH 41)		Diesel		10518	206	280	08.12-	■	
NL 313 (D 2066 LUH 12)		Diesel		10518	228	310	01.06-10.09	■	
NL 313 (D 2066 LUH 22)		Diesel		10518	228	310	01.06-10.09	■	
NL 323 (D 2066 LUH 42)		Diesel		10518	235	320	05.07-	■	
NL 262, NL 263 (D 2866 LUH 22)	01/00-	Diesel		11967	191	260	07.98-	■	■
NL 313 (D 2866 LUH26)		Diesel		11967	228	310	07.98-	■	

LISTA DE APLICACIONES - BUYERS GUIDE

NL 09.88-					Bus				
NL 243 (E 2866 DUH 03)		Gasolina		11967	180	245	05.07-12.14	■	■
NL 243 (E 2866 DUH 04)		Gasolina		11967	180	245	05.07-12.14	■	■
NL 313 (E 2876 LUH 02)		Gasolina		12816	228	310	05.07-12.14	■	
NM 08.87-					Bus				
NM 222, NM 223 (D 0826 LOH 15)	01/00-	Diesel		6871	162	220	02.96-	■	
NM 222, NM 223 (D 0826 LUH 12)	01/00-	Diesel		6871	162	220	02.96-	■	
TGA 03.00-					Concrete Mixer				
33.430 (D 2066 LF 01)		Diesel		10518	316	430	09.07-	■	
TGA 03.00-					Dump Truck				
35.440		Diesel		10518	324	440	07.06-	■	
26.410 (D 2866 LF28)		Diesel		11967	301	410	02.02-	■	
TGA 03.00-					Municipal Vehicle				
26.430, 26.440		Diesel		10518	316	430	06.05-	■	
TGA 03.00-					Platform/Chassis				
28.310		Diesel		10518	228	310	07.06-	■	
28.320		Diesel		10518	228	310	07.06-	■	■
28.350, 28.360		Diesel		10518	257	350	06.04-	■	■
35.360		Diesel		10518	265	360	07.06-	■	
28.390 (D 2066 LF 02)		Diesel		10518	287	390	07.06-	■	
28.390 (D 2066 LF 12)		Diesel		10518	287	390	07.06-	■	
28.390, 28.400		Diesel		10518	287	390	06.04-	■	■
28.400 (D 2066 LF 26)		Diesel		10518	294	400	07.06-	■	
28.400 (D 2066 LF 37)		Diesel		10518	294	400	07.06-	■	
35.400		Diesel		10518	294	400	11.06-	■	
26.430, 26.440		Diesel		10518	316	430	05.04-	■	■
28.430		Diesel		10518	316	430	09.02-10.08	■	
28.440		Diesel		10518	324	440	07.06-	■	
35.440		Diesel		10518	324	440	11.06-	■	
28.310		Diesel		11967	228	310	07.06-	■	
26.360		Diesel		11967	265	360	09.00-	■	■
28.360		Diesel		11967	265	360	07.06-	■	
28.410		Diesel		11967	301	410	07.06-	■	
26.480		Diesel		12419	353	480	02.06-	■	■
35.480		Diesel		12419	353	480	11.06-	■	
26.540		Diesel		12419	397	540	08.06-	■	■
26.480		Diesel		12816	353	480	09.02-	■	■
26.510		Diesel		12816	375	510	12.00-	■	■
26.530		Diesel		12816	390	530	09.02-	■	■
TGA 03.00-					Truck Tractor				
26.310		Diesel		11967	228	310	12.00-	■	■
26.360		Diesel		11967	265	360	12.00-	■	■
26.460		Diesel		12816	338	460	12.00-	■	■
26.480		Diesel		12816	353	480	09.02-	■	■
26.510		Diesel		12816	375	510	12.00-	■	■
26.530		Diesel		12816	390	530	09.02-	■	■
ÜL 09.89-					Bus				
ÜL 312,ÜL 322 (D 2865 LUH07)		Diesel		9973	228	310	04.92-09.96	■	

LISTA DE APLICACIONES - BUYERS GUIDE

ÜL 312,ÜL 322 (D 2865 LUH08)	Diesel		9973	228	310	04.92-09.96	■	
ÜL 313 (D 2866 LUH 20)	Diesel		11967	228	310	09.96-	■	■
ÜL 313 (D 2866 LUH26)	Diesel		11967	228	310	09.96-	■	■
ÜL 353 (D 2866 LUH 21)	Diesel		11967	257	350	06.97-	■	■
RENAULT TRUCKS								
Agora 01.96-				Bus				
Agora (MIDR 06.20.45 I41)	Diesel		9840	186	253	01.96-	■	■
Agora (MIDR 06.20.45 I41)	Diesel		9840	186	253	01.96-	■	■
SETRA								
300 Series 09.91-02.02				Bus				
S315GT-HD, S315HD, S315HDH (OM 445.935)	Diesel		10964	213	290	01.96-	■	■
S315GT-HD, S315HD, S315HDH (D 2866 LOH 23)	Diesel		11967	294	400	09.94-02.02	■	■
S316HDS, S317GT-HD, S317HD, S317HDH (OM 446.924)	Diesel		14618	280	381	09.91-02.02	■	■
S316HDS, S317GT-HD, S317HD, S317HDH (OM 446.930)	Diesel		14618	280	381	09.91-02.02	■	■
S316HDS, S317GT-HD, S317HD, S317HDH (OM 446.931)	Diesel		14618	280	381	09.91-02.02	■	■