

LISTA DE APLICACIONES - BUYERS GUIDE

151078-111

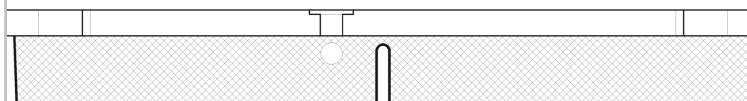
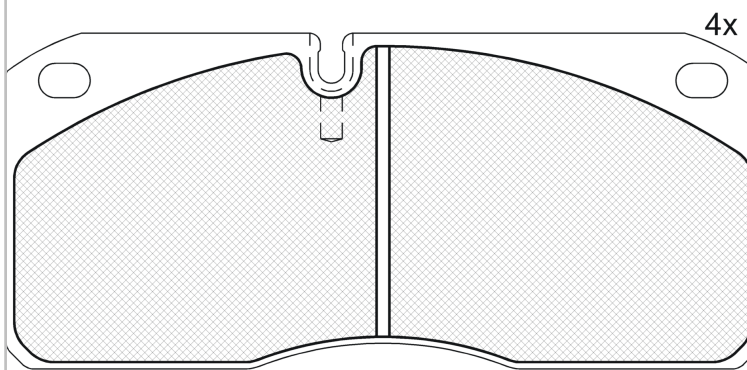


8 424073 052186

Qty: 660

Weight: 4.125

O.E.M.	MAKE
190 6043	IVECO
190 6402	IVECO



1 - Ref. 610223 E



1 - Ref. 690122 E

151078-111



90R-01178/690



Lucas - Girling

175.45x78.1x22

WVA

29067

MAKE

IVECO



Trac.	CC	Kw	CV
-------	----	----	----



Front / Rear

IVECO

10.00-07.07

Municipal Vehicle

100 E 21 tector (F4AE0681D)	Diesel	5883	154	209	09.00-07.07	■	■
100 E 25 W tector (F4AE3681D)	Diesel	5883	185	251	05.06-07.07	■	■

EuroCargo I-III 01.91-09.15

Dump Truck

100 E 17 K tector, 100 E 17 DK tector (F4AE0481A)	Diesel	3922	125	170	09.00-09.15	■	■
80 E 17 K, 80 E 17 DK tector, 80 E 18 K tector (F4AE0481A)	Diesel	3922	125	170	09.00-09.15	■	■
80 E 17 K, 80 E 17 DK tector, 80 E 18 K tector (F4AE3481B)	Diesel	3922	125	170	09.00-09.15	■	■
90 E 17 K tector, 90 E 17 DK tector (F4AE0481A)	Diesel	3922	125	170	09.00-09.15	■	■
100 E 18 K tector (F4AE3481B)	Diesel	3922	130	177	09.06-09.15	■	■
100 E 15 K (8060.25R.4200 LTC)	Diesel	5861	105	143	01.91-09.15	■	■
80 E 15 K (8060.25R.4200 LTC)	Diesel	5861	105	143	01.91-09.15	■	■
80 E 15 K (8060.25R.4200 LTC)	Diesel	5861	105	143	01.91-09.15	■	■
100 E 18 K (8060.25V.4000)	Diesel	5861	130	177	01.91-09.15	■	■
80 E 18 K (8060.25V.4000)	Diesel	5861	130	177	01.91-09.15	■	■
80 E 18 K (8060.25V.4000)	Diesel	5861	130	177	01.91-09.15	■	■
100 E 18 K tector, 100 E 18 DK tector (F4AE0681E)	Diesel	5883	134	181	09.00-09.15	■	■
80 E 18 K tector, 80 E 18 DK tector (F4AE0681E)	Diesel	5883	134	181	09.00-09.15	■	■
90 E 18 K tector, 90 E 18 DK tector (F4AE0681E)	Diesel	5883	134	181	09.00-09.15	■	■
100 E 21 K tector, 100 E 21 DK tector (F4AE0681D)	Diesel	5883	154	209	09.00-09.15	■	■
180 E 21 K tector (F4AE0681D)	Diesel	5883	154	209	09.00-09.15	■	■

LISTA DE APLICACIONES - BUYERS GUIDE

80 E 21 K, 80 E 21 DK tector, 80 E 22 K tector (F4AE0681D)	Diesel		5883	154	209	09.00-09.15	■	■
80 E 21 K, 80 E 21 DK tector, 80 E 22 K tector (F4AE3681B)	Diesel		5883	154	209	09.00-09.15	■	■
90 E 21 K tector, 90 E 21 DK tector (F4AE0681D)	Diesel		5883	154	209	09.00-09.15	■	■
EuroCargo I-III 01.91-09.15				Platform/Chassis				
80 EL 15 tector (F4AE0481C)	Diesel		3922	110	149	09.00-09.15	■	■
80 EL 16 tector, 80 EL 16 P tector (F4AE3481D)	Diesel		3922	118	160	09.06-09.15	■	■
100 E 17, 100 E 17 DP tector, 100 E 18 tector (F4AE0481A)	Diesel		3922	125	170	09.00-09.15	■	■
100 E 17, 100 E 17 DP tector, 100 E 18 tector (F4AE3481B)	Diesel		3922	125	170	09.00-09.15	■	■
80 E 17, 80 E 17 D tector, 80 E 17 DP tector, 80 E 18 tector (F4AE0481A)	Diesel		3922	125	170	09.00-09.15	■	■
80 E 17, 80 E 17 D tector, 80 E 17 DP tector, 80 E 18 tector (F4AE3481B)	Diesel		3922	125	170	09.00-09.15	■	■
90 E 17, 90 E 17D tector, 90 E 17 DP tector, 90 E 18 tector (F4AE0481A)	Diesel		3922	125	170	09.00-09.15	■	■
90 E 17, 90 E 17D tector, 90 E 17 DP tector, 90 E 18 tector (F4AE3481B)	Diesel		3922	125	170	09.00-09.15	■	■
100 E 18 tector, 100 E 18 P tector, 100 E 18 FP tector (F4AE3481B)	Diesel		3922	130	177	09.06-09.15	■	■
80 E 18 tector, 80 E 18 P tector, 80 E 18 FP tector (F4AE3481B)	Diesel		3922	130	177	09.06-09.15	■	■
100 E 15, 100 E 15 P (8060.25R.4200 LTC)	Diesel		5861	105	143	01.91-09.15	■	■
100 E 15, 100 E 15 P (8060.45R.5000)	Diesel		5861	105	143	01.91-09.15	■	■
100 E 15, 100 E 15 P (8060.45R.5001)	Diesel		5861	105	143	01.91-09.15	■	■
100 E 15, 100 E 15 P (8060.45R.5003)	Diesel		5861	105	143	01.91-09.15	■	■
100 E 15, 100 E 15 P (8060.45R.5005)	Diesel		5861	105	143	01.91-09.15	■	■
80 E 15, 80 E 15 P (8060.25R.4200 LTC)	Diesel		5861	105	143	01.91-09.15	■	■
100 E 18, 100 E 18 P (8060.25V.4000)	Diesel		5861	130	177	01.91-09.15	■	■
80 E 18, 80 E 18 P, 18 E 80 FP (8060.25V.4000)	Diesel		5861	130	177	01.91-09.15	■	■
80 E 18, 80 E 18 P, 18 E 80 FP (8060.25V.4000)	Diesel		5861	130	177	01.91-09.15	■	■
100 E 21, 100 E 21 P (8060.45.4100 TCA)	Diesel		5861	152	207	01.91-09.15	■	■
100 E 21, 100 E 21 P (8060.45.4180)	Diesel		5861	152	207	01.91-09.15	■	■
80 E 21, 80 E 21 P, 21 E 80 FP (8060.45.4100 TCA)	Diesel		5861	152	207	01.91-09.15	■	■
80 E 21, 80 E 21 P, 21 E 80 FP (8060.45.4180)	Diesel		5861	152	207	01.91-09.15	■	■
80E21, 80E21P, 80E21FP, 80EL21, 80EL21P (8060.45.4100 TCA)	Diesel		5861	152	207	01.91-09.15	■	■
80E21, 80E21P, 80E21FP, 80EL21, 80EL21P (8060.45.4180)	Diesel		5861	152	207	01.91-09.15	■	■
90 E 18 tector, 90 E 18 D tector, 90 E 18 DP tector (F4AE0681E)	Diesel		5883	130	177	09.00-09.15	■	■
100 E 18 tector, 100 E 18 P tector, 100 E 18 FP tector (F4AE0681D)	Diesel		5883	134	181	09.00-09.15	■	■
100 E 18 tector, 100 E 18 P tector, 100 E 18 FP tector (F4AE0681E)	Diesel		5883	134	181	09.00-09.15	■	■
100 E 18 W tector, 100 E 18 WS tector (F4AE0681E)	Diesel		5883	134	181	09.00-09.15	■	■
100 E 18 W tector, 100 E 18 WS tector (F4AE3681C)	Diesel		5883	134	181	09.00-09.15	■	■
80 E 18 tector, 80 E 18 D tector, 80 E 18 DP tector (F4AE0681D)	Diesel		5883	134	181	09.00-09.15	■	■
80 E 18 tector, 80 E 18 D tector, 80 E 18 DP tector (F4AE0681E)	Diesel		5883	134	181	09.00-09.15	■	■
100 E 21, 100 E 21 DP tector, 100 E 22 tector (F4AE0681D)	Diesel		5883	154	209	09.00-09.15	■	■
100 E 21, 100 E 21 DP tector, 100 E 22 tector (F4AE3681B)	Diesel		5883	154	209	09.00-09.15	■	■
100 E 21 W tector, 100 E 21 WS tector (F4AE0681D)	Diesel		5883	154	209	09.00-09.15	■	■

LISTA DE APLICACIONES - BUYERS GUIDE

80 E 21, 80 E 21 D tector, 80 E 21 DP tector, 80 E 22 tector (F4AE0681D)	Diesel		5883	154	209	09.00-09.15	■	■
80 E 21, 80 E 21 D tector, 80 E 21 DP tector, 80 E 22 tector (F4AE3681B)	Diesel		5883	154	209	09.00-09.15	■	■
90 E 21, 90 E 21 D tector, 90 E 21 DP tector, 90 E 22 tector (F4AE0681D)	Diesel		5883	154	209	09.00-09.15	■	■
90 E 21, 90 E 21 D tector, 90 E 21 DP tector, 90 E 22 tector (F4AE3681B)	Diesel		5883	154	209	09.00-09.15	■	■
EuroCargo I-III 01.91-09.15				Truck Tractor				
180 E 21 T (8060.45.4100 TCA)	Diesel		5861	152	207	01.91-09.15	■	■
EuroFire 01.91-				Municipal Vehicle				
75 E 14 (8040.45)	Diesel		3908	100	136	01.91-09.00	■	■
95 E 18 W (8060.45B)	Diesel		5861	130	177	01.93-09.00	■	■
Zeta 01.79-12.92				Bus				
A 60-10 (8340.04.040)	Diesel		4570	73	99	11.79-06.88	■	■
Zeta 01.79-12.92				Dump Truck				
50-8 H (8040.04.200)	Diesel		3666	63	86	01.83-12.86	■	■
50-9 H (8040.05.230)	Diesel		3908	65	88	01.87-03.91	■	■
65-12 H (8040.25.200)	Diesel		3908	85	116	01.87-03.91	■	
79-12 H (8040.25.200)	Diesel		3908	85	116	01.87-03.91	■	
79-12 H (8040.25.220)	Diesel		3908	85	116	01.87-03.91	■	
79-12 H (8040.25.200)	Diesel		3908	85	116	01.87-03.91	■	
79-12 H (8040.25.220)	Diesel		3908	85	116	01.87-03.91	■	
50-10H (8340.04.200)	Diesel		4570	74	101	01.79-12.86	■	■
50-10H (8340.04.250)	Diesel		4570	74	101	01.79-12.86	■	■
50-10H (8340.04.300)	Diesel		4570	74	101	01.79-12.86	■	■
50-10H (8340.04.362)	Diesel		4570	74	101	01.79-12.86	■	■
60-10H (8340.04.200)	Diesel		4570	74	101	11.79-12.86	■	■
60-10H (8340.04.250)	Diesel		4570	74	101	11.79-12.86	■	■
65-10H (8340.04.200)	Diesel		4570	74	101	11.79-01.87	■	■
65-10H (8340.04.250)	Diesel		4570	74	101	11.79-01.87	■	■
65-10H (8340.04.300)	Diesel		4570	74	101	11.79-01.87	■	■
65-10H (8340.04.350)	Diesel		4570	74	101	11.79-01.87	■	■
79-13 (8060.04.060)	Diesel		5500	96	131	11.79-12.83	■	■
79-13 (8060.04.660)	Diesel		5500	96	131	11.79-12.83	■	■
109-14 H (8060.04.689)	Diesel		5500	99	135	06.83-12.85	■	■
95-14 H (8060.04.669)	Diesel		5500	99	135	07.83-10.85	■	■
109-14 H (8060.05.289)	Diesel		5861	101	137	11.85-03.91	■	
79-14 H (8060.05.280)	01/87-	Diesel	5861	101	137	12.85-03.91	■	
79-14 H (8060.05.280)	01/87-	Diesel	5861	101	137	12.85-03.91	■	
95-14 H (8060.04.669)	Diesel		5861	101	137	11.85-03.91	■	
Zeta 01.79-12.92				Estate Van				
50-8 V (8040.04.200)	Diesel		3666	63	86	01.83-12.86	■	■
60-8 (8040.04.200)	Diesel		3666	63	86	11.79-12.82	■	■
50-9 V (8040.05.230)	Diesel		3908	65	88	01.87-03.91	■	■
60-11 V (8040.25.230 R)	Diesel		3908	74	101	01.87-03.91	■	
65-12 V (8040.25.200)	Diesel		3908	85	116	01.87-03.91	■	
79-12 V (8040.25.200)	Diesel		3908	85	116	01.87-03.91	■	
79-12 V (8040.25.220)	Diesel		3908	85	116	01.87-03.91	■	
79-12 V (8040.25.200)	Diesel		3908	85	116	01.87-03.91	■	
79-12 V (8040.25.220)	Diesel		3908	85	116	01.87-03.91	■	
50-10V (8340.04.200)	Diesel		4570	74	101	01.79-12.86	■	■

LISTA DE APLICACIONES - BUYERS GUIDE

50-10V (8340.04.250)		Diesel		4570	74	101	01.79-12.86	■	■
50-10V (8340.04.300)		Diesel		4570	74	101	01.79-12.86	■	■
50-10V (8340.04.362)		Diesel		4570	74	101	01.79-12.86	■	■
60-10V (8340.04.200)		Diesel		4570	74	101	11.79-12.86	■	■
60-10V (8340.04.250)		Diesel		4570	74	101	11.79-12.86	■	■
65-10V (8340.04.200)		Diesel		4570	74	101	11.79-01.87	■	■
65-10V (8340.04.250)		Diesel		4570	74	101	11.79-01.87	■	■
65-10V (8340.04.300)		Diesel		4570	74	101	11.79-01.87	■	■
65-10V (8340.04.350)		Diesel		4570	74	101	11.79-01.87	■	■
79-13 (8060.04.060)		Diesel		5500	96	131	11.79-12.83	■	■
79-13 (8060.04.660)		Diesel		5500	96	131	11.79-12.83	■	■
79-14 V (8060.05.280)	01/87-	Diesel		5861	101	137	12.85-03.91	■	
79-14 V (8060.05.280)	01/87-	Diesel		5861	101	137	12.85-03.91	■	
Zeta 01.79-12.92					Platform/Chassis				
50-8 (8040.04.200)		Diesel		3666	63	86	01.83-12.86	■	■
60-8 (8040.04.200)		Diesel		3666	63	86	11.79-12.83	■	■
50-9 (8040.05.230)		Diesel		3908	65	88	01.87-03.91	■	■
65-9 (8040.05.230)		Diesel		3908	65	88	01.87-03.91	■	
60-11 (8040.25.230 R)		Diesel		3908	74	101	01.87-03.91	■	
65-12 (8040.25.200)		Diesel		3908	85	116	01.87-03.91	■	
79-12 (8040.25.200)		Diesel		3908	85	116	01.87-03.91	■	
79-12 (8040.25.220)		Diesel		3908	85	116	01.87-03.91	■	
79-12 (8040.25.200)		Diesel		3908	85	116	01.87-03.91	■	
79-12 (8040.25.220)		Diesel		3908	85	116	01.87-03.91	■	
50-10 (8340.04.200)		Diesel		4570	74	101	01.79-12.86	■	■
50-10 (8340.04.250)		Diesel		4570	74	101	01.79-12.86	■	■
50-10 (8340.04.300)		Diesel		4570	74	101	01.79-12.86	■	■
50-10 (8340.04.362)		Diesel		4570	74	101	01.79-12.86	■	■
60-10 (8340.04.200)		Diesel		4570	74	101	11.79-12.86	■	■
60-10 (8340.04.250)		Diesel		4570	74	101	11.79-12.86	■	■
65-10 (8340.04.200)		Diesel		4570	74	101	11.79-01.87	■	■
65-10 (8340.04.250)		Diesel		4570	74	101	11.79-01.87	■	■
65-10 (8340.04.300)		Diesel		4570	74	101	11.79-01.87	■	■
65-10 (8340.04.350)		Diesel		4570	74	101	11.79-01.87	■	■
79-13 (8060.04.060)		Diesel		5500	96	131	11.79-12.83	■	■
79-13 (8060.04.660)		Diesel		5500	96	131	11.79-12.83	■	■
109-14 (8060.04.689)		Diesel		5500	99	135	06.83-12.85	■	■
95-14 (8060.04.669)		Diesel		5500	99	135	07.83-10.85	■	■
109-14 (8060.05.289)		Diesel		5861	101	137	11.85-03.91	■	
79-14 (8060.05.280)	01/87-	Diesel		5861	101	137	12.85-03.91	■	
79-14 (8060.05.280)	01/87-	Diesel		5861	101	137	12.85-03.91	■	
95-14 (8060.04.669)		Diesel		5861	101	137	11.85-03.91	■	