

# LISTA DE APLICACIONES - BUYERS GUIDE

## 151080

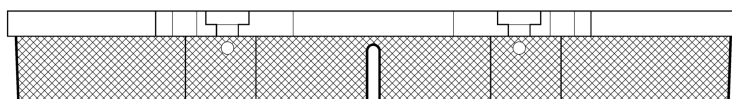
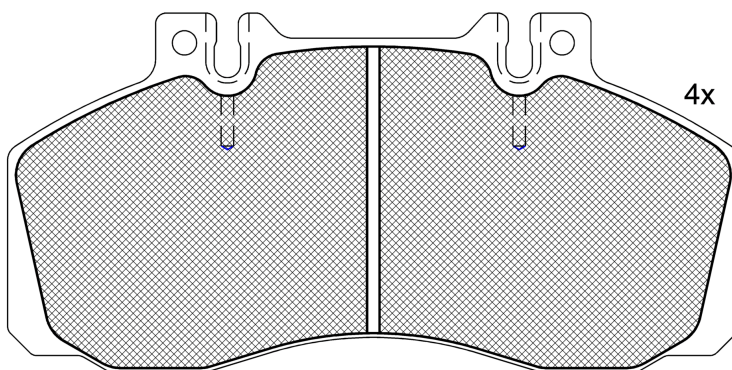


8 424073 086167

Qty: 660

Weight: 3.800

O.E.M.	MAKE
190 6298	IVECO
190 6999	IVECO
5001 014 694	RENAULT TRUCKS
717 3036	IVECO



## 151080



**90R-01178/689**



Lucas-Girling B2x60

174.8x85.6x22

**WVA**

29065

**MAKE**

IVECO

RENAULT TRUCKS



Trac.	CC	Kw	CV
-------	----	----	----



Front / Rear

### IVECO

#### EuroCargo I-III 01.91-09.15

#### Dump Truck

65 E 10 K (8040.25B.4200)		Diesel		3908	75	102	01.91-09.15	■	■
65 E 12 K (8040.25X.4000)	-12/96	Diesel		3908	85	116	01.91-09.15	■	■
75 E 12 K (8040.25X.4000)		Diesel		3908	85	116	01.91-09.15	■	■
60 E 14 K (8040.45.4000)		Diesel		3908	100	136	01.91-09.15	■	■
65 E 14 K (8040.45.4000)	-12/96	Diesel		3908	100	136	01.91-09.15	■	■
75 E 14 K (8040.45.4000)		Diesel		3908	100	136	01.91-09.15	■	■
75 E 14 K (8040.45.4180)		Diesel		3908	100	136	01.91-09.15	■	■
75 E 15 K (8060.25R.4200 LTC)	-12/96	Diesel		5861	105	143	01.91-09.15	■	■

#### EuroCargo I-III 01.91-09.15

#### Platform/Chassis

60 E 10 (8040.25B.4200)		Diesel		3908	75	102	01.91-09.15	■	■
65 E 10 (8040.25B.4200)		Diesel		3908	75	102	01.91-09.15	■	■
60 E 12 (8040.25X.4000)		Diesel		3908	85	116	01.91-09.15	■	■
65 E 12, 65 E 12 P (8040.25X.4000)	-12/96	Diesel		3908	85	116	01.91-09.15	■	■
75 E 12, 75 E 12 P (8040.25X.4000)	-12/96	Diesel		3908	85	116	01.91-09.15	■	■
60 E 14, 60 E 14 P (8040.45.4000)		Diesel		3908	100	136	01.91-09.15	■	■
65 E 14, 65 E 14 P (8040.45.4000)	-12/96	Diesel		3908	100	136	01.91-09.15	■	■
75 E 14, 75 E 14 P (8040.45.4000)	-12/96	Diesel		3908	100	136	01.91-09.15	■	■
75 E 14, 75 E 14 P (8040.45.4180)	-12/96	Diesel		3908	100	136	01.91-09.15	■	■
80 E 18 tector, 80 E 18 P tector, 80 E 18 FP tector (F4AE3481B)		Diesel		3922	130	177	09.06-09.15	■	■
80 EL 18 tector, 80 EL 18 P tector (F4AE3481B)		Diesel		3922	130	177	09.06-09.15	■	■
75 E 15, 75 E 15 P, 80 E 15 (8060.25R.4200 LTC)	-12/96	Diesel		5861	105	143	01.91-09.15	■	■

# LISTA DE APLICACIONES - BUYERS GUIDE

95 E 15 W (8060.25R.4750)	-12/96	Diesel		5861	105	143	01.91-09.15	■	■
95 E 15 W (8060.25R.4755)	-12/96	Diesel		5861	105	143	01.91-09.15	■	■
95 E 15 W (8060.25R.4760)	-12/96	Diesel		5861	105	143	01.91-09.15	■	■
95 E 15 W (8060.25R.4764)	-12/96	Diesel		5861	105	143	01.91-09.15	■	■
95 E 15 W (8060.45R.5050)	-12/96	Diesel		5861	105	143	01.91-09.15	■	■
95 E 15 W (8060.45R.5051)	-12/96	Diesel		5861	105	143	01.91-09.15	■	■
95 E 21 W (8060.45.4700)	-12/96	Diesel		5861	152	207	01.91-09.15	■	■
95 E 21 W (8060.45.4702)	-12/96	Diesel		5861	152	207	01.91-09.15	■	■
95 E 21 W (8060.45.4704)	-12/96	Diesel		5861	152	207	01.91-09.15	■	■
95 E 21 W (8060.45.4706)	-12/96	Diesel		5861	152	207	01.91-09.15	■	■
95 E 21 W (8060.45.4708)	-12/96	Diesel		5861	152	207	01.91-09.15	■	■
95 E 21 W (8060.45.5250)	-12/96	Diesel		5861	152	207	01.91-09.15	■	■
95 E 21 W (8060.45.5251)	-12/96	Diesel		5861	152	207	01.91-09.15	■	■
95 E 21 W (8060.45.5255)	-12/96	Diesel		5861	152	207	01.91-09.15	■	■
<b>RENAULT TRUCKS</b>									
<b>Midliner 10.82-01.00</b>						<b>Dump Truck</b>			
S 120.06/A,S 120.07/A (T 4.40)		Diesel		3990	82	112	09.90-11.92	■	
S 120.07/A (T 4.40)		Diesel		3990	82	112	09.90-11.92	■	
<b>Midliner 10.82-01.00</b>						<b>Platform/Chassis</b>			
S 120.06/A (T 4.40)		Diesel		3990	82	112	09.90-11.92	■	
S 120.07/A (T 4.40)		Diesel		3990	82	112	09.90-11.92	■	
S 120.07/A (T 4.40)		Diesel		3990	82	112	09.90-11.92	■	
S 120.06/A,S 120.07/A (T 4.40 A/3)		Diesel		3990	88	120	11.92-10.94	■	
S 120.06/A,S 120.07/A (T 4.40 CC)		Diesel		3990	88	120	11.92-10.94	■	
S 120.07/A (T 4.40 A/3)		Diesel		3990	88	120	11.92-10.94	■	
S 120.07/A (T 4.40 CC)		Diesel		3990	88	120	11.92-10.94	■	
S 120.08/A (T 4.40 A/3)		Diesel		3990	88	120	11.92-10.94	■	■
S 120.08/A (T 4.40 CC)		Diesel		3990	88	120	11.92-10.94	■	■
S 140.07/A (MIDS 06.02.12 C)		Diesel		5490	103	140	01.90-09.93	■	■
S 140.07/A (MIDS 06.02.12 C)		Diesel		5490	103	140	01.90-09.93	■	■