

LISTA DE APLICACIONES - BUYERS GUIDE

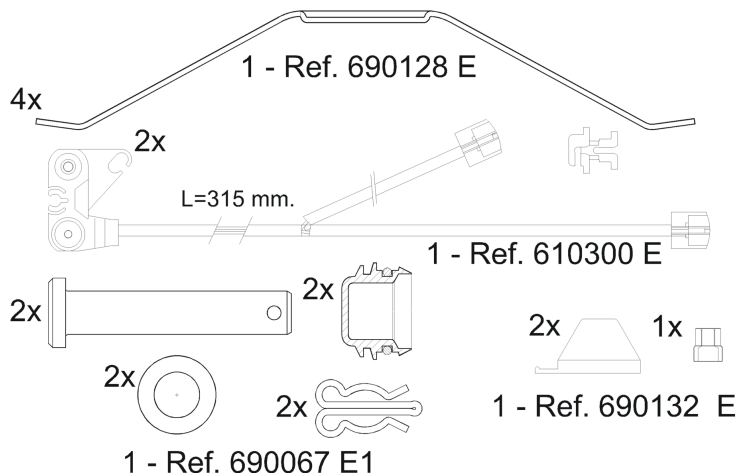
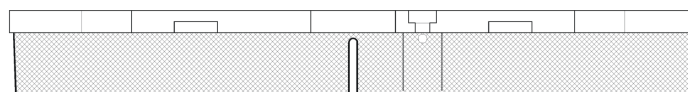
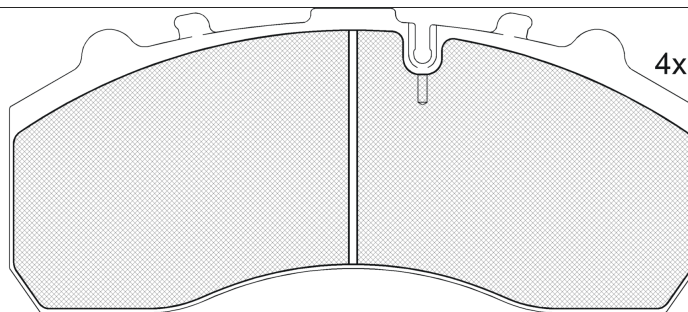
151194-117



Qty: 660

Weight: 11.160

O.E.M.	MAKE
190 6439	IVECO
299 2348	IVECO
299 2476	IVECO
299 5819	IVECO
299 5938	IVECO



151194-117



E 90R-01178/637

Knorr SB7000

247.5x109.6x30

WVA	FMSI
29087	D1203-8323
29105	
29106	
29108	
29109	
MAKE	
IVECO	



Trac.	CC	Kw	CV		
					Front / Rear

IVECO

EuroCargo I-III 01.91-09.15

Dump Truck

170 E 15 K (8060.25R.4280)	Diesel	5861	105	143	12.91-07.00	■	
180 E 24 K tector (F4AE0681B)	Diesel	5883	176	240	09.00-09.15	■	■
180 E 28 K tector (F4AE0681A)	Diesel	5883	202	275	09.00-09.15	■	■
180 E 28 K tector (F4AE3681E)	Diesel	5883	202	275	09.00-09.15	■	■

EuroCargo I-III 01.91-09.15

Platform/Chassis

180 E 21 tector (F4AE0681C)	Diesel	5883	154	209	09.00-09.15	■	■
180 E 21 tector (F4AE0681D)	Diesel	5883	154	209	09.00-09.15	■	■
180 E 24, 180 E 25 tector (F4AE0681B)	Diesel	5883	176	240	09.00-09.15	■	■
180 E 24, 180 E 25 tector (F4AE3681D)	Diesel	5883	176	240	09.00-09.15	■	■
180 E 28 tector, 180 E 28 P tector (F4AE0681A)	Diesel	5883	202	275	09.00-09.15	■	■
180 E 28 tector, 180 E 28 P tector (F4AE3681E)	Diesel	5883	202	275	09.00-09.15	■	■

EuroCargo I-III 01.91-09.15

Truck Tractor

320 E 28 T tector (F4AE0681A)	Diesel	5883	202	275	09.00-09.15	■	■
-------------------------------	--------	------	-----	-----	-------------	---	---

EuroRider 01.92-

391.12.35	01/96-	Diesel	11995		01.92-	■	■
-----------	--------	--------	-------	--	--------	---	---

EuroStar 01.93-10.02

Platform/Chassis

LD 190 E 38 P (8460.41L TCA)	ch. 4196457 a. C044258	Diesel	9498	276	375	01.93-02.02	■	■
LD 240 E 38 (8460.41L.5020)	ch. 4196457 a. C044258	Diesel	9498	276	375	01.93-02.02	■	
LD 240 E 38		Diesel	9498	276	375	01.93-02.02	■	
LD 260 E 38 P (8460.41L TCA)	ch. 4196457 a. C044258	Diesel	9498	276	375	01.93-02.02	■	■
LD 190 E 39 P, LD 190 E 39 FP (F3AE0681E)	ch. 4196457 a. C044258	Diesel	10308	287	390	11.99-02.02	■	■

LISTA DE APLICACIONES - BUYERS GUIDE

LD 260 E 39 P, LD 260 E 39 FP (F3AE0681E)	ch. 4196457 a. C044258	Diesel		10308	287	390	11.99-02.02	■	
LD 190 E 40 (F3AE0681B)	ch. 4196457 a. C044258	Diesel		10308	294	400	09.00-02.02	■	■
LD 260 E 40 (F3AE0681B)	ch. 4196457 a. C044258	Diesel		10308	294	400	09.00-02.02	■	
LD 260 E 40		Diesel		10308	294	400	09.00-02.02	■	
LD 190 E 43, LD 190 E 43 P, LD 190 E 43 FP (F3AE0681D)	ch. 4196457 a. C044258	Diesel		10308	316	430	11.99-02.02	■	■
LD 260 E 43 Y/PS, LD 260 E 43 FP (F3AE0681D)	ch. 4196457 a. C044258	Diesel		10308	316	430	01.93-02.02	■	■
LD 260 E 43 Y/PS, LD 260 E 43 FP		Diesel		10308	316	430	01.93-02.02	■	
LD 260 E 48 Y/PS (F3BE0681E)	ch. 4196457 a. C044258	Diesel		12882	353	480	01.93-02.02	■	
LD 190 E 42, LD 190 E 42 P (8210.42L(TCA))	ch. 4196457 a. C044258	Diesel		13798	309	420	01.93-02.02	■	■
LD 190 E 42, LD 190 E 42 P (8210.42L.400)	ch. 4196457 a. C044258	Diesel		13798	309	420	01.93-02.02	■	■
LD 240 E 42 FS, LD 240 E 42 PS (8210.42L(TCA))	ch. 4196457 a. C044258	Diesel		13798	309	420	01.93-02.02	■	
LD 240 E 42 FS, LD 240 E 42 PS (8210.42L.400)	ch. 4196457 a. C044258	Diesel		13798	309	420	01.93-02.02	■	
LD 240 E 42 FS, LD 240 E 42 PS		Diesel		13798	309	420	01.93-02.02	■	
LD 260 E 42 P (8210.42L.)	ch. 4196457 a. C044258	Diesel		13798	309	420	01.93-02.02	■	■
LD 190 E 47 (8210.42M. TCA)	ch. 4196457 a. C044258	Diesel		13798	345	469	01.93-02.02	■	■
LD 240 E 47 PS (8210.42M. TCA)	ch. 4196457 a. C044258	Diesel		13798	345	469	01.93-02.02	■	
LD 240 E 47 PS		Diesel		13798	345	469	01.93-02.02	■	
LD 260 E 47 (8210.42M. TCA)	ch. 4196457 a. C044258	Diesel		13798	345	469	01.93-02.02	■	■
LD 190 E 52 (8280.42S. TCA)	ch. 4196457 a. C044258	Diesel		17173	378	514	01.93-02.02	■	
LD 240 E 52 PS (8280.42S. TCA)	ch. 4196457 a. C044258	Diesel		17173	378	514	01.93-02.02	■	
LD 240 E 52 PS		Diesel		17173	378	514	01.93-02.02	■	
LD 260 E 52 (8280.42S. TCA)	ch. 4196457 a. C044258	Diesel		17173	378	514	01.93-02.02	■	■
EuroStar 01.93-10.02					Truck Tractor				
LD 400 E 38 TX/P, LD 440 E 38 TX/P (8460.41L TCA)	ch. 4196457 a. C044258	Diesel		9498	276	375	01.93-02.02	■	
LD 400 E 38 TX/P, LD 440 E 38 TX/P (8460.41L.5020)	ch. 4196457 a. C044258	Diesel		9498	276	375	01.93-02.02	■	
LD 400 E 38 TX/P, LD 440 E 38 TX/P (8460.41N)	ch. 4196457 a. C044258	Diesel		9498	276	375	01.93-02.02	■	
LD 440 E 38 T (8460.41L TCA)	ch. 4196457 a. C044258	Diesel		9498	276	375	01.93-02.02	■	■
LD 440 E 38 T (8460.41N)	ch. 4196457 a. C044258	Diesel		9498	276	375	01.93-02.02	■	■
LD 440 E 38 TZ (8460.41L TCA)	ch. 4196457 a. C044258	Diesel		9498	276	375	01.93-02.02	■	■
LD 440 E 38 TZ (8460.41N)	ch. 4196457 a. C044258	Diesel		9498	276	375	01.93-02.02	■	■
LD 440 E 39 T, LD 440 E 39 T/P (F3AE0681E)	ch. 4196457 a. C044258	Diesel		10308	287	390	11.99-02.02	■	■
LD 440 E 39 TX, LD 440 E 39 TX/P (F3AE0681E)	ch. 4196457 a. C044258	Diesel		10308	287	390	11.99-10.02	■	
LD 440 E 40 T (F3AE0681B)	ch. 4196457 a. C044258	Diesel		10308	294	400	09.00-02.02	■	■
LD 440 E 40 TX/P (F3AE0681B)	ch. 4196457 a. C044258	Diesel		10308	294	400	01.01-02.02	■	■
LD 440 E 43 T/P (F3AE0681D)	ch. 4196457 a. C044258	Diesel		10308	316	430	01.93-02.02	■	■
LD 440 E 43 TX/P (F3AE0681D)	ch. 4196457 a. C044258	Diesel		10308	316	430	11.99-02.02	■	■
LD 440 E 48 T/P (F3BE0681E)	ch. 4196457 a. C044258	Diesel		12882	353	480	01.01-02.02	■	■
LD 400 E 42 TX/P, LD 440 E 42 TX/P (8210.42L.)	ch. 4196457 a. C044258	Diesel		13798	309	420	01.93-02.02	■	
LD 440 E 42 T/P (8210.42L(TCA))	ch. 4196457 a. C044258	Diesel		13798	309	420	01.93-02.02	■	■
LD 440 E 42 T/P (8210.42L.)	ch. 4196457 a. C044258	Diesel		13798	309	420	01.93-02.02	■	■
LD 440 E 42 TZ (8210.42L.)	ch. 4196457 a. C044258	Diesel		13798	309	420	01.93-02.02	■	■
LD 440 E 47 T/P (8210.42M. TCA)	ch. 4196457 a. C044258	Diesel		13798	345	469	01.93-02.02	■	■
LD 440 E 47 TZ (8210.42M. TCA)	ch. 4196457 a. C044258	Diesel		13798	345	469	01.93-02.02	■	■
LD 440 E 52 T (8280.42S. TCA)	ch. 4196457 a. C044258	Diesel		17173	378	514	01.93-02.02	■	■
LD 440 E 52 TZ (8280.42S. TCA)	ch. 4196457 a. C044258	Diesel		17173	378	514	01.93-02.02	■	■

LISTA DE APLICACIONES - BUYERS GUIDE

EuroTech MH 01.98-					Dump Truck				
190 E 24 K (F2BE0681D)	-03/02, ch. 4196457 a. C044258	Diesel		7790	180	245	09.98-	■	■
190 E 27 K (F2BE0681C)	-03/02, ch. 4196457 a. C044258	Diesel		7790	200	272	09.98-	■	■
190 E 27 K (F2BE0681F)	-03/02, ch. 4196457 a. C044258	Diesel		7790	200	272	09.98-	■	■
190 E 31 K (F2BE0681B)	-03/02, ch. 4196457 a. C044258	Diesel		7790	228	310	09.98-	■	■
EuroTech MH 01.98-					Platform/Chassis				
190 E 24, 190 E 24 /P (F2BE0681D)	-03/02, ch. 4196457 a. C044258	Diesel		7790	180	245	09.98-	■	■
260 E 24 Y/P, 260 E 24 Y/PS, 260 E 24 Y/PT (F2BE0681D)	-03/02, ch. 4196457 a. C044258	Diesel		7790	180	245	11.99-	■	■
260 E 24 Y/P, 260 E 24 Y/PS, 260 E 24 Y/PT		Diesel		7790	180	245	11.99-	■	
190 E 27, 190 E 27 /P (F2BE0681C)	-03/02, ch. 4196457 a. C044258	Diesel		7790	200	272	09.98-	■	■
190 E 27, 190 E 27 /P (F2BE0681F)	-03/02, ch. 4196457 a. C044258	Diesel		7790	200	272	09.98-	■	■
260 E 27 Y/P, 260 E 27 Y/PS, 260 E 27 RY/PS, 260 E 27 RY/PT (F2BE0681C)	-03/02, ch. 4196457 a. C044258	Diesel		7790	200	272	11.99-	■	■
260 E 27 Y/P, 260 E 27 Y/PS, 260 E 27 RY/PS, 260 E 27 RY/PT (F2BE0681F)	-03/02, ch. 4196457 a. C044258	Diesel		7790	200	272	11.99-	■	■
260 E 27 Y/P, 260 E 27 Y/PS, 260 E 27 RY/PS, 260 E 27 RY/PT		Diesel		7790	200	272	11.99-	■	
190 E 30, 190 E 30 /P (F2BE0681E)	-03/02, ch. 4196457 a. C044258	Diesel		7790	218	296	01.00-	■	
260 E 30 Y/PS (F2BE0681E)	-03/02, ch. 4196457 a. C044258	Diesel		7790	218	296	01.00-	■	
260 E 30 Y/PS		Diesel		7790	218	296	01.00-	■	
190 E 31, 190 E 31 /P (F2BE0681B)	-03/02, ch. 4196457 a. C044258	Diesel		7790	228	310	09.98-	■	■
260 E 31 Y/P, 260 E 31 Y/PS, 260 E 31 Y/PT (F2BE0681B)	-03/02, ch. 4196457 a. C044258	Diesel		7790	228	310	11.99-	■	■
260 E 31 Y/P, 260 E 31 Y/PS, 260 E 31 Y/PT		Diesel		7790	228	310	11.99-	■	
190 E 35, 190 E 35 /P, 190 E 35 /FP (F2BE0681A)	-03/02, ch. 4196457 a. C044258	Diesel		7790	259	352	09.98-	■	■
260 E 35 Y/P, 260 E 35 Y/PT, 260 E 35 Y/TN (F2BE0681A)	-03/02, ch. 4196457 a. C044258	Diesel		7790	259	352	11.99-	■	■
260 E 35 Y/P, 260 E 35 Y/PT, 260 E 35 Y/TN		Diesel		7790	259	352	11.99-	■	
EuroTech MH 01.98-					Truck Tractor				
400 E 31 TP, 440 E 31 T, 440 E 31 TP (F2BE0681B)	-03/02, ch. 4196457 a. C044258	Diesel		7790	228	310	09.98-	■	■
400 E 35 TP, 440 E 35 T, 440 E 35 T/P, 440 E 35 T/FP (F2BE0681A)	-03/02, ch. 4196457 a. C044258	Diesel		7790	259	352	09.98-	■	■
440 E 35 TX/P (F2BE0681A)	-03/02, ch. 4196457 a. C044258	Diesel		7790	259	352	02.00-	■	
EuroTech MP 01.92-					Platform/Chassis				
240 E 30 PS (8460.41C. TCA)	-03/02, ch. 4196457 a. C044258	Diesel		9498	221	301	01.97-	■	
180 E 34 (8460.41K.406)	ch. 4196457 a. C044258	Diesel		9498	254	345	01.92-12.93	■	
190 E 34 (8460.41K.406)	-03/02, ch. 4196457 a. C044258	Diesel		9498	254	345	01.93-	■	
240 E 34 (8460.41K. TCA)	ch. 4196457 a. C044258	Diesel		9498	254	345	09.95-12.96	■	
180 E 38 (8460.41L.5020)	ch. 4196457 a. C044258	Diesel		9498	276	375	01.92-12.93	■	
190 E 38 (8460.41L TCA)	-03/02, ch. 4196457 a. C044258	Diesel		9498	276	375	01.93-	■	
240 E 38 (8460.41L.5020)	-03/02, ch. 4196457 a. C044258	Diesel		9498	276	375	01.92-	■	
240 E 38		Diesel		9498	276	375	01.92-	■	
260 E 38 P (8460.41N)	-03/02, ch. 4196457 a. C044258	Diesel		9498	276	375	01.94-	■	
190 E 39, 190 E 39 /P, 190 E39 /FP (F3AE0681E)	-03/02, ch. 4196457 a. C044258	Diesel		10308	287	390	11.99-	■	

LISTA DE APLICACIONES - BUYERS GUIDE

260 E 39 Y, 260 E 39 Y/P, 260 E 39 Y/FP, 260 E 39 Y/FS (F3AE0681E)	-03/02, ch. 4196457 a. C044258	Diesel		10308	287	390	11.99-	■
190 E 40 /P (F3AE0681B)	-03/02, ch. 4196457 a. C044258	Diesel		10308	294	400	01.01-	■
260 E 40 (F3AE0681B)	-03/02, ch. 4196457 a. C044258	Diesel		10308	294	400	01.01-	■
260 E 40		Diesel		10308	294	400	01.01-	■
190 E 43, 190 E 43 /P (F3AE0681D)	-03/02, ch. 4196457 a. C044258	Diesel		10308	316	430	01.01-	■
260 E 43 Y, 260 E 43 Y/P (F3AE0681D)	-03/02, ch. 4196457 a. C044258	Diesel		10308	316	430	11.99-	■
180 E 42 (8210.42L.400)	ch. 4196457 a. C044258	Diesel		13798	309	420	01.92-12.93	■
190 E 42, 190 E 42 /P (8210.42L.400)	ch. 4196457 a. C044258	Diesel		13798	309	420	01.93-	■
240 E 42 (8210.42L.400)	-03/02, ch. 4196457 a. C044258	Diesel		13798	309	420	01.92-	■
240 E 42		Diesel		13798	309	420	01.92-	■
260 E 42 (8210.42L.400)	-03/02, ch. 4196457 a. C044258	Diesel		13798	309	420	01.94-	■
EuroTech MP 01.92-					Truck Tractor			
400 E 34 T, 440 E 34 T (8460.41K.406)	-03/02, ch. 4196457 a. C044258	Diesel		9498	254	345	01.92-	■
400 E 38 T, 440 E 38 T, 440 E 38 T /P (8460.41L.5020)	-03/02, ch. 4196457 a. C044258	Diesel		9498	276	375	01.92-	■
400 E 38 T, 440 E 38 T, 440 E 38 T /P (8460.41N)	-03/02, ch. 4196457 a. C044258	Diesel		9498	276	375	01.92-	■
400 E 38 TXP (8460.41L.5020)	ch. 4196457 a. C044258	Diesel		9498	276	375	11.93-12.96	■
400 E 38 TXP (8460.41N)	ch. 4196457 a. C044258	Diesel		9498	276	375	11.93-12.96	■
440 E 38 TZ (8460.41L TCA)	-03/02, ch. 4196457 a. C044258	Diesel		9498	276	375	01.93-	■ ■
440 E 39 T, 440 E 39 T/P, 440 E 39 T/FP-CT (F3AE0681E)	-03/02, ch. 4196457 a. C044258	Diesel		10308	287	390	11.99-	■
440 E 39 TX/P (F3AE0681E)	-03/02, ch. 4196457 a. C044258	Diesel		10308	287	390	11.99-	■
440 E 40 T/P (F3AE0681B)	-03/02, ch. 4196457 a. C044258	Diesel		10308	294	400	09.00-	■
440 E 40 TX/P (F3AE0681B)	-03/02, ch. 4196457 a. C044258	Diesel		10308	294	400	01.01-	■
440 E 43 T, 440 E 43 T/P (F3AE0681D)	-03/02, ch. 4196457 a. C044258	Diesel		10308	316	430	11.99-	■
440 E 43 TX/P (F3AE0681D)	-03/02, ch. 4196457 a. C044258	Diesel		10308	316	430	11.99-	■
400 E 42 T, 440 E 42 T, 440 E 42 T/P (8210.42L(TCA))	-03/02, ch. 4196457 a. C044258	Diesel		13798	309	420	01.92-	■
400 E 42 T, 440 E 42 T, 440 E 42 T/P (8210.42L.400)	-03/02, ch. 4196457 a. C044258	Diesel		13798	309	420	01.92-	■
440 E 42 TZ (8210.42L.400)	-03/02, ch. 4196457 a. C044258	Diesel		13798	309	420	01.93-	■ ■
EuroTech MT 01.92-08.98					Dump Truck			
180 E 24 K (8360.46R.416 TCA)	ch. 4196457 a. C044258	Diesel		7685	176	239	01.93-12.96	■ ■
190 E 24 K (8360.46R.416 TCA)	ch. 4196457 a. C044258	Diesel		7685	176	239	01.97-08.98	■ ■
180 E 27 K (8360.46.417 TCA)	ch. 4196457 a. C044258	Diesel		7685	196	267	01.92-12.96	■ ■
190 E 27 K (8360.46.417 TCA)	ch. 4196457 a. C044258	Diesel		7685	196	267	01.97-08.98	■ ■
190 E 30 K (8460.41C.320)	ch. 4196457 a. C044258	Diesel		9498	221	301	01.97-08.98	■ ■
EuroTech MT 01.92-08.98					Platform/Chassis			
180 E 24 (8360.46R.416 TCA)	ch. 4196457 a. C044258	Diesel		7685	176	239	01.92-12.96	■ ■
190 E 24 (8360.46R.416 TCA)	ch. 4196457 a. C044258	Diesel		7685	176	239	01.97-08.98	■ ■
180 E 27 (8360.46.417 TCA)	ch. 4196457 a. C044258	Diesel		7685	196	267	01.92-12.96	■ ■
190 E 27 (8360.46.417 TCA)	ch. 4196457 a. C044258	Diesel		7685	196	267	01.97-08.98	■ ■
180 E 30 R (8460.41C.320)	ch. 4196457 a. C044258	Diesel		9498	221	301	01.92-12.96	■ ■
190 E 30 (8460.41C.320)	ch. 4196457 a. C044258	Diesel		9498	221	301	01.97-08.98	■ ■
180 E 34 R (8460.41K.406)	ch. 4196457 a. C044258	Diesel		9498	254	345	01.92-12.93	■ ■

LISTA DE APLICACIONES - BUYERS GUIDE

EuroTech MT 01.92-08.98					Truck Tractor				
400 E 30 T (8460.41C.320)	ch. 4196457 a. C044258	Diesel		9498	221	301	01.92-08.98	■	■
400 E 34 T (8460.41K.406)	ch. 4196457 a. C044258	Diesel		9498	254	345	01.92-08.98	■	■
EuroTrakker 01.93-12.06					Concrete Mixer				
MP 260 E 31 HB Cursor (F2BE0681B)	01/01-	Diesel		7790	228	310	11.99-11.04	■	■
MP 340 E 35 HB Cursor (F2BE0681A)		Diesel		7790	259	352	01.01-11.04	■	■
MP 340 E 38 HB Cursor (F3BE0681G)		Diesel		12882	280	380	01.01-11.04	■	■
MP 340 E 44 HB Cursor (F3BE0681C)		Diesel		12882	324	440	01.01-11.04	■	■
EuroTrakker 01.93-12.06					Dump Truck				
MP 190 E 31 H Cursor (F2BE0681B)		Diesel		7790	228	310	09.99-11.04	■	■
MP 190 E 31 W Cursor (F2BE0681B)		Diesel		7790	228	310	09.99-11.04	■	■
MP 260 E 31 H Cursor (F2BE0681B)		Diesel		7790	228	310	09.99-11.04	■	■
MP 190 E 35 H Cursor (F2BE0681A)		Diesel		7790	259	352	09.99-11.04	■	■
MP 190 E 35 W Cursor (F2BE0681A)		Diesel		7790	259	352	09.99-11.04	■	■
MP 260 E 35 H Cursor (F2BE0681A)		Diesel		7790	259	352	01.00-11.04	■	■
MP 260 E 35 W Cursor (F2BE0681A)		Diesel		7790	259	352	09.99-11.04	■	■
MP 340 E 35 H Cursor (F2BE0681A)		Diesel		7790	259	352	09.99-11.04	■	■
MP 190 E 30 H (8460.41C.)		Diesel		9498	221	301	01.93-11.04	■	■
MP 190 E 30 W (8460.41C.)		Diesel		9498	221	301	01.93-11.04	■	■
MP 260 E 30 H (8460.41C.)		Diesel		9498	221	301	01.93-11.04	■	■
MP 190 E 34 H (8460.41K.)		Diesel		9498	254	345	01.93-11.04	■	■
MP 190 E 34 W (8460.41K.)		Diesel		9498	254	345	01.93-11.04	■	■
MP 260 E 34 H (8460.41K.)		Diesel		9498	254	345	01.93-11.04	■	■
MP 260 E 34 W (8460.41K.)		Diesel		9498	254	345	01.93-11.04	■	■
MP 340 E 34 H (8460.41K.)	01/94-	Diesel		9498	254	345	01.93-11.04	■	■
MP 380 E 34 H (8460.41K.)		Diesel		9498	254	345	01.93-11.04	■	■
MP 190 E 38 W Cursor (F3BE0681G)		Diesel		12882	280	380	01.01-11.04	■	■
MP 260 E 38 H Cursor (F3BE0681G)		Diesel		12882	280	380	01.01-11.04	■	■
MP 260 E 38 W Cursor (F3BE0681G)		Diesel		12882	280	380	01.01-11.04	■	■
MP 340 E 38 H Cursor (F3BE0681G)		Diesel		12882	280	380	01.01-11.04	■	■
MP 380 E 38 H Cursor (F3BE0681G)		Diesel		12882	280	380	01.01-11.04	■	■
MP 380 E 38 W Cursor (F3BE0681G)		Diesel		12882	280	380	01.01-11.04	■	■
MP 410 E 38 H Cursor (F3BE0681G)		Diesel		12882	280	380	01.01-11.04	■	■
MP 190 E 44 W Cursor (F3BE0681C)		Diesel		12882	324	440	09.00-11.04	■	■
MP 260 E 44 H Cursor (F3BE0681C)		Diesel		12882	324	440	01.01-11.04	■	■
MP 260 E 44 W Cursor (F3BE0681C)		Diesel		12882	324	440	01.01-11.04	■	■
MP 340 E 44 H Cursor (F3BE0681C)		Diesel		12882	324	440	01.01-11.04	■	■
MP 380 E 44 H Cursor (F3BE0681C)		Diesel		12882	324	440	01.01-11.04	■	■
MP 380 E 44 W Cursor (F3BE0681C)		Diesel		12882	324	440	01.01-11.04	■	■
MP 410 E 44 H Cursor (F3BE0681C)		Diesel		12882	324	440	01.01-11.04	■	■
MP 190 E 37 H (8210.42K.)		Diesel		13798	272	370	01.93-11.04	■	■
MP 190 E 37 W (8210.42K.)		Diesel		13798	272	370	01.93-11.04	■	■
MP 260 E 37 H (8210.42K.)		Diesel		13798	272	370	01.93-11.04	■	■
MP 260 E 37 W (8210.42K.)		Diesel		13798	272	370	01.93-11.04	■	■
MP 340 E 37 H (8210.42K.)	01/94-	Diesel		13798	272	370	01.93-11.04	■	■
MP 380 E 37 H (8210.42K.)	01/94-	Diesel		13798	272	370	01.93-11.04	■	■
MP 380 E 37 W (8210.42K.)		Diesel		13798	272	370	01.93-11.04	■	■
MP 410 E 37 H (8210.42K.)	01/94-	Diesel		13798	272	370	01.93-11.04	■	■
MP 190 E 42 H (8210.42L.)		Diesel		13798	309	420	01.93-11.04	■	■
MP 190 E 42 W (8210.42L(TCA))		Diesel		13798	309	420	01.93-11.04	■	■

LISTA DE APLICACIONES - BUYERS GUIDE

MP 190 E 42 W (8210.42L.)		Diesel		13798	309	420	01.93-11.04	■	■
MP 260 E 42 H (8210.42L.)		Diesel		13798	309	420	01.93-11.04	■	■
MP 260 E 42 W (8210.42L(TCA))		Diesel		13798	309	420	01.93-11.04	■	■
MP 260 E 42 W (8210.42L.)		Diesel		13798	309	420	01.93-11.04	■	■
MP 340 E 42 H (8210.42L.)	01/95-	Diesel		13798	309	420	01.93-11.04	■	■
MP 380 E 42 H (8210.42L.)		Diesel		13798	309	420	01.93-11.04	■	■
MP 380 E 42 W (8210.42L.)		Diesel		13798	309	420	01.93-11.04	■	■
MP 410 E 42 H (8210.42L.)	01/94-	Diesel		13798	309	420	01.93-11.04	■	■
EuroTrakker 01.93-12.06					Platform/Chassis				
MP 190 E 31 H Cursor (F2BE0681B)		Diesel		7790	228	310	09.99-11.04	■	■
MP 190 E 31 W Cursor (F2BE0681B)		Diesel		7790	228	310	09.99-11.04	■	■
MP 260 E 31 H Cursor (F2BE0681B)		Diesel		7790	228	310	09.99-11.04	■	■
MP 190 E 35 H Cursor (F2BE0681A)		Diesel		7790	259	352	09.99-11.04	■	■
MP 190 E 35 W Cursor (F2BE0681A)		Diesel		7790	259	352	09.99-11.04	■	■
MP 260 E 35 H Cursor (F2BE0681A)		Diesel		7790	259	352	01.00-11.04	■	■
MP 260 E 35 W Cursor (F2BE0681A)		Diesel		7790	259	352	09.99-11.04	■	■
MP 340 E 35 H Cursor (F2BE0681A)		Diesel		7790	259	352	09.99-11.04	■	■
MP 190 E 38 W Cursor (F3BE0681G)		Diesel		12882	280	380	01.01-11.04	■	■
MP 260 E 38 H Cursor (F3BE0681G)		Diesel		12882	280	380	01.01-11.04	■	■
MP 260 E 38 W Cursor (F3BE0681G)		Diesel		12882	280	380	01.01-11.04	■	■
MP 340 E 38 H Cursor (F3BE0681G)		Diesel		12882	280	380	01.01-11.04	■	■
MP 380 E 38 H Cursor (F3BE0681G)		Diesel		12882	280	380	01.01-11.04	■	■
MP 380 E 38 W Cursor (F3BE0681G)		Diesel		12882	280	380	01.01-11.04	■	■
MP 410 E 38 H Cursor (F3BE0681G)		Diesel		12882	280	380	01.01-11.04	■	■
MP 190 E 44 W Cursor (F3BE0681C)		Diesel		12882	324	440	09.00-11.04	■	■
MP 260 E 44 H Cursor (F3BE0681C)		Diesel		12882	324	440	01.00-11.04	■	■
MP 260 E 44 W Cursor (F3BE0681C)		Diesel		12882	324	440	01.01-11.04	■	■
MP 340 E 44 H Cursor (F3BE0681C)		Diesel		12882	324	440	01.01-11.04	■	■
MP 380 E 44 H Cursor (F3BE0681C)		Diesel		12882	324	440	01.01-11.04	■	■
MP 380 E 44 W Cursor (F3BE0681C)		Diesel		12882	324	440	01.01-11.04	■	■
MP 410 E 42 W (8210.42L(TCA))	01/97-	Diesel		13798	309	420	01.93-11.04	■	■
MP 410 E 42 W (8210.42L.)	01/97-	Diesel		13798	309	420	01.93-11.04	■	■
EuroTrakker 01.93-12.06					Truck Tractor				
MP 400 E 34 HT (8460.41K.)		Diesel		9498	254	345	01.93-11.04	■	■
MP 400 E 34 HT (8460.41K. TCA)		Diesel		9498	254	345	01.93-11.04	■	■
MP 440 E 34 HT (8460.41K.)	01/94-	Diesel		9498	254	345	01.93-11.04	■	■
MP 440 E 34 HT (8460.41K. TCA)	01/94-	Diesel		9498	254	345	01.93-11.04	■	■
MP 400 E 37 HT (8210.42K(TCA))		Diesel		13798	272	370	01.93-11.04	■	■
MP 400 E 37 HT (8210.42K.)		Diesel		13798	272	370	01.93-11.04	■	■
MP 400 E 37 WT (8210.42K(TCA))	01/97-	Diesel		13798	272	370	01.93-11.04	■	■
MP 400 E 37 WT (8210.42K.)	01/97-	Diesel		13798	272	370	01.93-11.04	■	■
MP 440 E 37 HT (8210.42K(TCA))		Diesel		13798	272	370	01.93-11.04	■	■
MP 440 E 37 HT (8210.42K.)		Diesel		13798	272	370	01.93-11.04	■	■
MP 720 E 37 HT (8210.42K(TCA))	01/94-	Diesel		13798	272	370	01.93-11.04	■	■
MP 720 E 37 HT (8210.42K.)	01/94-	Diesel		13798	272	370	01.93-11.04	■	■
MP 720 E 37 WT (8210.42K(TCA))	01/97-	Diesel		13798	272	370	01.93-11.04	■	■
MP 720 E 37 WT (8210.42K.)	01/97-	Diesel		13798	272	370	01.93-11.04	■	■
MP 400 E 42 HT (8210.42L(TCA))	01/95-	Diesel		13798	309	420	01.93-11.04	■	■
MP 400 E 42 HT (8210.42L.)	01/95-	Diesel		13798	309	420	01.93-11.04	■	■
MP 400 E 42 WT (8210.42L(TCA))	01/97-	Diesel		13798	309	420	01.93-11.04	■	■
MP 400 E 42 WT (8210.42L.)	01/97-	Diesel		13798	309	420	01.93-11.04	■	■

LISTA DE APLICACIONES - BUYERS GUIDE

MP 440 E 42 HT (8210.42L(TCA))	01/97-	Diesel		13798	309	420	01.93-11.04	■	■
MP 440 E 42 HT (8210.42L.)	01/97-	Diesel		13798	309	420	01.93-11.04	■	■
MP 720 E 42 HT (8210.42L(TCA))	01/94-	Diesel		13798	309	420	01.93-11.04	■	■
MP 720 E 42 HT (8210.42L.)	01/94-	Diesel		13798	309	420	01.93-11.04	■	■
MP 720 E 42 WT (8210.42L(TCA))	01/97-	Diesel		13798	309	420	01.93-11.04	■	■
MP 720 E 42 WT (8210.42L.)	01/97-	Diesel		13798	309	420	01.93-11.04	■	■
MP 720 E 47 HT (8210.42M. TCA)	01/98-	Diesel		13798	345	469	01.93-11.04	■	■
Stralis 02.02-					Municipal Vehicle				
AD 260S27, AT 260S27		Diesel		7790	200	272	04.04-	■	
AD 260S30, AT 260S30		Diesel		7790	218	296	04.04-	■	
AD 260S31, AT 260S31		Diesel		7790	228	310	04.04-	■	
AD 260S33, AT 260S33		Diesel		7790	243	330	06.07-	■	
AD 260S36, AT 260S36		Diesel		7790	265	360	07.07-	■	
Stralis 02.02-					Platform/Chassis				
AD 190S30, AD 190S31, AT 190S31 (F2BE0681B)		Diesel		7790	218	296	06.03-	■	■
AD 190S30, AD 190S31, AT 190S31 (F2BE0681E)		Diesel		7790	218	296	06.03-	■	■
AD 190S30, AD 190S31, AT 190S31 (F2BE3681C)		Diesel		7790	218	296	06.03-	■	■
AD 260S31, AT 260S31 (F2BE0681B)		Diesel		7790	228	310	06.03-	■	■
AD 260S31, AT 260S31 (F2BE3681C)		Diesel		7790	228	310	06.03-	■	■
AD 260S31, AT 260S31		Diesel		7790	228	310	06.03-	■	
AD 260S33, AT 260S33		Diesel		7790	243	330	12.06-	■	
AD 190S35, AT 190S35, AD 190S36, AT 190S36 (F2BE0681A)		Diesel		7790	259	352	06.03-	■	■
AD 190S35, AT 190S35, AD 190S36, AT 190S36 (F2BE3681A)		Diesel		7790	259	352	06.03-	■	■
AD 260S35, AT 260S35, AD 260S36, AT 260S36 (F2BE0681A)		Diesel		7790	259	352	06.03-	■	■
AD 260S35, AT 260S35, AD 260S36, AT 260S36 (F2BE3681A)		Diesel		7790	259	352	06.03-	■	■
AD 260S35, AT 260S35, AD 260S36, AT 260S36		Diesel		7790	259	352	06.03-	■	
AS 260S43 (F3AE0681D)		Diesel		10300	316	430	02.02-	■	■
AD 190S40, AT 190S40 (F3AE0681B)		Diesel		10308	294	400	03.03-	■	■
AD 190S40, AT 190S40 (F3AE0681H)		Diesel		10308	294	400	03.03-	■	■
AD 260S40, AT 260S40 (F3AE0681B)		Diesel		10308	294	400	06.03-	■	■
AD 260S40, AT 260S40 (F3AE0681H)		Diesel		10308	294	400	06.03-	■	■
AD 260S40, AT 260S40		Diesel		10308	294	400	06.03-	■	
AS 190S40 (F3AE0681B)	01/03-	Diesel		10308	294	400	02.02-	■	■
AS 190S40 (F3AE0681H)	01/03-	Diesel		10308	294	400	02.02-	■	■
AS 260S40 (F3AE0681B)		Diesel		10308	294	400	02.02-	■	■
AS 260S40 (F3AE0681H)		Diesel		10308	294	400	02.02-	■	■
AS 260S40		Diesel		10308	294	400	02.02-	■	
AD 260S42, AT 260S42 (F3AE3681B)		Diesel		10308	310	422	12.06-	■	
AD 260S42, AT 260S42, AS 260S42		Diesel		10308	310	422	05.07-	■	
AD 190S43, AT 190S43 (F3AE0681D)		Diesel		10308	316	430	06.03-	■	■
AD 260S43, AT 260S43 (F3AE0681D)		Diesel		10308	316	430	06.03-	■	■
AD 260S43, AT 260S43		Diesel		10308	316	430	06.03-	■	
AS 190S43 (F3AE0681D)	01/03-	Diesel		10308	316	430	02.02-	■	■
AS 260S43		Diesel		10308	316	430	02.02-	■	
AD 260S45, AT 260S45, AS 260S45		Diesel		10308	331	450	05.07-	■	
AS 260S48, AT260S48 (F3BE0681E)		Diesel		12880	353	480	02.02-	■	■
AS 190S48 (F3BE0681E)	01/03-	Diesel		12882	353	480	02.02-	■	■

LISTA DE APLICACIONES - BUYERS GUIDE

AS 260S48 (F3BE0681E)	01/03-	Diesel		12882	353	480	02.02-	■	■
AS 260S48		Diesel		12882	353	480	02.02-	■	
AS 260S54 (F3BE0681A)		Diesel		12882	397	540	02.02-	■	■
AS 260S54 (F3BE0681A)	01/03-	Diesel		12882	397	540	02.02-	■	■
Stralis 02.02-					Platform/Chassis				
AD 260S27 CNG, AT 260S27 CNG		Gasolina		7790	200	272	01.08-	■	
AD 260S30 CNG (F2GE0682A)		Gasolina		7790	220	299	01.13-	■	
Stralis 02.02-					Truck Tractor				
AD 440S35, AT 440S35, AD 440S36, AT 440S36 (F2BE0681A)		Diesel		7790	259	352	06.03-	■	■
AD 440S35, AT 440S35, AD 440S36, AT 440S36 (F2BE3681A)		Diesel		7790	259	352	06.03-	■	■
AD 440S40, AT 440S40 (F3AE0681B)		Diesel		10308	294	400	06.03-	■	■
AD 440S40, AT 440S40 (F3AE0681H)		Diesel		10308	294	400	06.03-	■	■
AD 440S40, AT 440S40 (F3AE0681B)		Diesel		10308	294	400	06.03-	■	■
AS 440S40 (F3AE0681B)		Diesel		10308	294	400	02.02-	■	■
AS 440S40 (F3AE0681H)		Diesel		10308	294	400	02.02-	■	■
AS 440S40 (F3AE0681B)		Diesel		10308	294	400	02.02-	■	■
AD 440S43, AT 440S43 (F3AE0681D)		Diesel		10308	316	430	06.03-	■	■
AD 440S43, AT 440S43 (F3AE0681D)		Diesel		10308	316	430	06.03-	■	■
AS 440S43 (F3AE0681D)		Diesel		10308	316	430	02.02-	■	■
AS 440S43 (F3AE0681D)		Diesel		10308	316	430	02.02-	■	■
AT 440S43 (F3AE0681D)		Diesel		10308	316	430	06.03-	■	■
AS 440S46		Diesel		10308	338	460	12.09-	■	
AS 440S54, ES 440S54 (F3BE0681A)	01/03-	Diesel		12880	397	540	02.02-	■	■
AS 440S48 (F3BE0681E)		Diesel		12882	353	480	02.02-	■	■
AS 440S48 (F3BE0681E)		Diesel		12882	353	480	02.02-	■	■
AS 440S48 (F3BE0681E)	01/03-	Diesel		12882	353	480	02.02-	■	■
AS 440S54 (F3BE0681A)		Diesel		12882	397	540	02.02-	■	■
AS 440S54 (F3BE0681A)	01/03-	Diesel		12882	397	540	02.02-	■	■
Stralis 02.02-					Truck Tractor				
AT 440S33 CNG (F2GE0682A)		Gasolina		7790	243	330	01.13-	■	
Tector II 08.12-12.18					Platform/Chassis				
150E21 (F4AFE411C)		Diesel		4485	150	204	01.12-	■	
170E22 (F4AE3681B)		Diesel		5883	160	218	01.12-	■	
170E28 (F4AE3681E)		Diesel		5883	206	280	01.12-	■	
240E28 (F4AE3681E)		Diesel		5883	206	280	01.12-	■	
Tector II 08.12-12.18					Truck Tractor				
170E28 (F4AE3681E)		Diesel		5883	206	280	09.12-	■	
Trakker 09.04-					Dump Truck				
AD 190T31, AT 190T31 (F2BE0681B)		Diesel		7790	228	310	10.04-10.07	■	
AD 190T31 W, AT 190T31 W (F2BE0681B)		Diesel		7790	228	310	10.04-12.12	■	
AD 260T31, AT 260T31 (F2BE0681B)		Diesel		7790	228	310	10.04-	■	
AD 190T35, AD 190T36, AT 190T35, AT 190T36 (F2BE0681A)		Diesel		7790	259	352	10.04-12.12	■	
AD 190T35, AD 190T36, AT 190T35, AT 190T36 (F2BE3681A)		Diesel		7790	259	352	10.04-12.12	■	
AD 190T35 W, AD 190T36 W, AT 190T35 W, AT 190T36 W (F2BE0681A)		Diesel		7790	259	352	10.04-10.07	■	
AD 190T35 W, AD 190T36 W, AT 190T35 W, AT 190T36 W (F2BE3681A)		Diesel		7790	259	352	10.04-10.07	■	
AD 260T35, 260T36, 380T36, AT 260T35, 260T36, 380T36 (F2BE0681A)		Diesel		7790	259	352	10.04-12.12	■	

LISTA DE APLICACIONES - BUYERS GUIDE

AD 260T35, 260T36, 380T36, AT 260T35, 260T36, 380T36 (F2BE3681A)	Diesel		7790	259	352	10.04-12.12	■	
AD 190T38, AT 190T38 (F3BE0681G)	Diesel		12882	280	380	10.04-12.12	■	
AD 190T38 W, AT 190T38 W (F3BE0681G)	Diesel		12882	280	380	10.04-10.07	■	
AD 260T38 , AT 260T38 (F3BE0681G)	Diesel		12882	280	380	10.04-	■	
AD 190T44, AD 190T45, AT 190T44, AT 190T45 (F3BE0681C)	Diesel		12882	324	440	10.04-12.12	■	
AD 190T44, AD 190T45, AT 190T44, AT 190T45 (F3BE3681C)	Diesel		12882	324	440	10.04-12.12	■	
AD 190T44 W, AD 190T45 W, AT 190T44 W, AD 190T45W (F3BE0681C)	Diesel		12882	324	440	10.04-12.12	■	
AD 190T44 W, AD 190T45 W, AT 190T44 W, AD 190T45W (F3BE3681C)	Diesel		12882	324	440	10.04-12.12	■	
Trakker 09.04-				Platform/Chassis				
AD 180T27 W, AT 180T27 W (F2BE0681F)	Diesel		7790	200	272	06.05-10.07	■	■
AD 190T31, AT 190T31 (F2BE0681B)	Diesel		7790	228	310	10.04-10.07	■	
AD 190T31 W, AT 190T31 W (F2BE0681B)	Diesel		7790	228	310	06.05-10.07	■	■
AD 190T31 W, AT 190T31 W (F2BE3681C)	Diesel		7790	228	310	06.05-10.07	■	■
AD 190T33 W, AT 190T33 W (F2BE3681B)	Diesel		7790	243	330	03.06-12.12	■	■
AD 260T36 W, AD 380T36 W, AT 260T36 W, AT 380T36 W (F2BE3681A)	Diesel		7790	265	360	10.04-12.12	■	■
AD 260T38, AD 260T38 /P, AT 260T38 (F3BE0681G)	Diesel		12882	280	380	06.05-10.07	■	
AD 260T41 W, AD 380T41 W, AT 260T41 W, AT 380T41 W (F3BE3681D)	Diesel		12882	302	410	03.06-12.12	■	■
AD 260T44, AD 260T44 /P, AT 260T44 (F3BE0681C)	Diesel		12882	324	440	06.05-10.07	■	
AD 260T45 W, AD 380T45 W, AT 260T45 W, AT 380T45 W (F3BE3681C)	Diesel		12882	332	450	03.06-12.12	■	■
AD 410T45 W (F3BE3681C)	Diesel		12882	332	450	03.06-12.12	■	■
Trakker 09.04-				Truck Tractor				
AD 400T41 WT, AT 400T41 WT (F3BE3681D)	Diesel		12882	302	410	03.06-12.12	■	■
AD 400T45 WT, AT 400T45 WT (F3BE3681C)	Diesel		12882	332	450	03.06-12.12	■	■
Zeta 01.79-12.92				Bus				
A 60-9 (8040.05.200)	Diesel		3908	65	88	09.88-12.92	■	
A 60-9 (8040.05.203)	Diesel		3908	65	88	09.88-12.92	■	
A 70-12 (8340.05.200)	Diesel		5401	84	114	01.83-01.85	■	
A 70-14 (8060.05.246)	Diesel		5861	101	137	05.88-12.92	■	
A 70-14 (8060.05.285)	Diesel		5861	101	137	05.88-12.92	■	