

# LISTA DE APLICACIONES - BUYERS GUIDE

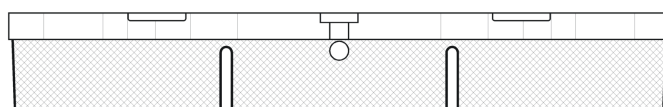
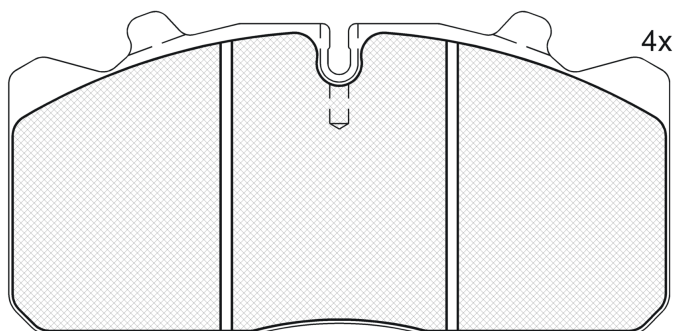
## 151253-067



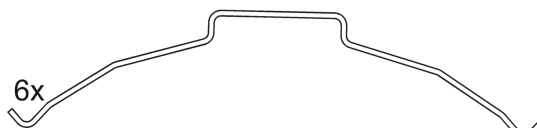
Qty: 660

Weight: 5.515

O.E.M.	MAKE
12182145	MAN
12999577	MAN
12999667	MAN
12999743	MAN
143 6901	DAF
190 6467	IVECO
2012160	DAF
24070005	MAN
2611-12999703VT	MACK
5001 866 951	RENAULT TRUCKS
5010 848 607	RENAULT TRUCKS
7421493598	RENAULT TRUCKS
81 50820 5011	MAN
81 50820 5022	MAN
81 50820 5023	MAN
81 50820 5024	MAN
81 50820 5025	MAN
81 50820 5029	MAN
81 50820 5030	MAN
81 50820 6006	MAN
81 50820 6007	MAN
81 50820 6020	MAN
81 50820 6021	MAN
81 50820 6042	MAN



## 151253-067



1 - Ref. 690061 E

## 151253-067



90R-01178/860



Perrot-Wabco PAN 17

175.4x86.2x26

WVA	FMSI
29088	D1518-8727
29091	
MAKE	
DAF	
IVECO	
MAN	
OPTARE	
RENAULT TRUCKS	



Trac.	CC	Kw	CV		
				Front / Rear	

DAF

**LF 45 01.01-**

**Dump Truck**

FA 45.160	Diesel	4461	118	160	05.06-	■	■
FA 45.180	Diesel	4461	136	185	05.06-	■	■
FA 45.210 (FR 152)	Diesel	4461	152	207	01.09-	■	■

**LF 45 01.01-**

**Platform/Chassis**

FA 45.160 HYBRID (FR 118 S1)	Bicombu stible	4461	118	160	05.06-	■	■
------------------------------	----------------	------	-----	-----	--------	---	---

**LF 45 01.01-**

**Platform/Chassis**

FA 45.130 (BE 99 C)	Diesel	3920	99	135	03.01-06.06	■	■
FA 45.130 (BE 99 C)	Diesel	3920	99	135	03.01-06.06	■	■
FA 45.130 (BE 99 C)	Diesel	3920	99	135	03.01-06.06	■	■
FA 45.150 (BE 110 C)	Diesel	3920	110	150	01.01-	■	■
FA 45.150 (BE 110 C)	Diesel	3920	110	150	01.01-	■	■
FA 45.150 (BE 110 C)	Diesel	3920	110	150	01.01-	■	■
FA 45.170 (BE 123 C)	Diesel	3920	123	167	01.01-	■	■
FA 45.170 (BE 123 C)	Diesel	3920	123	167	01.01-	■	■
FA 45.170 (BE 123 C)	Diesel	3920	123	167	01.01-	■	■
FA 45.140 (FR 103 S1)	Diesel	4461	103	140	05.06-	■	■
FA 45.140 (FR 103 S1)	Diesel	4461	103	140	05.06-	■	■
FA 45.140 (FR 103 S1)	Diesel	4461	103	140	05.06-	■	■
FA 45.160 (FR 118 S1)	Diesel	4461	118	160	05.06-	■	■
FA 45.160 (FR 118 S1)	Diesel	4461	118	160	05.06-	■	■
FA 45.160 (FR 118 S1)	Diesel	4461	118	160	05.06-	■	■
FA 45.180 (FR 136 S1)	Diesel	4461	136	185	05.06-	■	■

# LISTA DE APLICACIONES - BUYERS GUIDE

FA 45.180 (FR 136 S1)		Diesel		4461	136	185	05.06-	■	■
FA 45.180 (FR 136 S1)		Diesel		4461	136	184	05.06-	■	■
FA 45.180 (FR 136 S1)		Diesel		4461	136	185	05.06-	■	■
FA 45.210 (FR 152)		Diesel		4461	152	207	01.09-	■	■
FA 45.210 (FR 152)		Diesel		4461	152	207	01.09-	■	■
FA 45.180 (CE 136 C)		Diesel		5880	136	185	01.01-	■	■
FA 45.180 (CE 136 C)		Diesel		5880	136	185	01.01-	■	■
FA 45.180 (CE 136 C)		Diesel		5880	136	185	01.01-	■	■
FA 45.220 (CE 162 C)		Diesel		5880	162	220	01.01-	■	■
FA 45.220 (CE 162 C)		Diesel		5880	162	220	01.01-	■	■
FA 45.220 (CE 162 C)		Diesel		5880	162	220	01.01-	■	■
FA 45.220 (GR 165 S1)		Diesel		6691	165	224	05.06-	■	■
FA 45.220 (GR 165 S1)		Diesel		6691	165	224	05.06-	■	■
FA 45.220 (GR 165 S1)		Diesel		6691	165	224	05.06-	■	■
FA 45.250 (GR 184 S1)		Diesel		6691	184	250	03.06-	■	■
FA 45.250 (GR 184 S1)		Diesel		6691	184	250	03.06-	■	■
IVECO									
10.00-07.07					Municipal Vehicle				
120 E 22 tector (F4AE3681B)		Diesel		5883	160	218	09.06-07.07	■	■
EuroCargo I-III 01.91-09.15					Platform/Chassis				
120 EL 17, 120 EL 17 P tector, 120 E 18, 120 EL 18 tector (F4AE0481A)		Diesel		3922	125	170	09.00-09.15	■	■
120 EL 17, 120 EL 17 P tector, 120 E 18, 120 EL 18 tector (F4AE3481A)		Diesel		3922	125	170	09.00-09.15	■	■
120 EL 21, 120 EL 21 P tector, 120 E 22, 120 EL 22 tector (F4AE0681C)		Diesel		5883	154	209	09.00-09.15	■	■
120 EL 21, 120 EL 21 P tector, 120 E 22, 120 EL 22 tector (F4AE0681D)		Diesel		5883	154	209	09.00-09.15	■	■
120 EL 21, 120 EL 21 P tector, 120 E 22, 120 EL 22 tector (F4AE3681B)		Diesel		5883	154	209	09.00-09.15	■	■
MAN									
L2000 06.93-					Bus				
10.150 FOC (D 0824 LFO)		Diesel		4580	114	155	02.95-01.96	■	■
8.150 FOC,8.150 FOCL (D 0824 LFO)	01/96-	Diesel		4580	114	155	02.95-	■	■
10.220 FOC,10.220 FOCL (D 0826 LFL03)	01/96-	Diesel		6871	162	220	02.95-	■	■
8.220 FOC,8.220 FOCL (D 0826 LFL03)	01/96-	Diesel		6871	162	220	04.95-	■	■
L2000 06.93-					Dump Truck				
8.103 LK (D 0824 FL 01)	01/95-	Diesel		4580	75	102	10.93-06.96	■	
8.113 LK, L-KI, LRK, LR-KI, LRK-L, LK-L (D 0824 LFL 04)	01/96-	Diesel		4580	81	110	08.95-	■	
8.113 LK, L-KI, LRK, LR-KI, LRK-L, LK-L		Diesel		4580	81	110	08.95-	■	■
10.145 LK, L-KI, LRK, LR-KI, LRK-L, LK-L (LE140C) (D 0834 LFL 02)		Diesel		4580	103	140	09.00-	■	
8.145 LK, LRK, L-KI, LRK-L, LK-L, LR-KILK (LE140C) (D 0834 LFL 02)		Diesel		4580	103	140	09.00-	■	
9.145 LK, L-KI, LRK, LR-KI, LRK-L, LK-L (LE140C) (D 0834 LFL 02)		Diesel		4580	103	140	09.00-	■	
8.163 LAK, LARK, LAEK, LAERK		Diesel		4580	104	141	04.00-	■	■
9.163 LK (D 0824 LFL 07)	01/96-	Diesel		4580	104	141	08.95-03.97	■	
10.153 LK (D 0824 LFL 01)	01/96-	Diesel		4580	114	155	10.93-06.96	■	
10.153 LK (D 0824 LFL 05)	01/96-	Diesel		4580	114	155	10.93-06.96	■	
10.155 LK, L-KI, LRK, LR-KI, LK-L		Diesel		4580	114	155	02.04-	■	■
10.163 LAEK, LAEK-L, LAERK, LAERK-L, LAK, LAK-L, LARK (D 0824 LFL 02)	01/96-	Diesel		4580	114	155	01.95-	■	
10.163 LAEK, LAEK-L, LAERK, LAERK-L, LAK, LAK-L, LARK (D 0824 LFL 06)	01/96-	Diesel		4580	114	155	01.95-	■	

# LISTA DE APLICACIONES - BUYERS GUIDE

10.163 LAEK, LAEK-L, LAERK, LAERK-L, LAK, LAK-L, LARK (D 0824 LFL 09)	01/96-	Diesel		4580	114	155	01.95-	■	
10.163 LK, L-KI, LRK, LR-KI, LRK-L, LK-L (D 0824 LFL 02)	01/96-	Diesel		4580	114	155	05.94-	■	
10.163 LK, L-KI, LRK, LR-KI, LRK-L, LK-L (D 0824 LFL 06)	01/96-	Diesel		4580	114	155	05.94-	■	
10.163 LK, L-KI, LRK, LR-KI, LRK-L, LK-L (D 0824 LFL 09)	01/96-	Diesel		4580	114	155	05.94-	■	
8.153 LAEK (D 0824 LFL 01)		Diesel		4580	114	155	01.95-09.96	■	
8.153 LAEK (D 0824 LFL 05)		Diesel		4580	114	155	01.95-09.96	■	
8.153 LK (D 0824 LFL 01)	01/95-	Diesel		4580	114	155	10.93-07.97	■	
8.153 LK (D 0824 LFL 05)	01/95-	Diesel		4580	114	155	10.93-07.97	■	
8.155 LK, L-KI, LR-KI, LRK-L, LK-L		Diesel		4580	114	155	02.04-	■	■
8.155 LK, LRK		Diesel		4580	114	155	02.04-	■	■
8.163 LK, L-KI, LRK, LR-KI, LRK-L, LK-L (D 0824 LFL 02)	01/96-	Diesel		4580	114	155	05.94-	■	
8.163 LK, L-KI, LRK, LR-KI, LRK-L, LK-L (D 0824 LFL 06)	01/96-	Diesel		4580	114	155	05.94-	■	
8.163 LK, L-KI, LRK, LR-KI, LRK-L, LK-L (D 0824 LFL 09)	01/96-	Diesel		4580	114	155	05.94-	■	
8.163 LK, L-KI, LRK, LR-KI, LRK-L, LK-L		Diesel		4580	114	155	05.94-	■	■
9.153 LK (D 0824 LFL 01)	01/96-	Diesel		4580	114	155	10.93-06.96	■	
9.153 LK (D 0824 LFL 05)	01/96-	Diesel		4580	114	155	10.93-06.96	■	
9.155 LK, L-KI, LRK, LR-KI, LRK-L, LK-L		Diesel		4580	114	155	02.04-	■	■
9.163 LK, L-KI, LRK, LR-KI, LRK-L, LK-L (D 0824 LFL 02)	01/96-	Diesel		4580	114	155	05.94-	■	
9.163 LK, L-KI, LRK, LR-KI, LRK-L, LK-L (D 0824 LFL 06)	01/96-	Diesel		4580	114	155	05.94-	■	
9.163 LK, L-KI, LRK, LR-KI, LRK-L, LK-L (D 0824 LFL 09)	01/96-	Diesel		4580	114	155	05.94-	■	
10.185 LAEK, LAEK-L, LAERK, LAERK-L, LAK, LAK-L, LARK (D 0834 LFL 03)		Diesel		4580	132	180	09.00-	■	
10.185 LK, L-KI, LRK, LR-KI, LRK-L, LK-L (LE180C) (D 0834 LFL 03)		Diesel		4580	132	180	09.00-	■	
8.185 LAEK, LAEK-L, LAERK, LAERK-L, LAK, LAK-L, LARK, LARK-L (D 0834 LFL 03)		Diesel		4580	132	180	09.00-	■	
8.185 LK, L-KI, LRK, LR-KI LRK-L, LK-L (LE180C) (D 0834 LFL 03)		Diesel		4580	132	180	09.00-	■	
9.185 LK, L-KI, LRK, LR-KI, LRK-L, LK-L (LE180C) (D 0834 LFL 03)		Diesel		4580	132	180	09.00-	■	
10.223 LK (D 0826 LFL02)	01/96-	Diesel		6871	162	220	10.93-06.96	■	
10.223 LK (D 0826 LFL06)	01/96-	Diesel		6871	162	220	10.93-06.96	■	
10.224 LAEK, LAEK-L, LAERK, LAERK-L, LAK, LAK-L, LARK (D 0826 LFL03)	01/96-	Diesel		6871	162	220	01.95-	■	
10.224 LK, L-KI, LRK, LR-KI, LRK-L, LK-L (D 0826 LFL03)	01/96-	Diesel		6871	162	220	05.94-	■	
10.225 LAEK, LAEK-L, LAERK, LAERK-L, LAK, LAK-L, LARK (D 0836 LFL 02)		Diesel		6871	162	220	09.00-	■	
10.225 LK, L-KI, LRK, LR-KI, LRK-L, LK-L (LE220C) (D 0836 LFL 02)		Diesel		6871	162	220	09.00-	■	
8.223 LK (D 0826 LFL02)	01/96-	Diesel		6871	162	220	10.93-06.96	■	
8.223 LK (D 0826 LFL06)	01/96-	Diesel		6871	162	220	10.93-06.96	■	
8.224 LAEK, LAEK-L, LAERK, LAERK-L, LAK, LAK-L, LARK, LARK-L		Diesel		6871	162	220	01.95-	■	■
8.224 LAK, LAEK, LARK, LAERK (D 0826 LFL03)	01/96-	Diesel		6871	162	220	01.95-	■	
8.224 LK, LRK, L-KI, LR-KI (D 0826 LFL03)	01/96-	Diesel		6871	162	220	05.94-	■	
8.224 LK, LRK, L-KI, LR-KI		Diesel		6871	162	220	05.94-	■	■
8.225 LAEK, LAEK-L, LAERK, LAERK-L, LAK, LAK-L, LARK, LARK-L (D 0836 LFL 02)		Diesel		6871	162	220	09.00-	■	
8.225 LK, L-KI, LRK, LR-KI, LRK-L, LK-L (LE220C) (D 0836 LFL 02)		Diesel		6871	162	220	09.00-	■	
9.223 LK (D 0826 LFL02)	01/96-	Diesel		6871	162	220	10.93-06.96	■	
9.223 LK (D 0826 LFL06)	01/96-	Diesel		6871	162	220	10.93-06.96	■	

# LISTA DE APLICACIONES - BUYERS GUIDE

9.224 LK, L-KI, LRK, LR-KI, LRK-L, LK-L (D 0826 LFL03)	01/96-	Diesel		6871	162	220	05.94-	■	
9.225 LK, L-KI, LRK, LR-KI, LRK-KI, LK-L (LE220C) (D 0836 LFL 02)		Diesel		6871	162	220	09.00-	■	
<b>L2000 06.93-</b>					<b>Municipal Vehicle</b>				
8.145 L-LF		Diesel		4580	103	140	09.00-	■	■
10.153 F (D 0824 LFL 01)		Diesel		4580	114	155	06.93-04.06	■	■
10.153 F (D 0824 LFL 05)		Diesel		4580	114	155	06.93-04.06	■	■
10.163 F (D 0824 LFL 06)		Diesel		4580	114	155	06.93-04.06	■	■
8.155 L-LF		Diesel		4580	114	155	02.04-	■	■
8.163 L-LF		Diesel		4580	114	155	05.94-	■	■
8.185 L-LF		Diesel		4580	132	180	09.00-	■	■
10.223 F, 10.223 FL (D 0826 LFL06)		Diesel		6871	162	220	06.93-04.02	■	■
10.224 F, 10.224 FL (D 0826 LFL03)		Diesel		6871	162	220	06.93-04.02	■	■
<b>L2000 06.93-</b>					<b>Platform/Chassis</b>				
8.103 LC, 8.103 LLC (D 0824 FL 01)	01/96-	Diesel		4580	75	102	10.93-06.96	■	■
8.113 LC, 8.113 LLC (D 0824 LFL 04)	01/96-	Diesel		4580	81	110	08.95-	■	■
8.113 LC,8.113 LLC, LRC, LLRC(LE110C) (D 0824 LFL 08)		Diesel		4580	83	113	09.00-	■	■
10.145 LC,10.145 LLC, LRC, LLRC (LE140C) (D 0834 LFL 02)		Diesel		4580	103	140	09.00-	■	■
8.145, LA-LF LAE-LF		Diesel		4580	103	140	07.00-	■	■
8.145 LC, LLC, LLRC, LRC (LE140C) (D 0834 LFL 02)		Diesel		4580	103	140	09.00-	■	■
9.145 LC,9.145 LLC, LRC, LLRC (LE140C) (D 0834 LFL 02)		Diesel		4580	103	140	09.00-	■	■
8.163 LAEC (D 0824 LFL 07)		Diesel		4580	104	141	08.95-03.97	■	
8.163 LC,8.163 LLC, LRC, LLRC, L-LF (D 0824 LFL 07)	01/96-	Diesel		4580	104	141	08.95-	■	■
9.163 LC (D 0824 LFL 07)	01/96-	Diesel		4580	104	141	08.95-03.97	■	■
10.153 LAEK (D 0824 LFL 01)	01/96-	Diesel		4580	114	155	10.93-06.96	■	
10.153 LAEK (D 0824 LFL 05)	01/96-	Diesel		4580	114	155	10.93-06.96	■	
10.153 LC,10.153 LLC (D 0824 LFL 01)	01/96-	Diesel		4580	114	155	10.93-06.96	■	■
10.153 LC,10.153 LLC (D 0824 LFL 05)	01/96-	Diesel		4580	114	155	10.93-06.96	■	■
10.155 LC, LLC, LLRC, LRC, LLRC		Diesel		4580	114	155	09.00-	■	■
10.163 LAC, LAEC, LARC, LAERC (D 0824 LFL 02)	01/96-	Diesel		4580	114	155	05.94-	■	
10.163 LAC, LAEC, LARC, LAERC (D 0824 LFL 06)	01/96-	Diesel		4580	114	155	05.94-	■	
10.163 LAC, LAEC, LARC, LAERC (D 0824 LFL 09)	01/96-	Diesel		4580	114	155	05.94-	■	
10.163 LC,10.163 LLC (D 0824 LFL 02)	01/96-	Diesel		4580	114	155	05.94-	■	■
10.163 LC,10.163 LLC (D 0824 LFL 06)	01/96-	Diesel		4580	114	155	05.94-	■	■
10.163 LC,10.163 LLC (D 0824 LFL 09)	01/96-	Diesel		4580	114	155	05.94-	■	■
10.163 LC,10.163 LLC, LRC, LLRC (LE160C) (D 0824 LFL 09)		Diesel		4580	114	155	09.00-	■	■
8.153 LAEC (D 0824 LFL 01)		Diesel		4580	114	155	01.95-06.96	■	
8.153 LAEC (D 0824 LFL 05)		Diesel		4580	114	155	01.95-06.96	■	
8.153 LC,8.153 LLC (D 0824 LFL 01)	01/96-	Diesel		4580	114	155	10.93-07.97	■	■
8.153 LC,8.153 LLC (D 0824 LFL 05)	01/96-	Diesel		4580	114	155	10.93-07.97	■	■
8.155 L, LR, LC, LLC, LRC, LLRC, L-LF		Diesel		4580	114	155	02.04-	■	■
8.155 LC, LLC, LRC, LLRC		Diesel		4580	114	155	02.04-	■	■
8.163 LAC, LAEC, LARC, LAERC, LA-LF, LAE-LF (D 0824 LFL 02)	-12/96	Diesel		4580	114	155	01.95-	■	
8.163 LAC, LAEC, LARC, LAERC, LA-LF, LAE-LF (D 0824 LFL 06)	-12/96	Diesel		4580	114	155	01.95-	■	
8.163 LAC, LAEC, LARC, LAERC, LA-LF, LAE-LF (D 0824 LFL 09)	-12/96	Diesel		4580	114	155	01.95-	■	

# LISTA DE APLICACIONES - BUYERS GUIDE

8.163 LAC, LAEC, LARC, LAERC, LA-LF, LAE-LF		Diesel		4580	114	155	01.95-	■	■
8.163 LC,8.163 LLC (D 0824 LFL 02)	01/96-	Diesel		4580	114	155	05.94-	■	■
8.163 LC,8.163 LLC (D 0824 LFL 06)	01/96-	Diesel		4580	114	155	05.94-	■	■
8.163 LC,8.163 LLC (D 0824 LFL 09)	01/96-	Diesel		4580	114	155	05.94-	■	■
8.163 LC, LLC, LLRC, LRC (LE160C) (D 0824 LFL 09)		Diesel		4580	114	155	09.00-	■	■
9.153 LC,9.153 LLC (D 0824 LFL 01)	01/96-	Diesel		4580	114	155	10.93-06.96	■	■
9.153 LC,9.153 LLC (D 0824 LFL 05)	01/96-	Diesel		4580	114	155	10.93-06.96	■	■
9.155 L, LC, LLC, LRC, LLRC		Diesel		4580	114	155	02.04-	■	■
9.163 LC,9.163 LLC, LRC, LLRC (D 0824 LFL 02)	01/96-	Diesel		4580	114	155	05.94-	■	■
9.163 LC,9.163 LLC, LRC, LLRC (D 0824 LFL 06)	01/96-	Diesel		4580	114	155	05.94-	■	■
9.163 LC,9.163 LLC, LRC, LLRC (D 0824 LFL 09)	01/96-	Diesel		4580	114	155	05.94-	■	■
10.185 LAC, LAEC, LARC, LAERC, LA-LA (LE180C) (D 0834 LFL 03)		Diesel		4580	132	180	09.00-	■	
10.185 LC,10.185 LLC, LRC, LLRC (LE180C) (D 0834 LFL 03)		Diesel		4580	132	180	09.00-	■	■
12.185 LC, LLC (LE180C) (D 0834 LFL 03)	01/00-	Diesel		4580	132	180	09.99-	■	■
8.185 LAC, LAEC, LARC, LAERC, LA-LF, LAE-LF (LE180C) (D 0834 LFL 03)		Diesel		4580	132	180	09.00-	■	
8.185 LC, LLC, LRC, LLRC (LE180C) (D 0834 LFL 03)		Diesel		4580	132	180	09.00-	■	■
9.185 LC,9.185 LLC, LRC, LLRC (LE180C) (D 0834 LFL 03)		Diesel		4580	132	180	09.00-	■	■
10.223 LAEC (D 0826 LFL06)	01/96-	Diesel		6871	162	220	01.95-06.96	■	
10.223 LC,10.223 LLC (D 0826 LFL02)	01/96-	Diesel		6871	162	220	10.93-06.96	■	■
10.223 LC,10.223 LLC (D 0826 LFL06)	01/96-	Diesel		6871	162	220	10.93-06.96	■	■
10.224 LAC, LAEC, LARC, LAERC (D 0826 LFL03)	01/96-	Diesel		6871	162	220	01.95-	■	
10.224 LAC, LAEC, LARC, LAERC (D 0826 LFL10)	01/96-	Diesel		6871	162	220	01.95-	■	
10.224 LC,10.224 LLC, LRC, LLRC (D 0826 LFL03)	01/96-	Diesel		6871	162	220	05.94-	■	■
10.224 LC,10.224 LLC, LRC, LLRC (D 0826 LFL10)	01/96-	Diesel		6871	162	220	05.94-	■	■
10.225 LAC, LAEC, LARC, LAERC (LE220C) (D 0836 LFL 02)		Diesel		6871	162	220	09.00-	■	
10.225 LC, 10.225 LLC, LRC, LLRC (LE220C) (D 0836 LFL 02)		Diesel		6871	162	220	09.00-	■	■
10.225 LC, 10.225 LLC, LRC, LLRC (LE220C) (D 0836 LFL 02)		Diesel		6871	162	220	09.00-	■	■
12.225 LC, LLC (LE220C) (D 0836 LFL 02)	01/00-	Diesel		6871	162	220	09.99-	■	■
8.223 LAEC (D 0826 LFL06)		Diesel		6871	162	220	01.95-06.96	■	
8.223 LC,8.223 LLC (D 0826 LFL02)	01/96-	Diesel		6871	162	220	10.93-06.96	■	■
8.223 LC,8.223 LLC (D 0826 LFL06)	01/96-	Diesel		6871	162	220	10.93-06.96	■	■
8.224 LAC, LAEC, LARC, LAERC (D 0826 LFL03)		Diesel		6871	162	220	01.95-	■	
8.224 LAC, LAEC, LARC, LAERC		Diesel		6871	162	220	01.95-	■	■
8.224 LC,8.224 LLC, LRC, LLRC (D 0826 LFL03)	01/96-	Diesel		6871	162	220	05.94-	■	■
8.224 LC, LLC, LRC, LLRC		Diesel		6871	162	220	05.94-	■	■
8.225 LAC, LAEC, LARC, LAERC (LE220C) (D 0836 LFL 02)		Diesel		6871	162	220	09.00-	■	
8.225 LC,8.225 LLC, LRC, LLRC (LE220C) (D 0826 LFL10)		Diesel		6871	162	220	09.00-	■	■
8.225 LC,8.225 LLC, LRC, LLRC (LE220C) (D 0836 LFL 02)		Diesel		6871	162	220	09.00-	■	■
9.223 LC,9.223 LLC (D 0826 LFL02)	01/96-	Diesel		6871	162	220	10.93-06.96	■	■
9.223 LC,9.223 LLC (D 0826 LFL06)	01/96-	Diesel		6871	162	220	10.93-06.96	■	■
9.224 LC,9.224 LLC, LRC, LLRC (D 0826 LFL03)	01/96-	Diesel		6871	162	220	05.94-	■	■

# LISTA DE APLICACIONES - BUYERS GUIDE

9.225 LC,9.225 LLC, LRC, LLRC (LE220C) (D 0836 LFL 02)		Diesel		6871	162	220	09.00-	■	■
<b>L2000 06.93-</b>					<b>Truck Tractor</b>				
10.145 LLS, LLRS (LE140C) (D 0834 LFL 02)		Diesel		4580	103	140	09.00-	■	■
8.145 LLS, LLRS (LE140C) (D 0834 LFL 02)		Diesel		4580	103	140	09.00-	■	■
9.145 LLS, LLRS (LE140C) (D 0834 LFL 02)		Diesel		4580	103	140	09.00-	■	■
10.153 LLS (D 0824 LFL 01)	01/96-	Diesel		4580	114	155	10.93-06.96	■	■
10.153 LLS (D 0824 LFL 05)	01/96-	Diesel		4580	114	155	10.93-06.96	■	■
10.163 LLS, LLRS (D 0824 LFL 02)	01/96-	Diesel		4580	114	155	05.94-	■	■
10.163 LLS, LLRS (D 0824 LFL 06)	01/96-	Diesel		4580	114	155	05.94-	■	■
10.163 LLS, LLRS (D 0824 LFL 09)	01/96-	Diesel		4580	114	155	05.94-	■	■
8.153 LLS (D 0824 LFL 01)	01/96-	Diesel		4580	114	155	10.93-06.96	■	■
8.153 LLS (D 0824 LFL 05)	01/96-	Diesel		4580	114	155	10.93-06.96	■	■
8.155 LLS, LLRS		Diesel		4580	114	155	02.04-	■	■
8.155 LLS, LLRS		Diesel		4580	114	155	02.04-	■	■
8.163 LLS, LLRS (D 0824 LFL 02)	01/96-	Diesel		4580	114	155	05.94-	■	■
8.163 LLS, LLRS (D 0824 LFL 06)	01/96-	Diesel		4580	114	155	05.94-	■	■
8.163 LLS, LLRS (D 0824 LFL 09)	01/96-	Diesel		4580	114	155	05.94-	■	■
8.163 LLS, LLRS		Diesel		4580	114	155	05.94-	■	■
9.155 LLS, LLRS		Diesel		4580	114	155	02.04-	■	■
9.163 LLS, LLRS (D 0824 LFL 02)	01/96-	Diesel		4580	114	155	05.94-	■	■
9.163 LLS, LLRS (D 0824 LFL 06)	01/96-	Diesel		4580	114	155	05.94-	■	■
9.163 LLS, LLRS (D 0824 LFL 09)	01/96-	Diesel		4580	114	155	05.94-	■	■
10.185 LLS, LLRS (LE180C) (D 0834 LFL 03)		Diesel		4580	132	180	09.00-	■	■
8.185 LLS, LLRS (LE180C) (D 0834 LFL 03)		Diesel		4580	132	180	09.00-	■	■
9.185 LLS, LLRS (LE 180C) (D 0834 LFL 03)		Diesel		4580	132	180	09.00-	■	■
10.223 LLS (D 0826 LFL02)	01/96-	Diesel		6871	162	220	10.93-06.96	■	■
10.223 LLS (D 0826 LFL06)	01/96-	Diesel		6871	162	220	10.93-06.96	■	■
10.224 LLS, LLRS (D 0826 LFL03)	01/96-	Diesel		6871	162	220	05.94-	■	■
10.225 LLS, LLRS (LE220C) (D 0836 LFL 02)		Diesel		6871	162	220	09.00-	■	■
8.223 LLS (D 0826 LFL02)	01/96-	Diesel		6871	162	220	10.93-06.96	■	■
8.223 LLS (D 0826 LFL06)	01/96-	Diesel		6871	162	220	10.93-06.96	■	■
8.224 LLS, LLRS (D 0826 LFL03)	01/96-	Diesel		6871	162	220	05.94-	■	■
8.224 LLS, LLRS		Diesel		6871	162	220	05.94-	■	■
8.225 LLS, LLRS (LE220C) (D 0836 LFL 02)		Diesel		6871	162	220	09.00-	■	■
9.223 LLS (D 0826 LFL02)	01/96-	Diesel		6871	162	220	10.93-06.96	■	■
9.223 LLS (D 0826 LFL06)	01/96-	Diesel		6871	162	220	10.93-06.96	■	■
9.224 LLS, LLRS (D 0826 LFL03)	01/96-	Diesel		6871	162	220	05.94-	■	■
9.225 LLS, LLRS (LE220C) (D 0836 LFL 02)		Diesel		6871	162	220	09.00-	■	■
<b>M 2000 L 04.95-</b>					<b>Dump Truck</b>				
12.145 LK, LRK		Diesel		4580	107	145	05.01-	■	■
12.163 LK, LRK (D 0824 LFL 06)		Diesel		4580	114	155	08.95-	■	■
12.163 LK, LRK (D 0824 LFL 09)		Diesel		4580	114	155	08.95-	■	■
12.185 LK, LRK		Diesel		4580	132	180	05.01-	■	■
14.185 LK, LRK		Diesel		4580	132	180	05.01-	■	■
12.224, 12.225, LK, LRK (D 0826 LFL03)		Diesel		6871	162	220	08.95-	■	■
12.224, 12.225, LK, LRK (D 0826 LFL10)		Diesel		6871	162	220	08.95-	■	■
12.255 LK, LRK		Diesel		6871	180	245	10.03-	■	■
14.255 LAK, LARK, LAK-L		Diesel		6871	180	245	11.02-	■	■
14.255 LK, LRK		Diesel		6871	180	245	11.02-	■	■
12.285 LK, LRK		Diesel		6871	206	280	10.03-	■	■

# LISTA DE APLICACIONES - BUYERS GUIDE

M 2000 L 04.95-					Municipal Vehicle				
14.224, 14.225, LA-LF	Diesel		6871	162	220	07.03-	■	■	
14.255 LA-LF	Diesel		6871	180	245	07.03-	■	■	
14.264 LA-LF	Diesel		6871	191	260	07.03-	■	■	
M 2000 L 04.95-					Platform/Chassis				
12.145 LC, LLC, LRC, LLRC	Diesel		4580	107	145	05.01-	■	■	
12.163 LC, LLC, LRC, LLRC (D 0824 LFL 06)	Diesel		4580	114	155	08.95-	■	■	
12.163 LC, LLC, LRC, LLRC (D 0824 LFL 09)	Diesel		4580	114	155	08.95-	■	■	
14.163 LC, LLC, LRC, LLRC (D 0824 LFL 06)	Diesel		4580	114	155	08.95-	■	■	
14.163 LC, LLC, LRC, LLRC (D 0824 LFL 09)	Diesel		4580	114	155	08.95-	■	■	
12.185 LC, LLC, LRC, LLRC (D 0834 LFL 03)	Diesel		4580	132	180	05.01-	■	■	
14.185 LC, LLC, LRC, LLRC	Diesel		4580	132	180	05.01-	■	■	
12.224 LC, LLC, LRC, LLRC (D 0826 LFL03)	Diesel		6871	162	220	08.95-	■	■	
12.224 LC, LLC, LRC, LLRC (D 0826 LFL10)	Diesel		6871	162	220	08.95-	■	■	
12.225 LC, LLC, LLLC, LRC, LLRC (D 0836 LFL 02)	Diesel		6871	162	220	05.01-	■	■	
12.255 LC, LLC, LLLC, LLRC, LRC	Diesel		6871	180	245	08.02-	■	■	
14.255 LAC, LARC	Diesel		6871	180	245	11.02-	■	■	
12.285 LC, LLC, LLLC, LLRC, LRC	Diesel		6871	206	280	08.02-	■	■	
M 2000 M 08.95-12.05					Platform/Chassis				
12.224 MC, MLC, MLLC, MLRC, MRC, MLLRC	Diesel		6871	162	220	02.03-12.05	■	■	
12.225 MC, MLC, MLLC, MLRC, MRC, MLLRC (D 0836 LF 04)	Diesel		6871	162	220	02.03-12.05	■	■	
14.225 MC, MLC, MLLC, MLRC, MRC, MLLRC (D 0836 LF 02)	Diesel		6871	162	220	10.00-12.05	■	■	
14.225 MC, MLC, MLLC, MLRC, MRC, MLLRC (D 0836 LF 04)	Diesel		6871	162	220	10.00-12.05	■	■	
18.225 MAC, MARC (D 0836 LF 04)	Diesel		6871	162	220	02.03-12.05	■	■	
18.225 MC, MLC, MLLC, MRC, MLRC, MLLRC (D 0836 LF 04)	Diesel		6871	162	220	10.00-12.05	■	■	
25.224 MNLC, MNLLC, MNLRC, MNLLRC, MVLC	Diesel		6871	162	220	08.95-12.05	■	■	
25.225 MNLC, MNLLC, MNLRC, MNLLRC, MVLC (D 0836 LF 04)	Diesel		6871	162	220	02.03-12.05	■	■	
25.225 MNLC, MNLLC, MNLRC, MNLLRC, MVLC (D 0836 LFL 02)	Diesel		6871	162	220	02.03-12.05	■	■	
25.225 MNLC, MNLLC, MNLRC, MNLLRC, MVLC	Diesel		6871	162	220	02.03-12.05	■	■	
12.255 MC, MLC, MLLC, MLRC, MRC, MLLRC	Diesel		6871	180	245	02.03-12.05	■	■	
14.255 MAK, MAK-L, MARK	Diesel		6871	180	245	11.02-12.05	■	■	
25.255 MNLC, MNLLC, MNLRC, MNLLRC, MVLC	Diesel		6871	180	245	10.00-12.05	■	■	
12.264 MC, MLC, MLLC, MLRC, MRC, MLLRC	Diesel		6871	191	260	02.03-12.05	■	■	
14.264 MAK, MAK-L, MARK	Diesel		6871	191	260	11.02-12.05	■	■	
25.264 MNLC, MNLLC, MNLRC, MNLLRC, MVLC	Diesel		6871	191	260	08.95-12.05	■	■	
12.284 MC, MLC, MLLC, MLRC, MRC, MLLRC	Diesel		6871	206	280	02.00-12.05	■	■	
12.285 MC, MLC, MLLC, MLRC, MRC, MLLRC (D 0836 LF 03)	Diesel		6871	206	280	02.03-12.05	■	■	
18.285 MAC, MARC (D 0836 LF 03)	Diesel		6871	206	280	02.03-12.05	■	■	
25.284 MNLC, MNLLC, MNLRC, MNLLRC, MVLC	Diesel		6871	206	280	02.00-12.05	■	■	
25.285 MNLC, MNLLC, MNLRC, MNLLRC, MVLC (D 0836 LF 03)	Diesel		6871	206	280	02.03-12.05	■	■	
25.285 MNLC, MNLLC, MNLRC, MNLLRC, MVLC (D 0836 LFL 03)	Diesel		6871	206	280	02.03-12.05	■	■	
25.285 MNLC, MNLLC, MNLRC, MNLLRC, MVLC	Diesel		6871	206	280	02.03-12.05	■	■	

# LISTA DE APLICACIONES - BUYERS GUIDE

M 2000 M 08.95-12.05					Truck Tractor				
12.224 MLS, MLRS		Diesel		6871	162	220	02.03-12.05	■	■
12.225 MLS, MLRS (D 0836 LF 04)		Diesel		6871	162	220	02.03-12.05	■	■
14.225 MLS, MLRS (D 0836 LF 04)		Diesel		6871	162	220	02.03-12.05	■	■
12.255 MLS		Diesel		6871	180	245	02.03-12.05	■	■
14.255 MLS, MLRS (D 0836 LF 05)		Diesel		6871	180	245	10.00-12.05	■	■
12.264 MLS, MLRS		Diesel		6871	191	260	02.03-12.05	■	■
12.284 MLS, MLRS		Diesel		6871	206	280	02.00-12.05	■	■
12.285 MLS, MLRS		Diesel		6871	206	280	02.00-12.05	■	■
14.285 MLS, MLRS (D 0836 LF 03)		Diesel		6871	206	280	02.03-12.05	■	■
18.285 MLS, MLRS (D 0836 LF 03)		Diesel		6871	206	280	02.03-12.05	■	■
SG 09.72-					Bus				
SG 192	01/96-	Diesel					09.72-	■	■
SL III 01.96-									
SL 160		Diesel					01.96-	■	■
SL 750		Diesel					01.96-	■	■
SÜ 10.75-					Bus				
SÜ 210	01/96-	Diesel					10.75-	■	■
SÜ 230	01/96-	Diesel					10.75-	■	■
OPTARE									
SOLO 10.97-					Bus				
-	01/02-	Diesel					10.97-	■	■
M 710 SE, M 780 SE		Diesel		4249	95	127	05.08-	■	■
M 710 SE, M 780 SE		Diesel		4249	115	156	05.08-	■	■
M 810, M 880, M 950, M 1020		Diesel		4249	115	156	05.08-	■	■
M 710 SE, M 780 SE		Diesel		4580	132	180	05.08-	■	■
M 810, M 880, M 950, M 1020		Diesel		4580	132	180	05.08-	■	■
M 710 SE, M 780 SE		Diesel		5883	150	204	05.08-	■	■
M 810, M 880, M 950, M 1020		Diesel		5883	150	204	05.08-	■	■
SOLO SR 10.07-					Bus				
M 890, M 960		Diesel		4249	115	156	10.07-	■	■
M 890, M 960 (D 0834 LOH 50)		Diesel		4580	132	180	10.07-	■	■
M 890, M 960		Diesel		5880	150	204	10.07-	■	■
VERSA 11.06-					Bus				
V 1040, V 1110		Diesel		4249	115	156	11.06-	■	■
V 1040, V 1110 (D 0834 LOH 50)		Diesel		4580	132	180	11.06-	■	■
V 1040, V 1110		Diesel		5883	150	204	11.06-	■	■
RENAULT TRUCKS									
05.06-					Platform/Chassis				
160.08 (DXI 5)		Diesel		4764	118	160	05.06-	■	■
190.08 (DXI 5)		Diesel		4764	140	190	05.06-	■	■
220.08 (DXI 5)		Diesel		4764	158	220	05.06-	■	■
D II 01.13-					Municipal Vehicle				
16 P 250		Diesel		7698	184	250	01.13-	■	■
18 P 250 (DTI8-122HQ)		Diesel		7698	184	250	01.13-	■	■
26 P 250 (DTI8-122HQ)		Diesel		7698	184	250	01.13-	■	■
18 P 280 (DTI8-122HR)		Diesel		7698	206	280	01.13-	■	■
26 P 280 (DTI8-122HR)		Diesel		7698	206	280	01.13-	■	■

# LISTA DE APLICACIONES - BUYERS GUIDE

18 P 320 (DTI8-122HS)		Diesel		7698	235	320	01.13-	■	■
26 P 320 (DTI8-122HS)		Diesel		7698	235	320	01.13-	■	■
<b>D II 01.13-</b>					<b>Platform/Chassis</b>				
10 P 210 (DTI5-122HN)		Diesel		5132	154	209	01.13-	■	■
13 P 210, 13 KP 210 (DTI5-122HN)		Diesel		5132	154	209	01.13-	■	■
14 P 210, 14 KP 210 (DTI5-122HN)		Diesel		5132	154	209	01.13-	■	■
16 P 210, 16 KP 210 (DTI5-122HN)		Diesel		5132	154	209	01.13-	■	■
10 P 240 (DTI5-122HP)		Diesel		5132	176	239	01.13-	■	■
13 P 240, 13 KP 240 (DTI5-122HP)		Diesel		5132	176	239	01.13-	■	■
14 P 240, 14 KP 240 (DTI5-122HP)		Diesel		5132	176	239	01.13-	■	■
16 P 240, 16 KP 240 (DTI5-122HP)		Diesel		5132	176	239	01.13-	■	■
13 P 250, 13 KP 250 (DTI8-122HQ)		Diesel		7698	184	250	01.13-	■	■
14 P 250, 14 KP 250 (DTI8-122HQ)		Diesel		7698	184	250	01.13-	■	■
16 P 250, 16 KP 250 (DTI8-122HQ)		Diesel		7698	184	250	01.13-	■	■
18 P 250, 18 KP 250 (DTI8-122HQ)		Diesel		7698	184	250	01.13-	■	■
25 P 250 (DTI8-122HQ)		Diesel		7698	184	250	01.13-	■	■
26 P 250, 26 KP 250 (DTI8-122HQ)		Diesel		7698	184	250	01.13-	■	■
13 P 280, 13 KP 280 (DTI8-122HR)		Diesel		7698	206	280	01.13-	■	■
14 P 280, 14 KP 280 (DTI8-122HR)		Diesel		7698	206	280	01.13-	■	■
16 P 280, 16 KP 280 (DTI8-122HR)		Diesel		7698	206	280	01.13-	■	■
18 P 280, 18 KP 280 (DTI8-122HR)		Diesel		7698	206	280	01.13-	■	■
25 P 280 (DTI8-122HR)		Diesel		7698	206	280	01.13-	■	■
26 P 280, 26 KP 280 (DTI8-122HR)		Diesel		7698	206	280	01.13-	■	■
18 P 320, 18 KP 320 (DTI8-122HS)		Diesel		7698	235	320	01.13-	■	■
25 P 320 (DTI8-122HS)		Diesel		7698	235	320	01.13-	■	■
26 P 320, 26 KP 320 (DTI8-122HS)		Diesel		7698	235	320	01.13-	■	■
<b>D II 01.13-</b>					<b>Truck Tractor</b>				
18 T 280 (DTI8-122HR)		Diesel		7698	206	280	01.13-	■	■
18 T 320 (DTI8-122HS)		Diesel		7698	235	320	01.13-	■	■
<b>Midlum 01.00-</b>					<b>Dump Truck</b>				
135.08/B,150.08/B (MIDR 04.02.26 A/4)		Diesel		4120	100	136	01.00-	■	■
135.08/B,150.08/B (MIDR 04.02.26 B/4)		Diesel		4120	100	136	01.00-	■	■
135.10/B,150.10/B (MIDR 04.02.26 A/4)		Diesel		4120	100	136	01.00-	■	■
135.10/B,150.10/B (MIDR 04.02.26 B/4)		Diesel		4120	100	136	01.00-	■	■
180.08/B (MIDR 06.02.26 V/4)		Diesel		6177	132	180	01.00-	■	■
180.10/B (MIDR 06.02.26 V/4)		Diesel		6177	132	180	01.00-	■	■
210.08/B (MIDR 06.02.26 W/4)		Diesel		6177	154	209	01.00-	■	■
210.10/B (MIDR 06.02.26 W/4)		Diesel		6177	154	209	01.00-	■	■
210.12/C (MIDR 06.02.26 W/4)		Diesel		6177	154	209	01.00-	■	■
250.12/C (MIDR 06.02.26 Y/41)		Diesel		6177	184	250	01.00-	■	■
<b>Midlum 01.00-</b>					<b>Municipal Vehicle</b>				
180.12 (DCI 4C)		Diesel		4120	128	174	10.01-	■	■
220.15 (DCI 6W)		Diesel		6177	158	215	10.01-	■	■
<b>Midlum 01.00-</b>					<b>Platform/Chassis</b>				
135.08/B,150.08/B (MIDR 04.02.26 A/4)		Diesel		4120	100	136	01.00-	■	■
135.08/B,150.08/B (MIDR 04.02.26 B/4)		Diesel		4120	100	136	01.00-	■	■
135.09/B,150.09/B (MIDR 04.02.26 A/4)		Diesel		4120	100	136	01.00-	■	■
135.09/B,150.09/B (MIDR 04.02.26 B/4)		Diesel		4120	100	136	01.00-	■	■
135.10/B,150.10/B (MIDR 04.02.26 A/4)		Diesel		4120	100	136	01.00-	■	■
135.10/B,150.10/B (MIDR 04.02.26 B/4)		Diesel		4120	100	136	01.00-	■	■

# LISTA DE APLICACIONES - BUYERS GUIDE

150.12/B (DCI 4B)	Diesel	4120	110	150	01.00-	■	■
150.12/B (MIDR 04.02.26 B/4)	Diesel	4120	110	150	01.00-	■	■
150.08/B (DCI 4B)	Diesel	4120	112	152	10.01-	■	■
150.10/B (DCI 4B)	Diesel	4120	112	152	10.01-	■	■
180.08/B (DCI 4C)	Diesel	4120	128	174	10.01-	■	■
180.10/B (DCI 4C)	Diesel	4120	128	174	10.01-	■	■
180.12/B, 180.12/C (DCI 4C)	Diesel	4120	128	174	10.01-	■	■
180.08/B (MIDR 06.02.26 V/4)	Diesel	6177	132	180	01.00-	■	■
180.09/B (MIDR 06.02.26 V/4)	Diesel	6177	132	180	01.00-	■	■
180.10/B (MIDR 06.02.26 V/4)	Diesel	6177	132	180	01.00-	■	■
180.12/B (MIDR 06.02.26 V/4)	Diesel	6177	132	180	01.00-	■	■
210.08/B, 220.08/B (DCI 6W)	Diesel	6177	154	209	01.00-	■	■
210.08/B, 220.08/B (MIDR 06.02.26 W/4)	Diesel	6177	154	209	01.00-	■	■
210.09/B (MIDR 06.02.26 W/4)	Diesel	6177	154	209	01.00-	■	■
210.10/B, 220.10/B (DCI 6W)	Diesel	6177	154	209	01.00-	■	■
210.10/B, 220.10/B (MIDR 06.02.26 W/4)	Diesel	6177	154	209	01.00-	■	■
210.12/C, 220.12/C (DCI 6W)	Diesel	6177	154	209	01.00-	■	■
210.12/C, 220.12/C (MIDR 06.02.26 W/4)	Diesel	6177	154	209	01.00-	■	■
220.12 (DCI 6W)	Diesel	6177	158	215	10.01-	■	■
220.18/D (DCI 6W)	Diesel	6177	158	215	10.01-	■	■
250.12/C (MIDR 06.02.26 Y/41)	Diesel	6177	184	250	01.00-	■	■
270.12/C (DCI 6A)	Diesel	6177	195	265	10.01-	■	■