

# LISTA DE APLICACIONES - BUYERS GUIDE

## 151280

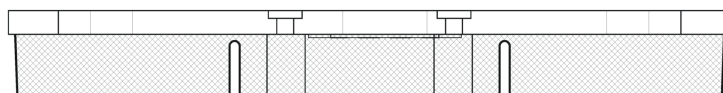
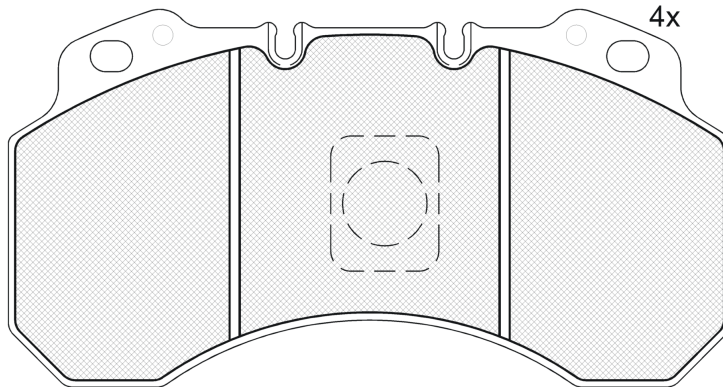


8 424073 058980

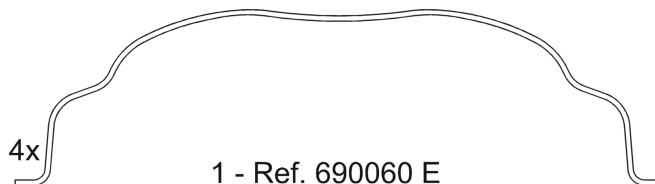
Qty: 660

Weight: 7.620

O.E.M.	MAKE
5001 833 104	RENAULT TRUCKS
5001 857 615	RENAULT TRUCKS
6832 1585	RENAULT TRUCKS



## 151280-067



1 - Ref. 690060 E

## 151280



90R-01178/677



Lucas-Girling C-LISA

213.85x111.85x25.25

**WVA**

29100

**MAKE**

RENAULT TRUCKS



Trac.	CC	Kw	CV
-------	----	----	----



Front / Rear

### RENAULT TRUCKS

#### Midliner 10.82-01.00

#### Dump Truck

M 180.13/C (MIDR 06.02.26 V/41)	Diesel	6180	132	180	05.96-01.00	■
M 210.13/C (MIDR 06.02.26 W)	Diesel	6180	151	205	05.92-01.00	■
M 210.13/C (MIDR 06.02.26 W/41)	Diesel	6180	151	205	05.92-01.00	■
M 250.13/C (MIDR 06.02.26 Y/41)	Diesel	6180	184	250	05.96-01.00	■

#### Midliner 10.82-01.00

#### Platform/Chassis

M 120.12	Diesel	4995	82	111	10.82-	■
M 120.13	Diesel	4995	82	111	10.82-	■
M 150.12/C (MIDR 06.02.26 U/4)	Diesel	6180	110	150	05.96-01.00	■
M 150.13/C (MIDR 06.02.26 U/4)	Diesel	6180	110	150	05.96-01.00	■
M 180.12/C (MIDR 06.02.26 V/41)	Diesel	6180	132	180	05.96-01.00	■
M 180.13/C (MIDR 06.02.26 V/41)	Diesel	6180	132	180	05.96-01.00	■
M 210.12/C (MIDR 06.02.26 W)	Diesel	6180	151	205	05.92-01.00	■
M 210.12/C (MIDR 06.02.26 W/41)	Diesel	6180	151	205	05.92-01.00	■
M 210.13/C (MIDR 06.02.26 W)	Diesel	6180	151	205	05.92-01.00	■
M 210.13/C (MIDR 06.02.26 W/41)	Diesel	6180	151	205	05.92-01.00	■
M 250.13/C (MIDR 06.02.26 Y/41)	Diesel	6180	184	250	05.96-01.00	■
M 250.15/C, M 250.15/D (MIDR 06.02.26 Y/41)	Diesel	6180	184	250	05.96-01.00	■

#### Midlum 01.00-

#### Dump Truck

210.12/C (MIDR 06.02.26 W/4)	Diesel	6177	154	209	01.00-	■ ■
210.13/C (MIDR 06.02.26 W/4)	Diesel	6177	154	209	01.00-	■ ■
210.15/C (MIDR 06.02.26 W/4)	Diesel	6177	154	209	01.00-	■ ■
250.12/C (MIDR 06.02.26 Y/41)	Diesel	6177	184	250	01.00-	■ ■

# LISTA DE APLICACIONES - BUYERS GUIDE

250.13/C (MIDR 06.02.26 Y/41)	Diesel		6177	184	250	01.00-	■	■
250.15/C (MIDR 06.02.26 Y/41)	Diesel		6177	184	250	01.00-	■	■
<b>Midlum 01.00-</b>				<b>Platform/Chassis</b>				
210.12/C, 220.12/C (DCI 6W)	Diesel		6177	154	209	01.00-	■	■
210.12/C, 220.12/C (MIDR 06.02.26 W/4)	Diesel		6177	154	209	01.00-	■	■
210.13/C, 220.13/C, 220.13/D (DCI 6W)	Diesel		6177	154	209	01.00-	■	■
210.13/C, 220.13/C, 220.13/D (MIDR 06.02.26 W/4)	Diesel		6177	154	209	01.00-	■	■
210.14/C, 220.14/C, 220.14/D (DCI 6W)	Diesel		6177	154	209	01.00-	■	■
210.14/C, 220.14/C, 220.14/D (MIDR 06.02.26 W/4)	Diesel		6177	154	209	01.00-	■	■
210.15/C (MIDR 06.02.26 W/4)	Diesel		6177	154	209	01.00-	■	■
210.16/C, 220.16/C, 22.16/D (DCI 6W)	Diesel		6177	154	209	01.00-	■	■
210.16/C, 220.16/C, 22.16/D (MIDR 06.02.26 W/4)	Diesel		6177	154	209	01.00-	■	■
250.12/C (MIDR 06.02.26 Y/41)	Diesel		6177	184	250	01.00-	■	■
250.13/C (MIDR 06.02.26 Y/41)	Diesel		6177	184	250	01.00-	■	■
250.14/C (MIDR 06.02.26 Y/41)	Diesel		6177	184	250	01.00-	■	■
250.15/C (MIDR 06.02.26 Y/41)	Diesel		6177	184	250	01.00-	■	■
250.16/C (MIDR 06.02.26 Y/41)	Diesel		6177	184	250	01.00-	■	■
<b>Midlum 01.00-</b>				<b>Truck Tractor</b>				
250.16/CT (MIDR 06.02.26 Y/41)	Diesel		6177	184	250	01.00-	■	■