

# LISTA DE APLICACIONES - BUYERS GUIDE

## 151623

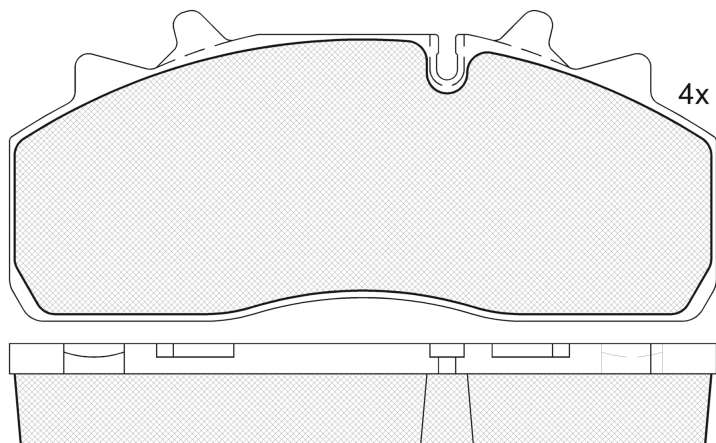


8 424073 088871

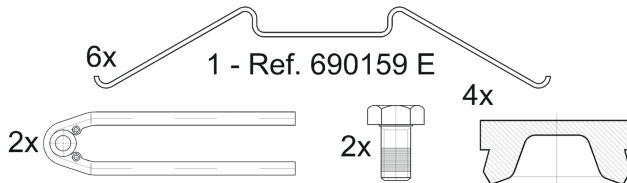
Qty: 660

Weight: 7.835

| O.E.M.             | MAKE           |
|--------------------|----------------|
| 1 218 2192         | SAF            |
| 1 299 9737         | SAF            |
| 162 8064           | DAF            |
| 2114 3305 7008 000 | RENAULT TRUCKS |
| 3 057 0080 00      | SAF            |
| 3 057 0080 01      | SAF            |
| 659742-1           | DENNIS         |

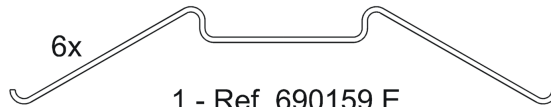


## 151623-066



1 - Ref. 690159 E

## 151623-067



1 - Ref. 690159 E

## 151623



90R-01178/945



Perrot-Wabco PAN 19-1

210.2x92.3x30

| WVA                          | FMSI       |
|------------------------------|------------|
| 29126                        | D1438-8556 |
| 29159                        |            |
| MAKE                         |            |
| DAF                          |            |
| DENNIS                       |            |
| RENAULT TRUCKS               |            |
| SAF                          |            |
| TRENKAMP&GEHLE GMBH (GIGANT) |            |



| Trac. | CC | Kw | CV |
|-------|----|----|----|
|-------|----|----|----|



Front / Rear

DAF

LF 05.13-

Dump Truck

| FA 220 (PX-7 164) | Diesel | 6690 | 162 | 220 | 05.13- | ■ | ■ |
|-------------------|--------|------|-----|-----|--------|---|---|
| FA 250 (PX-7 186) | Diesel | 6690 | 187 | 254 | 05.13- | ■ | ■ |
| FA 280 (PX-7 208) | Diesel | 6690 | 209 | 284 | 05.13- | ■ | ■ |
| FA 310 (PX-7 231) | Diesel | 6690 | 231 | 314 | 05.13- | ■ | ■ |

LF 05.13-

Platform/Chassis

| FA 150 (PX-5 112) | Diesel | 4460 | 112 | 152 | 05.13- | ■ | ■ |
|-------------------|--------|------|-----|-----|--------|---|---|
| FA 180 (PX-5 135) | Diesel | 4460 | 135 | 182 | 05.13- | ■ | ■ |
| FA 180 (PX-5 135) | Diesel | 4460 | 135 | 182 | 05.13- | ■ | ■ |
| FA 180 (PX-5 135) | Diesel | 4460 | 135 | 182 | 05.13- | ■ | ■ |
| FA 180 (PX-5 135) | Diesel | 4460 | 135 | 182 | 05.13- | ■ | ■ |
| FA 180 (PX-5 135) | Diesel | 4460 | 135 | 182 | 05.13- | ■ | ■ |
| FA 210 (PX-5 157) | Diesel | 4460 | 157 | 212 | 05.13- | ■ | ■ |
| FA 210 (PX-5 157) | Diesel | 4460 | 157 | 212 | 05.13- | ■ | ■ |
| FA 210 (PX-5 157) | Diesel | 4460 | 157 | 212 | 05.13- | ■ | ■ |
| FA 210 (PX-5 157) | Diesel | 4460 | 157 | 212 | 05.13- | ■ | ■ |
| FA 210 (PX-5 157) | Diesel | 4460 | 157 | 212 | 05.13- | ■ | ■ |
| FA 220 (PX-7 164) | Diesel | 6690 | 162 | 220 | 05.13- | ■ | ■ |
| FA 220 (PX-7 164) | Diesel | 6690 | 162 | 220 | 05.13- | ■ | ■ |
| FA 220 (PX-7 172) | Diesel | 6690 | 162 | 220 | 05.13- | ■ | ■ |
| FA 220 (PX-7 164) | Diesel | 6690 | 162 | 220 | 05.13- | ■ | ■ |
| FA 220 (PX-7 164) | Diesel | 6690 | 162 | 220 | 05.13- | ■ | ■ |
| FA 220 (PX-7 164) | Diesel | 6690 | 162 | 220 | 05.13- | ■ | ■ |
| FA 220 (PX-7 164) | Diesel | 6690 | 162 | 220 | 05.13- | ■ | ■ |

# LISTA DE APLICACIONES - BUYERS GUIDE

|                       |  |        |  |      |                          |     |        |   |   |
|-----------------------|--|--------|--|------|--------------------------|-----|--------|---|---|
| FA 250 (PX-7 186)     |  | Diesel |  | 6690 | 187                      | 254 | 05.13- | ■ | ■ |
| FA 250 (PX-7 194)     |  | Diesel |  | 6690 | 187                      | 254 | 05.13- | ■ | ■ |
| FA 250 (PX-7 186)     |  | Diesel |  | 6690 | 187                      | 254 | 05.13- | ■ | ■ |
| FA 250 (PX-7 186)     |  | Diesel |  | 6690 | 187                      | 254 | 05.13- | ■ | ■ |
| FA 250 (PX-7 186)     |  | Diesel |  | 6690 | 187                      | 254 | 05.13- | ■ | ■ |
| FA 250 (PX-7 186)     |  | Diesel |  | 6690 | 187                      | 254 | 05.13- | ■ | ■ |
| FA 280 (PX-7 208)     |  | Diesel |  | 6690 | 209                      | 284 | 05.13- | ■ | ■ |
| FA 280 (PX-7 217)     |  | Diesel |  | 6690 | 209                      | 284 | 05.13- | ■ | ■ |
| FA 280 (PX-7 208)     |  | Diesel |  | 6690 | 209                      | 284 | 05.13- | ■ | ■ |
| FA 280 (PX-7 208)     |  | Diesel |  | 6690 | 209                      | 284 | 05.13- | ■ | ■ |
| FA 310 (PX-7 231)     |  | Diesel |  | 6690 | 231                      | 314 | 05.13- | ■ | ■ |
| FA 310 (PX-7 239)     |  | Diesel |  | 6690 | 231                      | 314 | 05.13- | ■ | ■ |
| <b>LF 05.13-</b>      |  |        |  |      | <b>Truck Tractor</b>     |     |        |   |   |
| FT 220                |  | Diesel |  | 6690 | 162                      | 220 | 05.13- | ■ | ■ |
| FT 250                |  | Diesel |  | 6690 | 187                      | 254 | 05.13- | ■ | ■ |
| FT 280                |  | Diesel |  | 6690 | 209                      | 284 | 05.13- | ■ | ■ |
| <b>LF 55 01.01-</b>   |  |        |  |      | <b>Municipal Vehicle</b> |     |        |   |   |
| FA 55.180             |  | Diesel |  | 4461 | 136                      | 185 | 05.06- | ■ | ■ |
| FA 55.210             |  | Diesel |  | 4461 | 152                      | 207 | 01.09- | ■ | ■ |
| FA 55.220             |  | Diesel |  | 6691 | 165                      | 224 | 05.06- | ■ | ■ |
| <b>LF 55 01.01-</b>   |  |        |  |      | <b>Platform/Chassis</b>  |     |        |   |   |
| FA 55.170 (BE 123 C)  |  | Diesel |  | 3920 | 123                      | 167 | 01.01- | ■ | ■ |
| FA 55.180 (FR 136 S1) |  | Diesel |  | 4461 | 136                      | 185 | 05.06- | ■ | ■ |
| FA 55.180 (FR 136 S1) |  | Diesel |  | 4461 | 136                      | 185 | 05.06- | ■ | ■ |
| FA 55.180             |  | Diesel |  | 4461 | 136                      | 185 | 05.06- | ■ | ■ |
| FA 55.180             |  | Diesel |  | 4461 | 136                      | 185 | 05.06- | ■ | ■ |
| FA 55.180             |  | Diesel |  | 4461 | 136                      | 185 | 05.06- | ■ | ■ |
| FA 55.210             |  | Diesel |  | 4461 | 152                      | 207 | 01.09- | ■ | ■ |
| FA 55.180 (CE 136 C)  |  | Diesel |  | 5880 | 136                      | 185 | 01.01- | ■ | ■ |
| FA 55.180 (CE 136 C)  |  | Diesel |  | 5880 | 136                      | 185 | 01.01- | ■ | ■ |
| FA 55.220 (CE 162 C)  |  | Diesel |  | 5880 | 162                      | 220 | 01.01- | ■ | ■ |
| FA 55.220 (CE 162 C)  |  | Diesel |  | 5880 | 162                      | 220 | 01.01- | ■ | ■ |
| FA 55.250 (CE 184 C)  |  | Diesel |  | 5880 | 184                      | 250 | 01.01- | ■ | ■ |
| FA 55.220 (GR 165 S1) |  | Diesel |  | 6691 | 165                      | 224 | 05.06- | ■ | ■ |
| FA 55.220 (GR 165 S1) |  | Diesel |  | 6691 | 165                      | 224 | 05.06- | ■ | ■ |
| FA 55.220             |  | Diesel |  | 6691 | 165                      | 224 | 05.06- | ■ | ■ |
| FA 55.220 (GR 165 S1) |  | Diesel |  | 6691 | 165                      | 224 | 05.06- | ■ | ■ |
| FA 55.250 (GR 184 S1) |  | Diesel |  | 6691 | 184                      | 250 | 05.06- | ■ | ■ |
| FA 55.250 (GR 184 S1) |  | Diesel |  | 6691 | 184                      | 250 | 05.06- | ■ | ■ |
| FA 55.250             |  | Diesel |  | 6691 | 184                      | 250 | 05.06- | ■ | ■ |
| FA 55.250             |  | Diesel |  | 6691 | 184                      | 250 | 05.06- | ■ | ■ |
| FA 55.280 (GR 210 S1) |  | Diesel |  | 6691 | 210                      | 286 | 05.06- | ■ | ■ |
| FA 55.280 (GR 210 S1) |  | Diesel |  | 6691 | 210                      | 286 | 05.06- | ■ | ■ |
| FA 55.290 (GR 210 S1) |  | Diesel |  | 6691 | 210                      | 286 | 05.06- | ■ | ■ |
| FA 55.290 (GR 210 S1) |  | Diesel |  | 6691 | 210                      | 286 | 05.06- | ■ | ■ |
| <b>LF 55 01.01-</b>   |  |        |  |      | <b>Truck Tractor</b>     |     |        |   |   |
| FT 55.180 (CE 136 C)  |  | Diesel |  | 5880 | 136                      | 185 | 01.01- | ■ | ■ |
| FT 55.220 (CE 162 C)  |  | Diesel |  | 5880 | 162                      | 220 | 01.01- | ■ | ■ |
| FT 55.250 (CE 184 C)  |  | Diesel |  | 5880 | 184                      | 250 | 01.01- | ■ | ■ |
| FT 55.220 (GR 165 S1) |  | Diesel |  | 6691 | 165                      | 224 | 05.06- | ■ | ■ |

# LISTA DE APLICACIONES - BUYERS GUIDE

|                              |        |  |      |                  |     |        |   |   |
|------------------------------|--------|--|------|------------------|-----|--------|---|---|
| FT 55.250 (GR 184 S1)        | Diesel |  | 6691 | 184              | 250 | 05.06- | ■ | ■ |
| FT 55.280 (GR 210 S1)        | Diesel |  | 6691 | 210              | 286 | 05.06- | ■ | ■ |
| FT 55.290 (GR 210 S1)        | Diesel |  | 6691 | 210              | 286 | 05.06- | ■ | ■ |
| DENNIS                       |        |  |      |                  |     |        |   |   |
| ENVIRO LINE 01.02-           |        |  |      | Bus              |     |        |   |   |
| Llanta 19.5" (PAN 19-1)      | Diesel |  |      |                  |     | 01.02- | ■ | ■ |
| RENAULT TRUCKS               |        |  |      |                  |     |        |   |   |
| Midlum 01.00-                |        |  |      | Platform/Chassis |     |        |   |   |
| 220.12 (DCI 6W)              | Diesel |  | 6177 | 158              | 215 | 10.01- | ■ | ■ |
| 220.14 (DCI 6W)              | Diesel |  | 6177 | 158              | 215 | 10.01- | ■ | ■ |
| 220.16 (DCI 6W)              | Diesel |  | 6177 | 158              | 215 | 10.01- | ■ | ■ |
| SAF                          |        |  |      |                  |     |        |   |   |
| SK 02.98-                    |        |  |      | Trailer Axle     |     |        |   |   |
| SKRZ 11019 K                 |        |  |      |                  |     | 02.98- | ■ |   |
| SKRZ 9019 K                  |        |  |      |                  |     | 02.98- | ■ |   |
| SKRB                         |        |  |      | Trailer Axle     |     |        |   |   |
| SKRB 9019 K                  |        |  |      |                  |     | 01.53- | ■ |   |
| SKRB 9019 W                  |        |  |      |                  |     | 01.53- | ■ |   |
| SKRB 9022 H                  |        |  |      |                  |     | 01.53- | ■ |   |
| SKRS 12.92-                  |        |  |      | Trailer Axle     |     |        |   |   |
| SKRS 11019 K                 |        |  |      |                  |     | 12.92- | ■ |   |
| SKRS 9019 K                  |        |  |      |                  |     | 12.92- | ■ |   |
| TRENKAMP&GEHLE GMBH (GIGANT) |        |  |      |                  |     |        |   |   |
| Protec                       |        |  |      | Trailer Axle     |     |        |   |   |
| DH6 10008 3745               |        |  |      |                  |     | 01.01- | ■ |   |
| DNH6 10008 3745              |        |  |      |                  |     | 01.00- | ■ |   |