

LISTA DE APLICACIONES - BUYERS GUIDE

181627

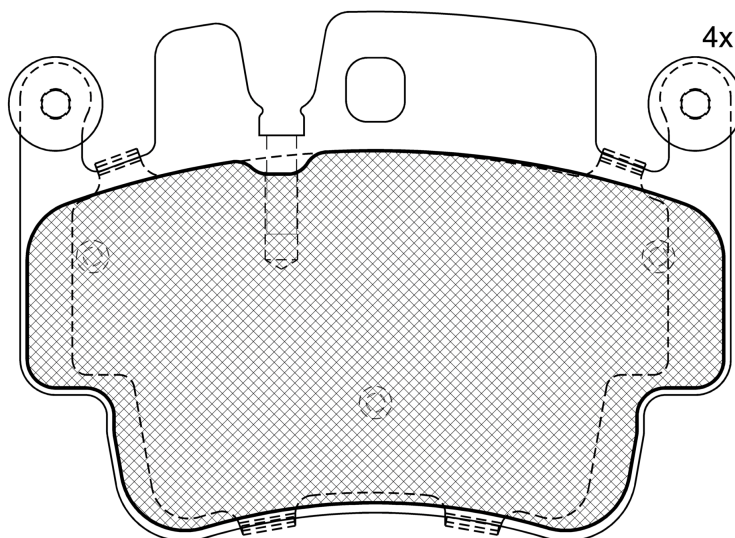


8 424073 088987

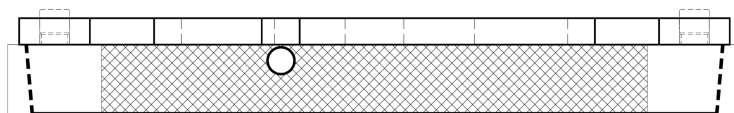
Qty: 300

Weight: 2.230

O.E.M.	MAKE
996 351 930 14	PORSCHE
996 351 930 15	PORSCHE
996 351 939 14	PORSCHE
996 351 939 15	PORSCHE
996 351 939 16	PORSCHE
996 351 947 00	PORSCHE
996 351 947 01	PORSCHE
996 351 980 00	PORSCHE
996 352 930 91	PORSCHE
996 352 948 90	PORSCHE
996 352 949 02	PORSCHE
996 352 949 03	PORSCHE
996 352 949 30	PORSCHE
997 351 948 00	PORSCHE
997 351 948 01	PORSCHE



Loose Shim



181627

E 9 90R-01111/1054



Brembo

125.1x90.4x16.9

WVA	FMSI
23329	D917-7798
MAKE	
PORSCHE	



Trac.	CC	Kw	CV
-------	----	----	----



Front / Rear

PORSCHE

911 (996) 08.97-08.05

Convertible (Sports car-S Segment)

Model	Year	Engine	Drivetrain	CC	Kw	CV	Period	Application
3.4 Carrera (M 96.01)		Gasolina	RWD	3387	221	301	02.98-09.01	■
3.4 Carrera (M 96.04)		Gasolina	RWD	3387	221	301	02.98-09.01	■
3.4 Carrera 4 (M 96.02)		Gasolina	4WD	3387	221	301	02.98-09.01	■
3.4 Carrera 4 (M 96.04)		Gasolina	4WD	3387	221	301	02.98-09.01	■
3.4 Carrera (M 96.02)		Gasolina	RWD	3387	235	320	08.97-07.99	■
3.4 Carrera 4 (M 96.02)		Gasolina	4WD	3387	235	320	08.97-07.99	■
3.6 Carrera (M 96.03)		Gasolina	RWD	3596	235	320	10.01-08.05	■
3.6 Carrera (M 96.05)	450, ceramic brakes	Gasolina	RWD	3596	235	320	04.05-07.05	■
3.6 Carrera 4 (M 96.03)		Gasolina	4WD	3596	235	320	10.01-08.05	■
3.6 Carrera (M 96.05)	450, ceramic brakes	Gasolina	RWD	3596	239	325	04.05-12.08	■
3.6 Carrera 4 (M 96.05)		Gasolina	4WD	3596	239	325	04.05-12.08	■
3.6 Carrera 4S (M 96.03)		Gasolina	4WD	3596	254	345	06.02-08.05	■
3.6 Carrera 4S (M 96.03)	01/03-	Gasolina	4WD	3596	254	345	06.02-08.05	■
3.6 Carrera S (M 96.03)		Gasolina	RWD	3596	254	345	06.02-08.05	■
3.6 Carrera S (M 96.03)	01/03-	Gasolina	RWD	3596	254	345	06.02-08.05	■
3.6 Turbo 4 (M 96.70)		Gasolina	4WD	3600	309	420	10.03-08.05	■
3.6 Turbo 4 (M 96.70)	450, ceramic brakes	Gasolina	4WD	3600	309	420	10.03-08.05	■
3.6 S (M 96.70)		Gasolina	RWD	3600	331	450	08.04-08.05	■
3.6 S (M 96.70)	450, ceramic brakes	Gasolina	RWD	3600	331	450	08.04-08.05	■
3.6 Turbo 4S (M 96.70)		Gasolina	4WD	3600	331	450	10.03-08.05	■
3.6 Turbo 4S (M 96.70)	450, ceramic brakes	Gasolina	4WD	3600	331	450	10.03-08.05	■
3.6 Carrera (MA1.02)	450, ceramic brakes	Gasolina	RWD	3614	254	345	06.08-12.11	■
3.6 Carrera 4 (MA1.02)	450, ceramic brakes	Gasolina	4WD	3614	254	345	06.08-12.12	■

LISTA DE APLICACIONES - BUYERS GUIDE

3.8 Carrera 4S (MA1.01)	450, ceramic brakes	Gasolina	4WD	3800	283	385	06.08-12.12	■	
3.8 Carrera S (MA1.01)	450, ceramic brakes	Gasolina	RWD	3800	283	385	06.08-12.11	■	
3.8 Carrera 4S / 4 GTS (MA1.01)	450, ceramic brakes	Gasolina	4WD	3800	300	408	06.09-12.12	■	
3.8 Carrera S / GTS (MA1.01)	450, ceramic brakes	Gasolina	RWD	3800	300	408	06.09-12.11	■	
3.8 Turbo (MA1.70)	450, ceramic brakes	Gasolina	4WD	3800	368	500	09.09-12.12	■	
3.8 Turbo S (MA1.70)	450, ceramic brakes	Gasolina	4WD	3800	390	530	02.10-12.12	■	
3.8 Carrera 4S (M 97.01)	450, ceramic brakes	Gasolina	4WD	3824	261	355	04.05-12.08	■	
3.8 Carrera S (M 97.01)		Gasolina	RWD	3824	261	355	04.05-12.08		■
3.8 Carrera S (M 97.01)	450, ceramic brakes	Gasolina	RWD	3824	261	355	04.05-12.08	■	
3.8 Carrera 4S (M 97.01)	ceramic brakes	Gasolina	4WD	3824	264	359	04.05-12.10	■	
3.8 Carrera 4S (M 97.01S)		Gasolina	4WD	3824	280	381	08.05-12.08		■
3.8 Carrera 4S (M 97.01S)	450, ceramic brakes	Gasolina	4WD	3824	280	381	08.05-12.08	■	
3.8 Carrera S (M 97.01S)		Gasolina	RWD	3824	280	381	08.05-12.08		■
3.8 Carrera S (M 97.01S)	450, ceramic brakes	Gasolina	RWD	3824	280	381	08.05-12.08	■	
911 (996) 08.97-09.05							Coupe (Sports car-S Segment)		
3.4 Carrera (M 96.01)		Gasolina	RWD	3387	221	301	08.97-07.01	■	
3.4 Carrera (M 96.04)		Gasolina	RWD	3387	221	301	08.97-07.01	■	
3.4 Carrera 4 (M 96.01)		Gasolina	4WD	3387	221	301	08.97-07.01	■	
3.4 Carrera 4 (M 96.04)		Gasolina	4WD	3387	221	301	08.97-07.01	■	
3.4 Carrera (M 96.02)		Gasolina	RWD	3387	235	320	08.97-07.99	■	
3.4 Carrera 4 (M 96.02)		Gasolina	4WD	3387	235	320	09.97-07.99	■	
3.6 GT2	01/99-	Gasolina	FWD	3595	320	435	08.97-		■
3.6 GT2	01/99-	Gasolina	FWD	3595	340	462	08.97-		■
3.6 Carrera (M 96.03)		Gasolina	RWD	3596	235	320	10.01-08.04	■	
3.6 Carrera (M 96.05)	450, ceramic brakes	Gasolina	RWD	3596	235	320	08.04-07.05	■	
3.6 Carrera 4 (M 96.03)		Gasolina	4WD	3596	235	320	10.01-08.04	■	
3.6 Carrera (M 96.05)	450, ceramic brakes	Gasolina	RWD	3596	239	325	07.04-12.08	■	
3.6 Carrera 4 (M 96.05)		Gasolina	4WD	3596	239	325	07.04-12.08	■	
3.6 Carrera 4S (M 96.03)		Gasolina	4WD	3596	254	345	02.03-07.04		■
3.6 Carrera S (M 96.03)		Gasolina	RWD	3596	254	345	02.03-08.05	■	■
3.6 GT3 (M 96.76)	01/00-	Gasolina	RWD	3600	265	360	03.99-07.02		■
3.6 GT3 (M 96.79)		Gasolina	RWD	3600	280	381	03.03-09.05		■
3.6 Turbo 4 (M 96.70)		Gasolina	4WD	3600	309	420	06.00-08.05		■
3.6 Turbo 4 (M 96.70)	450, ceramic brakes	Gasolina	4WD	3600	309	420	06.00-08.05	■	
3.6 S (M 96.70)		Gasolina	RWD	3600	331	450	08.04-08.05		■
3.6 Turbo 4S (M 96.70)		Gasolina	4WD	3600	331	450	02.03-08.05		■
3.6 Turbo 4S (M 96.70)	450, ceramic brakes	Gasolina	4WD	3600	331	450	02.03-08.05	■	
3.6 GT2 (M 96.70)	M449	Gasolina	RWD	3600	340	462	04.01-08.05		■
3.6 GT2 (M 96.70)	M449	Gasolina	RWD	3600	355	483	10.03-08.05		■
3.6 Carrera (MA1.02)	450, ceramic brakes	Gasolina	RWD	3614	254	345	06.08-12.11	■	
3.6 Carrera 4 (MA1.02)	450, ceramic brakes	Gasolina	4WD	3614	254	345	06.08-12.12	■	
3.8 Carrera 4S (MA1.01)	450, ceramic brakes	Gasolina	4WD	3800	283	385	06.08-12.12	■	
3.8 Carrera S (MA1.01)	450, ceramic brakes	Gasolina	RWD	3800	283	385	06.08-12.11	■	
3.8 Carrera 4S / 4 GTS (MA1.01)	450, ceramic brakes	Gasolina	4WD	3800	300	408	06.09-12.12	■	
3.8 Carrera S / GTS (MA1.01)	450, ceramic brakes	Gasolina	RWD	3800	300	408	06.09-12.11	■	
3.8 Turbo (MA1.70)	450, ceramic brakes	Gasolina	4WD	3800	368	500	09.09-12.12	■	
3.8 Turbo S (MA1.70)	450, ceramic brakes	Gasolina	4WD	3800	390	530	02.10-12.12	■	
3.8 Carrera 4S (M 97.01)	450, ceramic brakes	Gasolina	4WD	3824	261	355	07.04-12.08	■	
3.8 Carrera S (M 97.01)		Gasolina	RWD	3824	261	355	07.04-12.08		■
3.8 Carrera S (M 97.01)	450, ceramic brakes	Gasolina	RWD	3824	261	355	07.04-12.08	■	
3.8 Carrera 4S (M 97.01)	ceramic brakes	Gasolina	4WD	3824	264	359	09.05-12.08	■	

LISTA DE APLICACIONES - BUYERS GUIDE

3.8 Carrera 4S (M 97.01S)		Gasolina	4WD	3824	280	381	08.05-12.08	■
3.8 Carrera 4S (M 97.01S)	450, ceramic brakes	Gasolina	4WD	3824	280	381	08.05-12.08	■
3.8 Carrera S (M 97.01S)		Gasolina	RWD	3824	280	381	08.05-12.08	■
3.8 Carrera S (M 97.01S)	450, ceramic brakes	Gasolina	RWD	3824	280	381	08.05-12.08	■
911 (996) 12.01-08.05					Targa (Sports car-S Segment)			
3.6 (M 96.03)		Gasolina	RWD	3596	235	320	12.01-08.05	■
3.6 Carrera 4 (M 96.05)	450, ceramic brakes	Gasolina	4WD	3596	239	325	07.06-12.08	■
3.6 Carrera 4 (MA1.02)	450, ceramic brakes	Gasolina	4WD	3614	254	345	10.08-12.12	■
3.8 Carrera 4S (MA1.01)	450, ceramic brakes	Gasolina	4WD	3800	283	385	10.08-12.12	■
3.8 Carrera 4S (MA1.01)	450, ceramic brakes	Gasolina	4WD	3800	300	408	08.09-05.12	■
3.8 Carrera 4S (M 97.01)	450, ceramic brakes	Gasolina	4WD	3824	261	355	07.06-12.08	■
3.8 Carrera 4S (M 97.01S)	450, ceramic brakes	Gasolina	4WD	3824	280	381	11.06-12.08	■
911 Speedster (997) 08.10-05.11					Convertible (Sports car-S Segment)			
3.8 (997.720, 997.721) (MA1.01)		Gasolina	RWD	3800	300	408	08.10-05.11	■
BOXSTER (986) 09.96-12.04					Convertible (Sports car-S Segment)			
2.7 (M 96.23)	01/03-	Gasolina	RWD	2687	168	228	07.02-12.04	■
S 3.2 (M 96.21)		Gasolina	RWD	3179	185	252	08.99-07.02	■
S 3.2 (M 96.24)		Gasolina	RWD	3179	191	260	07.02-12.04	■
S 3.2 (M 96.24)		Gasolina	RWD	3179	196	266	01.04-12.04	■
BOXSTER II (987) 06.04-12.13					Convertible (Sports car-S Segment)			
S 3.2 (M 96.26)	-12/05, 450, ceramic brakes	Gasolina	RWD	3179	206	280	11.04-12.06	■
S 3.4 (M 97.21)	450, ceramic brakes	Gasolina	RWD	3387	217	295	07.06-12.09	■
S 3.4 (M 97.22)	450, ceramic brakes	Gasolina	RWD	3387	223	303	08.08-12.09	■
S 3.4 (MA1.21)	450, ceramic brakes	Gasolina	RWD	3436	228	310	06.09-12.11	■
S 3.4 (987.760, 987.761) (MA1.21)	450, ceramic brakes	Gasolina	RWD	3436	235	320	08.10-05.12	■
BOXSTER II Spyder (987) 09.07-12.11					Convertible (Sports car-S Segment)			
3.4 RS 60 (M 97.22)	450, ceramic brakes	Gasolina	RWD	3387	223	303	09.07-12.08	■
3.4 (MA1.21)	450, ceramic brakes	Gasolina	RWD	3436	235	320	02.10-12.11	■
CARRERA GT (980) 07.03-12.06					Convertible (Sports car-S Segment)			
5.7 (M 80.01)		Gasolina	RWD	5733	450	612	07.03-12.06	■
CAYMAN (987) 11.05-12.13					Coupe (Sports car-S Segment)			
S 3.4 (M 97.21)	450, ceramic brakes	Gasolina	RWD	3387	217	295	11.05-12.09	■
S 3,4 Sport (M 97.22)	450, ceramic brakes	Gasolina	RWD	3387	223	303	08.08-12.12	■
S 3.4 (MA1.21)	450, ceramic brakes	Gasolina	RWD	3436	235	320	02.09-06.13	■
R 3.4 (MA1.21)	450, ceramic brakes	Gasolina	RWD	3436	243	330	11.10-12.12	■