

LISTA DE APLICACIONES - BUYERS GUIDE

182253

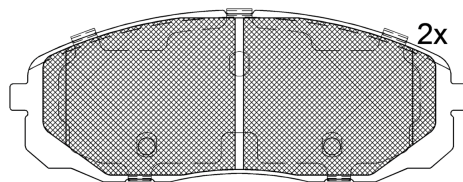


8 424073 14 1255

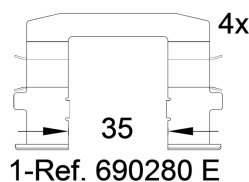
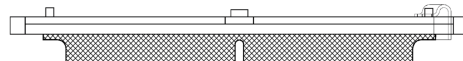
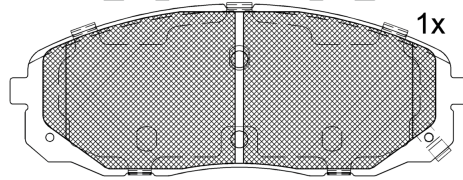
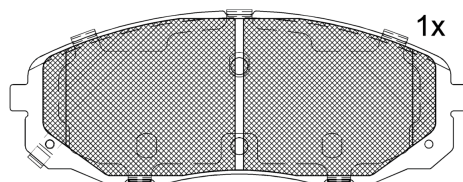
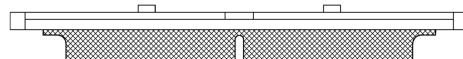
Qty: 300

Weight: 2.220

O.E.M.	MAKE
58101-A9A00	KIA
58101-A9A10	KIA
58101-A9A20	KIA



Loose Shim



1-Ref. 690280 E

182253



90R-02A0111/4680



Sumitomo

161.1x60.4x16.7

WVA	FMSI
22213	D1814-9048
22214	D2408-9048
22215	
MAKE	
KIA	



Trac.

CC

Kw

CV



Front / Rear

KIA

CARNIVAL II / GRAND CARNIVAL / SEDONA / VQ (VQ) 09.05-

MPV (Large MPV-M1 Segment)

2.2 CRDi (D4HB)	01/15-	Diesel	FWD	2199	110	150	01.10-06.15	■
2.2 CRDi (D4HB)	01/15-	Diesel	FWD	2199	143	194	01.10-06.15	■

SEDONA III / CARNIVAL III (YP) 09.14-

MPV (Large MPV-M1 Segment)

3.3 (G6DF)		Gasolina	FWD	3342	196	266	01.15-	■
3.3 (G6DF)		Gasolina	FWD	3342	199	271	01.15-	■
3.3 GDI (G6DH)		Gasolina	FWD	3342	203	276	09.14-	■
3.3 GDI (G6DH)		Gasolina	FWD	3342	206	280	09.14-	■
2.2 CRDi		Diesel	RWD	2199	140	190	07.15-	■
2.2 CRDi		Diesel	FWD	2199	145	197	07.15-	■
2.2 TD (D4HB)		Diesel	FWD	2199	147	200	07.15-	■
2.2 CRDi		Diesel	FWD	2199	149	203	07.15-	■