

# LISTA DE APLICACIONES - BUYERS GUIDE

## 182366

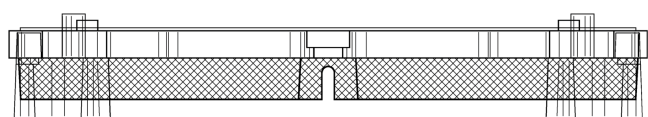
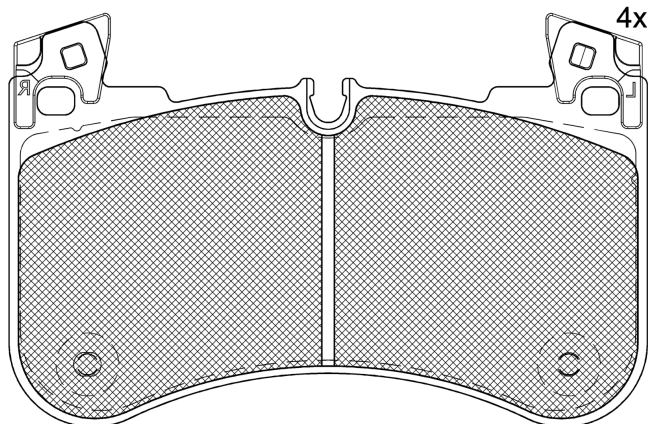


8 424073 193001

Qty: 300

Weight: 3.715

| O.E.M.    | MAKE       |
|-----------|------------|
| LR-110084 | LAND ROVER |
| LR-138646 | LAND ROVER |
| LR149626  | LAND ROVER |
| LR157174  | LAND ROVER |



## 182366

E 9 90R-02A0111/5449



Brembo

152.5x98.7x17.1

| WVA        | FMSI       |
|------------|------------|
| 20581      | D2184-9428 |
| MAKE       |            |
| LAND ROVER |            |



| Trac. | CC | Kw | CV |
|-------|----|----|----|
|-------|----|----|----|



Front / Rear

### LAND ROVER

#### DEFENDER III Sport Wagon (L663) 09.19-

#### Closed Off-Road Vehicle (Off-Road SUV-J Segment)

|                            |                                 |               |     |      |     |     |        |   |
|----------------------------|---------------------------------|---------------|-----|------|-----|-----|--------|---|
| P300 Si4 4x4 (PT204)       | Rim 19, discØ 363               | Gasolina      | 4WD | 1997 | 221 | 300 | 09.19- | ■ |
| P525 4x4                   | Rim 19, discØ 363               | Gasolina      | 4WD | 5000 | 386 | 525 | 05.21- | ■ |
| P400e Hybrid 4x4 (PT204)   | Rim 19, discØ 363, -ch L2999999 | Gasol./el éc. | 4WD | 1997 | 221 | 300 | 09.20- | ■ |
| P400e Hybrid 4x4 (PT204)   | Rim 19, discØ 363, -ch L2999999 | Gasol./el éc. | 4WD | 1997 | 297 | 404 | 09.20- | ■ |
| P300 MHEV 4x4 (AJ20P6)     | discØ 363, Rim 19               | Gasol./el éc. | 4WD | 2996 | 221 | 300 | 05.22- | ■ |
| P400 I6 MHEV 4x4 (PT306)   | Rim 19, discØ 363               | Gasol./el éc. | 4WD | 2996 | 294 | 400 | 09.19- | ■ |
| 2.0 D200 MHEV 4x4 (AJ20D4) | Rim 19, discØ 363               | Diesel/el éc. | 4WD | 1997 | 147 | 200 | 09.20- | ■ |
| D200 MHEV 4x4 (AJ20D6)     | Rim 19, discØ 363               | Diesel/el éc. | 4WD | 2997 | 147 | 200 | 09.19- | ■ |
| D250 MHEV 4x4 (AJ20D6)     | Rim 19, discØ 363               | Diesel/el éc. | 4WD | 2997 | 183 | 249 | 09.20- | ■ |
| D300 MHEV 4x4 (AJ20D6)     | Rim 19, discØ 363               | Diesel/el éc. | 4WD | 2997 | 221 | 300 | 09.20- | ■ |
| D200 SD4 4x4 (204DT)       | Rim 19, discØ 363               | Diesel        | 4WD | 1999 | 147 | 200 | 09.19- | ■ |
| D240 SD4 4x4 (204DT)       | Rim 19, discØ 363               | Diesel        | 4WD | 1999 | 177 | 241 | 09.19- | ■ |

#### DEFENDER III Van (L663) 02.20-

#### Closed Off-Road Van (Off-Road SUV-J Segment)

|                              |                                 |               |     |      |     |     |        |   |
|------------------------------|---------------------------------|---------------|-----|------|-----|-----|--------|---|
| 2.0 P300 Si4 4x4 (PT204)     | Rim 19, discØ 363               | Gasolina      | 4WD | 1997 | 221 | 300 | 02.20- | ■ |
| 2.0 P400e Hybrid 4x4 (PT204) | Rim 19, discØ 363, -ch L2999999 | Gasol./el éc. | 4WD | 1997 | 221 | 300 | 09.20- | ■ |
| 2.0 P400e Hybrid 4x4 (PT204) | Rim 19, discØ 363, -ch L2999999 | Gasol./el éc. | 4WD | 1997 | 297 | 404 | 09.20- | ■ |
| 3.0 P400 I6 MHEV 4x4 (PT306) | Rim 19, discØ 363               | Gasol./el éc. | 4WD | 2996 | 294 | 400 | 02.20- | ■ |

# LISTA DE APLICACIONES - BUYERS GUIDE

|  |   |               |     |      |   |     |             |   |
|--|---|---------------|-----|------|---|-----|-------------|---|
| 2.0 D200 MHEV 4x4 (AJ20D4)             | Rim 19, discØ 363                             | Diesel/el éc. | 4WD | 1997 | 147   | 200 | 09.20-      | ■ |
| 3.0 D200 MHEV 4x4 (AJ20D6)             | Rim 19, discØ 363, -ch L2999999, ch- M2000001 | Diesel/el éc. | 4WD | 2997 | 147   | 200 | 09.20-      | ■ |
| 3.0 D250 MHEV 4x4 (AJ20D6)             | discØ 363, Rim 19                             | Diesel/el éc. | 4WD | 2997 | 183   | 249 | 09.20-      | ■ |
| 3.0 D300 MHEV 4x4 (AJ20D6)             | discØ 363, Rim 19                             | Diesel/el éc. | 4WD | 2997 | 221   | 300 | 09.20-      | ■ |
| 2.0 D200 SD4 4x4 (204DT)               | Rim 19, discØ 363                             | Diesel        | 4WD | 1999 | 147   | 200 | 02.20-      | ■ |
| 2.0 D240 SD4 4x4 (204DT)               | Rim 19, discØ 363                             | Diesel        | 4WD | 1999 | 177   | 241 | 02.20-      | ■ |
| <b>DISCOVERY V / LR5 (L462) 09.16-</b> |   |               |     |      | <b>SUV Van (Executive SUV-J Segment)</b>    |     |             |   |
| 2.0 Si4 4x4                            | ch- JA000001, Rim 19                          | Gasolina      | 4WD | 1997 | 221   | 300 | 09.17-      | ■ |
| 3.0 SCV6 4x4                           | ch- JA000001, Rim 19                          | Gasolina      | 4WD | 2995 | 250   | 340 | 09.16-      | ■ |
| 3.0 D300 MHEV 4x4                      | ch- JA000001, Rim 19, discØ 363               | Diesel/el éc. | 4WD | 2997 | 221   | 300 | 12.20-      | ■ |
| 2.0 Td4 4x4                            | ch- JA000001, Rim 19                          | Diesel        | 4WD | 1999 | 132   | 179 | 09.16-12.18 | ■ |
| 2.0 SD4 4x4                            | ch- JA000001, Rim 19                          | Diesel        | 4WD | 1999 | 177   | 241 | 09.16-      | ■ |
| 3.0 Td6 4x4                            | ch- JA000001, Rim 19                          | Diesel        | 4WD | 2993 | 190   | 258 | 09.16-      | ■ |
| 3.0 SDV6 4x4                           | ch- JA000001, Rim 19                          | Diesel        | 4WD | 2993 | 225   | 306 | 09.18-      | ■ |
| <b>DISCOVERY V / LR5 (L462) 09.16-</b> |   |               |     |      | <b>SUV (Executive SUV-J Segment)</b>        |     |             |   |
| 2.0 Si4 4x4 (PT204)                    | ch- JA000001, Rim 19, Syst. 19"               | Gasolina      | 4WD | 1997 | 221   | 300 | 09.17-      | ■ |
| 3.0 SCV6 4x4 (306PS)                   | ch- JA000001, Rim 19                          | Gasolina      | 4WD | 2995 | 250   | 340 | 09.16-      | ■ |
| P360 MHEV 4x4                          | ch- JA000001, Rim 19, discØ 363               | Gasol./el éc. | 4WD | 2996 | 265   | 360 | 12.20-      | ■ |
| D250 MHEV 4x4                          | ch- JA000001, Rim 19, discØ 363               | Diesel/el éc. | 4WD | 2997 | 183   | 249 | 12.20-      | ■ |
| D300 MHEV 4x4                          | ch- JA000001, Rim 19, discØ 363               | Diesel/el éc. | 4WD | 2997 | 221   | 300 | 12.20-      | ■ |
| 2.0 Td4 4x4 (204DTD)                   | ch- JA000001, Rim 19                          | Diesel        | 4WD | 1999 | 132   | 180 | 09.16-      | ■ |
| 2.0 SD4 4x4 (204DTA)                   | ch- JA000001, Rim 19                          | Diesel        | 4WD | 1999 | 177   | 241 | 09.16-      | ■ |
| 3.0 D 4x4 (306DT)                      | ch- JA000001, Rim 19                          | Diesel        | 4WD | 2993 | 155   | 211 | 09.16-      | ■ |
| 3.0 D 4x4 (306DT)                      | ch- JA000001, Rim 19                          | Diesel        | 4WD | 2993 | 183   | 249 | 09.16-      | ■ |
| 3.0 Td6 4x4 (306DT)                    | ch- JA000001, Rim 19                          | Diesel        | 4WD | 2993 | 190   | 258 | 09.16-      | ■ |
| 3.0 SDV6 4x4 (306DT)                   | ch- JA000001, Rim 19, Syst. 19"               | Diesel        | 4WD | 2993 | 225   | 306 | 09.18-      | ■ |
| <b>RANGE ROVER IV (L405) 08.12-</b>    |   |               |     |      | <b>SUV (Luxury Crossover SUV-J Segment)</b> |     |             |   |
| 3.0P400 4x4 (PT306)                    | Syst. 19", Rim 19, discØ 363                  | Gasolina      | 4WD | 2996 | 294   | 400 | 07.20-      | ■ |
| 2.0 P400e Hybrid 4x4 (PT204)           | ch- JA000001, Rim 19, Syst. 19"               | Gasol./el éc. | 4WD | 1997 | 221   | 300 | 10.17-      | ■ |
| 2.0 P400e Hybrid 4x4 (PT204)           | ch- JA000001, Rim 19, Syst. 19"               | Gasol./el éc. | 4WD | 1997 | 297   | 404 | 10.17-      | ■ |
| P360 MHEV 4x4 (PT306)                  | Rim 19, discØ 363                             | Gasol./el éc. | 4WD | 2996 | 265   | 360 | 12.19-      | ■ |
| D250 MHEV 4x4 (AJ20D6)                 | Syst. 19", discØ 363                          | Diesel/el éc. | 4WD | 2997 | 183   | 249 | 07.20-      | ■ |
| D300 MHEV 4x4 (AJ20D6)                 | Rim 19, Syst. 19"                             | Diesel/el éc. | 4WD | 2997 | 221   | 300 | 07.20-      | ■ |
| D350 MHEV 4x4 (AJ20D6)                 | Rim 19, Syst. 19"                             | Diesel/el éc. | 4WD | 2997 | 258   | 351 | 07.20-      | ■ |
| D350 MHEV 4x4                          | not armoured vehicl., Rim 19, Syst. 19"       | Diesel/el éc. | 4WD | 2997 | 258   | 351 | 11.20-      | ■ |
| 3.0 TDV6 4x4 (306DT)                   | ch- JA000001, Rim 19                          | Diesel        | 4WD | 2993 | 155   | 211 | 10.13-      | ■ |
| 3.0 SDV6 4x4 (306DT)                   | ch- JA000001, Rim 19                          | Diesel        | 4WD | 2993 | 183   | 249 | 08.12-      | ■ |
| 3.0 TDV6 4x4 (306DT)                   | ch- JA000001, Rim 19                          | Diesel        | 4WD | 2993 | 190   | 258 | 08.12-      | ■ |
| 3.0 SDV6 4x4 (306DT)                   | ch- JA000001, Rim 19                          | Diesel        | 4WD | 2993 | 202   | 275 | 10.18-      | ■ |
| 3.0 SDV6 4x4 (306DT)                   | ch- JA000001, Rim 19, Syst. 19"               | Diesel        | 4WD | 2993 | 215   | 292 | 10.12-      | ■ |
| D300 4x4 (AJ20D6)                      | Syst. 19", Rim 19, discØ 363                  | Diesel        | 4WD | 2997 | 221   | 300 | 07.20-      | ■ |
| D350 4x4 (AJ20D6)                      | Syst. 19", Rim 19, discØ 363                  | Diesel        | 4WD | 2997 | 258   | 351 | 07.20-      | ■ |

# LISTA DE APLICACIONES - BUYERS GUIDE

| RANGE ROVER SPORT II (L494) 04.13- |                              |               |     |      | SUV (Luxury Crossover SUV-J Segment) |     |        |   |
|------------------------------------|------------------------------|---------------|-----|------|--------------------------------------|-----|--------|---|
| 2.0 Si4 4x4 (PT204)                | Rim 19                       | Gasolina      | 4WD | 1997 | 221                                  | 300 | 10.17- | ■ |
| 5.0 SCV8 4x4 (508PS)               | Rim 19                       | Gasolina      | 4WD | 4999 | 386                                  | 525 | 11.17- | ■ |
| 2.0 P400e PHEV 4x4 (PT204)         | Rim 19                       | Gasol./el éc. | 4WD | 1997 | 221                                  | 300 | 10.17- | ■ |
| 2.0 P400e PHEV 4x4 (PT204)         | Rim 19                       | Gasol./el éc. | 4WD | 1997 | 297                                  | 404 | 10.17- | ■ |
| 3.0 P360 MHEV 4x4 (PT306)          | Rim 19, discØ 363            | Gasol./el éc. | 4WD | 2996 | 265                                  | 360 | 06.19- | ■ |
| 3.0 P400 MHEV 4x4 (AJ20P6)         | Rim 19                       | Gasol./el éc. | 4WD | 2996 | 294                                  | 400 | 02.19- | ■ |
| 3.0 D250 MHEV 4x4 (AJ20D6)         | Rim 19, Syst. 19"            | Diesel/el éc. | 4WD | 2997 | 183                                  | 249 | 07.20- | ■ |
| 3.0 D300 MHEV 4x4 (AJ20D6)         | Rim 19, Syst. 19"            | Diesel/el éc. | 4WD | 2997 | 221                                  | 300 | 07.20- | ■ |
| 3.0 D350 MHEV 4x4 (AJ20D6)         | Rim 19, Syst. 19"            | Diesel/el éc. | 4WD | 2997 | 258                                  | 351 | 07.20- | ■ |
| 2.0 SD4 4x4 (204DTA)               | Rim 19                       | Diesel        | 4WD | 1999 | 177                                  | 241 | 08.16- | ■ |
| 3.0 SDV6 4x4 (306DT)               |                              | Diesel        | 4WD | 2993 | 225                                  | 306 | 09.14- | ■ |
| 3.0 D250 4x4 (AJ20D6)              | Syst. 19", discØ 363         | Diesel        | 4WD | 2997 | 183                                  | 249 | 07.20- | ■ |
| 3.0 D300 4x4 (AJ20D6)              | Syst. 19", Rim 19, discØ 363 | Diesel        | 4WD | 2997 | 221                                  | 300 | 07.20- | ■ |
| 3.0 D350 4x4 (AJ20D6)              | Rim 19, discØ 363            | Diesel        | 4WD | 2997 | 258                                  | 351 | 07.20- | ■ |