

# LISTA DE APLICACIONES - BUYERS GUIDE

## 182503

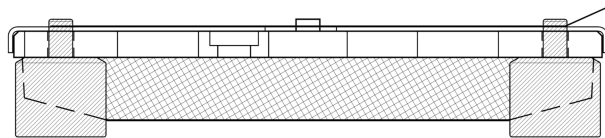
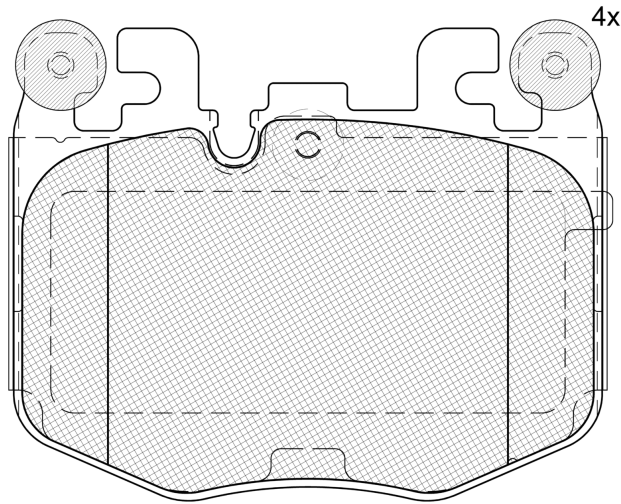


8 424073 292759

Qty: 300

Weight:

O.E.M.	MAKE
34 10 8 844 368	BMW



## 182503



**90R-IN PROJECT**



Brembo

125.65x99.2x19.6

WVA	FMSI
26776	D2480-9708
MAKE	
BMW	
BMW (BRILLIANCE)	



Trac.	CC	Kw	CV
-------	----	----	----



Front / Rear

### BMW

#### 2 Serie II (G42, G87) 08.21-

#### Coupe (Compact car-C Segment)

218i		Gasolina	RWD	1998	115	156	07.22-	■
230 i	M-sport package, discØ 348	Gasolina	RWD	1998	180	245	04.22-	■
230 i xDrive (B48 B20 B)		Gasolina	4WD	1998	190	258	08.21-	■
M240 i (B58 B30 C)		Gasolina	RWD	2998	245	333	08.22-	■
M240 i		Gasolina	RWD	2998	275	374	07.22-	■
M240 i (B58 B30 B)		Gasolina	RWD	2998	285	387	07.22-	■

#### 3 Serie VII (G20, G80, G28) 11.18-

#### Saloon (Compact executive car-D Segment)

330i	Gasolina	RWD	1998	180	245	07.22-	■
330 i xDrive	Gasolina	4WD	1998	180	245	07.22-	■

#### 3 Serie VII Touring (G21, G81) 07.19-

#### Estate (Compact executive car-D Segment)

330i	Gasolina	RWD	1998	180	245	07.19-	■
330 i xDrive	Gasolina	4WD	1998	180	245	07.19-	■

#### 4 Serie II (G22, G82) 07.20-

#### Coupe (Compact executive car-D Segment)

430 i	Gasolina	RWD	1998	180	245	07.21-	■
430 i xDrive	Gasolina	4WD	1998	180	245	03.22-	■
430 i (B48 B20 B)	Gasolina	RWD	1998	190	258	07.21-	■
430 i xDrive	Gasolina	4WD	1998	190	258	07.21-	■
M440 i Mild-Hybrid	Gasol./el éc.	RWD	2998	275	374	09.22-	■
M440 i Mild-Hybrid (B58 B30 B, JA1)	Gasol./el éc.	RWD	2998	285	387	11.20-	■
430 d Mild-Hybrid xDrive	Diesel/el éc.	4WD	2993	210	286	05.22-	■

# LISTA DE APLICACIONES - BUYERS GUIDE

<b>i4 (G26) 11.21-</b>					<b>Coupe (Compact executive car-D Segment)</b>			
eDrive35		Eléctrico	RWD		210	286	11.22-	■
<b>X3 III (G01, F97, G08) 07.17-</b>					<b>SUV (Luxury Crossover SUV-J Segment)</b>			
xDrive 30e Plug-in-Hybrid		Gasol./el éc.	4WD	1998	200	272	01.23-	■
xDrive M40 i Mild Hybrid		Gasol./el éc.	4WD	2998	265	360	08.21-	■
<b>X4 II (G02, F98) 04.18-</b>					<b>SUV (Luxury Crossover SUV-J Segment)</b>			
xDrive M40 i Mild Hybrid		Gasol./el éc.	4WD	2998	265	360	08.21-	■
<b>X5 IV (G05, F95) 08.18-</b>					<b>SUV (Luxury Crossover SUV-J Segment)</b>			
xDrive 40 i Mild-Hybrid xDrive		Gasol./el éc.	4WD	2998	280	381	04.23-	■
xDrive 40 d Mild-Hybrid		Diesel/el éc.	4WD	2993	259	352	06.23-	■
<b>X6 III (G06, F96) 08.19-</b>					<b>SUV (Luxury Crossover SUV-J Segment)</b>			
xDrive 30 i Mild-Hybrid (B48 B20 S)		Gasol./el éc.	4WD	1998	190	258	05.23-	■
xDrive 40 i Mild-Hybrid xDrive (B58 B30 C)		Gasol./el éc.	4WD	2998	250	340	04.22-	■
xDrive 40 i Mild-Hybrid xDrive		Gasol./el éc.	4WD	2998	280	381	04.23-	■
xDrive 30 d Mild-Hybrid		Diesel/el éc.	4WD	2993	164	223	04.23-	■
xDrive 40 d Mild-Hybrid		Diesel/el éc.	4WD	2993	259	352	06.23-	■
<b>BMW (BRILLIANCE)</b>								
<b>X5 (G18) 03.22-</b>					<b>SUV ()</b>			
xDrive 40 Li Mild-Hybrid (B58B30C)		Gasol./el éc.	4WD	2998	245	333	03.22-	■
xDrive 40 Li Mild-Hybrid (B58 B30 P)		Gasol./el éc.	4WD	2998	280	381	08.23-	■