

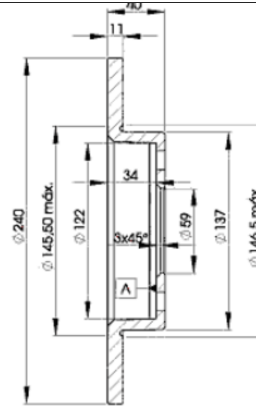
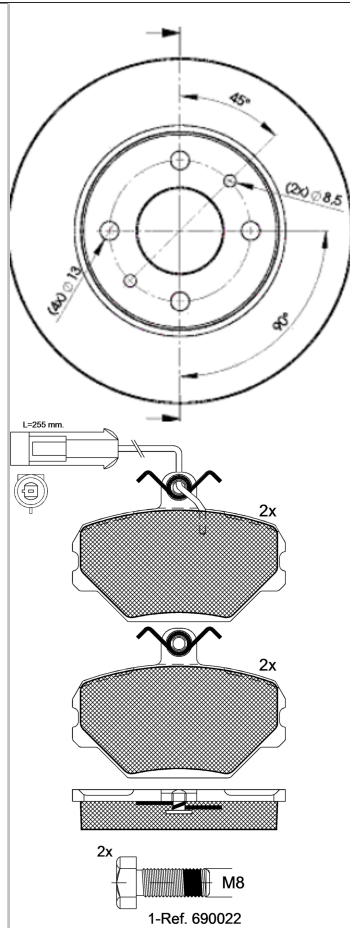
LISTA DE APLICACIONES - BUYERS GUIDE

30729-3465



8 424073 103123

Weight: 8.815



30729-3465



Lucas - Girling

90.1x63.3x17
Ø240x11x40

WVA
21100

MAKE
FIAT
LANCIA



Trac.	CC	Kw	CV
-------	----	----	----



Front / Rear

FIAT

TEMPRA (159_) 03.90-12.98

					Saloon (Large family car-D Segment)				
1.4 i.e. (159.AC, 159.AX) (159 A2.000)		Gasolina	FWD	1372	51	69	04.90-08.96	■	
1.4 i.e. (159.AC, 159.AX) (159 A2.000)		Gasolina	FWD	1372	51	69	04.90-08.96	■	
1.4 i.e. (159.AC, 159.AX) (160 A1.046)		Gasolina	FWD	1372	51	69	04.90-08.96	■	
1.4 i.e. (159.AC, 159.AX) (160 A1.046)		Gasolina	FWD	1372	51	69	04.90-08.96	■	
1.4 i.e. (159.AC, 159.AX) (836 A4.000)		Gasolina	FWD	1372	51	69	04.90-08.96	■	
1.4 i.e. (159.AC, 159.AX) (836 A4.000)		Gasolina	FWD	1372	51	69	04.90-08.96	■	
1.4 i.e. (159.AA) (159 A2.000)	01/94-	Gasolina	FWD	1372	57	78	03.91-08.96	■	
1.4 i.e. (159.AA) (159 A2.000)	01/94-	Gasolina	FWD	1372	57	78	03.91-08.96	■	
1.6 i.e. (159.AE) (159 A3.046)		Gasolina	FWD	1581	57	78	06.90-07.92	■	
1.6 i.e. (159.AE) (159 A3.046)		Gasolina	FWD	1581	57	78	06.90-07.92	■	
1.6 (159.AD) (159 A3.000)		Gasolina	FWD	1581	63	86	03.90-04.94	■	
1.6 (159.AD) (159 A3.000)		Gasolina	FWD	1581	63	86	03.90-04.94	■	
1.6 (159.AD) (159 B9.000)		Gasolina	FWD	1581	63	86	03.90-04.94	■	
1.6 (159.AD) (159 B9.000)		Gasolina	FWD	1581	63	86	03.90-04.94	■	
1.6 i.e. (159.AJ) (159 B9.000)		Gasolina	FWD	1581	63	87	06.94-08.96	■	
1.6 i.e. (159.AJ) (159 B9.000)		Gasolina	FWD	1581	63	87	06.94-08.96	■	
1.6 i.e. (159.AJ) (159 B9.000)		Gasolina	FWD	1581	66	90	06.94-08.96	■	
1.6 i.e. (159.AJ) (159 B9.000)		Gasolina	FWD	1581	66	90	06.94-08.96	■	

TEMPRA / MARENGO (159_) 04.90-07.96

					Estate Van (Large family car-D Segment)				
1.4 (159AA)		Gasolina	FWD	1372	54	73	04.91-06.93	■	
1.4 (159AA)		Gasolina	FWD	1372	54	73	04.91-06.93	■	
1.6 (159AE)		Gasolina	FWD	1581	57	77	04.91-06.93	■	

LISTA DE APLICACIONES - BUYERS GUIDE

1.6 (159AE)		Gasolina	FWD	1581	57	77	04.91-06.93	■
TEMPRA S.W (159_) 03.90-10.97					Estate (Large family car-D Segment)			
1.4 i.e. (159.AC, 159.AX) (159 A2.000)		Gasolina	FWD	1372	51	69	10.92-08.96	■
1.4 i.e. (159.AC, 159.AX) (159 A2.000)		Gasolina	FWD	1372	51	69	10.92-08.96	■
1.4 i.e. (159.AC, 159.AX) (160 A1.046)		Gasolina	FWD	1372	51	69	10.92-08.96	■
1.4 i.e. (159.AC, 159.AX) (160 A1.046)		Gasolina	FWD	1372	51	69	10.92-08.96	■
1.4 i.e. (159.AC, 159.AX) (836 A4.000)		Gasolina	FWD	1372	51	69	10.92-08.96	■
1.4 i.e. (159.AC, 159.AX) (836 A4.000)		Gasolina	FWD	1372	51	69	10.92-08.96	■
1.4 i.e. (159.AC) (159 A2.000)		Gasolina	FWD	1372	57	78	03.91-08.96	■
1.4 i.e. (159.AC) (159 A2.000)		Gasolina	FWD	1372	57	78	03.91-08.96	■
1.6 i.e. (159.AE) (159 A3.046)		Gasolina	FWD	1581	57	78	10.90-08.96	■
1.6 i.e. (159.AE) (159 A3.046)		Gasolina	FWD	1581	57	78	10.90-08.96	■
1.6 i.e. (159.AE) (835 C1.000)		Gasolina	FWD	1581	57	78	10.90-08.96	■
1.6 i.e. (159.AE) (835 C1.000)		Gasolina	FWD	1581	57	78	10.90-08.96	■
1.6 (159 A3.000)		Gasolina	FWD	1581	63	86	12.90-04.93	■
1.6 (159 A3.000)		Gasolina	FWD	1581	63	86	12.90-04.93	■
1.6 i.e. (159.AJ) (159 B9.000)		Gasolina	FWD	1581	66	90	06.94-08.96	■
1.6 i.e. (159.AJ) (159 B9.000)		Gasolina	FWD	1581	66	90	06.94-08.96	■
TIPO (160_) 07.87-10.97					Hatchback (Compact car-C Segment)			
1.1 (160.AA) (160 A3.000)		Gasolina	FWD	1108	41	56	01.88-10.91	■
1.1 (160.AA) (160 A3.000)		Gasolina	FWD	1108	41	56	01.88-10.91	■
1.4 i.e. (160.AP, 160.AD, 160.EA) (160 A1.046)		Gasolina	FWD	1372	51	70	05.89-04.95	■
1.4 i.e. (160.AP, 160.AD, 160.EA) (160 A1.046)		Gasolina	FWD	1372	51	70	05.89-04.95	■
1.4 i.e. (160.AP, 160.AD, 160.EA) (160 A1.048)		Gasolina	FWD	1372	51	70	05.89-04.95	■
1.4 i.e. (160.AP, 160.AD, 160.EA) (160 A1.048)		Gasolina	FWD	1372	51	70	05.89-04.95	■
1.4 i.e. (160.AP, 160.AD, 160.EA) (836 A4.000)		Gasolina	FWD	1372	51	70	05.89-04.95	■
1.4 i.e. (160.AP, 160.AD, 160.EA) (836 A4.000)		Gasolina	FWD	1372	51	70	05.89-04.95	■
1.4 (160.AC) (160 A1.000)		Gasolina	FWD	1372	52	71	07.87-12.89	■
1.4 (160.AC) (160 A1.000)		Gasolina	FWD	1372	52	71	07.87-12.89	■
1.4 (160.AC) (160 A1.048)		Gasolina	FWD	1372	52	71	07.87-12.89	■
1.4 (160.AC) (160 A1.048)		Gasolina	FWD	1372	52	71	07.87-12.89	■
1.4 i.e. (159 A2.000)		Gasolina	FWD	1372	57	78	05.89-04.95	■
1.4 i.e. (159 A2.000)		Gasolina	FWD	1372	57	78	05.89-04.95	■
1.6 (160.AE) (160 A2.000)		Gasolina	FWD	1581	61	83	01.88-10.91	■
1.6 (160.AE) (160 A2.000)		Gasolina	FWD	1581	61	83	01.88-10.91	■
1.6 SX DGT (159 A3.000)	01/90-	Gasolina	FWD	1581	66	90	05.89-10.95	■
1.6 SX DGT (159 A3.000)	01/90-	Gasolina	FWD	1581	66	90	05.89-10.95	■
1.6 i.e. (149 C2.046)		Gasolina	FWD	1595	66	90	02.88-05.91	■
1.6 i.e. (149 C2.046)		Gasolina	FWD	1595	66	90	02.88-05.91	■
1.7 D (160.AG) (149 B4.000)		Diesel	FWD	1697	43	58	01.88-10.94	■
1.7 D (160.AG) (149 B4.000)		Diesel	FWD	1697	43	58	01.88-10.94	■
1.7 D (160.AG) (149 B4.000)		Diesel	FWD	1697	45	61	01.88-10.95	■
1.7 D (160.AG) (149 B4.000)		Diesel	FWD	1697	45	61	01.88-10.95	■
1.9 TD (160.AW) (160 B6.046)		Diesel	FWD	1929	59	80	03.92-06.93	■
1.9 TD (160.AW) (160 B6.046)		Diesel	FWD	1929	59	80	03.92-06.93	■
1.9 TD (160.EL, 160.GL, 160.AQ, 160.EI, 160.AR) (160 A6.000)		Diesel	FWD	1929	66	90	09.90-04.95	■
1.9 TD (160.EL, 160.GL, 160.AQ, 160.EI, 160.AR) (160 A6.000)		Diesel	FWD	1929	66	90	09.90-04.95	■
1.9 TD (160.EL, 160.GL, 160.AQ, 160.EI, 160.AR) (160 A6.046)		Diesel	FWD	1929	66	90	09.90-04.95	■
1.9 TD (160.EL, 160.GL, 160.AQ, 160.EI, 160.AR) (160 A6.046)		Diesel	FWD	1929	66	90	09.90-04.95	■

LISTA DE APLICACIONES - BUYERS GUIDE

1.9 TD (160.EL, 160.GL, 160.AQ, 160.EI, 160.AR) (160 D1.000)	Diesel	FWD	1929	66	90	09.90-04.95	■
1.9 TD (160.EL, 160.GL, 160.AQ, 160.EI, 160.AR) (160 D1.000)	Diesel	FWD	1929	66	90	09.90-04.95	■

LANCIA

DEDRA (835_) 01.89-07.99				Saloon (Large family car-D Segment)			
1.6 i.e. (835AB) (835 A1.046)	Gasolina	FWD	1581	57	78	08.89-03.93	■
1.6 i.e. (835AB) (835 A1.046)	Gasolina	FWD	1581	57	78	08.89-03.93	■