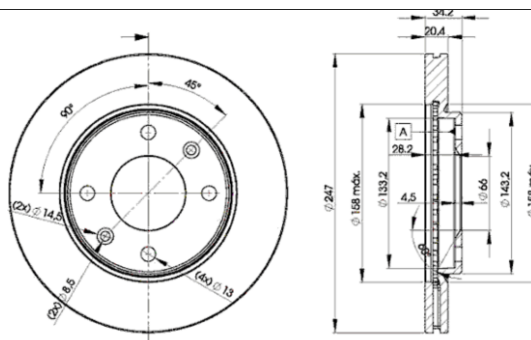


LISTA DE APLICACIONES - BUYERS GUIDE

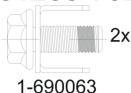
31255-4694



Weight: 10.475



181255-702



31255-4694



Bendix

130.7x47.25x18

Ø247x20.4x34.2

WVA

23205

MAKE

PEUGEOT



| Trac. | CC | Kw | CV |
|-------|----|----|----|
|-------|----|----|----|



Front / Rear

PEUGEOT

206 (2A/C) 08.98-

Hatchback (Supermini car-B Segment)

| | | | | | | | | |
|---------------------|--------|----------|-----|------|----|----|-------------|---|
| 1.4 i (KFW (TU3A)) | -12/00 | Gasolina | FWD | 1360 | 55 | 75 | 09.98-12.12 | ■ |
| 1.4 i (KFW (TU3A)) | -12/00 | Gasolina | FWD | 1360 | 55 | 75 | 09.98-12.12 | ■ |
| 1.4 i (KFW (TU3JP)) | -12/00 | Gasolina | FWD | 1360 | 55 | 75 | 09.98-12.12 | ■ |
| 1.4 i (KFW (TU3JP)) | -12/00 | Gasolina | FWD | 1360 | 55 | 75 | 09.98-12.12 | ■ |
| 1.4 i (KFX (TU3JP)) | -12/00 | Gasolina | FWD | 1360 | 55 | 75 | 09.98-12.12 | ■ |
| 1.4 i (KFX (TU3JP)) | -12/00 | Gasolina | FWD | 1360 | 55 | 75 | 09.98-12.12 | ■ |
| 1.6 i (NFZ (TU5JP)) | | Gasolina | FWD | 1587 | 65 | 89 | 09.98-12.00 | ■ |
| 1.6 i (NFZ (TU5JP)) | | Gasolina | FWD | 1587 | 65 | 89 | 09.98-12.00 | ■ |
| 1.9 D (WJY (DW8B)) | -12/00 | Diesel | FWD | 1868 | 51 | 69 | 09.98-11.01 | ■ |
| 1.9 D (WJY (DW8B)) | -12/00 | Diesel | FWD | 1868 | 51 | 69 | 09.98-11.01 | ■ |
| 1.9 D (WJZ (DW8)) | -12/00 | Diesel | FWD | 1868 | 51 | 69 | 09.98-11.01 | ■ |
| 1.9 D (WJZ (DW8)) | -12/00 | Diesel | FWD | 1868 | 51 | 69 | 09.98-11.01 | ■ |

306 (7E, N3, N5) 06.94-12.02

Estate (Compact car-C Segment)

| | | | | | | | | |
|-------------------|--|----------|-----|------|----|----|-------------|---|
| 1.6 (NFZ (TU5JP)) | | Gasolina | FWD | 1587 | 65 | 89 | 03.97-10.00 | ■ |
| 1.6 (NFZ (TU5JP)) | | Gasolina | FWD | 1587 | 65 | 89 | 03.97-10.00 | ■ |

306 (7A, 7C, N3, N5) 01.93-10.03

Hatchback (Compact car-C Segment)

| | | | | | | | | |
|-------------------|--------|----------|-----|------|----|----|-------------|---|
| 1.4 (KDX (TU3MC)) | 01/97- | Gasolina | FWD | 1360 | 55 | 75 | 04.93-07.01 | ■ |
| 1.4 (KDX (TU3MC)) | 01/97- | Gasolina | FWD | 1360 | 55 | 75 | 04.93-07.01 | ■ |
| 1.4 (KFW (TU3JP)) | 01/97- | Gasolina | FWD | 1360 | 55 | 75 | 04.93-07.01 | ■ |
| 1.4 (KFW (TU3JP)) | 01/97- | Gasolina | FWD | 1360 | 55 | 75 | 04.93-07.01 | ■ |
| 1.4 (KFX (TU3JP)) | 01/97- | Gasolina | FWD | 1360 | 55 | 75 | 04.93-07.01 | ■ |
| 1.4 (KFX (TU3JP)) | 01/97- | Gasolina | FWD | 1360 | 55 | 75 | 04.93-07.01 | ■ |

LISTA DE APLICACIONES - BUYERS GUIDE

| | | | | | | | | |
|-------------------------------------|--------|----------|-----|------|---------------------------------------|----|-------------|---|
| 1.6 (NFZ (TU5JP)) | 01/97- | Gasolina | FWD | 1587 | 65 | 89 | 05.93-10.00 | ■ |
| 1.6 (NFZ (TU5JP)) | 01/97- | Gasolina | FWD | 1587 | 65 | 89 | 05.93-10.00 | ■ |
| 1.6 (NFZ (TU5JP)) | | Gasolina | FWD | 1587 | 66 | 90 | 07.00-05.01 | ■ |
| 1.6 (NFZ (TU5JP)) | | Gasolina | FWD | 1587 | 66 | 90 | 07.00-05.01 | ■ |
| 1.6 (NFT (TU5JP)) | -12/00 | Gasolina | FWD | 1587 | 72 | 98 | 10.00-05.01 | ■ |
| 1.6 (NFT (TU5JP)) | -12/00 | Gasolina | FWD | 1587 | 72 | 98 | 10.00-05.01 | ■ |
| 306 (7B, N3, N5) 04.93-10.03 | | | | | Saloon (Compact car-C Segment) | | | |
| 1.4 SL (KDX (TU3MC)) | 01/97- | Gasolina | FWD | 1360 | 55 | 75 | 06.94-05.01 | ■ |
| 1.4 SL (KDX (TU3MC)) | 01/97- | Gasolina | FWD | 1360 | 55 | 75 | 06.94-05.01 | ■ |
| 1.4 SL (KFW (TU3JP)) | 01/97- | Gasolina | FWD | 1360 | 55 | 75 | 06.94-05.01 | ■ |
| 1.4 SL (KFW (TU3JP)) | 01/97- | Gasolina | FWD | 1360 | 55 | 75 | 06.94-05.01 | ■ |
| 1.4 SL (KFX (TU3JP)) | 01/97- | Gasolina | FWD | 1360 | 55 | 75 | 06.94-05.01 | ■ |
| 1.4 SL (KFX (TU3JP)) | 01/97- | Gasolina | FWD | 1360 | 55 | 75 | 06.94-05.01 | ■ |
| 1.6 SR (NFZ (TU5JP)) | 01/97- | Gasolina | FWD | 1587 | 65 | 89 | 06.94-10.00 | ■ |
| 1.6 SR (NFZ (TU5JP)) | 01/97- | Gasolina | FWD | 1587 | 65 | 89 | 06.94-10.00 | ■ |
| 1.6 (NFT (TU5JP)) | -12/00 | Gasolina | FWD | 1587 | 72 | 98 | 10.00-05.01 | ■ |
| 1.6 (NFT (TU5JP)) | -12/00 | Gasolina | FWD | 1587 | 72 | 98 | 10.00-05.01 | ■ |