

LISTA DE APLICACIONES - BUYERS GUIDE

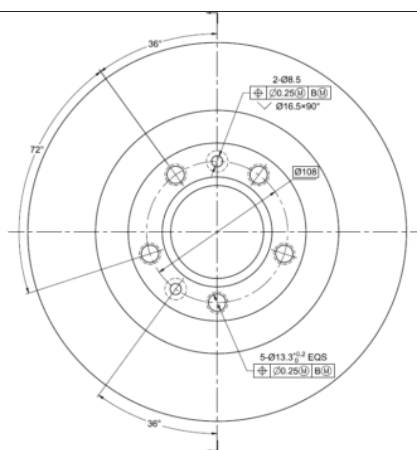
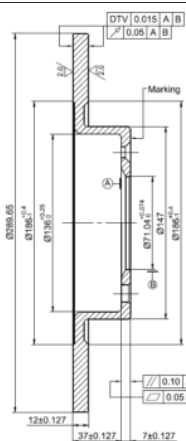
78BD0040-2



8 424073 288769

Weight: 5.170

O.E.M.	MAKE
16 427 735 80	PEUGEOT
4249.E0	PEUGEOT (DF-PSA)
4249.G2	PEUGEOT



78BD0040-2

E1 90R-02C0415/0014



Ø289.65x12x44

MAKE
PEUGEOT
PEUGEOT (DF-PSA)



Trac.	CC	Kw	CV
-------	----	----	----



Front / Rear

PEUGEOT

508 (8D_) 11.10-

Saloon (Large family car-D Segment)

1.6 VTi (5FH (EP6C))	Gasolina	FWD	1598	85	116	11.10-12.18	■
1.6 VTi (5FS (EP6C))	Gasolina	FWD	1598	88	120	11.10-12.18	■
1.6 THP (5FN (EP6CDT))	Gasolina	FWD	1598	110	150	11.10-12.18	■
1.6 THP (5FV (EP6CDT))	Gasolina	FWD	1598	115	156	11.10-12.18	■
1.6 THP (5GZ (EP6FDT))	Gasolina	FWD	1598	120	163	01.12-12.18	■
1.6 THP (5GZ (EP6FDT))	Gasolina	FWD	1598	121	165	09.11-12.18	■
1.6 HDi (9HL (DV6C))	Diesel	FWD	1560	82	112	11.10-12.18	■
1.6 HDi (9HR (DV6C))	Diesel	FWD	1560	82	112	11.10-12.18	■
1.6 HDi (9HD (DV6CTED))	Diesel	FWD	1560	84	115	02.12-12.18	■
1.6 HDi (BHX (DV6FC))	Diesel	FWD	1560	85	116	09.14-12.18	■
1.6 BlueHDi 120 (BHZ (DV6FC))	Diesel	FWD	1560	88	120	03.14-12.18	■
2.0 HDi (RHR (DW10BTED4))	Diesel	FWD	1997	100	136	11.10-12.18	■
2.0 HDi (RHA (DW10CTED4))	Diesel	FWD	1997	103	140	11.10-12.18	■
2.0 HDi (RHF (DW10BTED4))	Diesel	FWD	1997	103	140	11.10-12.18	■
2.0 BlueHDi 150 (AHX (DW10FD))	Diesel	FWD	1997	110	150	04.14-12.18	■
2.0 HDi (RHH (DW10CTED4))	Diesel	FWD	1997	120	163	11.10-12.18	■
2.2 HDi (4HL (DW12C))	Diesel	FWD	2179	150	204	11.10-12.18	■

508 SW (8E_) 11.11-

Estate Van (Large family car-D Segment)

1.6 HDi (9HL (DV6C))	Diesel	FWD	1560	84	114	03.13-12.18	■
2.0 HDi (RHF (DW10BTED4))	Diesel	FWD	1997	103	140	03.13-12.18	■
2.0 HDi (RHH (DW10CTED4))	Diesel	FWD	1997	120	163	03.13-12.18	■
2.2 HDi (4HL (DW12C))	Diesel	FWD	2179	150	204	11.11-	■

LISTA DE APLICACIONES - BUYERS GUIDE

508 SW (8E_) 11.10-					Estate (Large family car-D Segment)			
1.6 VTi (5FH (EP6C))		Gasolina	FWD	1598	85	116	11.10-12.18	■
1.6 VTi (5FS (EP6C))		Gasolina	FWD	1598	88	120	11.10-12.18	■
1.6 THP (5FE (EP6CDTM))		Gasolina	FWD	1598	110	150	11.10-12.18	■
1.6 THP (5FN (EP6CDT))		Gasolina	FWD	1598	110	150	11.10-12.18	■
1.6 THP (5FV (EP6CDT))		Gasolina	FWD	1598	115	156	11.10-12.18	■
1.6 (5GZ (EP6FDT))		Gasolina	FWD	1598	121	165	02.12-12.18	■
1.6 HDi (9HL (DV6C))		Diesel	FWD	1560	82	112	11.10-12.18	■
1.6 HDi (9HR (DV6C))		Diesel	FWD	1560	82	112	11.10-12.18	■
1.6 HDi (9HL (DV6C))		Diesel	FWD	1560	84	115	02.12-12.18	■
1.6 HDi (9HR (DV6C))		Diesel	FWD	1560	84	115	02.12-12.18	■
1.6 HDi (BHX (DV6FC))		Diesel	FWD	1560	85	116	09.14-12.18	■
1.6 BlueHdi 120 (BHZ (DV6FC))		Diesel	FWD	1560	88	120	03.14-12.18	■
2.0 HDi (RHR (DW10BTED4))		Diesel	FWD	1997	100	136	11.10-12.18	■
2.0 HDi (RHA (DW10CTED4))		Diesel	FWD	1997	103	140	11.10-12.18	■
2.0 HDi (RHF (DW10BTED4))		Diesel	FWD	1997	103	140	11.10-12.18	■
2.0 BlueHdi 150 (AHX (DW10FD))		Diesel	FWD	1997	110	150	04.14-12.18	■
2.0 HDi (RHH (DW10CTED4))		Diesel	FWD	1997	120	163	11.10-12.18	■
2.0 BlueHdi 180 (AHW (DW10FC))		Diesel	FWD	1997	133	180	04.14-12.18	■
2.0 HDi 180 RXH		Diesel	FWD	1997	133	181	10.14-12.18	■
2.2 HDi (4HL (DW12C))		Diesel	FWD	2179	150	204	11.10-12.18	■
PEUGEOT (DF-PSA)								
508 07.11-					Saloon (Large family car-D Segment)			
1.8 THP (6G01 10UF51 (EP8FDT))		Gasolina	FWD	1751	150	204	01.15-	■
2.0		Gasolina	FWD	1997	108	147	07.11-	■
2.3		Gasolina	FWD	2253	126	171	07.11-	■
1.6 THP		Gasolina	FWD	10598	123	167	01.15-	■