

LISTA DE APLICACIONES - BUYERS GUIDE

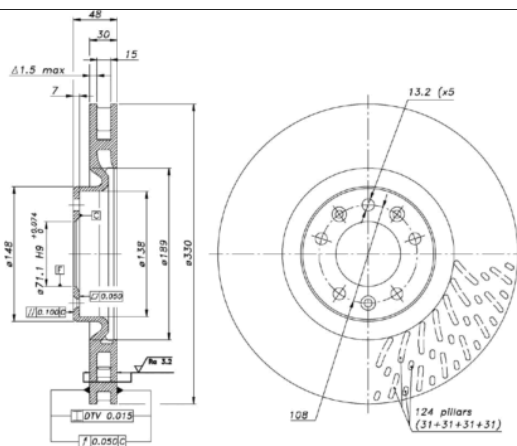
78BD0102-1



8 424073 291578

Weight: 9.700

O.E.M.	MAKE
1642761480	PEUGEOT
9804605780	PEUGEOT



78BD0102-1



Ø330x15x48

MAKE
CITROËN
DS
OPEL
PEUGEOT
VAUXHALL



Trac.	CC	Kw	CV
-------	----	----	----



Front / Rear

CITROËN

C5 AIRCROSS (A_) 11.18-

SUV (Compact SUV-J Segment)

1.2 PureTech 130 (ARHNSJ) (HNS (EB2ADTS))	Gasolina	FWD	1199	96	131	11.18-	■
1.6 THP 150 (A45GXJ) (5GX (EP6FDTMD))	Gasolina	FWD	1598	110	150	09.19-	■
1.6 THP 165 (A45GYJ) (5GY (EP6FDTM))	Gasolina	FWD	1598	121	165	05.19-	■
1.6 PureTech 180 (A45GFR) (5GF (EP6FADTXD))	Gasolina	FWD	1598	133	181	11.18-	■
1.2 Hybrid 136 (ARHPYJ)	Gasol./el éc.	FWD	1199	100	136	05.23-	■
1.6 Hybrid 180 (A4DGXR)	Gasol./el éc.	FWD	1598	133	181	11.22-	■
1.6 Hybrid 225 (A45GFR)	Gasol./el éc.	FWD	1598	165	224	04.20-	■
1.5 BlueHdi 130 (ACYHZJ, ACYHZR) (YHZ (DV5RC))	Diesel	FWD	1499	96	131	11.18-	■
2.0 BlueHdi 180 (AJEHZR) (EHZ (DW10FC))	Diesel	FWD	1997	130	177	11.18-	■

C5 III X (ND_, NC_) 09.21-

Estate (Large family car-D Segment)

PureTech 130 (NCHNSP)	Gasolina	FWD	1199	96	131	09.21-	■
PureTech 180 (ND5GFP)	Gasolina	FWD	1598	133	181	09.21-	■
Hybrid 180 (NDDGYP)	Gasol./el éc.	FWD	1598	133	181	02.23-	■
Hybrid 225 (NDDGYP)	Gasol./el éc.	FWD	1598	165	224	09.21-	■

DS

DS 4 II (FR_, FB_, F3_) 10.21-

Hatchback (Compact car-C Segment)

PureTech 225 (FP5GGT)	Gasolina	FWD	1598	165	224	10.21-	■
-----------------------	----------	-----	------	-----	-----	--------	---

LISTA DE APLICACIONES - BUYERS GUIDE

DS 7 (J4_, JC_) 09.22-					SUV (Compact Crossover CUV-C Segment)			
PureTech 180 (J45GFU)		Gasolina	FWD	1598	133	180	09.22-	■
1.6 (EP6FADTXM)		Gasolina	FWD	1598	158	215	04.23-	■
PureTech 225 (J45GGU)		Gasolina	FWD	1598	165	224	09.22-	■
E-TENSE 225 (J4DGZU)		Gasol./el éc.	FWD	1598	165	224	09.22-	■
E-TENSE 4x4 300 (J45GBU)		Gasol./el éc.	4WD	1598	220	299	09.22-	■
E-TENSE 4x4 360 (J45GBT)		Gasol./el éc.	4WD	1598	265	360	09.22-	■
BlueHDi 130 (JCYHZU)		Diesel	FWD	1499	96	131	09.22-	■
DS 7 Crossback (J4_, JR_, JC_) 09.17-					SUV (Compact Crossover CUV-C Segment)			
E-TENSE 225 (J4DGZU, J45GQU)		Gasol./el éc.	FWD	1598	165	224	05.21-	■
E-TENSE 4x4 (J45GBU) (5GB (EP6FADTXHP))		Gasol./el éc.	4WD	1598	221	300	05.19-	■
DS 9 (X2_) 09.20-					Saloon (Executive car-E Segment)			
1.6 PureTech 225 (X25GGR)		Gasolina	FWD	1598	165	225	09.20-	■
1.6 E-TENSE 225 (X2DGZR)		Gasol./el éc.	FWD	1598	165	225	09.20-	■
1.6 E-TENSE 250 (X2DGYR)		Gasol./el éc.	FWD	1598	184	250	08.22-	■
E-TENSE 360 4x4 (X25GBR)		Gasol./el éc.	4WD	1598	265	360	06.21-	■
OPEL								
ASTRA L (OV5) 10.21-					Hatchback (Compact car-C Segment)			
1.2 (FPHNSL, FPHNSR)		Gasolina	FWD	1199	96	131	10.21-	■
1.6 Plug-In-Hybrid (F3DGZT)		Gasol./el éc.	FWD	1598	133	181	10.21-	■
1.6 Plug-In-Hybrid (F3DGZT)		Gasol./el éc.	FWD	1598	165	224	01.23-	■
Astra-e (F3ZKWZ)		Eléctrico	FWD		115	156	03.23-	■
1.5 Turbo D (FBYHZT, FBYHZJ)		Diesel	FWD	1499	96	131	10.21-	■
ASTRA L Sports Tourer (OV5) 10.21-					Estate (Compact car-C Segment)			
1.2 (FRHNSL, FRHNSR)		Gasolina	FWD	1199	96	131	10.21-	■
1.6 Plug-In Hybrid (F4DGZT, F4DGYT)		Gasol./el éc.	FWD	1598	133	181	10.21-	■
1.6 Plug-In Hybrid (F4DGZT, F4DGYT)		Gasol./el éc.	FWD	1598	165	224	03.23-	■
Astra-e (F4ZKWZ)		Eléctrico	FWD		115	156	03.23-	■
1.5 CDTi (FCYHZT, FCYHZJ)		Diesel	FWD	1499	96	131	10.21-	■
PEUGEOT								
(FP_, F3_) 07.22-					Hatchback ()			
PureTech 130 (FPHNST)		Gasolina	FWD	1199	96	131	07.22-	■
PureTech 215 (F3EGPP)		Gasolina	FWD	1598	158	215	02.23-	■
Hybrid 136 (FPHPYC)		Gasol./el éc.	FWD	1199	100	136	07.23-	■
Hybrid 180 (F3DGXT)		Gasol./el éc.	FWD	1598	133	181	07.22-	■
Hybrid 225 (F3DGYT)		Gasol./el éc.	FWD	1598	165	224	07.22-	■
3008 II SUV (MC_, MR_, MJ_, M4_) 05.16-					SUV (Compact Crossover CUV-C Segment)			
hybrid (5GQ (EP6FADTXHPD))		Gasol./el éc.	FWD	1598	165	224	10.19-	■
Hybrid4 (M45GBU) (5GB (EP6FADTXHPA))		Gasol./el éc.	4WD	1598	220	299	10.19-	■

LISTA DE APLICACIONES - BUYERS GUIDE

308 II (LB_) 03.15-					Hatchback Van (Compact car-C Segment)			
1.6 e-HDi 115 (LB9HCG) (9HC (DV6C))		Diesel	FWD	1560	85	116	03.15-06.21	■
1.6 BlueHDi 120 (LBBHZM) (BHX (DV6FC))		Diesel	FWD	1560	88	120	03.15-06.21	■
308 II (LB_, LP_, LW_, LH_, L3_) 09.13-					Hatchback (Compact car-C Segment)			
1.6 GT 205 (5GT (EP6FDTX))		Gasolina	FWD	1598	151	205	06.14-06.21	■
1.6 PureTech 225 (GGR (EP6FADTX))		Gasolina	FWD	1598	165	225	01.18-06.21	■
1.6 Flex		Gasol./Et anol	FWD	1598	127	173	11.15-02.19	■
2.0 GT BlueHDi 180 (EHZ (DW10FC))		Diesel	FWD	1997	130	177	06.17-06.21	■
2.0 GT BlueHDi 180 (AHW (DW10FC))		Diesel	FWD	1997	132	179	06.17-06.21	■
2.0 GT BlueHDi 180 (AHW (DW10FC))		Diesel	FWD	1997	133	181	06.14-06.21	■
308 II SW (LC_, LJ_, LR_, LX_, L4_) 03.14-					Estate (Compact car-C Segment)			
1.6 GT 205 (5GT (EP6FDTX))		Gasolina	FWD	1598	151	205	02.15-06.21	■
1.6 PureTech 225 (L45GGR) (5GG (EP6FADTX))		Gasolina	FWD	1598	165	225	01.18-06.21	■
1.5 BlueHDi 100 (YHY (DV5RD))		Diesel	FWD	1499	75	102	04.18-06.21	■
1.5 BlueHDi 130 (YHZ (DV5RC))		Diesel	FWD	1499	96	131	06.17-06.21	■
2.0 GT BlueHDi 180 (EHZ (DW10FC))		Diesel	FWD	1997	130	177	06.17-06.21	■
2.0 GT BlueHDi 180 (AHW (DW10FC))		Diesel	FWD	1997	132	179	06.17-06.21	■
2.0 GT HDi 180 / BlueHDi 180 (AHW (DW10FC))		Diesel	FWD	1997	133	181	06.14-06.21	■
308 III (FB_, FH_, FP_, F3_, FM_) 07.21-					Hatchback (Compact car-C Segment)			
PureTech 110 (FPHNPL)		Gasolina	FWD	1199	81	110	07.21-	■
PureTech 130 (FPHNSL, FPHNST)		Gasolina	FWD	1199	96	131	07.21-	■
Hybrid 180 (F3DGXT, F3DGMH)		Gasol./el éc.	FWD	1598	133	181	07.21-	■
Hybrid 225 (F3DGYT, F3DGNH)		Gasol./el éc.	FWD	1598	165	224	07.21-	■
BlueHDi 130 (FBYHZL, FBYHZZ)		Diesel	FWD	1499	96	131	07.21-	■
308 III SW (FC_, FJ_, FR_, F4_, FN_) 07.21-					Estate (Compact car-C Segment)			
PureTech 110 (FRHNPL)		Gasolina	FWD	1199	81	110	07.21-	■
PureTech 130 (FRHNSL, FRHNST)		Gasolina	FWD	1199	96	131	07.21-	■
Hybrid 180 (F4DGXT)		Gasol./el éc.	FWD	1598	133	181	07.21-	■
Hybrid 225 (F4DGYT)		Gasol./el éc.	FWD	1598	165	224	07.21-	■
BlueHDi 130 (FCYHZL, FCYHZZ)		Diesel	FWD	1499	96	131	07.21-	■
508 II (FB_, FH_, F3_) 09.18-					Hatchback (Large family car-D Segment)			
PureTech 130 (FBHNSR) (HNS (EB2ADTS))		Gasolina	FWD	1199	96	131	06.20-	■
1.6 THP 150 (F35GXV) (5GX (EP6FDTMD))		Gasolina	FWD	1598	110	150	09.18-	■
1.6 THP 165 (F35GYV) (5GY (EP6FDTM))		Gasolina	FWD	1598	121	165	09.18-	■
1.6 PureTech 180 (F35GFR) (5GF (EP6FADTXD))		Gasolina	FWD	1598	133	181	10.18-	■
1.6 PureTech 225 (F35GGR) (5GG (EP6FADTX))		Gasolina	FWD	1598	165	224	10.18-	■
Hybrid 225 (F35GQU) (5GQ (EP6FADTXHPD))		Gasol./el éc.	FWD	1598	165	224	08.19-	■
PSE Hybrid4 360 (F35GBT)		Gasol./el éc.	4WD	1598	265	360	01.21-	■
1.5 BlueHDI 130 (FBYHZJ, FBYHZZ) (YHZ (DV5RC))		Diesel	FWD	1499	96	131	10.18-	■
2.0 BlueHDI 160 (FHEHYR) (EHY (DW10FCC))		Diesel	FWD	1997	120	163	10.18-	■
2.0 BlueHDI 180 (FHEHZZ, FHEHZN) (EHZ (DW10FC))		Diesel	FWD	1997	130	177	10.18-	■

LISTA DE APLICACIONES - BUYERS GUIDE

508 II SW (FC_, FJ_, F4_) 09.18-					Estate (Large family car-D Segment)			
PureTech 130 (HNS (EB2ADTS))	Gasolina	FWD	1199	96	131	06.20-	■	
1.6 THP 165 (F45GYV) (5GY (EP6FDTM))	Gasolina	FWD	1598	121	165	09.18-		
1.6 PureTech 180 (GFR (EP6FADTXD))	Gasolina	FWD	1598	133	181	09.18-		
1.6 PureTech 225 (F45GGR) (GCR (EP6FADTX))	Gasolina	FWD	1598	165	224	09.18-		
Hybrid 224 (F45GQU) (5GQ (EP6FADTXHPD))	Gasol./el éc.	FWD	1598	165	224	08.19-		
PSE Hybrid4 360 (F45GBT)	Gasol./el éc.	4WD	1598	265	360	01.21-		
1.5 BlueHDi 130 (YHZ (DV5RC))	Diesel	FWD	1499	96	131	09.18-		
2.0 BlueHDi 160 (EHY (DW10FCC))	Diesel	FWD	1997	120	163	09.18-		
2.0 BlueHDi 180 (EHZ (DW10FC))	Diesel	FWD	1997	130	177	09.18-	■	
VAUXHALL								
ASTRA Mk VIII (L) 10.21-				Hatchback (Compact car-C Segment)				
1.2 (FPHNSL, FPHNSR)	Gasolina	FWD	1199	96	131	10.21-	■	
1.6 Plug-In-Hybrid (F3DGZT)	Gasol./el éc.	FWD	1598	133	181	10.21-		
1.6 Plug-In-Hybrid (F3DGZT)	Gasol./el éc.	FWD	1598	165	224	06.22-		
Astra-e (F3ZKWZ)	Eléctrico	FWD		115	156	03.23-		
1.5 Turbo D (FBYHZT, FBYHZJ)	Diesel	FWD	1499	96	131	10.21-		
ASTRA Mk VIII (L) Sports Tourer 10.21-				Estate (Compact car-C Segment)				
1.2	Gasolina	FWD	1199	96	131	10.21-	■	
1.6 Plug-In-Hybrid	Gasol./el éc.	FWD	1598	133	181	10.21-		
1.6 Plug-In-Hybrid (F4DGYT, F4DGZT)	Gasol./el éc.	FWD	1598	165	224	03.23-		
Astra-e (F4ZKWZ)	Eléctrico	FWD		115	156	03.23-		
1.5 Turbo D	Diesel	FWD	1499	96	131	10.21-		