

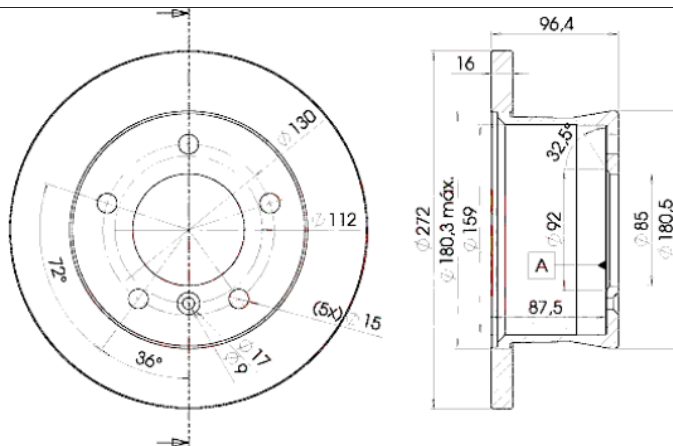
LISTA DE APLICACIONES - BUYERS GUIDE

78BD0183-1



Weight: 7.214

O.E.M.	MAKE
2D0 615 601 A	VW
902 423 01 12	MERCEDES-BENZ
902 423 03 12	MERCEDES-BENZ



78BD0183-1



Ø272x16x96.4

MAKE
MERCEDES-BENZ
PUCH
VW



Trac.	CC	Kw	CV
-------	----	----	----



Front / Rear

MERCEDES-BENZ

(W461) 09.89-					Platform/Chassis ()			
G 280 CDI 4-matic (461.346, 461.370)		Diesel	4WD	2987	135	184	05.07-12.12	■
G-Class (W463) 09.89-					Closed Off-Road Vehicle (Luxury Crossover SUV-J Segment)			
G 320 (463.230, 463.231) (M 104.996)	-08/97	Gasolina	4WD	3199	155	211	09.94-12.97	■
G 320 (463.232, 463.233, 463.244, 463.245) (M 112.945)		Gasolina	4WD	3199	158	215	07.97-08.04	■
G 36 AMG (463.230) (M 104.996 (AMG 3.6))		Gasolina	4WD	3606	200	272	01.95-07.98	■
G 500 (463.234, 463.239) (M 176.980)		Gasolina	4WD	3982	310	422	06.15-04.18	■
G 500 (463.249) (M 113.962)		Gasolina	4WD	4966	215	292	09.04-12.05	■
G 500 (463.247, 463.248, 463.249, 463.240, 463.241,... (M 113.962)	09/99-	Gasolina	4WD	4966	218	296	04.98-12.15	■
G 55 AMG (463.243, 463.246) (M 113.982)	09/99-	Gasolina	4WD	5439	260	354	04.99-07.08	■
G 55 AMG (463.270, 463.271) (M 113.993)		Gasolina	4WD	5439	350	476	06.04-07.06	■
G 55 AMG (463.270, 463.271)		Gasolina	4WD	5439	350	476	09.04-12.11	■
G 55 AMG (463.270, 463.271) (M 113.993)		Gasolina	4WD	5439	368	500	08.06-12.12	■
G 55 AMG (463.270, 463.271) (M 113.993)		Gasolina	4WD	5439	373	507	08.08-06.12	■
G 500 (463.222, 463.236, 463.237, 463.242) (M 273.963)		Gasolina	4WD	5461	285	388	05.08-08.15	■
G 500 (463.222, 463.236, 463.237, 463.242) (M 273.969)		Gasolina	4WD	5461	285	388	05.08-08.15	■
G 270 CDI (463.322, 463.323) (OM 612.965)		Diesel	4WD	2685	115	156	10.01-07.03	■
G 350 CDI (463.346) (OM 642.886)		Diesel	4WD	2987	155	211	07.11-08.15	■
G 320 CDI (463.343) (OM 642.970)		Diesel	4WD	2987	165	224	09.06-12.12	■
G 350 CDI (463.306, 463.340, 463.341, 463.346) (OM 642.970)		Diesel	4WD	2987	165	224	06.09-12.11	■
G 350 d (463.348) (OM 642.887)		Diesel	4WD	2987	180	245	06.15-04.18	■

LISTA DE APLICACIONES - BUYERS GUIDE

300 GD (463.327, 463.328) (OM 603.931)		Diesel	4WD	2996	83	113	09.89-08.93	■
G 300 TD (463.330, 463.331) (OM 606.964)		Diesel	4WD	2996	130	177	08.96-07.00	■
350 Turbo GD (463.320, 463.321) (OM 603.972)		Diesel	4WD	3449	100	136	09.91-08.96	■
G 320 CDI (463.321) (OM 603.972)		Diesel	4WD	3449	100	136	09.96-08.99	■
G 400 CDI (463.332, 463.333) (OM 628.962)		Diesel	4WD	3996	184	250	12.00-07.06	■
G-Class (W460) 03.79-08.93					Closed Off-Road Vehicle (Off-Road SUV-J Segment)			
G 270 CDI (OM 612.966)		Diesel	4WD	2685	115	156	01.03-12.06	■
G 290 TD (461.335, 461.336) (OM 602.983)		Diesel	4WD	2874	88	120	07.97-07.01	■
G 280 CDI (461.304, 461.334, 461.339, 461.344, 461.390) (OM 642.884)		Diesel	4WD	2987	135	184	04.09-	■
G 280 CDI (461.304, 461.334, 461.339, 461.344, 461.390) (OM 642.975)		Diesel	4WD	2987	135	184	04.09-	■
G 300 CDI (461.333) (OM 642.884)		Diesel	4WD	2987	135	184	04.10-07.23	■
300 GD (460.3)	05/93-	Diesel	4WD	2996	83	113	03.79-07.93	■
G-Class (W463) 09.89-					Open Off-Road Vehicle (Luxury Crossover SUV-J Segment)			
320 GE (463.208) (M 104.996)		Gasolina	4WD	3199	155	211	09.94-11.97	■
G 320 (463.209, 463.250) (M 112.945)		Gasolina	4WD	3199	158	215	11.97-08.04	■
G 500 (463) (M 113.962)		Gasolina	4WD	4966	218	296	04.98-12.15	■
G 500 (463.202) (M 273.963)		Gasolina	4WD	5461	285	388	12.09-08.14	■
G 500 (463.202) (M 273.969)		Gasolina	4WD	5461	285	388	12.09-08.14	■
G 350 CDI (OM 642.886)		Diesel	4WD	2987	155	211	07.11-12.15	■
G 320 CDI (463.303) (OM 642.970)		Diesel	4WD	2987	165	224	09.06-12.12	■
G 350 CDI (463.306) (OM 642.970)		Diesel	4WD	2987	165	224	06.09-12.11	■
300 GD (463.307) (OM 603.931)	05/93-	Diesel	4WD	2996	83	113	09.89-08.93	■
G 300 TD (463.308) (OM 606.964)		Diesel	4WD	2996	130	177	09.96-07.00	■
350 G Turbo-D (463.300) (OM 603.972)		Diesel	4WD	3449	100	136	09.91-09.97	■
G 320 CDI (463.320) (OM 603.972)		Diesel	4WD	3449	100	136	09.96-08.99	■
G 400 CDI (463.309) (OM 628.962)		Diesel	4WD	3996	184	250	12.00-07.06	■
SPRINTER CLASSIC 3,5-Ton. (B909) 09.13-					Van (LCVs-N1 Segment)			
311 CDI (909.632, 909.633) (OM 646.701)		Diesel	RWD	2148	80	109	09.13-	■
313 CDI (909.632, 909.633) (OM 646.701)		Diesel	RWD	2148	100	136	01.17-	■
SPRINTER CLASSIC 4,6-Ton. (B909) 09.13-					Bus (Minibus-M2-Segment)			
411 CDI (909.843) (OM 646.701)		Diesel	RWD	2148	80	109	09.13-	■
SPRINTER CLASSIC 4,6-Ton. (B909) 01.17-					Van (LCVs-N1 Segment)			
413 CDI (909.643) (OM 646.701)		Diesel	RWD	2148	100	136	01.17-	■
SPRINTER 3-Ton. (B903) 01.95-05.12					Bus (Minibus-M2-Segment)			
314 (903.071, 903.072, 903.073, 903.671, 903.672,... (M 111.979)	-06/01	Gasolina	RWD	2295	105	143	02.95-05.06	■
314 (903.071, 903.072, 903.073, 903.671, 903.672,... (M 111.984)	-06/01	Gasolina	RWD	2295	105	143	02.95-05.06	■
314 NGT (903.072, 903.671, 903.672) (M 111.979)	-06/01	Gasol./Gas (CNG)	RWD	2295	95	129	02.95-05.06	■
314 NGT (903.072, 903.671, 903.672) (M 111.984)	-06/01	Gasol./Gas (CNG)	RWD	2295	95	129	02.95-05.06	■
308 E (903.372)	-06/01	Eléctrico	RWD		40	54	01.96-05.06	■
308 CDI (903.671, 903.672, 903.673) (OM 611.987)	-06/01	Diesel	RWD	2148	60	82	04.00-05.06	■
311 CDI (903.671, 903.672) (OM 611.981)	-06/01	Diesel	RWD	2148	80	109	04.00-05.06	■
313 CDI (903.671, 903.672) (OM 611.981)	-06/01	Diesel	RWD	2148	95	129	04.00-05.06	■
2.3 D		Diesel	RWD	2299	58	79	06.97-12.99	■
308 D (903.372, 903.373) (OM 601.943)		Diesel	RWD	2299	58	79	02.95-04.00	■

LISTA DE APLICACIONES - BUYERS GUIDE

316 CDI (903.671, 903.672, 903.673) (OM 612.981)	-06/01	Diesel	RWD	2685	115	156	04.00-05.06	■
316 CDI (903.671, 903.672, 903.673) (OM 647.981)	-06/01	Diesel	RWD	2685	115	156	04.00-05.06	■
310 D (903.471, 903.472, 903.473) (OM 602.980)		Diesel	RWD	2874	75	102	01.97-12.99	■
310 D 4x4 (903.472, 903.473) (OM 602.980)	-06/01	Diesel	4WD	2874	75	102	05.97-08.02	■
312 D 2.9 (903.471, 903.472, 903.473) (OM 602.980)		Diesel	RWD	2874	90	122	02.95-04.00	■
312 D 2.9 4x4 (903.473) (OM 602.980)	-06/01	Diesel	4WD	2874	90	122	05.97-08.02	■
SPRINTER 3-Ton. (B903) 01.95-05.12					Platform/Chassis (LCVs-N1 Segment)			
314 (903.011, 903.012, 903.013, 903.022, 903.612,... (M 111.979)	-06/01	Gasolina	RWD	2295	105	143	02.95-05.06	■
314 (903.011, 903.012, 903.013, 903.022, 903.612,... (M 111.984)	-06/01	Gasolina	RWD	2295	105	143	02.95-05.06	■
314 NGT (903.611, 903.612, 903.613, 903.622, 903.012,... (M 111.979)	-06/01	Gasol./Gas (CNG)	RWD	2295	95	129	02.95-05.06	■
314 NGT (903.611, 903.612, 903.613, 903.622, 903.012,... (M 111.984)	-06/01	Gasol./Gas (CNG)	RWD	2295	95	129	02.95-05.06	■
308 E (903.312, 903.322)		Eléctrico	RWD		40	54	01.96-05.06	■
308 CDI (903.611, 903.612, 903.613, 903.621, 903.622,... (OM 611.987)	-06/01	Diesel	RWD	2148	60	82	04.00-05.06	■
311 CDI (903.611, 903.612, 903.613, 903.621, 903.622,... (OM 611.981)	-06/01	Diesel	RWD	2148	80	109	04.00-05.06	■
313 CDI (903.611, 903.612, 903.621, 903.622) (OM 611.981)	-06/01	Diesel	RWD	2148	95	129	04.00-05.06	■
308 D 2.3 (903.311, 903.322) (OM 601.943)		Diesel	RWD	2299	58	79	02.95-04.00	■
308 D 2.3 (903.311, 903.322) (OM 601.943)		Diesel	RWD	2299	60	82	11.96-04.00	■
316 CDI (903.611, 903.612, 903.613, 903.621, 903.622,... (OM 612.981)	-06/01	Diesel	RWD	2685	115	156	04.00-05.06	■
316 CDI (903.611, 903.612, 903.613, 903.621, 903.622,... (OM 647.981)	-06/01	Diesel	RWD	2685	115	156	04.00-05.06	■
316 CDI 4x4 (903.612, 903.613, 903.622, 903.623) (OM 612.981)		Diesel	4WD	2685	115	156	08.02-05.06	■
316 CDI 4x4 (903.612, 903.613, 903.622, 903.623) (OM 647.981)		Diesel	4WD	2685	115	156	08.02-05.06	■
310 D 2.9 (903.411, 903.412, 903.413, 903.421, 903.422,... (OM 602.980)		Diesel	RWD	2874	75	102	01.97-04.00	■
310 D 2.9 4x4 (903.421, 903.422, 903.423) (OM 602.980)		Diesel	4WD	2874	75	102	01.97-04.00	■
312 D 2.9 (903.411, 903.412, 903.421, 903.422, 903.423) (OM 602.980)		Diesel	RWD	2874	90	122	02.95-04.00	■
312 D 2.9 4x4 (903.411)		Diesel	4WD	2874	90	122	02.95-04.00	■
SPRINTER 3-Ton. (B903) 01.95-05.12					Van (LCVs-N1 Segment)			
314 (903.061, 903.062, 903.063, 903.661, 903.662) (M 111.979)	-06/01	Gasolina	RWD	2295	105	143	02.95-05.06	■
314 (903.061, 903.062, 903.063, 903.661, 903.662) (M 111.984)	-06/01	Gasolina	RWD	2295	105	143	02.95-05.06	■
314 NGT (903.661, 903.061, 903.062, 903.063, 903.662) (M 111.979)	-06/01	Gasol./Gas (CNG)	RWD	2295	95	129	02.95-05.06	■
314 NGT (903.661, 903.061, 903.062, 903.063, 903.662) (M 111.984)	-06/01	Gasol./Gas (CNG)	RWD	2295	95	129	02.95-05.06	■
308 E (903.362)		Eléctrico	RWD		40	54	01.96-05.06	■
308 CDI (903.661, 903.662, 903.663) (OM 611.987)	-06/01	Diesel	RWD	2148	60	82	04.00-05.06	■
311 CDI (903.661, 903.662, 903.663) (OM 611.981)	-06/01	Diesel	RWD	2148	80	109	04.00-05.06	■
313 CDI (903.663, 903.662, 903.661) (OM 611.981)	-06/01	Diesel	RWD	2148	95	129	04.00-05.06	■
2.3 D		Diesel	RWD	2299	58	79	06.97-12.99	■
308 D 2.3 (903.361, 903.362, 903.363) (OM 601.943)		Diesel	RWD	2299	58	79	02.95-04.00	■

LISTA DE APLICACIONES - BUYERS GUIDE

308 D 2.3 (903.361) (OM 601.943)		Diesel	RWD	2299	60	82	02.95-04.00	■
316 CDI (903.661, 903.662, 903.663) (OM 612.981)	-06/01	Diesel	RWD	2685	115	156	04.00-05.06	■
316 CDI (903.661, 903.662, 903.663) (OM 647.981)	-06/01	Diesel	RWD	2685	115	156	04.00-05.06	■
310 D 2.9 (903.461, 903.462, 903.463) (OM 602.980)		Diesel	RWD	2874	75	102	02.95-04.00	■
310 D 2.9 4x4 (903.461, 903.462) (OM 602.980)		Diesel	4WD	2874	75	102	06.97-04.00	■
312 D 2.9 (903.461, 903.462, 903.463) (OM 602.980)		Diesel	RWD	2874	90	122	02.95-04.00	■
312 D 2.9 4x4 (903.461, 903.462) (OM 602.980)	-06/01	Diesel	4WD	2874	90	122	05.97-08.02	■
PUCH								
G-MODELL (W460) 03.79-12.91					Closed Off-Road Vehicle (Off-Road SUV-J Segment)			
230 G (460.230, 460.231) (M 102.944)		Gasolina	4WD	2299	80	109	01.86-06.89	■
230 GE (460.238, 460.239) (M 102.987)		Gasolina	4WD	2299	90	122	01.86-12.91	■
230 GE (461.239, 461.238) (M 102.979)		Gasolina	4WD	2299	90	122	11.91-08.96	■
230 GE (461.239, 461.238) (M 102.996)		Gasolina	4WD	2299	90	122	11.91-08.96	■
230 GE (460.238, 460.239) (M 102.981)		Gasolina	4WD	2299	92	125	03.79-12.91	■
230 GE (460.238, 460.239) (M 102.987)		Gasolina	4WD	2299	92	125	03.79-12.91	■
230 G (460.230, 460.231) (M 115.973)		Gasolina	4WD	2307	66	90	03.79-08.85	■
230 G (460.230, 460.231) (M 115.973)		Gasolina	4WD	2307	75	102	03.79-08.85	■
280 GE (460.232, 460.233) (M 110.994)		Gasolina	4WD	2746	110	150	01.86-12.91	■
280 GE (460.232, 460.233) (M 110.994)		Gasolina	4WD	2746	115	156	03.79-12.91	■
300 GE (463.227, 463.228) (M 103.987)		Gasolina	4WD	2960	125	170	06.89-08.93	■
G 320 (463.230, 463.231) (M 104.996)		Gasolina	4WD	3199	155	211	02.94-12.97	■
G 320 (V6) (463.232, 463.233) (M 112.945)		Gasolina	4WD	3199	158	215	04.97-11.00	■
G 36 AMG (463.231, 463.230) (M 104.952 (AMG 3,6))		Gasolina	4WD	3606	190	258	01.95-04.98	■
G 36 AMG (463.230, 463.231) (M 104.952 (AMG 3,6))		Gasolina	4WD	3606	200	272	01.95-04.98	■
G 500 (463.240, 463.241) (M 113.962)	vehicles with ABS	Gasolina	4WD	4966	218	296	12.97-11.00	■
G 55 AMG (463.240, 463.241) (M 113.982)		Gasolina	4WD	5439	260	354	04.99-03.01	■
240 GD (460.330, 460.331) (OM 616.936)		Diesel	4WD	2399	53	72	03.79-09.87	■
240 GD (460.330, 460.331) (OM 616.938)		Diesel	4WD	2399	53	72	03.79-09.87	■
250 GD (460.337, 460.338) (OM 602.930)		Diesel	4WD	2497	62	84	10.87-12.91	■
290 GD (461.338, 461.337) (OM 602.942)		Diesel	4WD	2874	70	95	10.91-12.97	■
290 GD (461.338, 461.337) (OM 602.947)		Diesel	4WD	2874	70	95	10.91-12.97	■
290 GD Turbodiesel (461.335, 461.336) (OM 602.983)		Diesel	4WD	2874	88	120	04.97-12.01	■
G 300 Turbodiesel (463.330, 463.331) (OM 606.964)	vehicles with ABS	Diesel	4WD	2996	130	177	01.96-11.00	■
300 GD (460.332, 460.333) (OM 617.931)		Diesel	4WD	2998	59	80	03.79-08.79	■
300 GD (460.332, 460.333) (OM 617.932)		Diesel	4WD	2998	59	80	03.79-08.79	■
300 GD (460.332, 460.333) (OM 617.931)		Diesel	4WD	2998	65	88	09.79-12.91	■
300 GD (460.332, 460.333) (OM 617.932)		Diesel	4WD	2998	65	88	09.79-12.91	■
350 GD Turbo (463.320, 463.321) (OM 603.972)		Diesel	4WD	3449	100	136	08.91-08.93	■
G 350 Turbo (463.320, 463.321) (OM 603.972)		Diesel	4WD	3449	100	136	09.93-07.96	■
G-MODELL (W463) 06.89-11.00					Open Off-Road Vehicle (Off-Road SUV-J Segment)			
G 320 (V6) (463.209) (M 112.945)		Gasolina	4WD	3199	158	215	05.97-11.00	■
G 500 (463.206) (M 113.962)		Gasolina	4WD	4966	218	296	01.98-11.00	■
G 55 AMG (463.206) (M 113.982)		Gasolina	4WD	5439	260	354	07.99-11.00	■
300 GD (463.307) (OM 603.931)		Diesel	4WD	2996	83	113	07.89-08.93	■
G 300 Diesel (463.307) (OM 603.931)		Diesel	4WD	2996	83	113	09.93-07.94	■

LISTA DE APLICACIONES - BUYERS GUIDE

G 300 Turbodiesel (463.330, 463.331) (OM 606.964)		Diesel	4WD	2996	130	177	01.96-11.00	■
350 GD Turbo (463.300) (OM 603.972)		Diesel	4WD	3449	100	136	09.91-08.93	■
G 350 Turbo (463.300) (OM 603.972)		Diesel	4WD	3449	100	136	09.93-08.96	■
G-MODELL (W460) 03.79-12.91					Van (Off-Road SUV-J Segment)			
230 G (460.220, 460.221) (M 102.944)		Gasolina	4WD	2299	80	109	01.86-06.89	■
230 GE (460.228, 460.229) (M 102.987)		Gasolina	4WD	2299	90	122	01.86-12.91	■
230 GE (461.229) (M 102.979)		Gasolina	4WD	2299	90	122	11.91-08.96	■
230 GE (461.229) (M 102.996)		Gasolina	4WD	2299	90	122	11.91-08.96	■
230 GE (460.228, 460.229) (M 102.981)		Gasolina	4WD	2299	92	125	03.79-12.91	■
230 GE (460.228, 460.229) (M 102.987)		Gasolina	4WD	2299	92	125	03.79-12.91	■
230 G (460.220, 460.221) (M 115.973)		Gasolina	4WD	2307	66	90	03.79-08.85	■
230 G (460.220, 460.221) (M 115.973)		Gasolina	4WD	2307	75	102	03.79-08.85	■
280 GE (460.222, 460.223) (M 110.994)		Gasolina	4WD	2746	110	150	01.86-12.91	■
280 GE (460.222, 460.223) (M 110.994)		Gasolina	4WD	2746	115	156	03.79-12.91	■
240 GD (460.320, 460.321) (OM 616.936)		Diesel	4WD	2399	53	72	03.79-09.87	■
240 GD (460.320, 460.321) (OM 616.938)		Diesel	4WD	2399	53	72	03.79-09.87	■
250 GD (460.328) (OM 602.930)		Diesel	4WD	2497	62	84	10.87-12.91	■
290 GD (461.328) (OM 602.942)		Diesel	4WD	2874	70	95	10.91-12.97	■
290 GD (461.328) (OM 602.947)		Diesel	4WD	2874	70	95	10.91-12.97	■
290 GD Turbodiesel (461.335, 461.336) (OM 602.983)		Diesel	4WD	2874	88	120	04.97-12.01	■
300 GD (460.322, 460.323) (OM 617.931)		Diesel	4WD	2998	59	80	03.79-08.79	■
300 GD (460.322, 460.323) (OM 617.932)		Diesel	4WD	2998	59	80	03.79-08.79	■
300 GD (460.322, 460.323) (OM 617.931)		Diesel	4WD	2998	65	88	09.79-12.91	■
300 GD (460.322, 460.323) (OM 617.932)		Diesel	4WD	2998	65	88	09.79-12.91	■
VW								
LT 28-35 (2DB, 2DE, 2DK) 04.96-07.06					Bus (Minibus-M2-Segment)			
2.5 SDI (AGX)	-06/01, Type LT35	Diesel	RWD	2461	55	75	07.96-07.06	■
2.5 TDI (APA)	Type LT35	Diesel	RWD	2461	66	90	05.99-07.06	■
2.5 TDI (AHD)	Type LT35	Diesel	RWD	2461	75	102	05.96-08.99	■
2.5 TDI (ANJ)	-06/01, Type LT35	Diesel	RWD	2461	80	109	05.99-07.06	■
2.5 TDI (AVR)	-06/01, Type LT35	Diesel	RWD	2461	80	109	05.99-07.06	■
2.8 TDI (AGK)	Type LT35	Diesel	RWD	2798	92	125	07.97-05.03	■
2.8 TDI (ATA)	Type LT35	Diesel	RWD	2798	96	131	01.99-01.02	■
LT 28-46 (2DC, 2DF, 2DG, 2DL, 2DM) 04.96-07.06					Platform/Chassis (LCVs-N1 Segment)			
2.3 (AGL)	-06/01, Type LT35	Gasolina	RWD	2295	105	143	06.96-07.06	■
2.5 SDI (AGX)	-06/01, Type LT35	Diesel	RWD	2461	55	75	09.96-07.06	■
2.5 TDI (APA)	-06/01, Type LT35	Diesel	RWD	2461	66	90	05.99-07.06	■
2.5 TDI (AHD)	Type LT35	Diesel	RWD	2461	75	102	06.96-08.99	■
2.5 TDI (ANJ)	-06/01, Type LT35	Diesel	RWD	2461	80	109	05.99-07.06	■
2.5 TDI (AVR)	-06/01, Type LT35	Diesel	RWD	2461	80	109	05.99-07.06	■
2.8 TDI (AGK)	Type LT35	Diesel	RWD	2799	92	125	07.97-01.02	■
2.8 TDI (ATA)	-07/01, Type LT35	Diesel	RWD	2799	96	130	01.99-07.06	■
LT 28-46 (2DA, 2DD, 2DH) 04.96-07.06					Van (LCVs-N1 Segment)			
2.3 (AGL)	-07/01, Type LT35	Gasolina	RWD	2295	105	143	05.96-07.06	■
2.5 SDI (AGX)	-07/01	Diesel	RWD	2461	55	75	09.96-07.06	■
2.5 TDI (APA)	-06/01, Type LT35	Diesel	RWD	2461	66	90	05.99-07.06	■
2.5 TDI (AHD)	Type LT35	Diesel	RWD	2461	75	102	05.96-08.99	■
2.5 TDI (ANJ)	-06/01, Type LT35	Diesel	RWD	2461	80	109	05.99-07.06	■
2.5 TDI (AVR)	-06/01, Type LT35	Diesel	RWD	2461	80	109	05.99-07.06	■

LISTA DE APLICACIONES - BUYERS GUIDE

2.8 TDI (AGK)	Type LT35	Diesel	RWD	2799	92	125	07.97-01.02
2.8 TDI (ATA)	-07/01, Type LT35	Diesel	RWD	2799	96	130	01.99-07.06

