

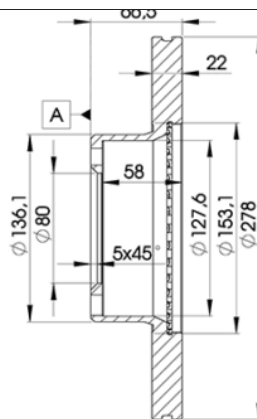
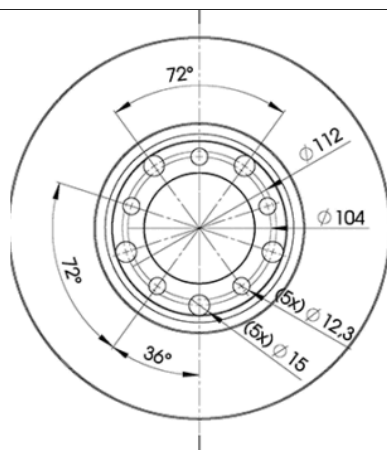
# LISTA DE APLICACIONES - BUYERS GUIDE

## 78BD0205-2



Weight: 12.840

O.E.M.	MAKE
116 420 01 72	MERCEDES-BENZ
116 420 02 05	MERCEDES-BENZ
1164200105	MERCEDES-BENZ
A1164200105	MERCEDES-BENZ
A1164200172	MERCEDES-BENZ
A1164200205	MERCEDES-BENZ



## 78BD0205-2

**E1 90R-02C0074/0002**



Ø278x22x66.5

**MAKE**  
MERCEDES-BENZ



Trac.	CC	Kw	CV
-------	----	----	----



Front / Rear

### MERCEDES-BENZ

#### S-Class (W116) 08.72-07.80

#### Saloon (Luxury car-F Segment)

280 S (116.020) (M 110.922)	09/72-	Gasolina	RWD	2746	115	156	08.72-07.80	■
280 S (116.020) (M 110.922)	09/72-	Gasolina	RWD	2746	118	160	08.72-07.80	■
280 SE, SEL (116.024, 116.025) (M 110.985)		Gasolina	RWD	2746	130	177	08.72-07.80	■
280 SE, SEL (116.024, 116.025) (M 110.983)	01/74-, -04/80	Gasolina	RWD	2746	136	185	08.72-07.80	■
280 SE, SEL (116.024, 116.025) (M 110.985)	01/74-, -04/80	Gasolina	RWD	2746	136	185	08.72-07.80	■
350 SE, SEL (116.028, 116.029) (M 116.985)	01/80-	Gasolina	RWD	3499	143	194	03.76-03.80	■
350 SE, SEL (116.028, 116.029) (M 116.983)	11/73-, -07/75	Gasolina	RWD	3499	147	200	08.72-02.76	■
350 SE, SEL (116.028, 116.029) (M 116.985)	01/80-	Gasolina	RWD	3499	151	205	03.76-03.80	■
450 SE (M 117.983)		Gasolina	RWD	4520	143	194	08.72-12.76	■
450 SE,SEL (116.033) (M 117.983)		Gasolina	RWD	4520	160	218	12.75-04.80	■
450 SE,SEL (116.033) (M 117.986)		Gasolina	RWD	4520	160	218	12.75-04.80	■
450 SE, SEL (116.032) (M 117.983)	01/76-	Gasolina	RWD	4520	165	224	01.73-04.80	■
450 SE, SEL (116.032) (M 117.986)	01/76-	Gasolina	RWD	4520	165	224	01.73-04.80	■
450 SEL 6.9 (116.036) (M 100.985)		Gasolina	RWD	6834	210	286	07.75-03.80	■

#### S-Class II (W126) 10.79-06.91

#### Saloon (Luxury car-F Segment)

3.8 (126.035, 126.034) (M 116.961)		Gasolina	RWD	3818	160	218	08.80-08.84	■
------------------------------------	--	----------	-----	------	-----	-----	-------------	---

#### SL-Class III (R107) 05.71-12.89

#### Convertible (Executive car-E Segment)

280 SL (107.042) (M 110.982)	-08/78, -ch 007869	Gasolina	RWD	2746	130	177	06.76-09.81	■
280 SL (107.042) (M 110.986)	-08/78, -ch 007869	Gasolina	RWD	2746	130	177	06.76-09.81	■
280 SL (107.042) (M 110.990)	-08/78, -ch 007869	Gasolina	RWD	2746	130	177	06.76-09.81	■
280 SL (107.042) (M 110.982)	09/74-, -08/78	Gasolina	RWD	2746	136	185	08.74-07.85	■
280 SL (107.042) (M 110.986)	09/74-, -08/78	Gasolina	RWD	2746	136	185	08.74-07.85	■

## LISTA DE APLICACIONES - BUYERS GUIDE

280 SL (107.042) (M 110.990)	09/74-, -08/78	Gasolina	RWD	2746	136	185	08.74-07.85	■	
350 SL (107.043) (M 116.982)	ch- 009600	Gasolina	RWD	3499	143	195	05.71-02.80	■	
350 SL (107.043) (M 116.984)	ch- 009600	Gasolina	RWD	3499	143	195	05.71-02.80	■	
450 SL (107.044) (M 117.982)	-07/76, -ch 062584	Gasolina	RWD	4520	160	218	09.75-10.80	■	
450 SL (107.044) (M 117.985)	-07/76, -ch 062584	Gasolina	RWD	4520	160	218	09.75-10.80	■	
450 SL (107.044) (M 117.982)	03/73-, -07/76, -ch 062584	Gasolina	RWD	4520	165	224	10.72-10.80	■	
450 SL (107.044) (M 117.985)	03/73-, -07/76, -ch 062584	Gasolina	RWD	4520	165	224	10.72-10.80	■	
<b>SL-Class III (C107) 01.72-08.85</b>							<b>Coupe (Executive car-E Segment)</b>		
280 SLC (107.022) (M 110.982)	-07/79, -ch 008365	Gasolina	RWD	2746	130	177	06.76-09.81	■	
280 SLC (107.022) (M 110.986)	-07/79, -ch 008365	Gasolina	RWD	2746	130	177	06.76-09.81	■	
280 SLC (107.022) (M 110.990)	-07/79, -ch 008365	Gasolina	RWD	2746	130	177	06.76-09.81	■	
280 SLC (107.022) (M 110.982)	09/74-, -07/79, -ch 008365	Gasolina	RWD	2746	136	185	08.74-09.81	■	
280 SLC (107.022) (M 110.986)	09/74-, -07/79, -ch 008365	Gasolina	RWD	2746	136	185	08.74-09.81	■	
280 SLC (107.022) (M 110.990)	09/74-, -07/79, -ch 008365	Gasolina	RWD	2746	136	185	08.74-09.81	■	
350 SLC (107.023) (M 116.982)	ch- 005716	Gasolina	RWD	3499	143	195	03.76-02.80	■	
350 SLC (107.023) (M 116.984)	ch- 005716	Gasolina	RWD	3499	143	195	03.76-02.80	■	
350 SLC (107.023) (M 116.982)	ch- 005716	Gasolina	RWD	3499	147	200	01.72-02.76	■	
350 SLC (107.023) (M 116.984)	ch- 005716	Gasolina	RWD	3499	147	200	01.72-02.76	■	
450 SLC (107.024) (M 117.982)	-07/76, -ch 030280	Gasolina	RWD	4520	160	218	09.75-08.79	■	
450 SLC (107.024) (M 117.985)	-07/76, -ch 030280	Gasolina	RWD	4520	160	218	09.75-08.79	■	
450 SLC (107.024) (M 117.982)	03/73-, -ch 030280	Gasolina	RWD	4520	165	225	01.73-11.75	■	
450 SLC (107.024) (M 117.985)	03/73-, -ch 030280	Gasolina	RWD	4520	165	225	01.73-11.75	■	
450 SLC 5.0 (107.026) (M 117.960)	-07/79, -ch 001627	Gasolina	RWD	4973	177	241	06.78-02.80	■	