

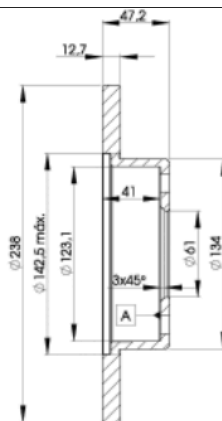
# LISTA DE APLICACIONES - BUYERS GUIDE

## 78BD0829-2



Weight: 7.684

O.E.M.	MAKE
EJP7368	ROVER
GDB90819	ROVER
GDB90829	ROVER



## 78BD0829-2



Ø238x12.7x47.2

**MAKE**  
ROVER



Trac.	CC	Kw	CV
-------	----	----	----



Front / Rear

### ROVER

						Convertible (Compact car-C Segment)			
<b>200 II (XW) 04.90-11.99</b>									
214 1.4 (14 K4C)	-09/97	Gasolina	FWD	1396	66	90	01.92-11.99	■	
214 1.4 (14 K4D)	-09/97	Gasolina	FWD	1396	66	90	01.92-11.99	■	
214 1.4 (14 K4C)		Gasolina	FWD	1396	70	95	04.90-09.92	■	
214 1.4i 16V (14 K4F)	-09/97	Gasolina	FWD	1396	76	103	01.93-11.99	■	
216 1.6i (D 16 A8)		Gasolina	FWD	1590	90	122	01.92-11.99	■	
<b>200 II (XW) 10.92-06.99</b>						Coupe (Compact car-C Segment)			
216 (D 16 A8)	-12/95	Gasolina	FWD	1590	90	122	10.92-06.99	■	
<b>200 II (XW) 10.89-12.95</b>						Hatchback (Compact car-C Segment)			
214 (14 K2A)	vehicles without ABS	Gasolina	FWD	1396	55	75	09.93-12.95	■	
214 (14 K2D)	vehicles without ABS	Gasolina	FWD	1396	55	75	09.93-12.95	■	
214 Si/Gsi (14 K4C)		Gasolina	FWD	1396	66	90	10.89-10.95	■	
214 Si/Gsi (14 K4D)		Gasolina	FWD	1396	66	90	10.89-10.95	■	
214 GSi/Si (14 K4C)		Gasolina	FWD	1396	70	95	01.90-10.95	■	
214 GSi/Si (14 K4F)		Gasolina	FWD	1396	76	103	12.92-10.95	■	
216 GSi (D 16 Z2)		Gasolina	FWD	1590	82	112	01.90-12.95	■	
216 GSi (D 16 A7)		Gasolina	FWD	1590	85	116	10.89-10.95	■	
216 GTi (D 16 A8)		Gasolina	FWD	1590	90	122	01.90-10.95	■	
216 GTi (D 16 A9)		Gasolina	FWD	1590	96	130	09.90-10.95	■	
218 TD (XUD 7TE)	vehicles without ABS	Diesel	FWD	1769	65	88	09.91-10.95	■	
218d (XUD9)	vehicles without ABS	Diesel	FWD	1905	52	71	09.91-10.95	■	

# LISTA DE APLICACIONES - BUYERS GUIDE

400 III (RT) 05.95-03.00					Hatchback (Compact car-C Segment)			
414 (14 K2F)	-06/97	Gasolina	FWD	1396	55	75	03.96-12.97	■
414 Si (14 K4F)	-06/97	Gasolina	FWD	1396	76	103	05.95-03.00	■
400 III (RT) 03.95-03.00					Saloon (Compact car-C Segment)			
414 Si (14 K4F)	-06/97	Gasolina	FWD	1396	76	103	05.95-03.00	■
416 Si (16 K4F)	-06/97	Gasolina	FWD	1588	82	112	05.95-03.00	■
416 Si (D 16 Y3)	-06/97	Gasolina	FWD	1590	83	113	03.95-06.99	■
400 I-II (XW) 04.90-04.95					Saloon (Compact car-C Segment)			
414 GSI/SI (14 K4C)	vehicles without ABS	Gasolina	FWD	1396	66	90	04.90-04.95	■
414 GSI/SI (14 K4D)	vehicles without ABS	Gasolina	FWD	1396	66	90	04.90-04.95	■
414 (14 K4C)	vehicles without ABS	Gasolina	FWD	1396	70	95	01.93-04.95	■
414 GSI/SI Cat (14 K4F)	vehicles without ABS	Gasolina	FWD	1396	76	103	10.92-04.95	■
416 GSI/GSE (D 16 A7)	vehicles without ABS	Gasolina	FWD	1590	85	116	04.90-04.95	■
418 TD (XUD 7TE)	vehicles without ABS	Diesel	FWD	1769	65	88	09.91-04.95	■
418 D (XUD9)	vehicles without ABS	Diesel	FWD	1905	49	67	09.91-04.95	■
400 I-II Tourer (XW) 09.93-11.98					Estate (Compact car-C Segment)			
1.8 TD (XUD 7TE)		Diesel	FWD	1769	65	88	09.93-11.98	■