

# LISTA DE APLICACIONES - BUYERS GUIDE

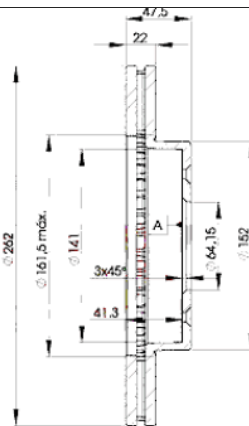
## 78BD0830-2



8 424073 142696

Weight: 9.932

O.E.M.	MAKE
44400-SK3-E10	HONDA
45251-SK3-E00	HONDA
EAP9579	ROVER
EGP1143	ROVER
EJP9579EVA	ROVER
GBD830	ROVER
GBD90820	ROVER
GBD90830	ROVER



## 78BD0830-2



Ø262x22x47.5

MAKE
HONDA
ROVER



Trac.	CC	Kw	CV
-------	----	----	----



Front / Rear

### HONDA

#### CONCERTO (HW, MA) 08.89-10.96

#### Hatchback (Compact car-C Segment)

1.4 (D14A1)	Gasolina	FWD	1396	61	83	10.89-10.92	■
1.4 (D14A1)	Gasolina	FWD	1396	66	90	08.89-10.91	■
1.4 (D14A8)	Gasolina	FWD	1396	66	90	08.89-10.91	■
1.5 i 16V (MA1) (D15B2)	Gasolina	FWD	1493	66	90	08.89-03.95	■
1.6 16V (D16Z2)	Gasolina	FWD	1590	78	106	08.89-03.95	■
1.6 i 16V (D16Z2)	Gasolina	FWD	1590	82	112	08.89-03.95	■
1.6 i 16V (HW) (D16A8)	Gasolina	FWD	1590	90	122	08.89-03.95	■
1.6 i 16V (HW) (D16Z4)	Gasolina	FWD	1590	90	122	08.89-03.95	■
1.6 (D16A9)	Gasolina	FWD	1590	96	131	10.89-10.92	■
1.8 TD	Diesel	RWD	1769	58	79	08.94-10.96	■
1.8 TD	Diesel	RWD	1769	65	88	08.94-10.96	■

#### CONCERTO (HWW) 08.89-05.95

#### Saloon (Compact car-C Segment)

1.4 (D14A1)	Gasolina	FWD	1396	61	83	10.89-10.92	■
1.4 (D14A1)	Gasolina	FWD	1396	66	90	08.89-10.91	■
1.4 (D14A8)	Gasolina	FWD	1396	66	90	08.89-10.91	■
1.5 i 16V (D15B2)	Gasolina	FWD	1493	66	90	08.89-05.95	■
1.6 16V (D16Z2)	Gasolina	FWD	1590	78	106	08.89-03.95	■
1.6 i 16V (D16Z2)	Gasolina	FWD	1590	82	112	08.89-03.95	■
1.6 i 16V (D16A8)	Gasolina	FWD	1590	90	122	08.89-03.95	■
1.6 i 16V (D16Z4)	Gasolina	FWD	1590	90	122	08.89-03.95	■
1.6 (D16A9)	Gasolina	FWD	1590	96	131	10.89-10.92	■

### ROVER

# LISTA DE APLICACIONES - BUYERS GUIDE

200 II (XW) 04.90-11.99					Convertible (Compact car-C Segment)			
214 1.4 (14 K4C)	-09/97	Gasolina	FWD	1396	66	90	01.92-11.99	■
214 1.4 (14 K4D)	-09/97	Gasolina	FWD	1396	66	90	01.92-11.99	■
214 1.4 (14 K4C)		Gasolina	FWD	1396	70	95	04.90-09.92	■
214 1.4i 16V (14 K4F)	-09/97	Gasolina	FWD	1396	76	103	01.93-11.99	■
216 1.6i 16V (16 K4F)	-02/96	Gasolina	FWD	1588	82	111	01.96-11.99	■
216 1.6 (D 16 Z2)		Gasolina	FWD	1590	82	111	04.90-02.96	■
216 1.6i (D 16 A8)	-02/96	Gasolina	FWD	1590	90	122	01.92-11.99	■
200 II (XW) 10.92-06.99					Coupe (Compact car-C Segment)			
216 (D 16 A8)		Gasolina	FWD	1590	90	122	10.92-06.99	■
220 GSi (20 T4H)	vehicles without ABS	Gasolina	FWD	1994	100	136	05.94-06.99	■
220TURBO (20 T4G)	vehicles without ABS	Gasolina	FWD	1994	147	200	10.92-06.99	■
200 II (XW) 10.89-12.95					Hatchback (Compact car-C Segment)			
214 (14 K2A)	vehicles with ABS	Gasolina	FWD	1396	55	75	09.93-12.95	■
214 (14 K2D)	vehicles with ABS	Gasolina	FWD	1396	55	75	09.93-12.95	■
216 GSi (D 16 Z2)		Gasolina	FWD	1590	82	112	01.90-12.95	■
216 GSi (D 16 A7)		Gasolina	FWD	1590	85	116	10.89-10.95	■
216 GTi (D 16 A8)		Gasolina	FWD	1590	90	122	01.90-10.95	■
216 GTi (D 16 A9)		Gasolina	FWD	1590	96	130	09.90-10.95	■
220 GTi (20 T4H)		Gasolina	FWD	1994	100	136	01.93-10.95	■
220 GTi (20 M4F)		Gasolina	FWD	1994	103	140	09.91-10.95	■
220TURBO (20 T4G)		Gasolina	FWD	1994	147	200	01.93-12.95	■
2.0		Gasolina	FWD	1994	152	207	10.92-12.95	■
218 TD (XUD 7TE)	vehicles with ABS	Diesel	FWD	1769	65	88	09.91-10.95	■
218d (XUD9)		Diesel	FWD	1905	47	64	09.91-09.92	■
218d (XUD9)	vehicles with ABS	Diesel	FWD	1905	52	71	09.91-10.95	■
200 III (RF) 11.95-11.00					Hatchback (Compact car-C Segment)			
1.4 (14 K4D)		Gasolina	FWD	1396	66	90	01.96-12.97	■
220 SDi (20 T2N)		Diesel	FWD	1994	77	105	11.95-03.00	■
400 III (RT) 05.95-03.00					Hatchback (Compact car-C Segment)			
416 Si (D 16 Y3)		Gasolina	FWD	1590	83	113	06.95-03.00	■
400 I-II (XW) 04.90-04.95					Saloon (Compact car-C Segment)			
414 GSi/SI (14 K4C)	vehicles with ABS	Gasolina	FWD	1396	66	90	04.90-04.95	■
414 GSi/SI (14 K4D)	vehicles with ABS	Gasolina	FWD	1396	66	90	04.90-04.95	■
414 (14 K4C)	vehicles with ABS	Gasolina	FWD	1396	70	95	01.93-04.95	■
414 GSi/SI Cat (14 K4F)	vehicles with ABS	Gasolina	FWD	1396	76	103	10.92-04.95	■
416 GSi/GSE (D 16 A7)		Gasolina	FWD	1590	85	116	04.90-04.95	■
416 GTi (D 16 A8)		Gasolina	FWD	1590	90	122	04.90-04.95	■
416 GTi/GTE (D 16 A9)		Gasolina	FWD	1590	96	131	04.90-04.95	■
420 Turbo (20 T4G)		Gasolina	FWD	1994	147	200	01.93-04.95	■
2.0 Turbo GSi Sport		Gasolina	FWD	1994	152	207	10.92-04.95	■
418 TD (XUD 7TE)	vehicles with ABS	Diesel	FWD	1769	65	88	09.91-04.95	■
418 D (XUD9)	vehicles with ABS	Diesel	FWD	1905	49	67	09.91-04.95	■
400 I-II Tourer (XW) 09.93-11.98					Estate (Compact car-C Segment)			
1.6 i (D 16 Z2)		Gasolina	FWD	1590	82	112	05.94-11.98	■
1.6 i (D 16 A8)		Gasolina	FWD	1590	90	122	05.94-11.98	■