

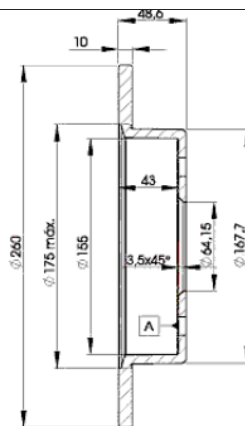
LISTA DE APLICACIONES - BUYERS GUIDE

78BD0835-2



Weight: 7.810

O.E.M.	MAKE
42510-SM4-950	HONDA
42510-SN7-000	HONDA
42510-SV1-A00	HONDA
42510-SV4-A00	HONDA
GBD835	ROVER
GBD90835	ROVER
SDB100290EVA	ROVER



78BD0835-2

E1 90R-02C0100/0035



Ø260x10x48.6

MAKE
ACURA
HONDA
ROVER



Trac.	CC	Kw	CV	
				Front / Rear

ACURA

CL 10.96-09.03

Coupe (Luxury car-F Segment)

2.2	Gasolina	FWD	2156	108	147	10.96-09.97	■
3.0 Vtec	Gasolina	FWD	2997	149	203	10.96-09.00	■

VIGOR III 09.91-09.94

Saloon (Executive car-E Segment)

2.5 (G25A)	Gasolina	FWD	2451	140	190	09.91-09.94	■
------------	----------	-----	------	-----	-----	-------------	---

HONDA

ACCORD IV (CB, CC) 05.89-12.93

Coupe (Executive car-E Segment)

2.0 i 16V (CC1) (F20A7)	Gasolina	FWD	1997	98	133	01.92-09.93	■
-------------------------	----------	-----	------	----	-----	-------------	---

ACCORD IV (CB) 11.89-12.93

Saloon (Executive car-E Segment)

2.0 i (F20A5)	Gasolina	FWD	1997	99	135	09.90-04.93	■
2.2 (CB3, CB7) (F22A6)	Gasolina	FWD	2156	103	140	10.91-10.93	■
2.2 (CB3, CB7) (F22A9)	Gasolina	FWD	2156	103	140	10.91-10.93	■
2.2 i 16V Automatik (CB7) (F22A3)	Gasolina	FWD	2156	108	147	01.90-03.93	■
2.2 i 16V (CB7) (F22A3)	Gasolina	FWD	2156	110	150	01.90-03.93	■

ACCORD IV Aerodeck (CB) 09.89-02.94

Estate (Executive car-E Segment)

2.0 i 16V (CC9) (F20Z3)	Gasolina	FWD	1997	98	133	03.93-12.93	■
2.2 (CB8, CB9) (F22A6)	Gasolina	FWD	2156	103	140	05.92-12.93	■
2.2 i 16V (CB8) (F22A8)	Gasolina	FWD	2156	108	147	01.91-12.93	■
2.2 i 16V (CB8) (F22A7)	Gasolina	FWD	2156	110	150	01.91-12.93	■

ACCORD V (CD) 04.93-12.98

Coupe (Executive car-E Segment)

2.0 (CD9) (F20B3)	Gasolina	FWD	1997	100	136	09.93-12.97	■
2.2 i ES (CD7) (F22B5)	Gasolina	FWD	2156	110	150	09.93-02.98	■

LISTA DE APLICACIONES - BUYERS GUIDE

ACCORD V (CC, CD) 06.92-12.97					Saloon (Executive car-E Segment)			
1.8 i (CE7) (F18A3)		Gasolina	FWD	1850	85	116	02.96-10.98	■
1.9 i (CE7) (F18A3)		Gasolina	FWD	1850	85	116	02.96-10.98	■
2.0 i (CD4) (F20Z2)		Gasolina	FWD	1997	85	116	03.93-01.96	■
2.0 i LS (CE8) (F20Z1)		Gasolina	FWD	1997	96	131	02.96-10.98	■
2.0 i S (CD4) (F20Z1)		Gasolina	FWD	1997	96	131	03.93-01.96	■
2.2 (CD5)		Gasolina	FWD	2156	103	140	04.96-12.97	■
2.2 (CE1)		Gasolina	FWD	2156	107	146	09.95-06.96	■
2.2 Vti (SV4, CD5) (F22B1)		Gasolina	FWD	2156	108	147	01.94-12.97	■
2.2 Vti (SV4, CD5) (F22B4)		Gasolina	FWD	2156	108	147	01.94-12.97	■
2.2 i (CD5)		Gasolina	FWD	2156	110	150	04.93-06.97	■
2.2 i VTEC (CE9) (F22Z2)		Gasolina	FWD	2156	110	150	02.96-10.98	■
2.3 i SR (CD6) (H23A3)		Gasolina	FWD	2259	116	158	03.93-01.96	■
2.0 TDi (CF1) (20T2N)		Diesel	FWD	1994	77	105	04.96-10.98	■
ACCORD V Aerodeck (CE) 04.93-02.98					Estate (Executive car-E Segment)			
2.0 i LS 16V (CE2) (F20B3)		Gasolina	FWD	1997	100	136	09.93-02.98	■
2.2 i ES (CE1) (F22B5)		Gasolina	FWD	2156	110	150	09.93-02.98	■
ACCORD VI (CK, CG, CH, CF, CL) 03.97-12.03					Saloon (Executive car-E Segment)			
3.0 Vtec (CK1, CG1) (J30A1)		Gasolina	FWD	2997	147	200	03.97-12.03	■
CIVIC VI (MA, MB) 09.94-02.01					Hatchback (Supermini car-B Segment)			
1.6 (MB4) (D16W4)		Gasolina	FWD	1590	92	125	11.98-02.01	■
1.6 (MB4) (D16W4)		Gasolina	FWD	1590	92	125	11.98-03.01	■
1.8 16V (MB6) (B18C4)		Gasolina	FWD	1797	124	169	01.97-02.01	■
ROVER								
600 (RH) 08.93-10.00					Saloon (Compact executive car-D Segment)			
618 i/Si (F 18 A3)	Automatic Transmiss.	Gasolina	FWD	1850	85	115	03.96-02.99	■
620 Ti Vitesse (20 T4G)	Automatic Transmiss.	Gasolina	FWD	1994	147	200	05.94-08.98	■
620 i (F 20 Z2)	Automatic Transmiss.	Gasolina	FWD	1997	85	115	08.93-06.96	■
620 Si (F 20 Z1)	Automatic Transmiss.	Gasolina	FWD	1997	96	131	08.93-02.99	■
623 Si (H 23 A3)		Gasolina	FWD	2259	116	158	08.93-06.99	■
620 Sdi (20 T2N)		Diesel	FWD	1994	77	105	05.94-06.99	■