

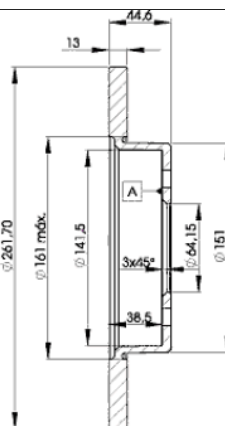
LISTA DE APLICACIONES - BUYERS GUIDE

78BD0841-2



Weight: 9.012

O.E.M.	MAKE
GBD90841	ROVER
SDB100500	ROVER



78BD0841-2

E1 90R-02C0415/0009



Ø262x13x44.6

MAKE
ROVER



Trac.	CC	Kw	CV		
					Front / Rear

ROVER

						Convertible (Compact car-C Segment)			
200 II (XW) 04.90-11.99									
214 1.4 (14 K4C)	10/92-, -06/99	Gasolina	FWD	1396	66	90	01.92-11.99		■
214 1.4 (14 K4D)	10/92-, -06/99	Gasolina	FWD	1396	66	90	01.92-11.99		■
214 1.4i 16V (14 K4F)	-06/99	Gasolina	FWD	1396	76	103	01.93-11.99		■
216 1.6i 16V (16 K4F)	-06/99	Gasolina	FWD	1588	82	111	01.96-11.99		■
216 1.6 (D 16 Z2)		Gasolina	FWD	1590	82	111	04.90-02.96		■
200 II (XW) 10.92-06.99						Coupe (Compact car-C Segment)			
216 (16 K4F)		Gasolina	FWD	1588	82	112	01.96-12.97		■
200 II (XW) 10.89-12.95						Hatchback (Compact car-C Segment)			
214 GSi/Si (14 K4F)		Gasolina	FWD	1396	76	103	12.92-10.95		■
200 III (RF) 11.95-11.00						Hatchback (Compact car-C Segment)			
211 (11 K2D)		Gasolina	FWD	1120	44	60	01.98-03.00		■
214 i (14 K2F)	vehicles without ABS	Gasolina	FWD	1396	55	75	11.95-03.00		■
1.4 (14 K4D)	vehicles without ABS	Gasolina	FWD	1396	66	90	01.96-12.97		■
214 Si (14 K4F)	vehicles without ABS	Gasolina	FWD	1396	76	103	11.95-03.00		■
216 Si (16 K4F)	vehicles without ABS	Gasolina	FWD	1588	82	112	11.95-06.99		■
220 D/SD (20 T2R)		Diesel	FWD	1994	63	86	11.95-03.00		■
25 (RF) 09.99-06.06						Hatchback (Compact car-C Segment)			
1.1	vehicles without ABS	Gasolina	FWD	1120	44	60	11.99-05.05		■
1.1 (11 K4F)	vehicles without ABS	Gasolina	FWD	1120	55	75	09.99-06.01		■
1.1 16V (11 K4F)	vehicles without ABS	Gasolina	FWD	1120	55	75	01.04-05.05		■
1.4 16V (14 K4M)	vehicles without ABS	Gasolina	FWD	1396	62	84	10.99-05.05		■

LISTA DE APLICACIONES - BUYERS GUIDE

1.4 16V (14 K4F)	vehicles without ABS	Gasolina	FWD	1396	76	103	10.99-05.05	■
1.6 16V (16 K4F)	vehicles without ABS	Gasolina	FWD	1588	80	109	10.99-05.05	■
2.0 iDT (20 T2N)	vehicles without ABS	Diesel	FWD	1994	74	101	10.99-05.05	■
2.0 iDT (20 T2N)		Diesel	FWD	1994	83	113	01.02-12.04	■
25 COMMERCE (RF) 01.03-12.05					Hatchback Van (Compact car-C Segment)			
1.4 (14 K4M)	vehicles without ABS	Gasolina	FWD	1396	62	84	01.03-12.05	■
2.0 iDT (20 T2N)	vehicles without ABS	Diesel	FWD	1994	74	101	01.03-12.05	■
400 III (RT) 05.95-03.00					Hatchback (Compact car-C Segment)			
414 (14 K2F)	06/97-, vehicles without ABS	Gasolina	FWD	1396	55	75	03.96-12.97	■
414 Si (14 K4F)	06/97-, vehicles without ABS	Gasolina	FWD	1396	76	103	05.95-03.00	■
416 Si (D16B2)		Gasolina	FWD	1590	85	116	06.95-03.00	■
420 Di (20 T2N)	vehicles without ABS	Diesel	FWD	1994	77	105	05.95-03.00	■
400 III (RT) 03.95-03.00					Saloon (Compact car-C Segment)			
414 (14 K2F)	vehicles without ABS	Gasolina	FWD	1396	55	75	03.96-12.99	■
414 Si (14 K4F)	06/97-, vehicles without ABS	Gasolina	FWD	1396	76	103	05.95-03.00	■
416 Si (16 K4F)	06/97-, vehicles without ABS	Gasolina	FWD	1588	82	112	05.95-03.00	■
416 Si (D 16 Y3)	06/97-, vehicles without ABS	Gasolina	FWD	1590	83	113	03.95-06.99	■
416 Si (D16B2)		Gasolina	FWD	1590	85	116	05.95-03.00	■
420 Di (20 T2N)	vehicles without ABS	Diesel	FWD	1994	77	105	05.95-03.00	■
45 (RT) 02.00-05.05					Hatchback (Compact car-C Segment)			
1.4 (14 K4F)	vehicles without ABS	Gasolina	FWD	1396	76	103	02.00-05.05	■
1.6 (16 K4F)	vehicles without ABS	Gasolina	FWD	1588	80	109	02.00-05.05	■
2.0 iDT (20 T2N)		Diesel	FWD	1994	83	113	01.04-05.05	■
45 (RT) 02.00-05.05					Saloon (Compact car-C Segment)			
1.4 (14 K4F)	vehicles without ABS	Gasolina	FWD	1396	76	103	02.00-05.05	■
1.6 (16 K4F)	vehicles without ABS	Gasolina	FWD	1588	80	109	02.00-05.05	■
2.0 iDT (20 T2N)		Diesel	FWD	1994	83	113	01.04-05.05	■
CDV (RF) 03.03-04.05					Hatchback Van (Compact car-C Segment)			
2.0 iDT (20 T2N)		Diesel	FWD	1994	74	101	03.03-04.05	■
COUPE 03.96-11.99					Coupe (Compact car-C Segment)			
1.6 16V (16 K4F)	-06/99	Gasolina	FWD	1588	82	111	03.96-11.99	■