

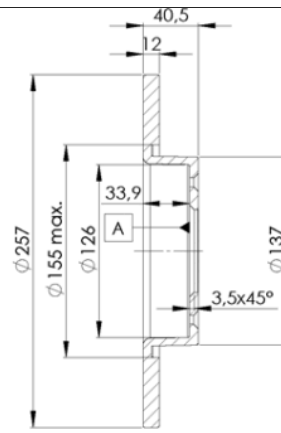
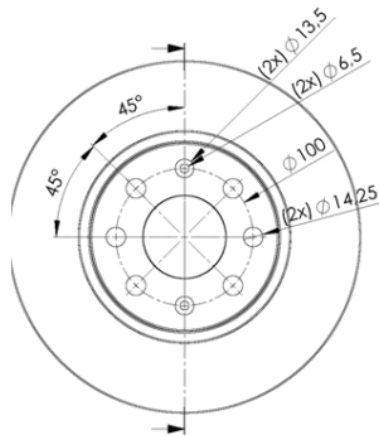
LISTA DE APLICACIONES - BUYERS GUIDE

78BD0918-2



Weight: 8.436

O.E.M.	MAKE
5 180 609 9	FIAT
5 180 610 3	FIAT
5 183 023 6	OPEL
5 570 039 8	FIAT
5 570 091 8	FIAT
5 69 022	OPEL
93 188 916	OPEL



78BD0918-2

(E) 90R-02C0415/0016



Ø257x12x40.7

MAKE
FIAT
OPEL
VAUXHALL



Trac.	CC	Kw	CV
-------	----	----	----



Front / Rear

FIAT

GRANDE PUNTO (199_) 06.05-

Hatchback (Supermini car-B Segment)

1.2 (199 A4.000)	Gasolina	FWD	1242	48	65	10.05-	■
------------------	----------	-----	------	----	----	--------	---

OPEL

CORSA D (S07) 07.06-

Hatchback (Supermini car-B Segment)

1.0 (L08, L68) (Z 10 XEP)	Gasolina	FWD	998	44	60	07.06-12.10	■
---------------------------	----------	-----	-----	----	----	-------------	---

VAUXHALL

CORSA Mk III (D) (S07) 07.06-08.14

Hatchback (Supermini car-B Segment)

1.0 (L08) (Z 10 XEP)	vehicles with ABS	Gasolina	FWD	998	44	60	08.06-08.14	■
----------------------	-------------------	----------	-----	-----	----	----	-------------	---