

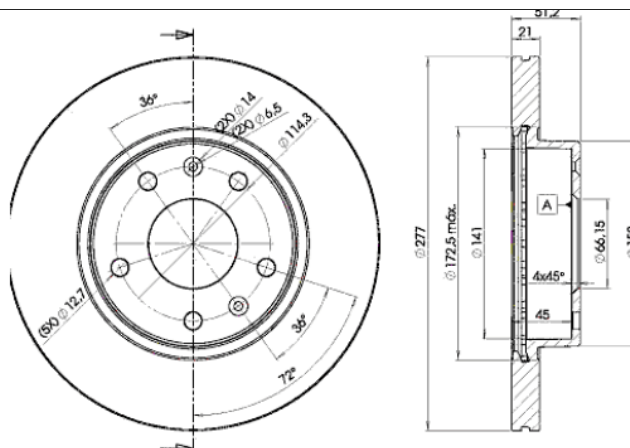
LISTA DE APLICACIONES - BUYERS GUIDE

78BD1010-2



Weight: 11.980

O.E.M.	MAKE
SDB000080	LAND ROVER
SDB101070	LAND ROVER



78BD1010-2

E1 90R-02C0452/0118



Ø277x21x51

MAKE
LAND ROVER



Trac.	CC	Kw	CV
-------	----	----	----



Front / Rear

LAND ROVER

FREELANDER (L314) 02.98-10.06

Closed Off-Road Vehicle (Compact SUV-J Segment)

1.8 16V 4x4 (18 K4F)		Gasolina	4WD	1796	86	117	04.98-10.06	■
2.5 V6 4x4 (25 K4F)		Gasolina	4WD	2497	130	177	11.00-10.06	■
2.0 Td4 4x4 (204D3)		Diesel	4WD	1951	80	109	03.01-10.06	■
2.0 Td4 4x4 (M 47)		Diesel	4WD	1951	82	112	11.00-10.06	■

FREELANDER (L314) 02.98-10.06

Open Off-Road Vehicle (Compact SUV-J Segment)

1.8 4x4 (18 K4F)		Gasolina	4WD	1796	86	117	10.00-10.06	■
1.8 i 16V 4x4 (18 K4F)	11/00-	Gasolina	4WD	1796	88	120	02.98-10.06	■
2.5 V6 4x4 (25 K4F)		Gasolina	4WD	2497	130	177	11.00-10.06	■
2.0 Td4 4x4 (204D3)		Diesel	4WD	1951	82	112	10.00-10.06	■
2.0 DI 4x4 (20 T2N)	10/00-	Diesel	4WD	1994	72	98	02.98-10.06	■