

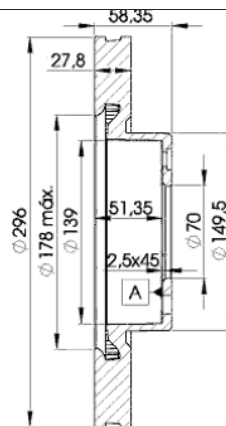
LISTA DE APLICACIONES - BUYERS GUIDE

78BD1134-2



Weight: 16.152

O.E.M.	MAKE
5 69 044	OPEL
5 69 045	OPEL
90 344 650	VAUXHALL
90 392 559	VAUXHALL
90 393 496	VAUXHALL
9039 2559	CADILLAC
93 182 283	VAUXHALL



78BD1134-2



90R-02C0452/0127



Ø296x27.8x58.3

MAKE
OPEL
VAUXHALL



Trac.	CC	Kw	CV
-------	----	----	----



Front / Rear

OPEL

OMEGA A (V87) 09.86-05.94

Estate (Executive car-E Segment)

2.6		Gasolina	FWD	2580	135	184	09.87-04.94	■
2.6 i (F35, M35) (C 26 NE)		Gasolina	RWD	2594	110	150	09.90-03.94	■
3.0 (F35, M35) (C 30 LE)	08/90-	Gasolina	RWD	2969	115	156	03.87-03.94	■
3.0 (F35, M35) (30 NE)	08/90-	Gasolina	RWD	2969	130	177	03.87-09.90	■
3.0 Cat (F35, M35) (C 30 NE)	09/90-	Gasolina	RWD	2969	130	177	03.87-03.94	■
3.0 24V (F35, M35) (C 30 SEJ)	09/90-	Gasolina	RWD	2969	147	200	09.89-03.94	■
3.0 24V Omega 3000 (F35, M35) (C 30 SE)		Gasolina	RWD	2969	150	204	09.88-04.94	■

OMEGA A (V87) 09.86-05.94

Saloon (Executive car-E Segment)

2.6 i (F19, M19, N19) (C 26 NE)		Gasolina	RWD	2594	110	150	09.90-03.94	■
3.0 (3000) (F19, M19, N19) (30 NE)	08/90-	Gasolina	RWD	2969	130	177	03.87-09.90	■
3.0 (3000) Cat (F19, M19, N19) (C 30 NE)	08/90-	Gasolina	RWD	2969	130	177	03.88-03.94	■
3.0 24V (3000) (F19, M19, N19) (C 30 SEJ)	09/90-	Gasolina	RWD	2969	147	200	09.89-03.94	■
3.0 24V (3000) (F19, M19, N19) (C 30 SE)		Gasolina	RWD	2969	150	204	09.89-03.94	■
3.0 24V Evolution500 (F19, M19, N19) (C 30 XE1)		Gasolina	RWD	2969	169	230	03.91-07.92	■
3.6 24V Lotus (F19, M19, N19) (C 36 GET)		Gasolina	RWD	3638	277	377	08.90-09.92	■

OMEGA B (V94) 03.94-07.03

Estate (Executive car-E Segment)

2.0 (F35, M35, P35)		Gasolina	RWD	1984	90	122	05.94-05.99	■
2.2 16V (F35, M35, P35) (Y 22 XE)		Gasolina	RWD	2198	106	144	09.99-07.03	■
2.2 16V (F35, M35, P35) (Z 22 XE)		Gasolina	RWD	2198	106	144	09.99-07.03	■
2.5 V6 (F35, M35, P35) (X 25 XE)		Gasolina	RWD	2498	125	170	03.94-09.00	■
2.6		Gasolina	FWD	2580	138	188	05.94-05.99	■
2.6 V6 (F35, M35, P35) (Y 26 SE)		Gasolina	RWD	2597	132	180	09.00-07.03	■

LISTA DE APLICACIONES - BUYERS GUIDE

3.0 V6 (F35, M35, P35) (X 30 XE)	-07/00	Gasolina	RWD	2962	155	211	04.94-02.01	■
3.2 V6 (F35, M35, P35) (Y 32 SE)		Gasolina	RWD	3175	160	218	02.01-07.03	■
2.0 DTI 16V (F35, M35, P35) (X 20 DTH)		Diesel	RWD	1995	74	101	09.97-09.00	■
2.2 DTI 16V (F35, M35, P35) (Y 22 DTH)		Diesel	RWD	2171	81	110	09.00-07.03	■
2.2 DTI 16V (F35, M35, P35) (Y 22 DTH)		Diesel	RWD	2171	88	120	09.00-07.03	■
2.5 TD (F35, M35, P35) (U 25 DT)		Diesel	RWD	2498	96	131	04.94-07.01	■
2.5 TD (F35, M35, P35) (U 25 TD)		Diesel	RWD	2498	96	131	04.94-07.01	■
2.5 TD (F35, M35, P35) (X 25 DT)		Diesel	RWD	2498	96	131	04.94-07.01	■
2.5 TD (F35, M35, P35) (X 25 TD)		Diesel	RWD	2498	96	131	04.94-07.01	■
2.5 DTI (F35, M35, P35) (Y 25 DT)		Diesel	RWD	2498	110	150	09.01-07.03	■
2.5 DTI (F35, M35, P35) (Y 25 TD)		Diesel	RWD	2498	110	150	09.01-07.03	■
OMEGA B (V94) 03.94-12.05					Saloon (Executive car-E Segment)			
2.2 16V (F69, M69, P69) (Y 22 XE)		Gasolina	RWD	2198	106	144	09.99-07.03	■
2.2 16V (F69, M69, P69) (Z 22 XE)		Gasolina	RWD	2198	106	144	09.99-07.03	■
2.5 V6 (F69, M69, P69) (X 25 XE)		Gasolina	RWD	2498	125	170	03.94-09.00	■
2.6 V6 (F69, M69, P69) (Y 26 SE)		Gasolina	RWD	2597	132	180	09.00-07.03	■
3.0 V6 (F69, M69, P69) (X 30 XE)	-07/00	Gasolina	RWD	2962	155	211	04.94-02.01	■
3.2 V6 (F69, M69, P69) (Y 32 SE)		Gasolina	RWD	3175	160	218	02.01-07.03	■
2.0 DTI 16V (F69, M69, P69) (X 20 DTH)		Diesel	RWD	1995	74	101	09.97-09.00	■
2.2 DTI 16V (F69, M69, P69) (Y 22 DTH)		Diesel	RWD	2171	81	110	09.00-07.03	■
2.2 DTI 16V (F69, M69, P69) (Y 22 DTH)		Diesel	RWD	2171	88	120	09.00-07.03	■
2.5 TD (F69, M69, P69) (U 25 DT)		Diesel	RWD	2498	96	130	04.94-07.03	■
2.5 TD (F69, M69, P69) (U 25 TD)		Diesel	RWD	2498	96	130	04.94-07.03	■
2.5 TD (F69, M69, P69) (X 25 DT)		Diesel	RWD	2498	96	130	04.94-07.03	■
2.5 TD (F69, M69, P69) (X 25 TD)		Diesel	RWD	2498	96	130	04.94-07.03	■
2.5 DTI (F69, M69, P69) (Y 25 DT)		Diesel	RWD	2498	110	150	09.01-07.03	■
2.5 DTI (F69, M69, P69) (Y 25 TD)		Diesel	RWD	2498	110	150	09.01-07.03	■
SENATOR B (V88) 09.87-09.93					Saloon (Luxury car-F Segment)			
2.6 i (P19) (C 26 NE)		Gasolina	RWD	2594	110	150	09.90-09.93	■
3.0 (P19) (C 30 LE)		Gasolina	RWD	2969	115	156	09.87-09.93	■
3.0 (P19) (30 NE)		Gasolina	RWD	2969	130	177	01.88-09.90	■
3.0 i Cat (P19) (C 30 NE)		Gasolina	RWD	2969	130	177	01.88-09.93	■
3.0 24V (P19) (C 30 SE)		Gasolina	RWD	2969	150	204	09.89-09.93	■
3.6 (P19) (C 36 NEI)		Gasolina	RWD	3615	147	200	09.91-08.93	■
VAUXHALL								
CARLTON Mk III (V87) 09.86-03.94					Estate (Executive car-E Segment)			
2.6 i (C 26 NE)		Gasolina	RWD	2594	110	150	09.90-03.94	■
CARLTON Mk III (V87) 09.86-03.94					Saloon (Executive car-E Segment)			
2.6 i (C 26 NE)		Gasolina	RWD	2594	110	150	09.90-03.94	■
OMEGA (B) (V94) 12.93-06.03					Estate (Executive car-E Segment)			
2.2 16V (Y 22 XE)		Gasolina	RWD	2198	106	144	02.94-06.03	■
2.2 16V (Z 22 XE)		Gasolina	RWD	2198	106	144	02.94-06.03	■
2.5 V6 (X 25 XE)		Gasolina	RWD	2498	125	170	03.94-09.00	■
2.6 V6 (Y 26 SE)		Gasolina	RWD	2597	132	180	08.00-06.03	■
3.0 V6 (X 30 XE)		Gasolina	RWD	2962	155	211	07.94-07.00	■
3.2 V6 (Y 32 SE)		Gasolina	RWD	3175	160	218	02.01-06.03	■
2.0 Dualfuel (X 20 XEV)		Gasol./Gas (LPG)	RWD	1998	100	136	01.99-07.01	■
2.0 DTI 16V (X 20 DTH)	-05/99	Diesel	RWD	1995	74	101	01.98-09.00	■
2.2 DTI 16V (Y 22 DTH)		Diesel	RWD	2171	88	120	08.00-06.03	■

LISTA DE APLICACIONES - BUYERS GUIDE

2.5 DTi 24V		Diesel	RWD	2497	110	150	09.01-06.03	■
2.5 TD (U 25 DT)	-07/00	Diesel	RWD	2498	96	131	04.94-07.01	■
2.5 TD (U 25 TD)	-07/00	Diesel	RWD	2498	96	131	04.94-07.01	■
2.5 TD (X 25 DT)	-07/00	Diesel	RWD	2498	96	131	04.94-07.01	■
2.5 TD (X 25 TD)	-07/00	Diesel	RWD	2498	96	131	04.94-07.01	■
OMEGA (B) (V94) 12.93-07.03					Saloon (Executive car-E Segment)			
2.2 16V (Y 22 XE)		Gasolina	RWD	2198	106	144	01.94-06.03	■
2.2 16V (Z 22 XE)		Gasolina	RWD	2198	106	144	01.94-06.03	■
2.5 V6 (X 25 XE)		Gasolina	RWD	2498	125	170	03.94-09.00	■
2.6 V6 (Y 26 SE)		Gasolina	RWD	2597	132	180	08.00-07.03	■
3.0 V6 (X 30 XE)		Gasolina	RWD	2962	155	211	04.94-07.00	■
3.2 V6 (Y 32 SE)		Gasolina	RWD	3175	160	218	02.01-07.03	■
2.0 Dualfuel (X 20 XEV)		Gasol./G as (LPG)	RWD	1998	100	136	05.98-07.01	■
2.0 DTi 16V (X 20 DTH)	-05/99	Diesel	RWD	1995	74	101	01.98-09.00	■
2.2 DTi 16V (Y 22 DTH)		Diesel	RWD	2171	88	120	08.00-07.03	■
2.5 DTi 24V		Diesel	RWD	2497	110	150	09.01-07.03	■
2.5 TD (U 25 DT)	-07/00	Diesel	RWD	2498	96	131	04.94-07.01	■
2.5 TD (U 25 TD)	-07/00	Diesel	RWD	2498	96	131	04.94-07.01	■
2.5 TD (X 25 DT)	-07/00	Diesel	RWD	2498	96	131	04.94-07.01	■
2.5 TD (X 25 TD)	-07/00	Diesel	RWD	2498	96	131	04.94-07.01	■
SENATOR Mk II (B) (V88) 09.87-09.93					Saloon (Luxury car-F Segment)			
2.5 i (25 E)	09/90-	Gasolina	RWD	2490	103	140	09.87-10.90	■
2.6 i (C 26 NE)		Gasolina	RWD	2594	110	150	09.90-09.93	■
3.0		Gasolina	RWD	2969	115	156	09.87-09.93	■
3.0 (30 NE)		Gasolina	RWD	2969	130	177	01.88-09.90	■
3.0 (C 30 NE)		Gasolina	RWD	2969	130	177	01.88-09.90	■
3.0 i Cat (30 NE)		Gasolina	RWD	2969	130	177	01.88-09.93	■
3.0 i Cat (C 30 NE)		Gasolina	RWD	2969	130	177	01.88-09.93	■
3.0 (30 NE)		Gasolina	RWD	2969	135	183	09.87-08.88	■
3.0 24V (C 30 SE)		Gasolina	RWD	2969	150	204	09.89-09.93	■