

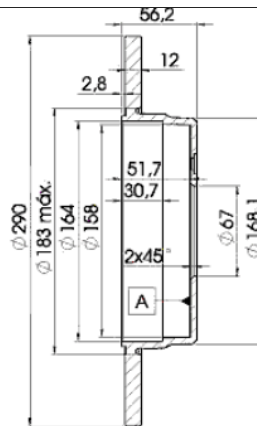
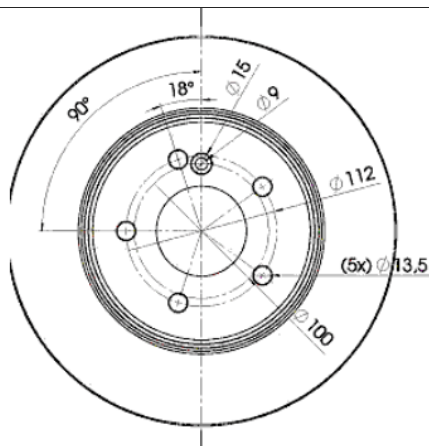
# LISTA DE APLICACIONES - BUYERS GUIDE

## 78BD1213-2



Weight: 10.560

O.E.M.	MAKE
210 423 05 12	MERCEDES-BENZ



## 78BD1213-2

E1 90R-02C0453/0106



Ø290x12x53.5

MAKE
MERCEDES-BENZ



Trac.	CC	Kw	CV
-------	----	----	----



Front / Rear

### MERCEDES-BENZ

E-Class II (VF210) 06.96-03.03						Platform/Chassis (LCVs-N1 Segment)			
E 280 (210.663) (M 112.921)		Gasolina	RWD	2799	150	204	07.99-11.02		■
E 220 CDi (210.606) (OM 611.961)		Diesel	RWD	2148	105	143	07.99-12.02		■
E 250 d (210.610) (OM 605.912)		Diesel	RWD	2497	83	113	06.96-06.98		■
E 270 CDI (210.616) (OM 612.961)		Diesel	RWD	2685	125	170	07.99-12.02		■
E 290 TD (210.617) (OM 602.982)		Diesel	RWD	2874	95	129	07.96-07.99		■
E-Class II (W210) 06.95-08.03						Saloon (Executive car-E Segment)			
E 280 (210.053) (M 104.945)	Long Wheelbase	Gasolina	RWD	2799	142	193	01.96-06.97		■
E 280 (210.063) (M 112.921)	Long Wheelbase	Gasolina	RWD	2799	150	204	12.96-03.02		■
E 220 CDI (210.006) (OM 611.961)	Long Wheelbase	Diesel	RWD	2148	105	143	07.99-03.02		■
E 250 D (210.010) (OM 605.912)	Long Wheelbase	Diesel	RWD	2497	83	113	06.95-07.99		■
E 270 CDI (210.016) (OM 612.961)	Long Wheelbase	Diesel	RWD	2685	125	170	07.99-03.02		■
E 290 Turbo-D (210.017) (OM 602.982)	Long Wheelbase	Diesel	RWD	2874	95	129	03.96-07.99		■
E-Class II T-Model (S210) 06.96-03.03						Estate (Executive car-E Segment)			
E 200 T Kompressor (210.248) (M 111.957)		Gasolina	RWD	1998	120	163	08.00-03.03		■
E 200 T Kompressor (210.248) (M 111.947)		Gasolina	RWD	1998	137	186	06.97-03.03		■
E 230 T (210.237) (M 111.970)		Gasolina	RWD	2295	110	150	06.96-06.97		■
E 240 T (210.261) (M 112.911)		Gasolina	RWD	2398	125	170	06.97-03.03		■
E 240 T (210.262) (M 112.914)		Gasolina	RWD	2597	125	170	08.00-03.03		■
E 280 T (210.263) (M 112.921)		Gasolina	RWD	2799	150	204	12.96-03.03		■
E 280 T 4-matic (210.281) (M 112.921)		Gasolina	4WD	2799	150	204	12.96-03.03		■
E 320 T (210.265) (M 112.941)		Gasolina	RWD	3199	165	224	12.96-03.03		■
E 320 T 4-matic (210.282) (M 112.941)		Gasolina	4WD	3199	165	224	12.96-03.03		■

# LISTA DE APLICACIONES - BUYERS GUIDE

E 420 T (210.272) (M 119.985)	Gasolina	RWD	4196	205	279	06.96-06.97
E 430 T (210.270) (M 113.940)	Gasolina	RWD	4266	205	279	06.97-03.03
E 430 T 4-matic (210.283) (M 113.940)	Gasolina	4WD	4266	205	279	05.99-03.03
E 220 T CDI (210.206) (OM 611.961)	Diesel	RWD	2148	100	136	05.99-03.03
E 220 T CDI (210.206) (OM 611.961)	Diesel	RWD	2148	105	143	07.99-03.03
E 220 T CDI (210.206) (OM 611.961)	Diesel	RWD	2151	92	125	06.98-07.99
E 250 T D (210.210) (OM 605.912)	Diesel	RWD	2497	83	113	06.96-07.99
E 250 T Turbo-D (210.215) (OM 605.962)	Diesel	RWD	2497	110	150	06.97-07.99
E 270 T CDI (OM 612.961)	Diesel	RWD	2685	120	163	02.00-03.03
E 270 T CDI (210.216) (OM 612.961)	Diesel	RWD	2685	125	170	07.99-03.03
E 300 T Turbo-D (210.225) (OM 606.962)	Diesel	RWD	2996	130	177	12.96-07.99
E 320 T CDI (210.226) (OM 613.961)	Diesel	RWD	3222	145	197	07.99-03.03

