

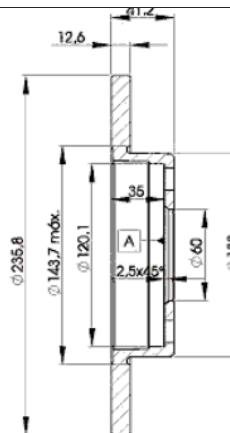
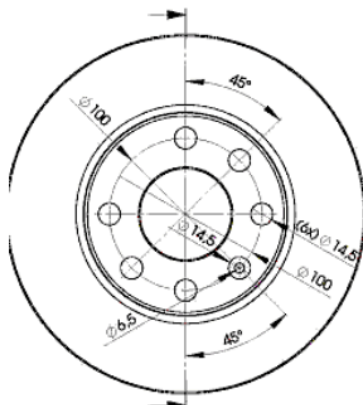
# LISTA DE APLICACIONES - BUYERS GUIDE

## 78BD1240-2



Weight: 7.580

O.E.M.	MAKE
5 69 030	OPEL
90 008 005	VAUXHALL
90 111 242	VAUXHALL
9011 1242	PONTIAC



## 78BD1240-2

E1 90R-02C0415/0044



Ø236x12.5x41

MAKE
BEDFORD
CHEVROLET
OPEL
VAUXHALL



Trac.	CC	Kw	CV	
				Front / Rear

### BEDFORD

#### ASTRA VAN II 09.84-08.91

#### Estate Van (Compact car-C Segment)

1.6 (16 SV)	Gasolina	FWD	1598	66	90	09.84-08.91	■
1.6 D (16 D)	Diesel	FWD	1598	40	54	09.85-08.88	■
1.6 D (16 DA)	Diesel	FWD	1598	42	57	09.87-08.89	■
1.7 D (17 D)	Diesel	FWD	1699	42	57	09.88-08.91	■

#### ASTRAMAX 09.85-06.90

#### Box Body/MPV (Compact car-C Segment)

1.3 (13 S)	Gasolina	FWD	1297	55	75	12.86-06.90	■
1.4 (14 NV)	Gasolina	FWD	1389	44	60	09.89-06.90	■
1.4 (14 NV)	Gasolina	FWD	1389	56	76	09.89-06.90	■

### CHEVROLET

#### CORSA 03.94-12.10

#### Hatchback (Supermini car-B Segment)

1.0 16V (08, 68, 73, 78) (L45(61CUL4))	Gasolina	FWD	995	50	68	08.97-07.02	■
1.0 16V (08, 68, 73, 78) (X 10 YE)	Gasolina	FWD	995	50	68	08.97-07.02	■
1.0 (08, 68, 73, 78) (B 10 NZ)	Gasolina	FWD	999	37	50	03.94-07.00	■
1.0 (08, 68, 73, 78) (LA2(61CUL4))	Gasolina	FWD	999	37	50	03.94-07.00	■
1.0 (08, 68) (C 10 NE)	Gasolina	FWD	999	44	60	03.94-07.00	■
1.0 (08, 68) (L11(61CUL4))	Gasolina	FWD	999	44	60	03.94-07.00	■
1.0 (08, 68) (X 10 E)	Gasolina	FWD	999	44	60	03.94-07.00	■
1.4 GLS (08, 68, 73, 78) (2H6(85CUL4))	Gasolina	FWD	1389	44	60	08.94-07.97	■
1.4 GLS (08, 68, 73, 78) (LQ5(85CUL4))	Gasolina	FWD	1389	44	60	08.94-07.97	■
1.6 GS (L91)	Gasolina	FWD	1598	75	102	08.97-07.02	■
1.6 GSI 16V SFI (08) (L91(98CUL4))	Gasolina	FWD	1598	80	109	08.94-07.97	■

# LISTA DE APLICACIONES - BUYERS GUIDE

1.0 Flex		Gasol./Etanol	FWD	996	47	64	08.99-07.02	■
<b>CORSA 08.94-12.10</b>					<b>Pickup (Supermini car-B Segment)</b>			
1.0 (X 10 YE)		Gasolina	FWD	996	50	68	08.97-07.02	■
1.0 (X 10 E)		Gasolina	FWD	999	44	60	08.97-07.00	■
1.0 Ethanol		Gasol./Etanol	FWD	996	47	64	08.99-07.02	■
<b>CORSA 03.94-12.10</b>					<b>Saloon (Supermini car-B Segment)</b>			
1.0 (19, 98) (L45(61CUL4))		Gasolina	FWD	995	50	68	08.97-07.02	■
1.0 (19, 98) (X 10 YE)		Gasolina	FWD	995	50	68	08.97-07.02	■
1.0 (19) (C 10 NE)		Gasolina	FWD	999	44	60	03.94-07.00	■
1.0 (19) (L11(61CUL4))		Gasolina	FWD	999	44	60	03.94-07.00	■
1.0 (19) (X 10 E)		Gasolina	FWD	999	44	60	03.94-07.00	■
<b>OPEL</b>								
<b>ASCONA C (J82) 09.81-08.88</b>					<b>Hatchback (Executive car-E Segment)</b>			
1.3 N (F68, M68) (13 N)		Gasolina	FWD	1297	44	60	09.81-08.86	■
1.3 S (F68, M68) (13 S)		Gasolina	FWD	1297	55	75	09.81-08.88	■
1.6 (F68, M68) (16 N)		Gasolina	FWD	1598	55	75	09.81-08.88	■
1.6 i (F68, M68) (E 16 NZ)		Gasolina	FWD	1598	55	75	09.87-08.88	■
1.6 i Cat (F68, M68) (C 16 LZ)		Gasolina	FWD	1598	55	75	09.86-08.88	■
1.6 i Cat (F68, M68) (C 16 NZ)		Gasolina	FWD	1598	55	75	09.86-08.88	■
1.6 (F68, M68) (16 SV)		Gasolina	FWD	1598	60	82	09.86-08.88	■
1.6 S (F68, M68) (16 SH)		Gasolina	FWD	1598	66	90	09.81-08.86	■
1.8 (F68, M68) (E 18 NV)		Gasolina	FWD	1796	62	84	09.87-08.88	■
1.8 E (F68, M68) (C 18 NE)		Gasolina	FWD	1796	74	100	01.85-08.86	■
1.8 E (F68, M68) (S 18 NV)		Gasolina	FWD	1796	74	100	01.85-08.86	■
1.8 i (F68, M68) (18 E)		Gasolina	FWD	1796	85	115	09.82-08.86	■
1.6 D (F68, M68) (16 D)		Diesel	FWD	1598	40	54	03.82-08.88	■
1.6 D (F68, M68) (16 DA)		Diesel	FWD	1598	40	54	03.82-08.88	■
<b>ASCONA C (J82) 09.81-10.88</b>					<b>Saloon (Executive car-E Segment)</b>			
1.3 N (F11, M11, F69) (13 N)		Gasolina	FWD	1297	44	60	09.81-08.86	■
1.3 S (F11, M11, F68, M68) (13 S)		Gasolina	FWD	1297	55	75	09.81-08.88	■
1.6 (F11, M11, F68, M68) (16 N)		Gasolina	FWD	1598	55	75	09.81-09.87	■
1.6 i (F11, M11, F68, M68) (E 16 LZ)		Gasolina	FWD	1598	55	75	09.87-08.88	■
1.6 i (F11, M11, F68, M68) (E 16 NZ)		Gasolina	FWD	1598	55	75	09.87-08.88	■
1.6 i Cat (F11, M11, F68, M68) (C 16 LZ)		Gasolina	FWD	1598	55	75	09.86-08.88	■
1.6 i Cat (F11, M11, F68, M68) (C 16 NZ)		Gasolina	FWD	1598	55	75	09.86-08.88	■
1.6 (F11, F68, M11, M68) (16 SV)		Gasolina	FWD	1598	60	82	09.86-08.88	■
1.6 S (F11, M11, F68, M68) (16 SH)		Gasolina	FWD	1598	66	90	09.81-08.86	■
1.8 (F11, M11, F68, M68) (E 18 NV)		Gasolina	FWD	1796	62	84	09.87-08.88	■
1.8 E (F11, M11, F68, M68) (C 18 NE)		Gasolina	FWD	1796	74	100	01.85-08.86	■
1.8 E (F11, M11, F68, M68) (S 18 NV)		Gasolina	FWD	1796	74	100	01.85-08.86	■
1.8 i (F11, M11, F68, M68) (18 E)		Gasolina	FWD	1796	85	115	09.82-08.86	■
1.6 D (F11, M11, F68, M68) (16 D)		Diesel	FWD	1598	40	54	03.82-08.88	■
1.6 D (F11, M11, F68, M68) (16 DA)		Diesel	FWD	1598	40	54	03.82-08.88	■
<b>ASTRA F (T92) 03.93-03.01</b>					<b>Convertible (Compact car-C Segment)</b>			
1.4 Si (C 14 SE)		Gasolina	FWD	1389	60	82	05.93-03.01	■
1.4 i 16V (X 14 XE)		Gasolina	FWD	1389	66	90	01.96-03.01	■
<b>ASTRA F (T92) 10.91-01.99</b>					<b>Estate Van (Compact car-C Segment)</b>			
1.4 i (F70) (C 14 NZ)		Gasolina	FWD	1389	44	60	10.91-01.99	■

# LISTA DE APLICACIONES - BUYERS GUIDE

1.6 i (F70) (X 16 SZ)	-06/93	Gasolina	FWD	1598	52	71	02.93-07.96	■
1.6 i (F70) (C 16 NZ)		Gasolina	FWD	1598	55	75	10.91-02.98	■
1.6 i (F70) (X 16 SZR)		Gasolina	FWD	1598	55	75	10.91-02.98	■
<b>ASTRA F (T92) 09.91-01.01</b>					<b>Estate (Compact car-C Segment)</b>			
1.4 i (F35, M35) (C 14 NZ)		Gasolina	FWD	1389	44	60	09.91-01.98	■
1.4 i (F35, M35) (X 14 NZ)		Gasolina	FWD	1389	44	60	09.91-01.98	■
<b>ASTRA F (T92) 09.91-10.00</b>					<b>Hatchback (Compact car-C Segment)</b>			
1.4 i (F08, M08, F68, M68) (C 14 NZ)		Gasolina	FWD	1389	44	60	09.91-01.98	■
1.4 i (F08, M08, F68, M68) (X 14 NZ)		Gasolina	FWD	1389	44	60	09.91-01.98	■
1.4 (F08, M08, F68, M68) (14 NV)		Gasolina	FWD	1389	55	75	09.91-09.93	■
1.4 (F08, M08, F68, M68) (14 SE)		Gasolina	FWD	1389	60	82	09.92-01.98	■
1.4 Si (F08, M08, F68, M68) (C 14 SE)		Gasolina	FWD	1389	60	82	03.92-01.98	■
1.4 i 16V (F08, M08, F68, M68) (X 14 XE)		Gasolina	FWD	1389	66	90	09.96-02.98	■
1.6 i (F08, M08, F68, M68) (X 16 SZ)		Gasolina	FWD	1598	52	71	05.93-07.96	■
1.6 (F08, M08, F68, M68) (16 LZ2)		Gasolina	FWD	1598	55	75	09.95-01.98	■
1.6 (F08, M08, F68, M68) (16 NZR)		Gasolina	FWD	1598	55	75	09.95-01.98	■
1.6 i (F08, M08, F68, M68) (C 16 NZ)		Gasolina	FWD	1598	55	75	09.91-01.98	■
1.6 i (F08, M08, F68, M68) (X 16 SZR)		Gasolina	FWD	1598	55	75	09.91-01.98	■
<b>ASTRA F (T92) 09.91-01.01</b>					<b>Saloon (Compact car-C Segment)</b>			
1.4 i (F19, M19) (C 14 NZ)		Gasolina	FWD	1389	44	60	09.91-09.98	■
1.4 i (F19, M19) (X 14 NZ)		Gasolina	FWD	1389	44	60	09.91-09.98	■
1.4 (F19, M19) (14 NV)		Gasolina	FWD	1389	55	75	09.91-09.93	■
1.4 (F19, M19) (14 SE)		Gasolina	FWD	1389	60	82	09.92-09.98	■
1.4 Si (F19, M19) (C 14 SE)		Gasolina	FWD	1389	60	82	03.92-09.98	■
1.4 i 16V (F19, M19) (X 14 XE)		Gasolina	FWD	1389	66	90	02.96-09.98	■
1.6 i (F19, M19) (X 16 SZ)		Gasolina	FWD	1598	52	71	05.93-07.96	■
1.6 (F19, M19) (16 LZ2)		Gasolina	FWD	1598	55	75	09.95-09.98	■
1.6 (F19, M19) (16 NZR)		Gasolina	FWD	1598	55	75	09.95-09.98	■
1.6 i (F19, M19) (C 16 NZ)		Gasolina	FWD	1598	55	75	03.92-09.98	■
1.6 i (F19, M19) (X 16 SZR)		Gasolina	FWD	1598	55	75	03.92-09.98	■
<b>ASTRA F CLASSIC (T92) 01.98-01.05</b>					<b>Estate (Compact car-C Segment)</b>			
1.4 i (F35, M35) (X 14 NZ)	-08/02	Gasolina	FWD	1389	44	60	01.98-01.05	■
<b>ASTRA F CLASSIC (T92) 01.98-08.02</b>					<b>Hatchback (Compact car-C Segment)</b>			
1.2 i		Gasolina	FWD	1199	48	65	03.98-08.00	■
1.4 i (M08, M68, F08, F68) (X 14 NZ)		Gasolina	FWD	1389	44	60	01.98-08.02	■
1.4 i		Gasolina	FWD	1389	66	90	03.98-08.00	■
<b>ASTRA F CLASSIC (T92) 01.98-08.02</b>					<b>Saloon (Compact car-C Segment)</b>			
1.4 i (F19, M19) (X 14 NZ)		Gasolina	FWD	1389	44	60	01.98-08.02	■
<b>CORSA A (S83) 02.86-09.94</b>					<b>Hatchback Van (LCVs-N1 Segment)</b>			
1.2 (F08, W5L) (C 12 NZ)		Gasolina	FWD	1195	33	45	08.90-07.94	■
1.2 (F08, W5L) (12 NV)		Gasolina	FWD	1196	37	50	08.90-07.94	■
1.5 D (F08, W5L) (15 D (4EC1))		Diesel	FWD	1488	37	50	06.87-04.89	■
<b>CORSA A (S83) 09.82-03.93</b>					<b>Hatchback (Supermini car-B Segment)</b>			
1.0 (F08, M08, F68, M68) (10 S)	09/91-	Gasolina	FWD	993	33	45	09.82-03.93	■
1.6 GSI (F08, M08, M68, F68) (C 16 NZ)		Gasolina	FWD	1598	55	75	08.88-09.92	■
1.6 GSI (F08, M08, F68, M68) (C 16 NZ)		Gasolina	FWD	1598	60	82	09.88-08.90	■
1.5 D (F08, M08, F68, M68) (15 D (4EC1))		Diesel	FWD	1488	37	50	09.87-03.93	■
1.5 TD (F08, M08, F68, M68) (15 DT (T4EC1))		Diesel	FWD	1488	49	67	03.88-03.93	■

# LISTA DE APLICACIONES - BUYERS GUIDE

CORSA A (S83) 09.82-03.93					Saloon (Supermini car-B Segment)			
1.0 (F11, M11, F19, M19) (10 S)	09/91-	Gasolina	FWD	993	33	45	09.82-09.92	■
1.2 i (F11, M11, F19, M19) (C 12 NZ)	09/91-	Gasolina	FWD	1195	33	45	09.89-03.93	■
1.2 S (F11, M11, M19, F19) (12 ST)	08/91-	Gasolina	FWD	1196	40	55	09.82-03.93	■
1.5 D (F11, M11, F19, M19) (15 D (4EC1))		Diesel	FWD	1488	37	50	10.87-11.92	■
1.5 TD (F11, M11, F19, M19) (15 DT (T4EC1))		Diesel	FWD	1488	49	67	10.87-03.93	■
CORSA B (S93) 08.94-12.01					Hatchback Van (LCVs-N1 Segment)			
1.2 (F08, W5L) (C 12 NZ)		Gasolina	FWD	1195	33	45	08.94-12.01	■
1.4 i (F08, W5L) (C 14 NZ)		Gasolina	FWD	1389	44	60	08.99-09.00	■
1.4 i (F08, W5L) (X 14 SZ)		Gasolina	FWD	1389	44	60	08.99-09.00	■
1.5 D (F08, W5L) (15 D)		Diesel	FWD	1488	37	50	09.94-05.97	■
1.5 D (F08, W5L) (X 15 D)		Diesel	FWD	1488	37	50	09.94-05.97	■
1.7 D (F08, W5L) (17 D (4EE1))		Diesel	FWD	1686	44	60	08.99-09.00	■
1.7 D (F08, W5L) (X 17 D (4EE1))		Diesel	FWD	1686	44	60	08.99-09.00	■
CORSA B / VITA B (S93) 03.93-10.09					Hatchback (Supermini car-B Segment)			
1.0 i 12V (F08, F68, M68) (X 10 XE)		Gasolina	FWD	973	40	54	11.96-09.00	■
1.2 i (F08, F68, M68) (C 12 NZ)		Gasolina	FWD	1195	33	45	03.93-09.00	■
1.2 i (F08, F68, M68) (X 12 SZ)		Gasolina	FWD	1195	33	45	03.93-09.00	■
1.2 i (F08, F68, M68) (12 NZ)		Gasolina	FWD	1195	33	45	03.93-09.00	■
1.2 i 16V (F08, F68, M68) (X 12 XE)		Gasolina	FWD	1199	48	65	03.98-09.00	■
1.4 i (F08, F68, M68) (C 14 NZ)		Gasolina	FWD	1389	40	54	03.93-09.00	■
1.4 i (F08, F68, M68) (X 14 SZ)		Gasolina	FWD	1389	40	54	03.93-09.00	■
1.4 i (F08, F68, M68) (C 14 NZ)		Gasolina	FWD	1389	44	60	03.93-09.00	■
1.4 i (F08, F68, M68) (X 14 SZ)		Gasolina	FWD	1389	44	60	03.93-09.00	■
1.4 (F08, F68, M68) (C 14 SE)		Gasolina	FWD	1389	54	73	04.93-08.94	■
1.5 D (F08, F68, M68) (15 D)		Diesel	FWD	1488	37	50	03.93-09.00	■
1.5 TD (F08, F68, M68) (15 TD)		Diesel	FWD	1488	49	67	03.93-09.00	■
1.5 TD (F08, F68, M68) (X 15 TD)		Diesel	FWD	1488	49	67	03.93-09.00	■
1.7 D (F08, F68, M68) (17 D (4EE1))		Diesel	FWD	1686	44	60	02.96-09.00	■
1.7 D (F08, F68, M68) (X 17 D (4EE1))		Diesel	FWD	1686	44	60	02.96-09.00	■
KADETT D (35_, 36_, 45_, 46_) 08.79-08.84					Estate (Compact car-C Segment)			
1.6		Gasolina	FWD	1598	51	69	09.79-08.84	■
1.6		Gasolina	FWD	1598	55	75	09.79-08.84	■
1.6 S (16 SH)		Gasolina	FWD	1598	66	90	09.81-08.84	■
1.6 D (16 D)		Diesel	FWD	1598	40	54	03.82-08.84	■
KADETT D (31_-34_, 41_-44_) 08.79-08.84					Hatchback (Compact car-C Segment)			
1.6		Gasolina	FWD	1598	51	69	09.79-08.84	■
1.6		Gasolina	FWD	1598	55	75	09.79-08.84	■
1.6 S (16 SH)		Gasolina	FWD	1598	66	90	09.81-08.84	■
1.6 D (16 D)		Diesel	FWD	1598	40	54	03.82-08.84	■
KADETT E (T85) 10.86-02.93					Convertible (Compact car-C Segment)			
1.3 S (13 S)		Gasolina	FWD	1297	55	75	03.87-02.93	■
1.4 i (C 14 NZ)		Gasolina	FWD	1389	44	60	01.90-08.91	■
1.4 S (14 NV)		Gasolina	FWD	1389	55	75	08.90-02.93	■
1.6 i (E 16 NZ)		Gasolina	FWD	1598	55	75	10.86-02.93	■
1.6 i Cat (C 16 LZ)		Gasolina	FWD	1598	55	75	10.87-02.93	■
1.6 i Cat (C 16 NZ)		Gasolina	FWD	1598	55	75	10.87-02.93	■
1.6 i (16 SV)		Gasolina	FWD	1598	60	82	07.89-02.93	■

# LISTA DE APLICACIONES - BUYERS GUIDE

KADETT E (T85) 08.84-09.93					Estate Van (Compact car-C Segment)			
1.2 (C70, D70) (12 SC)		Gasolina	FWD	1196	40	55	09.84-07.86	■
1.3 N (C70, D70) (13 N)	Manual Transmission	Gasolina	FWD	1297	44	60	09.84-07.89	■
1.3 N (C70, D70) (13 NB)	Manual Transmission	Gasolina	FWD	1297	44	60	09.84-07.89	■
1.4 i (C70, D70) (C 14 NZ)	Automatic Transmiss.	Gasolina	FWD	1389	44	60	01.90-08.91	■
1.6 i (C70, D70) (C 16 NZ)		Gasolina	FWD	1598	55	75	08.89-09.93	■
1.8 i (C70, D70) (C 18 NT)	08/88-, -05/92	Gasolina	FWD	1796	66	90	08.84-09.92	■
1.6 D (C70, D70) (16 D)		Diesel	FWD	1598	40	54	08.84-08.88	■
1.6 D (C70, D70) (16 DA)		Diesel	FWD	1598	40	54	08.84-08.88	■
1.7 D (C70, D70) (17 D)	08/89-	Diesel	FWD	1699	42	57	08.88-09.92	■
KADETT E (T85) 01.86-07.94					Estate Van (LCVs-N1 Segment)			
1.3 N (C25, D25) (13 N)		Gasolina	FWD	1297	44	60	01.86-12.89	■
1.3 S (C25, D25) (13 S)		Gasolina	FWD	1297	55	75	01.86-12.89	■
1.4 i (C25, D25) (C 14 NZ)		Gasolina	FWD	1389	44	60	08.91-07.94	■
1.4 S (C25, D25) (14 NV)		Gasolina	FWD	1389	55	75	07.89-08.91	■
1.6 i (C25, D25) (C 16 NZ)	-08/93	Gasolina	FWD	1598	55	75	08.91-07.94	■
1.6 (C25, D25) (16 SV)		Gasolina	FWD	1598	60	82	09.86-12.91	■
1.6 D (C25, D25) (16 D)	-08/89	Diesel	FWD	1598	40	54	01.86-12.89	■
1.6 D (C25, D25) (16 DA)	-08/89	Diesel	FWD	1598	40	54	01.86-12.89	■
1.7 D (C25, D25) (17 D)	08/89-, -08/92	Diesel	FWD	1699	42	57	01.89-07.94	■
1.7 D (C25, D25) (17 DR)	-08/92	Diesel	FWD	1699	44	60	07.92-07.94	■
KADETT E (T85) 09.84-08.91					Estate (Compact car-C Segment)			
1.2 (C15, C35, D15, D35) (12 SC)	Automatic Transmiss.	Gasolina	FWD	1196	40	55	09.84-07.86	■
1.3 i Cat (C15, C35, D15, D35) (C 13 N)	Automatic Transmiss.	Gasolina	FWD	1297	44	60	09.85-08.91	■
1.3 N (C15, C35, D15, D35) (13 N)	Automatic Transmiss.	Gasolina	FWD	1297	44	60	09.84-08.91	■
1.3 (C15, C35, D15, D35) (13 S)		Gasolina	FWD	1297	50	68	01.85-12.87	■
1.3 S (C15, C35, D15, D35) (13 S)	Automatic Transmiss.	Gasolina	FWD	1297	55	75	09.84-08.87	■
1.4 i (C15, C35, D15, D35) (C 14 NZ)	Automatic Transmiss.	Gasolina	FWD	1389	44	60	01.90-08.91	■
1.4 S (C15, C35, D15, D35) (14 NV)	Automatic Transmiss.	Gasolina	FWD	1389	55	75	01.90-08.91	■
1.6 i (C15, C35, D15, D35) (E 16 NZ)		Gasolina	FWD	1598	55	75	09.86-08.91	■
1.6 i Cat (C15, C35, D15, D35) (C 16 LZ)		Gasolina	FWD	1598	55	75	09.86-08.91	■
1.6 i Cat (C15, C35, D15, D35) (C 16 NZ)		Gasolina	FWD	1598	55	75	09.86-08.91	■
1.6 (C15, C35, D15, D35) (16 SV)		Gasolina	FWD	1598	60	82	09.86-08.91	■
1.6 S (C15, C35, D35, D15) (16 SH)		Gasolina	FWD	1598	66	90	09.84-08.86	■
1.8 S (C15, C35, D15, D35) (E 18 NV)		Gasolina	FWD	1796	62	84	09.87-08.91	■
1.8 S (C15, C35, D15, D35) (S 18 NV)		Gasolina	FWD	1796	62	84	09.87-08.91	■
1.8 i (C15, C35, D15, D35) (C 18 NT)		Gasolina	FWD	1796	66	90	06.85-08.91	■
1.8 i (C15, C35, D15, D35) (C 18 NZ)		Gasolina	FWD	1796	66	90	06.85-08.91	■
1.8 E (C15, C35, D15, D35) (C 18 NE)		Gasolina	FWD	1796	74	100	10.85-08.86	■
1.8 (46)		Gasolina	FWD	1796	82	111	12.88-08.91	■
1.8 i (C15, C35, D15, D35) (18 E)		Gasolina	FWD	1796	85	115	09.84-08.86	■
1.8 i (C15, C35, D15, D35) (18 SE)		Gasolina	FWD	1796	85	115	09.84-08.86	■
1.5 TD (C15, C35, D15, D35) (15 TD)		Diesel	FWD	1488	53	72	07.88-08.91	■
1.6 D (C15, C35, D15, D35) (16 D)		Diesel	FWD	1598	40	54	09.84-01.89	■
1.6 D (C15, C35, D15, D35) (16 DA)		Diesel	FWD	1598	40	54	09.84-01.89	■
1.7 D (C15, C35, D15, D35) (17 D)		Diesel	FWD	1699	42	57	02.89-08.91	■
KADETT E (T85) 09.84-12.93					Hatchback (Compact car-C Segment)			
1.3 (C08, C48, D08, D48) (13 S)		Gasolina	FWD	1297	50	68	01.85-12.87	■
1.3 S (C08, C48, D08, D48) (13 S)	Eq.V_ GT	Gasolina	FWD	1297	55	75	09.84-08.87	■

# LISTA DE APLICACIONES - BUYERS GUIDE

1.6 i (C08, C48, D08, D48) (E 16 NZ)		Gasolina	FWD	1598	55	75	09.86-08.91	■
1.6 i Cat (C08, C48, D08, D48) (C 16 LZ)		Gasolina	FWD	1598	55	75	09.86-08.91	■
1.6 i Cat (C08, C48, D08, D48) (C 16 NZ)		Gasolina	FWD	1598	55	75	09.86-08.91	■
1.6 S (C08, C48, D08, D48) (16 SV)		Gasolina	FWD	1598	60	82	09.86-08.91	■
1.6 S (C08, D08, C48, D48) (16 SH)		Gasolina	FWD	1598	66	90	09.84-08.86	■
1.8 S (C08, C48, D08, D48) (E 18 NV)		Gasolina	FWD	1796	62	84	09.87-08.91	■
1.8 S (C08, C48, D08, D48) (S 18 NV)		Gasolina	FWD	1796	62	84	09.87-08.91	■
1.8 i (C08, C48, D08, D48) (C 18 NT)		Gasolina	FWD	1796	66	90	06.85-08.91	■
1.8 i (C08, C48, D08, D48) (C 18 NZ)		Gasolina	FWD	1796	66	90	06.85-08.91	■
1.8 E (C08, C48, D08, D48) (C 18 NE)		Gasolina	FWD	1796	74	100	10.85-08.86	■
1.5 TD (C08, C48, D08, D48) (15 TD)		Diesel	FWD	1488	53	72	07.88-08.91	■
1.6 D (C08, C48, D08, D48) (16 D)		Diesel	FWD	1598	40	54	09.84-01.89	■
1.6 D (C08, C48, D08, D48) (16 DA)		Diesel	FWD	1598	40	54	09.84-01.89	■
1.7 D (C08, C48, D08, D48) (17 D)		Diesel	FWD	1699	42	57	02.89-08.91	■
<b>KADETT E / MONZA E (T85) 09.84-12.93</b>					<b>Saloon (Compact car-C Segment)</b>			
1.6 i (C19, D19) (E 16 NZ)		Gasolina	FWD	1598	55	75	09.86-08.91	■
1.6 i Cat (C19, D19) (C 16 LZ)		Gasolina	FWD	1598	55	75	09.86-08.91	■
1.6 i Cat (C19, D19) (C 16 NZ)		Gasolina	FWD	1598	55	75	09.86-08.91	■
1.6 S (C19, D19) (16 SV)		Gasolina	FWD	1598	60	82	09.86-08.91	■
1.6 S (C19, D19) (16 SH)		Gasolina	FWD	1598	66	90	09.84-08.86	■
1.6		Gasolina	FWD	1598	75	102	09.87-08.91	■
1.8 S (C19, D19) (E 18 NV)		Gasolina	FWD	1796	62	84	09.87-08.91	■
1.8 S (C19, D19) (S 18 NV)		Gasolina	FWD	1796	62	84	09.87-08.91	■
1.8 i (C19, D19) (18 SV)		Gasolina	FWD	1796	66	90	08.89-05.92	■
1.8 i (C19, D19) (C 18 NT)		Gasolina	FWD	1796	66	90	08.89-05.92	■
1.8 i (C19, D19) (C 18 NZ)		Gasolina	FWD	1796	66	90	08.89-05.92	■
1.8 i (C19, D19) (C 18 NE)		Gasolina	FWD	1796	74	100	10.85-08.86	■
1.8 (C19, D19) (18 E)		Gasolina	FWD	1796	84	114	09.87-08.90	■
1.8 i (C19, D19) (18 E)		Gasolina	FWD	1796	85	115	09.84-08.86	■
1.8 i (C19, D19) (18 SE)		Gasolina	FWD	1796	85	115	09.84-08.86	■
1.5 TD (C19, D19) (15 TD)		Diesel	FWD	1488	53	72	07.88-08.91	■
1.6 D (C19, D19) (16 D)		Diesel	FWD	1598	40	54	09.84-01.89	■
1.6 D (C19, D19) (16 DA)		Diesel	FWD	1598	40	54	09.84-01.89	■
1.7 D (C19, D19) (17 D)		Diesel	FWD	1699	42	57	02.89-08.91	■
<b>TIGRA A (S93) 07.94-12.00</b>					<b>Coupe (Sports car-S Segment)</b>			
1.4 16V (F07) (X 14 XE)		Gasolina	FWD	1389	66	90	07.94-12.00	■
<b>VECTRA A (J89) 04.88-12.95</b>					<b>Hatchback (Large family car-D Segment)</b>			
1.4 S (F68, M68) (14 NV)	-08/91	Gasolina	FWD	1389	55	75	04.88-06.92	■
1.6 i Cat (F68, M68) (C 16 NZ)	-08/91	Gasolina	FWD	1598	55	75	09.88-11.95	■
1.6 i Cat (F68, M68) (C 16 NZ2)	-08/91	Gasolina	FWD	1598	55	75	09.88-11.95	■
1.6 S (16 SV)	-07/91	Gasolina	FWD	1598	60	82	09.88-05.93	■
1.6 (F68, M68) (E 16 NZ)	-07/91	Gasolina	FWD	1598	65	88	08.88-06.94	■
1.8 S (F68, M68) (E 18 NVR)		Gasolina	FWD	1796	65	88	09.88-07.89	■
1.8 i (F68, M68) (18 SV)	vehicles without ABS	Gasolina	FWD	1796	66	90	09.88-10.90	■
1.8 i Cat (F68, M68) (C 18 NZ)	-07/91	Gasolina	FWD	1796	66	90	03.90-11.95	■
1.7 D (F68, M68) (17 D)	-07/91	Diesel	FWD	1699	42	57	09.88-09.92	■
<b>VECTRA A (J89) 08.88-12.95</b>					<b>Saloon (Large family car-D Segment)</b>			
1.4 S (F19, M19) (14 NV)	-07/91	Gasolina	FWD	1389	55	75	09.88-06.92	■
1.6 i (F19, M19) (C 16 NZ)		Gasolina	FWD	1598	55	75	09.88-11.95	■

# LISTA DE APLICACIONES - BUYERS GUIDE

1.6 i (F19, M19) (C 16 NZ2)		Gasolina	FWD	1598	55	75	09.88-11.95	■
1.6 i (F19, M19) (E 16 NZ)		Gasolina	FWD	1598	55	75	09.88-11.95	■
1.6 (F19, M19) (16 SV)	-07/91	Gasolina	FWD	1598	60	82	09.88-05.93	■
1.8 S (F19, M19) (E 18 NVR)		Gasolina	FWD	1796	65	88	09.88-07.89	■
1.8 i Cat (F19, M19) (C 18 NZ)	-07/91	Gasolina	FWD	1796	66	90	03.90-11.95	■
1.8 S (F19, M19) (18 SV)	vehicles without ABS	Gasolina	FWD	1796	66	90	09.89-10.90	■
1.7 D (F19, M19) (17 D)	-07/91	Diesel	FWD	1699	42	57	10.88-09.92	■
VAUXHALL								
<b>ASTRA Mk I 09.79-08.86</b>				<b>Estate (Compact car-C Segment)</b>				
1.6 S (16 SH)		Gasolina	FWD	1598	66	90	09.81-08.86	■
<b>ASTRA Mk I 09.79-08.86</b>				<b>Hatchback (Compact car-C Segment)</b>				
1.6 S (16 S)		Gasolina	FWD	1598	66	90	09.81-08.86	■
1.8 GTE (18 E)		Gasolina	FWD	1796	85	115	03.83-08.86	■
<b>ASTRA Mk II (T85) 01.87-09.93</b>				<b>Convertible (Compact car-C Segment)</b>				
1.4 S (43) (14 NV)		Gasolina	FWD	1389	55	75	09.91-09.93	■
1.6 i		Gasolina	FWD	1598	55	75	01.91-08.93	■
1.6 i Cat		Gasolina	FWD	1598	55	75	10.87-02.93	■
1.6 i (16 SV)		Gasolina	FWD	1598	60	82	01.87-12.91	■
<b>ASTRA Mk II (T85) 09.84-08.91</b>				<b>Estate (Compact car-C Segment)</b>				
1.6 (16 SV)		Gasolina	FWD	1598	60	82	09.84-08.91	■
1.6 S (16 S)		Gasolina	FWD	1598	66	90	09.84-08.86	■
1.6 D (16 DA)		Diesel	FWD	1598	40	54	09.84-12.89	■
1.7 D (17 D)		Diesel	FWD	1699	42	57	02.89-08.91	■
<b>ASTRA Mk II BELMONT (T85) 09.85-12.91</b>				<b>Saloon (Compact car-C Segment)</b>				
1.6 S (16 SV)		Gasolina	FWD	1598	60	82	01.89-12.91	■
1.6		Gasolina	FWD	1598	66	90	09.85-08.91	■
1.8 i (C 18 NE)		Gasolina	FWD	1796	74	100	10.85-08.86	■
1.5 DT		Diesel	FWD	1499	49	67	01.88-08.90	■
1.5 DT		Diesel	FWD	1499	53	72	01.87-08.89	■
1.6 D (16 D)		Diesel	FWD	1598	40	54	09.85-08.91	■
1.6 D (16 DA)		Diesel	FWD	1598	40	54	09.85-08.91	■
1.7 D (17 D)		Diesel	FWD	1699	42	57	01.89-12.91	■
<b>ASTRA Mk II CC (T85) 09.84-08.91</b>				<b>Hatchback (Compact car-C Segment)</b>				
1.6 (16 SV)		Gasolina	FWD	1598	60	82	09.84-08.91	■
1.6 S (16 SH)		Gasolina	FWD	1598	66	90	09.84-08.86	■
1.6 D (16 D)		Diesel	FWD	1598	40	54	09.84-12.89	■
1.6 D (16 DA)		Diesel	FWD	1598	40	54	09.84-12.89	■
1.7 D (17 DR)		Diesel	FWD	1699	42	57	09.88-08.91	■
<b>ASTRA Mk III (F) (T92) 09.91-03.01</b>				<b>Convertible (Compact car-C Segment)</b>				
1.4 i		Gasolina	FWD	1389	60	82	05.93-03.01	■
1.6 i (X 16 SZ)		Gasolina	FWD	1598	52	71	03.93-08.96	■
1.6 i (X 16 SZR)		Gasolina	FWD	1598	55	75	01.96-03.01	■
1.6		Gasolina	FWD	1598	74	100	03.94-08.95	■
<b>ASTRA Mk III (F) (T92) 03.91-12.98</b>				<b>Estate (Compact car-C Segment)</b>				
1.4 i (C 14 NZ)	09/94-, -08/96	Gasolina	FWD	1389	44	60	09.91-02.98	■
1.4 i (X 14 NZ)	09/94-, -08/96	Gasolina	FWD	1389	44	60	09.91-02.98	■
1.4 S		Gasolina	FWD	1389	55	75	09.91-02.98	■

# LISTA DE APLICACIONES - BUYERS GUIDE

1.4 i (C 14 SE)		Gasolina	FWD	1389	60	82	03.91-02.98	■
1.6 i (X 16 SZ)		Gasolina	FWD	1598	52	71	07.94-02.98	■
1.6 i (C 16 NZ)		Gasolina	FWD	1598	55	75	09.91-12.98	■
1.6 i (E 16 NZ)		Gasolina	FWD	1598	55	75	09.91-12.98	■
1.6 i (X 16 SZR)		Gasolina	FWD	1598	55	75	09.91-12.98	■
1.6 Si (C 16 SE)		Gasolina	FWD	1598	74	100	03.91-12.94	■
<b>ASTRA Mk III (F) (T92) 09.91-02.98</b>					<b>Hatchback (Compact car-C Segment)</b>			
1.4 i (C 14 NZ)		Gasolina	FWD	1389	44	60	09.91-02.98	■
1.4 i (X 14 NZ)		Gasolina	FWD	1389	44	60	09.91-02.98	■
1.4 S (14 NV)		Gasolina	FWD	1389	55	75	09.91-02.98	■
1.4 i (C 14 SE)		Gasolina	FWD	1389	60	82	03.92-02.98	■
1.6 i (X 16 SZ)		Gasolina	FWD	1598	52	71	02.93-12.96	■
1.6 i (16 NZR)		Gasolina	FWD	1598	55	75	09.91-02.98	■
1.6 i (C 16 NZ)		Gasolina	FWD	1598	55	75	09.91-02.98	■
1.6 i (E 16 NZ)		Gasolina	FWD	1598	55	75	09.91-02.98	■
1.6 i (X 16 SZR)		Gasolina	FWD	1598	55	75	09.91-02.98	■
1.6 i (C 16 SE)		Gasolina	FWD	1598	74	100	03.92-02.98	■
<b>ASTRA Mk III (F) (T92) 09.91-09.98</b>					<b>Saloon (Compact car-C Segment)</b>			
1.4 i (C 14 NZ)	09/95-, -02/98	Gasolina	FWD	1389	44	60	04.92-09.98	■
1.4 i (C 14 SE)		Gasolina	FWD	1389	60	82	04.92-09.98	■
1.6 i (X 16 SZ)		Gasolina	FWD	1598	52	71	08.94-07.96	■
1.6 i (C 16 NZ)		Gasolina	FWD	1598	55	75	03.92-09.98	■
1.6 i (X 16 SZR)		Gasolina	FWD	1598	55	75	03.92-09.98	■
1.6 i (C 16 SE)		Gasolina	FWD	1598	74	100	05.92-12.94	■
<b>ASTRAMAX (T85) 08.85-10.94</b>					<b>Box Body/MPV (LCVs-N1 Segment)</b>			
1.3 S (13 S)		Gasolina	FWD	1297	55	75	08.85-12.89	■
1.4 i (C 14 NZ)		Gasolina	FWD	1389	44	60	08.91-07.94	■
1.6 i (C 16 NZ)		Gasolina	FWD	1598	55	75	08.91-10.94	■
1.6 (16 SV)		Gasolina	FWD	1598	60	82	09.85-12.91	■
1.6 (C 16 NZ)		Gasolina	FWD	1598	61	83	12.86-12.92	■
1.6 (E 16 NZ)		Gasolina	FWD	1598	61	83	12.86-12.92	■
<b>ASTRAVAN Mk III (F) (T92) 01.91-08.98</b>					<b>Estate Van (Compact car-C Segment)</b>			
1.4 i (F70) (C 14 NZ)	09/94-	Gasolina	FWD	1389	44	60	09.91-08.95	■
<b>CAVALIER Mk II (J82) 09.81-08.88</b>					<b>Estate (Large family car-D Segment)</b>			
1.3 S (13 S)		Gasolina	FWD	1297	55	75	09.81-08.88	■
1.6 (16 SH)		Gasolina	FWD	1598	66	90	10.83-08.88	■
1.6 D (16 DA)		Diesel	FWD	1598	40	54	03.82-08.88	■
<b>CAVALIER Mk II (J82) 09.81-08.88</b>					<b>Saloon (Large family car-D Segment)</b>			
1.3 N		Gasolina	FWD	1297	44	60	09.81-08.88	■
1.3 S (13 S)		Gasolina	FWD	1297	55	75	09.81-08.88	■
1.6		Gasolina	FWD	1598	51	69	08.81-07.86	■
1.6 i (E 16 NZ)		Gasolina	FWD	1598	55	75	08.86-08.88	■
1.6 i Cat (C 16 LZ)		Gasolina	FWD	1598	55	75	08.86-08.88	■
1.6 i Cat (C 16 NZ)		Gasolina	FWD	1598	55	75	08.86-08.88	■
1.6 N (16 N)		Gasolina	FWD	1598	55	75	09.81-08.88	■
1.6 S (16 SH)		Gasolina	FWD	1598	66	90	09.81-08.88	■
1.6 D (16 D)		Diesel	FWD	1598	40	54	03.82-08.88	■



# LISTA DE APLICACIONES - BUYERS GUIDE

CAVALIER Mk II CC (J82) 09.81-08.88					Hatchback (Large family car-D Segment)			
1.3		Gasolina	FWD	1297	44	59	09.81-08.88	■
1.3 S (13 S)		Gasolina	FWD	1297	55	75	09.81-08.88	■
1.6 S (16 SH)		Gasolina	FWD	1598	66	90	09.81-08.88	■
1600D (16 D)		Diesel	FWD	1598	40	54	03.82-08.88	■
1600D (16 DA)		Diesel	FWD	1598	40	54	03.82-08.88	■
CAVALIER Mk III (J89) 08.88-11.95					Saloon (Large family car-D Segment)			
1.4 S (14 NV)		Gasolina	FWD	1389	55	75	09.88-11.95	■
1.6 i (X 16 SZ)		Gasolina	FWD	1598	52	71	09.93-11.95	■
1.6 i (C 16 NZ)		Gasolina	FWD	1598	55	75	09.88-11.95	■
1.6 i (E 16 NZ)		Gasolina	FWD	1598	55	75	09.88-11.95	■
1.6 (16 SV)		Gasolina	FWD	1598	60	82	09.88-05.93	■
1.8 (E 18 NVR)		Gasolina	FWD	1796	65	88	09.89-08.92	■
1.8 (18 SV)	09/89-, -07/91	Gasolina	FWD	1796	66	90	09.88-08.95	■
1.8 (C 18 NZ)	09/89-, -07/91	Gasolina	FWD	1796	66	90	09.88-08.95	■
1.8 i Cat (18 SV)		Gasolina	FWD	1796	66	90	03.90-11.95	■
1.8 i Cat (C 18 NZ)		Gasolina	FWD	1796	66	90	03.90-11.95	■
1.7 TD (17 TD)		Diesel	FWD	1686	60	82	09.88-11.95	■
1.7 D (17 D)		Diesel	FWD	1699	42	57	09.88-09.92	■
1.7 D (17 DR)		Diesel	FWD	1699	44	60	07.92-11.95	■
CAVALIER Mk III CC (J89) 09.88-11.95					Hatchback (Large family car-D Segment)			
1.4 S (14 NV)		Gasolina	FWD	1389	55	75	09.88-11.95	■
1.6 i (X 16 SZ)		Gasolina	FWD	1598	52	71	09.93-11.95	■
1.6 i (C 16 NZ)		Gasolina	FWD	1598	55	75	09.88-11.95	■
1.6 i (E 16 NZ)		Gasolina	FWD	1598	55	75	09.88-11.95	■
1.6 (16 SV)		Gasolina	FWD	1598	60	82	09.88-05.93	■
1.8 (18 SV)		Gasolina	FWD	1796	66	90	09.88-10.90	■
1.8 (C 18 NZ)		Gasolina	FWD	1796	66	90	09.88-10.90	■
1.8 i Cat (18 SV)		Gasolina	FWD	1796	66	90	03.90-11.95	■
1.8 i Cat (C 18 NZ)		Gasolina	FWD	1796	66	90	03.90-11.95	■
1.7 D (17 D)	-07/91	Diesel	FWD	1699	42	57	09.88-09.92	■
CORSA Mk I (B) (S93) 12.92-09.00					Hatchback (Supermini car-B Segment)			
1.0 i 12V (X 10 XE)		Gasolina	FWD	973	40	54	11.96-09.00	■
1.2 i (C 12 NZ)		Gasolina	FWD	1195	33	45	03.93-09.00	■
1.2 i (X 12 SZ)		Gasolina	FWD	1195	33	45	03.93-09.00	■
1.2 i 16V (X 12 XE)		Gasolina	FWD	1199	48	65	03.98-09.00	■
1.4 i (C 14 NZ)		Gasolina	FWD	1389	44	60	03.93-09.00	■
1.4 i (X 14 SZ)		Gasolina	FWD	1389	44	60	03.93-09.00	■
1.4 i S (C 14 SE)		Gasolina	FWD	1389	60	82	03.93-09.00	■
1.4 i 16V (X 14 XE)		Gasolina	FWD	1389	66	90	09.94-09.00	■
1.6 i 16V (X 16 XE)		Gasolina	FWD	1598	78	106	09.94-09.00	■
1.5 D (15 D)		Diesel	FWD	1488	37	50	12.92-12.96	■
1.5 TD (X 15 TD)		Diesel	FWD	1488	49	67	03.93-10.96	■
1.7 D (X 17 D)		Diesel	FWD	1686	44	60	02.96-09.00	■
CORSAVAN Mk I (B) (S93) 01.94-09.00					Hatchback Van (LCVs-N1 Segment)			
1.4 i (C 14 NZ)		Gasolina	FWD	1389	44	60	01.94-09.00	■
1.4 i (X 14 SZ)		Gasolina	FWD	1389	44	60	01.94-09.00	■
1.5 D (15 D)		Diesel	FWD	1488	37	50	08.94-12.95	■
1.7 D (X 17 D)	03/96-	Diesel	FWD	1686	44	60	01.94-09.00	■

# LISTA DE APLICACIONES - BUYERS GUIDE

NOVA (S83) 09.82-12.93					Saloon (Supermini car-B Segment)			
1.0 (10 S)		Gasolina	FWD	993	33	45	09.82-10.87	■
1.2 (C 12 NZ)		Gasolina	FWD	1195	33	45	02.92-12.93	■
1.5 D		Diesel	FWD	1488	37	50	09.87-02.93	■
1.5 TD (15 DT (T4EC1))		Diesel	FWD	1488	49	67	01.90-02.93	■
NOVA CC (S83) 05.83-03.93					Hatchback (Supermini car-B Segment)			
1.0 (10 S)	09/91-, -08/92	Gasolina	FWD	993	33	45	05.83-03.93	■
1.5 D (15 D)	10/90-	Diesel	FWD	1488	37	50	09.87-03.93	■
1.5 TD (15 DT (T4EC1))		Diesel	FWD	1488	49	67	01.90-03.93	■
NOVAVAN (S83) 01.90-10.94					Hatchback Van (LCVs-N1 Segment)			
1.0 (10 S)		Gasolina	FWD	993	33	45	10.91-12.91	■
1.5 D (15 D)		Diesel	FWD	1488	37	50	01.91-10.94	■