

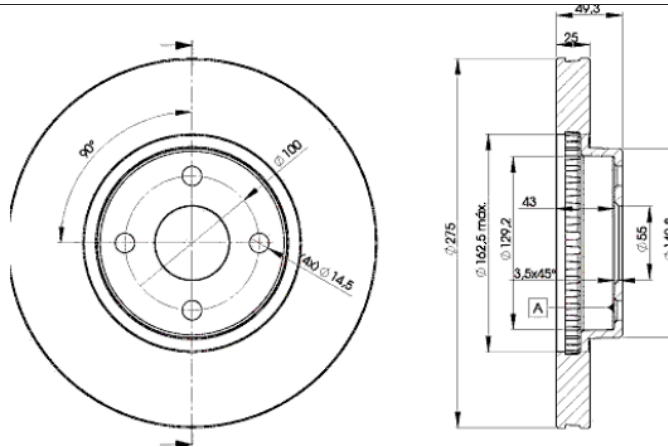
LISTA DE APLICACIONES - BUYERS GUIDE

78BD1320-2



Weight: 14.264

O.E.M.	MAKE
43512-13020	TOYOTA
43512-13021	TOYOTA
43512-13022	TOYOTA



78BD1320-2

E1 90R-02C0433/0090



Ø275.5x25x49.5

MAKE
TOYOTA



Trac.	CC	Kw	CV
-------	----	----	----



Front / Rear

TOYOTA

						Estate (Compact executive car-D Segment)			
COROLLA IX (_E12_) 03.01-12.08									
2.0 D-4D (CDE120_, CDE120R) (1CD-FTV)		Diesel	FWD	1995	66	90	01.02-02.07	■	
COROLLA IX (_E12_) 07.01-05.07						MPV (Compact MPV-M1 Segment)			
2.0 D-4D (CDE120_, CDE120R) (1CD-FTV)		Diesel	FWD	1995	66	90	01.02-05.04	■	
MATRIX / VOLTZ (_E13_) 01.02-12.07						Hatchback (Large MPV-M1 Segment)			
1.8 4WD (ZZE138) (1ZZ-FE)		Gasolina	4WD	1794	91	124	01.02-02.04	■	
1.8 VVTi (ZZE136) (1ZZ-FE)		Gasolina	FWD	1794	96	131	01.02-02.04	■	
1.8 VVTi (ZZE132, ZZE134) (1ZZ-FE)		Gasolina	FWD	1794	97	132	09.02-12.05	■	