

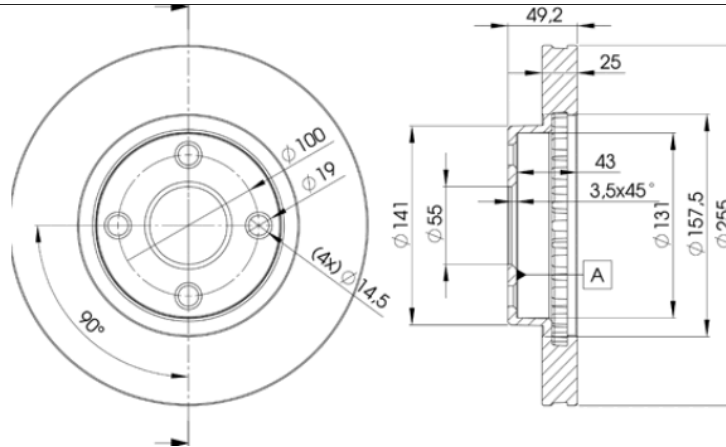
LISTA DE APLICACIONES - BUYERS GUIDE

78BD1330-2



Weight: 10.410

O.E.M.	MAKE
43512-13030	TOYOTA



78BD1330-2



Ø256x25x49.5

MAKE
BYD
ENGLON (GEELY)
GEELY
TOYOTA



Trac.	CC	Kw	CV
-------	----	----	----



Front / Rear

BYD

F3 03.05-							Saloon ()	
1.5		Gasolina	FWD	1488	78	106	09.07-12.12	■
1.5 (4G15S)		Gasolina	FWD	1488	79	107	09.08-12.12	■
1.5 (BYD473QB)		Gasolina	FWD	1488	79	107	09.08-12.12	■
1.5		Gasolina	FWD	1497	80	109	01.11-	■
1.5 Ti (BYD476ZQA)		Gasolina	FWD	1497	113	154	03.14-12.15	■
1.6 (DA4G18)		Gasolina	FWD	1584	74	99	09.05-07.12	■
1.8		Gasolina	FWD	1839	90	122	05.07-12.08	■
F3R 04.07-							Hatchback ()	
1.5 (4G15S)		Gasolina	FWD	1488	78	106	04.07-08.09	■
1.5		Gasolina	FWD	1488	79	107	08.10-	■
1.6 (DA4G18)		Gasolina	FWD	1584	74	99	09.07-	■
G3 10.09-							Saloon ()	
1.5		Gasolina	FWD	1488	78	106	10.09-10.10	■
1.5 (473QB)		Gasolina	FWD	1488	79	107	10.10-12.12	■
1.5		Gasolina	FWD	1497	80	109	09.11-12.16	■
1.8 (BYD483QA)		Gasolina	FWD	1839	90	122	10.09-12.16	■
G3R 04.11-							Hatchback ()	
1.5		Gasolina	FWD	1497	80	109	04.11-12.14	■
1.8		Gasolina	FWD	1839	90	122	04.11-12.14	■
L3 08.10-							Saloon ()	
1.5		Gasolina	FWD	1488	79	107	12.10-12.12	■
1.5		Gasolina	FWD	1497	80	109	10.10-12.16	■

LISTA DE APLICACIONES - BUYERS GUIDE

1.8		Gasolina	FWD	1839	90	122	08.10-12.15	■
ENGLON (GEELY)								
SC7 11.10-					Saloon ()			
1.5 (JLY-4G15)		Gasolina	FWD	1498	80	109	11.10-12.17	■
GEELY								
VISION / FC 12.05-					Saloon ()			
1.5 (JL4G15D)		Gasolina	FWD	1498	78	106	05.09-	■
1.5 (JL4G15D)		Gasolina	FWD	1498	102	139	05.09-12.13	■
1.8 (JL4G18)		Gasolina	FWD	1792	102	139	08.06-12.12	■
TOYOTA								
COROLLA IX (_E12_) 03.01-12.08					Estate (Compact executive car-D Segment)			
1.4 VVT-i (ZZE120_, ZZE120R) (4ZZ-FE)		Gasolina	FWD	1398	71	97	01.02-02.07	■
1.6 VVT-i (ZZE121_, ZZE121R) (3ZZ-FE)		Gasolina	FWD	1598	81	110	01.02-08.07	■
1.8 (ZZE122) (1ZZ-FE)		Gasolina	FWD	1794	100	136	12.01-12.07	■
1.4 D4-D (NDE120_, NDE120R) (1ND-TV)		Diesel	FWD	1364	66	90	06.04-10.07	■
COROLLA IX (_E12_) 07.01-05.07					MPV (Compact MPV-M1 Segment)			
1.4 VVT-i		Gasolina	FWD	1398	71	97	01.02-05.04	■
1.6 VVT-i (ZZE121_, ZZE121R) (3ZZ-FE)		Gasolina	FWD	1598	81	110	08.01-05.04	■
1.8 VVT-i (ZZE122_, ZZE122R) (1ZZ-FE)		Gasolina	FWD	1794	99	135	12.01-05.04	■
COROLLA IX-X (ZER_, ZZE12_, R1_) 03.04-10.09					MPV (Compact MPV-M1 Segment)			
1.3 VVTi (8A-FE)		Gasolina	FWD	1342	64	87	03.04-03.09	■
1.5		Gasolina	FWD	1497	80	109	03.04-03.09	■