

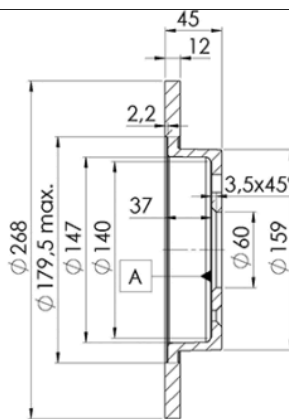
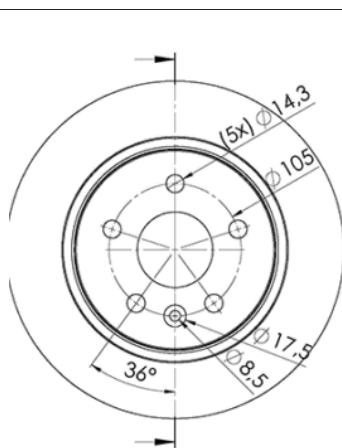
LISTA DE APLICACIONES - BUYERS GUIDE

78BD1560-2



Weight: 9.612

O.E.M.	MAKE
13 502 134	OPEL
13 502 135	VAUXHALL
13 502 136	OPEL
1350 2134	CHEVROLET
1350 2135	CHEVROLET
1350 2136	CHEVROLET
1350214	OPEL
13502864	CHEVROLET
23118283	CHEVROLET
5 69 072	VAUXHALL
5 69 074	VAUXHALL
95527032	VAUXHALL



78BD1560-2

E1 90R-02C0415/0011



Ø268x12x45

MAKE
BUICK
BUICK (SGM)
CHEVROLET
CHEVROLET (SGM)
HOLDEN
NISSAN
OPEL
VAUXHALL



Trac.	CC	Kw	CV
-------	----	----	----



Front / Rear

BUICK

ENCORE GX SUV (4T_) 09.19-

SUV (Mini SUV-J Segment)

1.2 (LIH)	Gasolina	FWD	1199	102	139	09.19-	■
1.2 AWD (L3T)	Gasolina	4WD	1341	116	158	09.19-	■
1.3 (L3T)	Gasolina	FWD	1341	116	158	09.19-	■

ENCORE SUV 09.12-

SUV (Mini SUV-J Segment)

1.4 (LUV)	Gasolina	FWD	1364	103	140	09.12-	■
1.4 AWD (LUV)	Gasolina	4WD	1364	103	140	09.12-	■
1.4 (LE2(85CUL4))	Gasolina	FWD	1399	114	155	09.12-	■
1.4 AWD (LE2(85CUL4))	Gasolina	4WD	1399	114	155	09.12-	■

BUICK (SGM)

ENCORE (SJ2) 07.12-

SUV (Mini SUV-J Segment)

1.4	Gasolina	FWD	1364	103	140	07.12-11.13	■
1.4	Gasolina	FWD	1364	103	140	07.12-11.13	■
1.4 T	Gasolina	FWD	1364	103	140	10.12-	■
1.4 T A las 4 ruedas	Gasolina	FWD	1364	103	140	10.12-	■
1.4 T (LFF)	Gasolina	FWD	1372	105	143	12.16-	■
1.4 T AWD (LFF)	Gasolina	4WD	1372	105	143	12.16-	■

ENCORE II (SM3) 07.19-

Closed Off-Road Vehicle (Mini SUV-J Segment)

15T	Gasolina	FWD	999	92	125	07.19-	■
20 AWD	Gasolina	4WD	1341	121	165	07.19-	■
20t	Gasolina	FWD	1341	121	165	07.19-	■
20t	Gasolina	FWD	1341	121	165	07.19-	■

LISTA DE APLICACIONES - BUYERS GUIDE

EXCELLE GT (CP2) 06.10-					Saloon (Compact car-C Segment)			
1.4 18T (LFF)	Syst. 15"	Gasolina	FWD	1372	106	144	03.15-10.17	■
1.5 15N (L2B)	Syst. 15"	Gasolina	FWD	1485	84	114	03.15-10.17	■
1.6	Syst. 15"	Gasolina	FWD	1598	89	121	06.10-	■
1.8 T	Syst. 15"	Gasolina	FWD	1796	108	147	06.10-	■
EXCELLE XT (CP2) 01.10-12.15					Hatchback (Compact car-C Segment)			
1.6	Syst. 15"	Gasolina	FWD	1598	89	121	01.10-	■
1.8	Syst. 15"	Gasolina	FWD	1796	108	147	01.10-	■
CHEVROLET								
AVEO II / SONIC (T300) 03.11-					Hatchback (Supermini car-B Segment)			
1.4 Turbo (LUJ)		Gasolina	FWD	1364	103	140	08.13-	■
1.8	Syst. 15"	Gasolina	FWD	1796	103	140	07.15-12.18	■
1.8 Flexfuel	Syst. 15"	Gasol./Etanol	FWD	1796	101	137	09.13-07.15	■
1.8 Flexfuel	Syst. 15"	Gasol./Etanol	FWD	1796	103	140	07.15-12.18	■
AVEO II / SONIC (T300) 03.11-					Saloon (Supermini car-B Segment)			
1.8	Syst. 15"	Gasolina	FWD	1796	103	140	07.15-12.18	■
1.8 Flexfuel (LUW,LWE)	Syst. 15"	Gasol./Etanol	FWD	1796	101	137	09.13-07.15	■
1.8 Flexfuel	Syst. 15"	Gasol./Etanol	FWD	1796	103	140	07.15-12.18	■
CRUZE I (J305) 12.10-					Hatchback (Supermini car-B Segment)			
1.4 (A 14 NET)	Syst. 15"	Gasolina	FWD	1364	103	140	06.12-	■
1.4 (LUJ)	Syst. 15"	Gasolina	FWD	1364	103	140	06.12-	■
1.4 (LDD)	Syst. 15"	Gasolina	FWD	1398	74	101	07.13-12.15	■
1.6 (LXT)	Syst. 15"	Gasolina	FWD	1598	80	109	01.12-	■
1.6 (LDE)	Syst. 15"	Gasolina	FWD	1598	86	117	12.12-	■
1.6		Gasolina	FWD	1598	89	121	12.12-	■
1.6 (LDE)	Syst. 15"	Gasolina	FWD	1598	91	124	06.11-	■
1.6 T		Gasolina	FWD	1598	135	184	12.12-	■
1.8 (2H0)	Syst. 15"	Gasolina	FWD	1796	103	140	10.11-	■
1.8 (2H0)	Syst. 15"	Gasolina	FWD	1796	104	141	06.11-	■
1.8 Flex	Syst. 15"	Gasolina	FWD	1796	106	144	10.12-	■
1.8		Gasolina	FWD	1796	108	147	12.12-	■
1.8 LPG (2H0)	Syst. 15"	Gasol./Gas (LPG)	FWD	1796	104	141	06.11-12.15	■
1.7 TD (LKR)	Syst. 15"	Diesel	FWD	1686	81	110	08.13-12.15	■
1.7 D (LUD)	Syst. 15"	Diesel	FWD	1686	96	131	01.12-12.15	■
2.0 CDI	Syst. 15"	Diesel	RWD	1991	110	150	01.12-	■
2.0 VCDi	Syst. 15"	Diesel	RWD	1998	110	150	12.10-	■
2.0 CDI (LNP)	Syst. 15"	Diesel	FWD	1998	120	163	06.11-	■
CRUZE I (J300) 05.09-					Saloon (Supermini car-B Segment)			
1.4 (LUJ)	Syst. 15"	Gasolina	FWD	1364	103	140	09.10-	■
1.4 (LDD)	Syst. 15"	Gasolina	FWD	1398	74	101	07.13-	■
1.4	Syst. 15"	Gasolina	FWD	1398	103	140	10.13-	■
1.6 (LXT)	Syst. 15"	Gasolina	FWD	1598	80	109	05.09-	■
1.6 (LDE)	Syst. 15"	Gasolina	FWD	1598	83	113	05.09-	■
1.6		Gasolina	FWD	1598	86	117	12.12-	■
1.6 (LDE)	Syst. 15"	Gasolina	FWD	1598	86	117	12.12-	■
1.6		Gasolina	FWD	1598	89	121	12.12-	■

LISTA DE APLICACIONES - BUYERS GUIDE

1.6 (LDE)	Syst. 15"	Gasolina	FWD	1598	91	124	05.09-	■
1.6 T		Gasolina	FWD	1598	135	184	12.12-	■
1.8 (LUW,LWE)	Syst. 15"	Gasolina	FWD	1796	101	137	05.09-	■
1.8 (LUW)	Syst. 15"	Gasolina	FWD	1796	103	140	11.09-	■
1.8 (LWE)	Syst. 15"	Gasolina	FWD	1796	103	140	11.09-	■
1.8 (2H0)	Syst. 15"	Gasolina	FWD	1796	104	141	05.09-	■
1.8 Flex	Syst. 15"	Gasolina	FWD	1796	106	144	01.11-	■
1.8		Gasolina	FWD	1796	108	147	12.12-	■
1.8 LPG (2H0)	Syst. 15"	Gasol./Gas (LPG)	FWD	1796	104	141	06.11-	■
1.8 Flex (LUW)	Syst. 15"	Gasol./Etanol	FWD	1796	101	137	09.13-	■
1.8 Flex (LUW)	Syst. 15"	Gasol./Etanol	FWD	1796	103	140	08.15-	■
1.7 TD (LKR)	Syst. 15"	Diesel	FWD	1686	81	110	11.13-	■
1.7 D (LUD)	Syst. 15"	Diesel	FWD	1686	96	131	01.12-	■
2.0 CDI (LUZ)	Syst. 15"	Diesel	FWD	1956	110	150	09.13-	■
2.0 CDI	Syst. 15"	Diesel	RWD	1956	113	154	09.13-12.15	■
2.0 CDI		Diesel	FWD	1991	90	123	05.09-	■
2.0 CDI (LLW)	Syst. 15"	Diesel	FWD	1991	92	125	05.09-05.11	■
2.0 CDI (LLW)	Syst. 15"	Diesel	FWD	1991	110	150	05.09-	■
2.0 CDI (LNP)	Syst. 15"	Diesel	FWD	1998	120	163	08.10-	■
2.0 VCDi (LNP)	Syst. 15"	Diesel	FWD	1998	122	166	03.12-11.18	■
CRUZE I Station Wagon (J308) 08.12-				Estate (Supermini car-B Segment)				
1.4 (LUJ)	Syst. J67, 15"	Gasolina	FWD	1364	103	140	08.12-	■
1.4 (LDD)	Syst. 15"	Gasolina	FWD	1398	74	101	07.13-12.15	■
1.6 (LDE)	Syst. 15"	Gasolina	FWD	1598	86	117	12.12-12.15	■
1.6 (LDE)	Syst. J67, 15"	Gasolina	FWD	1598	91	124	08.12-12.15	■
1.8 (2H0)	Syst. J67, 15"	Gasolina	FWD	1796	104	141	08.12-	■
1.7 TD (LKR)	Syst. 15"	Diesel	FWD	1686	81	110	11.13-12.15	■
1.7 TD (LUD)	Syst. J67, 15"	Diesel	FWD	1686	96	131	08.12-	■
2.0 TD (LNP)	Syst. J67, 15"	Diesel	FWD	1998	120	163	08.12-	■
CRUZE II (J405) 01.17-				Hatchback (Supermini car-B Segment)				
1.4 Flex (LE2(85CUL4))	Syst. 15"	Gasol./Etanol	FWD	1399	113	153	01.17-12.23	■
TRAX / TRACKER 12.12-				SUV (Mini SUV-J Segment)				
1.4 (LUJ)		Gasolina	FWD	1364	103	140	12.12-	■
1.4 AWD (LUJ)		Gasolina	4WD	1364	103	140	12.12-	■
1.6 (LDE)		Gasolina	FWD	1598	85	116	12.12-	■
1.6		Gasolina	FWD	1598	85	116	12.12-	■
1.8 (2H0)		Gasolina	FWD	1796	103	140	03.13-	■
1.8 AWD (2H0)		Gasolina	4WD	1796	103	140	03.13-	■
1.4 LPG (LUJ)		Gasol./Gas (LPG)	FWD	1364	103	140	04.13-	■
1.4 Flex (LE2(85CUL4))		Gasol./Etanol	FWD	1399	113	153	01.17-	■
1.8 Flex (LFH)		Gasol./Etanol	FWD	1796	106	144	10.13-02.17	■
D AWD		Diesel	4WD	1598	99	135	01.16-	■
1.6 D (LVL)		Diesel	FWD	1598	100	136	11.14-12.15	■
1.6 D AWD (LVL)		Diesel	4WD	1598	100	136	11.14-12.15	■
1.7 TD (LUD)		Diesel	FWD	1686	96	131	12.12-	■
1.7 TD AWD (LUD)		Diesel	4WD	1686	96	131	12.12-	■

CHEVROLET (SGM)

LISTA DE APLICACIONES - BUYERS GUIDE

CRUZE (CP1) 09.13-					Hatchback (Supermini car-B Segment)			
1.6 (LDE)	Syst. 15"	Gasolina	FWD	1598	89	121	09.13-02.17	■
CRUZE (CP1) 04.09-07.16					Saloon (Supermini car-B Segment)			
1.6	Syst. 15"	Gasolina	FWD	1598	86	117	04.09-	■
1.6 (LDE)	Syst. 15"	Gasolina	FWD	1598	86	117	04.09-12.13	■
1.8	Syst. 15"	Gasolina	FWD	1796	105	143	04.09-	■
1.8 (2H0)	Syst. 15"	Gasolina	FWD	1796	105	143	04.09-12.11	■
CRUZE II (CP3) 08.14-07.16					Saloon (Supermini car-B Segment)			
1.5		Gasolina	FWD	1485	80	109	03.14-	■
TRAX (SJ3) 04.14-					SUV (Mini SUV-J Segment)			
1.4 T (LFF)		Gasolina	FWD	1372	103	140	04.14-	■
1.4 T AWD (LFF)		Gasolina	4WD	1372	103	140	04.14-	■
1.4 T		Gasolina	FWD	1372	105	143	11.16-	■
1.4 T AWD		Gasolina	FWD	1372	105	143	11.16-	■
HOLDEN								
ASTRA (PJ) 12.14-					Hatchback (Compact car-C Segment)			
1.6 GTC Sport	Syst. 15"	Gasolina	FWD	1598	125	170	12.14-	■
1.6 GTC Sport	Syst. 15"	Gasolina	FWD	1598	147	200	12.14-	■
ASTRA (BL) 06.17-					Saloon (Compact car-C Segment)			
1.4 (B 14 XFT)	Syst. 15"	Gasolina	FWD	1399	110	150	06.17-	■
BARINA (TM) 11.11-					Hatchback (Supermini car-B Segment)			
1.4 Turbo		Gasolina	FWD	1364	103	140	07.13-	■
CRUZE II (JH) 06.12-					Estate (Supermini car-B Segment)			
1.8 i	Syst. J67, Rim 15	Gasolina	FWD	1796	104	141	06.12-	■
2.0 DTFi	Syst. J67, Syst. 15"	Diesel	RWD	1991	120	163	06.12-	■
CRUZE II (JH) 11.11-					Hatchback (Supermini car-B Segment)			
1.4 i Turbo	Rim 15	Gasolina	FWD	1364	103	140	11.11-	■
1.6 i	Syst. 15"	Gasolina	FWD	1598	132	180	04.13-	■
1.8 i	Rim 15	Gasolina	FWD	1796	104	141	11.11-	■
2.0 DTFi	Rim 15	Diesel	RWD	1991	120	163	11.11-	■
CRUZE II (JG) 06.09-03.11					Saloon (Supermini car-B Segment)			
1.4 i Turbo	Syst. 15"	Gasolina	FWD	1364	103	140	03.11-	■
1.6 i	Syst. 15"	Gasolina	FWD	1598	132	180	04.13-	■
1.8 i	Syst. 15"	Gasolina	FWD	1796	104	141	06.09-03.11	■
1.8 i (F18D)	Syst. 15"	Gasolina	FWD	1796	104	141	04.11-12.16	■
2.0 DTFi	Syst. 15"	Diesel	RWD	1991	110	150	06.09-03.11	■
2.0	Syst. 15"	Diesel	FWD	1991	120	163	03.11-07.12	■
2.0 DTFi	Syst. 15"	Diesel	RWD	1991	120	163	03.11-	■
TRAX (TJ) 10.13-					Closed Off-Road Vehicle (Compact SUV-J Segment)			
1.4		Gasolina	FWD	1364	103	140	08.14-	■
1.8		Gasolina	FWD	1796	103	140	01.14-	■
NISSAN								
ROGUE 01.07-12.15					SUV (Compact SUV-J Segment)			
2.5		Gasolina	FWD	2488	124	169	01.10-11.13	■
2.5 AWD		Gasolina	4WD	2488	124	169	01.10-11.13	■
2.5		Gasolina	FWD	2488	125	170	01.10-11.13	■

LISTA DE APLICACIONES - BUYERS GUIDE

2.5 AWD (QR25DE)		Gasolina	4WD	2488	125	170	01.10-11.13	■	
OPEL									
ASTRA H CLASSIC (A04) 01.09-						Hatchback (Compact car-C Segment)			
1.8 (L48) (Z 18 XER)	Syst. 15"	Gasolina	FWD	1796	103	140	02.13-05.14	■	
1.7 CDTI (L48) (A 17 DTR)	Syst. 15"	Diesel	FWD	1686	92	125	01.09-05.14	■	
1.7 CDTI (L48) (Z 17 DTR)	Syst. 15"	Diesel	FWD	1686	92	125	01.09-05.14	■	
ASTRA J (P10) 09.09-10.15						Estate Van (Compact car-C Segment)			
1.3 CDTI (35) (A 13 DTE)	Syst. 15"	Diesel	FWD	1248	70	95	10.12-10.15	■	
1.6 CDTi (35) (B 16 DTL)	Syst. 15"	Diesel	FWD	1598	81	110	01.14-10.15	■	
1.7 CDTI (35) (A 17 DTF)	Syst. 15"	Diesel	FWD	1686	96	131	10.12-10.15	■	
1.7 CDTI (35) (A 17 DTS)	Syst. 15"	Diesel	FWD	1686	96	131	10.12-10.15	■	
2.0 CDTI (35) (A 20 DTH)	Syst. 15"	Diesel	FWD	1956	121	165	10.12-10.15	■	
ASTRA J (P10) 09.09-10.15						Hatchback Van (Compact car-C Segment)			
1.3 CDTI (68) (A 13 DTE)	Syst. 15"	Diesel	FWD	1248	70	95	05.13-10.15	■	
1.6 CDTi (68) (B 16 DTL)	Syst. 15"	Diesel	FWD	1598	81	110	01.14-10.15	■	
1.6 CDTi		Diesel	FWD	1598	100	136	05.13-10.15	■	
1.7 CDTI (68) (A 17 DTC)	Syst. 15"	Diesel	FWD	1686	81	110	05.13-10.15	■	
1.7 CDTI (68) (A 17 DTE)	Syst. 15"	Diesel	FWD	1686	81	110	05.13-10.15	■	
ASTRA J (P10) 09.09-04.16						Hatchback (Compact car-C Segment)			
1.4 Turbo (68) (A 14 NEL)	Syst. 15"	Gasolina	FWD	1364	88	120	10.10-10.15	■	
1.4 Turbo (68) (B 14 NEL)	Syst. 15"	Gasolina	FWD	1364	88	120	10.10-10.15	■	
1.4 Turbo (68) (A 14 NET)	Syst. 15"	Gasolina	FWD	1364	103	140	12.09-10.15	■	
1.4 Turbo (68) (B 14 NET)	Syst. 15"	Gasolina	FWD	1364	103	140	12.09-10.15	■	
1.4 (68) (A 14 XEL)	Syst. 15"	Gasolina	FWD	1398	64	87	12.09-10.15	■	
1.4 (68) (A 14 XER)	Syst. 15"	Gasolina	FWD	1398	74	100	12.09-10.15	■	
1.4 (68) (B 14 XER)	Syst. 15"	Gasolina	FWD	1398	74	100	12.09-10.15	■	
1.6 (68) (A 16 XER)	Syst. 15"	Gasolina	FWD	1598	85	115	12.09-10.15	■	
1.6 (68) (B 16 XER)	Syst. 15"	Gasolina	FWD	1598	85	115	12.09-10.15	■	
1.6 SIDI (68) (A 16 XHT)	Syst. 15"	Gasolina	FWD	1598	125	170	12.12-10.15	■	
1.6 SIDI (68) (B 16 SHL)	Syst. 15"	Gasolina	FWD	1598	125	170	12.12-10.15	■	
1.6 Turbo (68) (A 16 LET)	Syst. 15"	Gasolina	FWD	1598	132	180	12.09-10.15	■	
1.6 Turbo 4x4 (68) (A 16 LET)	Syst. 15"	Gasolina	4WD	1598	132	180	12.09-10.15	■	
1.4 LPG (68) (A 14 NET)	Syst. 15"	Gasol./Gas (LPG)	FWD	1364	103	140	01.12-10.15	■	
1.3 CDTI (68) (A 13 DTE)	Syst. 15"	Diesel	FWD	1248	70	95	12.09-10.15	■	
1.6 CDTi (68) (B 16 DTL)	Syst. 15"	Diesel	FWD	1598	81	110	02.14-10.15	■	
1.6 CDTi (68) (B 16 DTH)	Syst. 15"	Diesel	FWD	1598	100	136	11.13-10.15	■	
1.7 CDTI (68)		Diesel	FWD	1686	74	101	10.10-10.15	■	
1.7 CDTI (68) (A 17 DTC)	Syst. 15"	Diesel	FWD	1686	81	110	09.09-10.15	■	
1.7 CDTI (68) (A 17 DTE)	Syst. 15"	Diesel	FWD	1686	81	110	09.09-10.15	■	
1.7 CDTI (68) (A 17 DTJ)	Syst. 15"	Diesel	FWD	1686	81	110	09.09-10.15	■	
1.7 CDTI (68) (A 17 DTR)	Syst. 15"	Diesel	FWD	1686	92	125	12.09-10.15	■	
1.7 CDTI (68) (A 17 DTF)	Syst. 15"	Diesel	FWD	1686	96	131	07.11-10.15	■	
1.7 CDTI (68) (A 17 DTS)	Syst. 15"	Diesel	FWD	1686	96	131	07.11-10.15	■	
2.0 CDTi (A 20 DTH)	Syst. 15"	Diesel	FWD	1956	96	131	10.14-10.15	■	
2.0 CDTI (68) (A 20 DTH)	Syst. 15"	Diesel	FWD	1956	118	160	09.09-10.15	■	
2.0 CDTI (68) (A 20 DTH)	Syst. 15"	Diesel	FWD	1956	121	165	06.11-10.15	■	
2.0 Biturbo CDTI (68) (A 20 DTR)	Syst. 15"	Diesel	FWD	1956	143	194	09.12-10.15	■	

LISTA DE APLICACIONES - BUYERS GUIDE

ASTRA J 06.12-						Saloon (Compact car-C Segment)			
1.4 Turbo (69) (A 14 NEL)	Syst. 15"	Gasolina	FWD	1364	88	120	06.12-10.15	■	
1.4 Turbo (69) (B 14 NEL)	Syst. 15"	Gasolina	FWD	1364	88	120	06.12-10.15	■	
1.4 Turbo (69) (A 14 NET)	Syst. 15"	Gasolina	FWD	1364	103	140	06.12-06.18	■	
1.4 Turbo (69) (B 14 NET)	Syst. 15"	Gasolina	FWD	1364	103	140	06.12-06.18	■	
1.4 (A 14 XEL)	Syst. 15"	Gasolina	FWD	1398	64	87	01.14-10.15	■	
1.4 (69) (A 14 XER)	Syst. 15"	Gasolina	FWD	1398	74	101	06.12-10.15	■	
1.4 (69) (B 14 XER)	Syst. 15"	Gasolina	FWD	1398	74	101	06.12-10.15	■	
1.6 (69) (A 16 XER)	Syst. 15"	Gasolina	FWD	1598	85	116	06.12-06.18	■	
1.6 (69) (B 16 XER)	Syst. 15"	Gasolina	FWD	1598	85	116	06.12-06.18	■	
1.6 SIDI (69) (A 16 XHT)	Syst. 15"	Gasolina	FWD	1598	125	170	06.12-10.15	■	
1.6 Turbo (69) (A 16 LET)	Syst. 15"	Gasolina	FWD	1598	132	180	06.12-10.13	■	
1.4 Turbo LPG (69) (A 14 NET)	Syst. 15"	Gasol./Gas (LPG)	FWD	1364	103	140	07.14-06.18	■	
1.3 CDTI (69) (A 13 DTE)	Syst. 15"	Diesel	FWD	1248	70	95	06.12-10.15	■	
1.6 CDTi (69) (B 16 DTL)	Syst. 15"	Diesel	FWD	1598	81	110	04.14-06.18	■	
1.6 CDTi (69) (B 16 DTH)	Syst. 15"	Diesel	FWD	1598	100	136	01.14-06.18	■	
1.7 CDTI (69) (A 17 DTC)	Syst. 15"	Diesel	FWD	1686	81	110	06.12-10.15	■	
1.7 CDTI (69) (A 17 DTE)	Syst. 15"	Diesel	FWD	1686	81	110	06.12-10.15	■	
1.7 CDTI (69) (A 17 DTJ)	Syst. 15"	Diesel	FWD	1686	81	110	06.12-10.15	■	
1.7 CDTI (69) (A 17 DTF)	Syst. 15"	Diesel	FWD	1686	96	131	06.12-10.15	■	
1.7 CDTI (69) (A 17 DTS)	Syst. 15"	Diesel	FWD	1686	96	131	06.12-10.15	■	
ASTRA J GTC 10.11-						Hatchback (Compact car-C Segment)			
1.4 (08) (A 14 NEL)	Syst. 15"	Gasolina	FWD	1364	88	120	10.11-04.18	■	
1.4 (08) (B 14 NEL)	Syst. 15"	Gasolina	FWD	1364	88	120	10.11-04.18	■	
1.4 Turbo (08) (A 14 NET)	Syst. 15"	Gasolina	FWD	1364	103	140	10.11-04.18	■	
1.4 Turbo (08) (B 14 NET)	Syst. 15"	Gasolina	FWD	1364	103	140	10.11-04.18	■	
1.4 (08) (A 14 XER)	Syst. 15"	Gasolina	FWD	1398	74	101	10.11-11.13	■	
1.6 SIDI (08) (A 16 XHT)	Syst. 15"	Gasolina	FWD	1598	125	170	12.12-04.18	■	
1.6 SIDI (08) (B 16 SHL)	Syst. 15"	Gasolina	FWD	1598	125	170	12.12-04.18	■	
1.6 Turbo (08) (A 16 LET)	Syst. 15"	Gasolina	FWD	1598	132	180	10.11-06.13	■	
1.6 SIDI (08) (A 16 SHT)	Syst. 15"	Gasolina	FWD	1598	147	200	07.13-04.18	■	
1.6 SIDI (08) (B 16 SHT)	Syst. 15"	Gasolina	FWD	1598	147	200	07.13-04.18	■	
1.8 (08) (A 18 XER)	Syst. 15"	Gasolina	FWD	1796	103	140	10.11-10.13	■	
2.0 OPC Turbo (08) (A 20 NFT)	Syst. 15"	Gasolina	FWD	1998	206	280	04.12-04.18	■	
2.0 OPC Turbo (08) (B 20 NFT)	Syst. 15"	Gasolina	FWD	1998	206	280	04.12-04.18	■	
1.6 CDTI (08) (B 16 DTL)	Syst. 15"	Diesel	FWD	1598	81	110	07.14-04.18	■	
1.6 CDTI (08) (B 16 DTH)	Syst. 15"	Diesel	FWD	1598	100	136	07.14-04.18	■	
1.7 CDTI (08) (A 17 DTC)	Syst. 15"	Diesel	FWD	1686	81	110	03.12-10.13	■	
1.7 CDTI (08) (A 17 DTE)	Syst. 15"	Diesel	FWD	1686	81	110	03.12-10.13	■	
1.7 CDTI (08) (A 17 DTJ)	Syst. 15"	Diesel	FWD	1686	81	110	03.12-10.13	■	
1.7 CDTI (08) (A 17 DTF)	Syst. 15"	Diesel	FWD	1686	96	131	03.12-06.14	■	
1.7 CDTI (08) (A 17 DTS)	Syst. 15"	Diesel	FWD	1686	96	131	03.12-06.14	■	
2.0 CDTI (08) (A 20 DTH)	Syst. 15"	Diesel	FWD	1956	96	131	01.12-10.15	■	
2.0 CDTI (08) (A 20 DTH)	Syst. 15"	Diesel	FWD	1956	121	165	01.12-06.15	■	
2.0 BiTurbo CDTI (08) (A 20 DTR)	Syst. 15"	Diesel	FWD	1956	143	194	10.13-06.15	■	
ASTRA J Sports Tourer (P10) 10.10-						Estate (Compact car-C Segment)			
1.4 Turbo (35) (A 14 NEL)	Syst. 15"	Gasolina	FWD	1364	88	120	10.10-10.15	■	
1.4 Turbo (35) (B 14 NEL)	Syst. 15"	Gasolina	FWD	1364	88	120	10.10-10.15	■	
1.4 Turbo (35) (A 14 NET)	Syst. 15"	Gasolina	FWD	1364	103	140	10.10-10.15	■	
1.4 Turbo (35) (B 14 NET)	Syst. 15"	Gasolina	FWD	1364	103	140	10.10-10.15	■	

LISTA DE APLICACIONES - BUYERS GUIDE

1.4 (35) (A 14 XEL)	Syst. 15"	Gasolina	FWD	1398	64	87	10.10-10.15	■
1.4 (35) (A 14 XER)	Syst. 15"	Gasolina	FWD	1398	74	101	10.10-10.15	■
1.4 (35) (B 14 XER)	Syst. 15"	Gasolina	FWD	1398	74	101	10.10-10.15	■
1.6 (35) (A 16 XER)	Syst. 15"	Gasolina	FWD	1598	85	116	10.10-10.15	■
1.6 (35) (B 16 XER)	Syst. 15"	Gasolina	FWD	1598	85	116	10.10-10.15	■
1.6 SIDI (35) (A 16 XHT)	Syst. 15"	Gasolina	FWD	1598	125	170	12.12-10.15	■
1.6 SIDI (35) (B 16 SHL)	Syst. 15"	Gasolina	FWD	1598	125	170	12.12-10.15	■
1.6 Turbo (35) (A 16 LET)	Syst. 15"	Gasolina	FWD	1598	132	180	10.10-10.15	■
1.4 LPG (35) (A 14 NET)	Syst. 15"	Gasol./Gas (LPG)	FWD	1364	103	140	12.11-10.15	■
1.6 LPG (35)	Syst. 15"	Gasol./Gas (LPG)	FWD	1598	84	114	10.12-10.15	■
1.3 CDTI (35) (A 13 DTE)	Syst. 15"	Diesel	FWD	1248	70	95	10.10-10.14	■
1.6 CDTi (35) (B 16 DTL)	Syst. 15"	Diesel	FWD	1598	81	110	02.14-10.15	■
1.6 CDTi (35) (B 16 DTH)	Syst. 15"	Diesel	FWD	1598	100	136	11.13-10.15	■
1.7 CDTI (35) (A 17 DTL)	Syst. 15"	Diesel	FWD	1686	74	101	10.10-10.15	■
1.7 CDTI (35) (A 17 DTN)	Syst. 15"	Diesel	FWD	1686	74	101	10.10-10.15	■
1.7 CDTI (35) (A 17 DTC)	Syst. 15"	Diesel	FWD	1686	81	110	10.10-10.15	■
1.7 CDTI (35) (A 17 DTE)	Syst. 15"	Diesel	FWD	1686	81	110	10.10-10.15	■
1.7 CDTI (35) (A 17 DTJ)	Syst. 15"	Diesel	FWD	1686	81	110	10.10-10.15	■
1.7 CDTI (35) (A 17 DTR)	Syst. 15"	Diesel	FWD	1686	92	125	10.10-10.15	■
1.7 CDTI (35) (A 17 DTF)	Syst. 15"	Diesel	FWD	1686	96	131	10.10-10.15	■
1.7 CDTI (35) (A 17 DTS)	Syst. 15"	Diesel	FWD	1686	96	131	10.10-10.15	■
2.0 CDTI (35)	Syst. 15"	Diesel	FWD	1956	96	131	01.14-10.15	■
2.0 CDTI (35) (A 20 DTH)	Syst. 15"	Diesel	FWD	1956	118	160	10.10-10.15	■
2.0 CDTI (35) (A 20 DTH)	Syst. 15"	Diesel	FWD	1956	121	165	08.11-10.15	■
2.0 Biturbo CDTI (35) (A 20 DTR)	Syst. 15"	Diesel	FWD	1956	143	194	09.12-10.15	■
MOKKA / MOKKA X (J13) 06.12-				SUV (Mini SUV-J Segment)				
1.4 (_76) (D 14 NEL)		Gasolina	FWD	1364	88	120	06.18-12.19	■
1.4 (_76) (A 14 NET)		Gasolina	FWD	1364	103	140	04.13-12.19	■
1.4 (_76) (B 14 NET)		Gasolina	FWD	1364	103	140	04.13-12.19	■
1.4 (_76) (D 14 NET)		Gasolina	FWD	1364	103	140	04.13-12.19	■
1.4 4x4 (_76) (A 14 NET)		Gasolina	4WD	1364	103	140	06.12-12.19	■
1.4 4x4 (_76) (B 14 NET)		Gasolina	4WD	1364	103	140	06.12-12.19	■
1.4 4x4 (_76) (D 14 NET)		Gasolina	4WD	1364	103	140	06.12-12.19	■
1.4 4x4 (_76) (B 14 XFT)		Gasolina	4WD	1399	112	152	06.16-12.19	■
1.6 (_76) (A 16 XER)		Gasolina	FWD	1598	85	116	06.12-12.19	■
1.6 (_76) (B 16 XER)		Gasolina	FWD	1598	85	116	06.12-12.19	■
1.6 (_76) (D 16 XER)		Gasolina	FWD	1598	85	116	06.12-12.19	■
1.8 (_76) (A 18 XER)		Gasolina	FWD	1796	103	140	01.13-12.19	■
1.8 4x4 (_76) (A 18 XER)		Gasolina	4WD	1796	103	140	01.13-12.19	■
1.4 LPG (_76) (A 14 NET)		Gasol./Gas (LPG)	FWD	1364	103	140	04.13-12.19	■
1.4 LPG (_76) (B 14 NET)		Gasol./Gas (LPG)	FWD	1364	103	140	04.13-12.19	■
1.4 LPG (_76) (D 14 NET)		Gasol./Gas (LPG)	FWD	1364	103	140	04.13-12.19	■
1.6 CDTI (_76) (B 16 DTN)		Diesel	FWD	1598	81	110	06.15-12.19	■
1.6 CDTI (_76) (B 16 DTU)		Diesel	FWD	1598	81	110	06.15-12.19	■
1.6 CDTI 4x4 (_76) (D 16 DTN)		Diesel	4WD	1598	81	110	03.18-12.19	■
1.6 CDTI (_76) (A 16 DTH)		Diesel	FWD	1598	100	136	01.15-12.19	■
1.6 CDTI (_76) (B 16 DTH)		Diesel	FWD	1598	100	136	01.15-12.19	■
1.6 CDTI (_76) (D 16 DTH)		Diesel	FWD	1598	100	136	01.15-12.19	■
1.6 CDTI 4x4 (_76) (B 16 DTH)		Diesel	4WD	1598	100	136	01.15-12.19	■

LISTA DE APLICACIONES - BUYERS GUIDE

1.6 CDTi 4x4 (_76) (D 16 DTH)		Diesel	4WD	1598	100	136	01.15-12.19	■
1.7 CDTi (_76) (A 17 DTS)		Diesel	FWD	1686	96	131	06.12-12.19	■
1.7 CDTi 4x4 (_76) (A 17 DTS)		Diesel	4WD	1686	96	131	06.12-12.19	■
MOKKA / MOKKA X VAN (J13) 06.12-					SUV Van (Mini SUV-J Segment)			
1.6 CDTi (76)		Diesel	FWD	1598	100	136	03.18-	■
VAUXHALL								
ASTRA Mk VI (J) (P10) 10.10-					Estate (Compact car-C Segment)			
1.4 Turbo (A 14 NET)	Syst. 15"	Gasolina	FWD	1364	103	140	10.10-10.15	■
1.4 (A 14 XEL)	Syst. 15"	Gasolina	FWD	1398	64	87	10.10-10.15	■
1.4 (A 14 XER)	Syst. 15"	Gasolina	FWD	1398	74	101	10.10-10.15	■
1.4 (B 14 XER)	Syst. 15"	Gasolina	FWD	1398	74	101	10.10-10.15	■
1.6 (A 16 XER)	Syst. 15"	Gasolina	FWD	1598	85	116	10.10-10.15	■
1.6 (B 16 XER)	Syst. 15"	Gasolina	FWD	1598	85	116	10.10-10.15	■
1.6 Turbo (A 16 LET)	Syst. 15"	Gasolina	FWD	1598	132	180	10.10-10.15	■
1.3 CDTi (A 13 DTE)	Syst. 15"	Diesel	FWD	1248	70	95	10.10-10.15	■
1.6 CDTi (B 16 DTL)	Syst. 15"	Diesel	FWD	1598	81	110	01.14-10.15	■
1.6 CDTi (B 16 DTH)	Syst. 15"	Diesel	FWD	1598	100	136	01.14-10.15	■
1.7 CDTi (A 17 DTC)	Syst. 15"	Diesel	FWD	1686	81	110	10.10-10.15	■
1.7 CDTi (A 17 DTE)	Syst. 15"	Diesel	FWD	1686	81	110	10.10-10.15	■
1.7 CDTi (A 17 DTJ)	Syst. 15"	Diesel	FWD	1686	81	110	10.10-10.15	■
1.7 CDTi (A 17 DTR)	Syst. 15"	Diesel	FWD	1686	92	125	10.10-10.15	■
1.7 CDTi (A 17 DTF)	Syst. 15"	Diesel	FWD	1686	96	131	06.11-10.15	■
1.7 CDTi (A 17 DTS)	Syst. 15"	Diesel	FWD	1686	96	131	06.11-10.15	■
2.0 CDTi (A 20 DTH)	Syst. 15"	Diesel	FWD	1956	118	160	10.10-06.11	■
2.0 CDTi (A 20 DTH)	Syst. 15"	Diesel	FWD	1956	121	165	08.11-10.15	■
2.0 BiTurbo CDTi (A 20 DTR)	Syst. 15"	Diesel	FWD	1956	143	194	12.12-10.15	■
ASTRA Mk VI (J) (P10) 12.09-					Hatchback (Compact car-C Segment)			
1.4 Turbo (A 14 NEL)	Syst. 15"	Gasolina	FWD	1364	88	120	08.10-10.15	■
1.4 Turbo (A 14 NET)	Rim 15, Syst. 15"	Gasolina	FWD	1364	103	140	12.09-10.15	■
1.4 Turbo (B 14 NET)	Rim 15, Syst. 15"	Gasolina	FWD	1364	103	140	12.09-10.15	■
1.4 Turbo (D 14 NET)	Rim 15, Syst. 15"	Gasolina	FWD	1364	103	140	12.09-10.15	■
1.4 (A 14 XEL)	Rim 15, Syst. 15"	Gasolina	FWD	1398	64	87	12.09-10.15	■
1.4 (A 14 XER)	Rim 15, Syst. 15"	Gasolina	FWD	1398	74	100	12.09-10.15	■
1.4 (B 14 XER)	Rim 15, Syst. 15"	Gasolina	FWD	1398	74	100	12.09-10.15	■
1.6 (A 16 XER)	Rim 15, Syst. 15"	Gasolina	FWD	1598	85	115	12.09-10.15	■
1.6 (B 16 XER)	Rim 15, Syst. 15"	Gasolina	FWD	1598	85	115	12.09-10.15	■
1.6 Turbo (A 16 LET)	Rim 16, Syst. 15"	Gasolina	FWD	1598	132	180	12.09-10.15	■
1.3 CDTi (A 13 DTE)	Rim 15, Syst. 15"	Diesel	FWD	1248	70	95	12.09-10.15	■
1.6 CDTi (B 16 DTL)	Syst. 15"	Diesel	FWD	1598	81	110	11.13-10.15	■
1.6 CDTi (B 16 DTH)	Syst. 15"	Diesel	FWD	1598	100	136	11.13-10.15	■
1.7 CDTi (A 17 DTL)	Syst. 15"	Diesel	FWD	1686	74	101	10.10-10.15	■
1.7 CDTi (A 17 DTC)	Rim 15, Syst. 15"	Diesel	FWD	1686	81	110	12.09-10.15	■
1.7 CDTi (A 17 DTE)	Rim 15, Syst. 15"	Diesel	FWD	1686	81	110	12.09-10.15	■
1.7 CDTi (A 17 DTJ)	Rim 15, Syst. 15"	Diesel	FWD	1686	81	110	12.09-10.15	■
1.7 CDTi (A 17 DTR)	Rim 15, Syst. 15"	Diesel	FWD	1686	92	125	12.09-10.15	■
1.7 CDTi (A 17 DTF)	Syst. 15"	Diesel	FWD	1686	96	131	06.11-10.15	■
1.7 CDTi (A 17 DTS)	Syst. 15"	Diesel	FWD	1686	96	131	06.11-10.15	■
2.0 CDTi (A 20 DTH)	Syst. 15"	Diesel	FWD	1956	118	160	12.09-06.11	■
2.0 CDTi (A 20 DTH)	Syst. 15"	Diesel	FWD	1956	121	165	08.11-10.15	■
2.0 BiTurbo CDTi (A 20 DTR)	Syst. 15"	Diesel	FWD	1956	143	194	12.12-10.15	■

LISTA DE APLICACIONES - BUYERS GUIDE

ASTRA Mk VI (J) (P10) 06.12-					Saloon (Compact car-C Segment)			
1.4 Turbo (A 14 NET)	Syst. 15"	Gasolina	FWD	1364	103	140	06.12-10.15	■
1.4 (A 14 XER)	Syst. 15"	Gasolina	FWD	1398	74	101	06.12-10.15	■
1.6 (A 16 XER)	Syst. 15"	Gasolina	FWD	1598	85	116	06.12-10.15	■
1.6 Turbo (A 16 LET)	Syst. 15"	Gasolina	FWD	1598	132	180	06.12-10.15	■
1.3 CDTi (A 13 DTE)	Syst. 15"	Diesel	FWD	1248	70	95	06.12-10.15	■
1.7 CDTi (A 17 DTC)	Syst. 15"	Diesel	FWD	1686	81	110	06.12-10.15	■
1.7 CDTi (A 17 DTE)	Syst. 15"	Diesel	FWD	1686	81	110	06.12-10.15	■
1.7 CDTi (A 17 DTJ)	Syst. 15"	Diesel	FWD	1686	81	110	06.12-10.15	■
1.7 CDTi (A 17 DTF)	Syst. 15"	Diesel	FWD	1686	96	131	06.12-10.15	■
1.7 CDTi (A 17 DTS)	Syst. 15"	Diesel	FWD	1686	96	131	06.12-10.15	■
ASTRA Mk VI (J) GTC (P10) 10.11-					Hatchback (Compact car-C Segment)			
1.4 (A 14 NEL)	Syst. 15"	Gasolina	FWD	1364	88	120	10.11-10.18	■
1.4 (B 14 NEL)	Syst. 15"	Gasolina	FWD	1364	88	120	10.11-10.18	■
1.4 (A 14 NET)	Syst. 15"	Gasolina	FWD	1364	103	140	10.11-04.18	■
1.4 (B 14 NET)	Syst. 15"	Gasolina	FWD	1364	103	140	10.11-04.18	■
1.4 (A 14 XER)	Syst. 15"	Gasolina	FWD	1398	74	101	10.11-10.18	■
1.6 (A 16 LET)	Syst. 15"	Gasolina	FWD	1598	132	180	10.11-10.18	■
1.6 SIDI (A 16 SHT)	Syst. 15"	Gasolina	FWD	1598	147	200	09.13-10.18	■
1.6 SIDI (B 16 SHT)	Syst. 15"	Gasolina	FWD	1598	147	200	09.13-10.18	■
2.0 VXR (A 20 NFT)	Syst. 15"	Gasolina	FWD	1998	206	280	04.12-10.18	■
2.0 VXR (B 20 NFT)	Syst. 15"	Gasolina	FWD	1998	206	280	04.12-10.18	■
1.6 CDTi (B 16 DTL)	Syst. 15"	Diesel	FWD	1598	81	110	07.14-10.18	■
1.6 CDTi (B 16 DTH)	Syst. 15"	Diesel	FWD	1598	100	136	07.14-10.18	■
1.7 CDTi (A 17 DTC)	Syst. 15"	Diesel	FWD	1686	81	110	10.11-10.18	■
1.7 CDTi (A 17 DTE)	Syst. 15"	Diesel	FWD	1686	81	110	10.11-10.18	■
1.7 CDTi (A 17 DTJ)	Syst. 15"	Diesel	FWD	1686	81	110	10.11-10.18	■
1.7 CDTi (A 17 DTF)	Syst. 15"	Diesel	FWD	1686	96	131	10.11-10.18	■
1.7 CDTi (A 17 DTS)	Syst. 15"	Diesel	FWD	1686	96	131	10.11-10.18	■
2.0 CDTi (A 20 DTH)	Syst. 15"	Diesel	FWD	1956	121	165	10.11-10.18	■
2.0 BiTurbo CDTi (A 20 DTR)	Syst. 15"	Diesel	FWD	1956	143	194	12.12-10.18	■
MOKKA / MOKKA X (J13) 06.12-					SUV (Mini SUV-J Segment)			
1.4 (A 14 NET)		Gasolina	FWD	1364	103	140	04.13-12.19	■
1.4 (B 14 NET)		Gasolina	FWD	1364	103	140	04.13-12.19	■
1.4 (D 14 NET)		Gasolina	FWD	1364	103	140	04.13-12.19	■
1.4 4x4 (A 14 NET)		Gasolina	4WD	1364	103	140	06.12-12.19	■
1.4 4x4 (B 14 NET)		Gasolina	4WD	1364	103	140	06.12-12.19	■
1.4 4x4 (D 14 NET)		Gasolina	4WD	1364	103	140	06.12-12.19	■
1.4 4x4 (B 14 XFT)		Gasolina	4WD	1399	112	152	06.16-12.19	■
1.6 (A 16 XER)		Gasolina	FWD	1598	85	116	06.12-12.19	■
1.6 (B 16 XER)		Gasolina	FWD	1598	85	116	06.12-12.19	■
1.6 (D 16 XER)		Gasolina	FWD	1598	85	116	06.12-12.19	■
1.6 CDTi (B 16 DTN)		Diesel	FWD	1598	81	110	06.15-12.19	■
1.6 CDTi (B 16 DTU)		Diesel	FWD	1598	81	110	06.15-12.19	■
1.6 CDTi (A 16 DTH)		Diesel	FWD	1598	100	136	01.15-12.19	■
1.6 CDTi (B 16 DTH)		Diesel	FWD	1598	100	136	01.15-12.19	■
1.6 CDTi (D 16 DTH)		Diesel	FWD	1598	100	136	01.15-12.19	■
1.6 CDTi 4x4 (A 16 DTH)		Diesel	4WD	1598	100	136	01.15-12.19	■
1.6 CDTi 4x4 (B 16 DTH)		Diesel	4WD	1598	100	136	01.15-12.19	■
1.6 CDTi 4x4 (D 16 DTH)		Diesel	4WD	1598	100	136	01.15-12.19	■

LISTA DE APLICACIONES - BUYERS GUIDE

1.7 CDTi (A 17 DTS)	Diesel	FWD	1686	96	131	06.12-12.19
1.7 CDTi 4x4 (A 17 DTS)	Diesel	4WD	1686	96	131	06.12-12.19

