

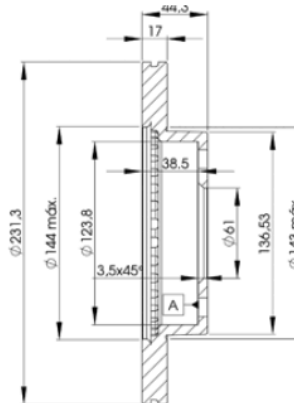
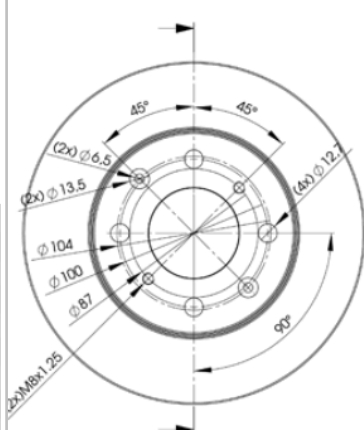
LISTA DE APLICACIONES - BUYERS GUIDE

78BD1702-2



Weight: 6.820

O.E.M.	MAKE
45251-SB2-750	ROVER
45251-SB2-751	ROVER
45251-SB2-752	ROVER
45251-SB2-930	ROVER
45251-SB2-931	ROVER
45251-SB2-932	ROVER
GDB 90803	ROVER
GDB 90814	ROVER
GDB 90825	ROVER



78BD1702-2

E1 90R-02C0074/0039



Ø231.3x17x44.3

MAKE

HONDA

ROVER



Trac.	CC	Kw	CV
-------	----	----	----



Front / Rear

HONDA

ACTY (TN) 10.78-06.87						Platform/Chassis (LCVs-N1 Segment)		
0.5 (EH)		Gasolina	RWD	545	23	31	10.78-06.87	■
ACTY (TN) 08.79-09.86						Van (LCVs-N1 Segment)		
0.6 (TN) (EH)		Gasolina	RWD	545	23	31	08.79-06.86	■
CITY III (3A_, SX8) 02.97-11.99						Saloon (Supermini car-B Segment)		
1.3 (3A2)		Gasolina	FWD	1343	70	95	02.97-11.99	■
1.3 (3A2)		Gasolina	FWD	1343	70	95	12.99-09.03	■
1.5 (3A3) (B15B9)		Gasolina	FWD	1493	77	105	12.99-09.03	■
1.5 (3A3) (D15B7)		Gasolina	FWD	1493	77	105	12.99-09.03	■
1.5 (CG3) (D15B7)		Gasolina	FWD	1493	77	105	02.97-11.99	■
CIVIC III Shuttle (AN, AR) 08.83-12.87						Estate (Supermini car-B Segment)		
1.5 4WD (AR) (EW2)		Gasolina	4WD	1488	63	86	01.85-10.87	■
CIVIC IV / BALLADE (EC, ED, EE, EF) 09.87-10.93						Hatchback (Supermini car-B Segment)		
1.4 L (EC9) (D14A1)		Gasolina	FWD	1396	66	90	10.87-12.91	■
CIVIC IV / BALLADE (ED, EF) 09.87-10.93						Saloon (Supermini car-B Segment)		
1.4 L (ED2) (D14A1)		Gasolina	FWD	1396	66	90	10.87-12.89	■
CIVIC V (EG, EH) 10.91-11.95						Hatchback (Supermini car-B Segment)		
1.3 16V (EG3) (D13B2)		Gasolina	FWD	1343	55	75	10.91-11.95	■
CIVIC VI / BALLADE (EJ, EK, SO) 06.95-03.01						Saloon (Sport compact car-C Segment)		
1.6 (EK1, EJ6)		Gasolina	FWD	1590	88	120	10.95-09.00	■

LISTA DE APLICACIONES - BUYERS GUIDE

CRX / CIVIC CRX (AF, AS) 10.83-10.87					Coupe (Sports car-S Segment)			
1.3 (AF1) (EV2)	Gasolina	FWD	1342	52	71	10.83-10.87	■	
1.5 i (AF) (EW3)	Gasolina	FWD	1488	74	101	10.83-11.86	■	
INSIGHT (ZE) 04.00-12.06					Coupe (Supermini car-B Segment)			
1.0 IMA (ZE1, ZE18, ZE13) (ECA1)	Gasol./el éc.	FWD	995	56	76	04.00-12.06	■	
INTEGRA III (DC) 07.93-11.01					Coupe (Sport compact car-C Segment)			
1.6 i (DC1) (ZC1)	Gasolina	FWD	1590	88	120	09.93-08.01	■	
INTEGRA III (DB6, DB7, DB8, DB9) 09.93-08.01					Saloon (Sport compact car-C Segment)			
1.6 (DB6) (ZC1)	Gasolina	FWD	1590	88	120	09.93-08.01	■	
1.6 4WD (DB9) (ZC1)	Gasolina	4WD	1590	88	120	09.93-08.01	■	
PRELUDE II (AB) 01.83-09.87					Coupe (Sport compact car-C Segment)			
1.8 EX (AAB) (ET3)	Gasolina	FWD	1829	74	101	11.85-04.87	■	
1.8 EX (AAB) (ET4)	Gasolina	FWD	1829	74	101	11.85-04.87	■	
1.8 EX (AAB) (ET2)	Gasolina	FWD	1829	77	105	11.83-04.87	■	
1.8 EX (AAB) (ET3)	Gasolina	FWD	1829	77	105	11.83-04.87	■	
ROVER								
200 (XH) 09.84-09.89					Saloon (Compact car-C Segment)			
216 Vitesse (16 H)	Gasolina	FWD	1598	75	102	09.84-09.89	■	