

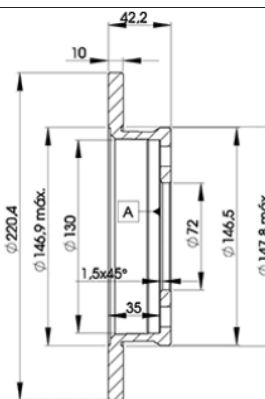
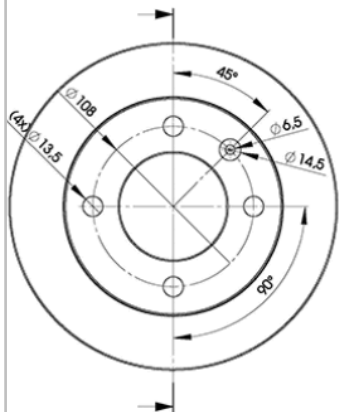
# LISTA DE APLICACIONES - BUYERS GUIDE

## 78BD1991-2



8 424073 143464

Weight: 5.840



## 78BD1991-2

E1 90R-02C0100/0797



Ø220.4x10x42.2

MAKE

FORD



Trac.	CC	Kw	CV		
					Front / Rear

### FORD

#### FIESTA (WFVT) 05.76-11.86

#### Hatchback Van (LCVs-N1 Segment)

1.0 (WFVT) (TKA)	-08/83	Gasolina	FWD	957	29	40	10.77-11.86	■
1.1 (WFVT) (GL1)	04/78-, -08/83	Gasolina	FWD	1117	39	53	10.77-11.86	■
1.1 (WFVT) (GLA)	04/78-, -08/83	Gasolina	FWD	1117	39	53	10.77-11.86	■

#### FIESTA (GFBT) 05.76-08.83

#### Hatchback (Supermini car-B Segment)

0.9 (TKA)	06/76-	Gasolina	FWD	957	29	40	05.76-08.83	■
0.9 (TKW)	06/76-	Gasolina	FWD	957	29	40	05.76-08.83	■
0.9 (TLA)	06/76-	Gasolina	FWD	957	33	45	05.76-08.83	■
1.1 (GLA)	06/76-	Gasolina	FWD	1117	39	53	05.76-08.83	■
1.1 (WFBT) (GLW)		Gasolina	FWD	1117	40	55	02.81-08.83	■
1.3 (J3E)		Gasolina	FWD	1297	49	66	08.77-08.83	■

#### FIESTA II (FVD) 03.83-12.95

#### Hatchback Van (LCVs-N1 Segment)

1.0 (TKB)	-04/89	Gasolina	FWD	957	33	45	08.83-11.89	■
1.4 (F6A)		Gasolina	FWD	1392	52	71	09.86-09.89	■
1.6 D (LTB)		Diesel	FWD	1608	40	54	09.83-09.89	■

#### FIESTA II (FBD) 09.83-11.89

#### Hatchback (Supermini car-B Segment)

1.0 (FBD) (TKB)		Gasolina	FWD	957	33	45	09.83-02.89	■
1.0		Gasolina	FWD	999	33	45	09.83-11.89	■
1.1 (FBD) (GSH)		Gasolina	FWD	1117	36	49	05.86-02.89	■
1.1 (FBD) (GLC)		Gasolina	FWD	1117	37	50	09.83-02.89	■
1.1 (FBD) (GSF)		Gasolina	FWD	1117	37	50	09.83-02.89	■
1.3		Gasolina	FWD	1297	44	60	09.83-09.89	■

## LISTA DE APLICACIONES - BUYERS GUIDE

1.3 (JPC)		Gasolina	FWD	1297	51	69	09.83-09.89	■
1.3 (FBD) (JPC)	-08/86	Gasolina	FWD	1298	51	69	09.83-01.87	■
1.4 (FUBA)	01/86-	Gasolina	FWD	1392	51	69	09.83-01.87	■
1.4 (FBD) (F6A)	vehicles without ABS	Gasolina	FWD	1392	52	71	10.86-02.89	■
1.4 (FBD) (F6C)	vehicles without ABS	Gasolina	FWD	1392	52	71	10.86-02.89	■
1.4 (FBD) (FUD)		Gasolina	FWD	1392	54	73	02.87-02.89	■
1.4 (FBD) (FUB)	01/86-, -04/89	Gasolina	FWD	1392	55	75	10.85-11.89	■
1.6 D (FBD) (LTB)		Diesel	FWD	1608	40	54	04.84-02.89	■