

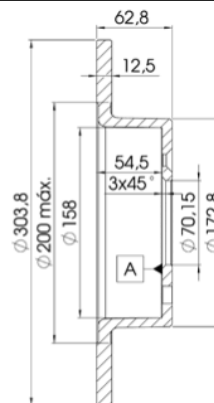
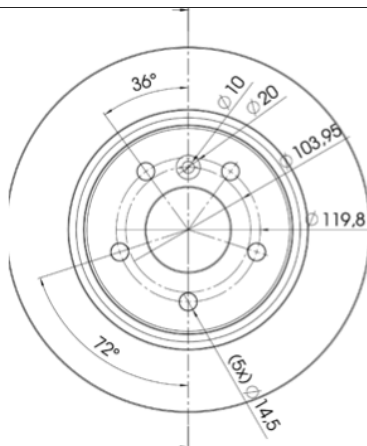
LISTA DE APLICACIONES - BUYERS GUIDE

78BD2004-2



Weight: 13.956

O.E.M.	MAKE
NTC-8781	LAND ROVER
SDB000210	LAND ROVER
SDB000470	LAND ROVER



78BD2004-2



90R-02C0415/0032



Ø304x12.6x62.7

MAKE
LAND ROVER



Trac.	CC	Kw	CV
-------	----	----	----



Front / Rear

LAND ROVER

DISCOVERY II (L318) 10.98-08.04

Closed Off-Road Vehicle (Executive SUV-J Segment)

4.0 V8 4x4 (35 D)		Gasolina	4WD	3947	136	185	11.98-06.04	■
4.0 V8 4x4 (56 D)		Gasolina	4WD	3947	136	185	11.98-06.04	■
4.0 V8 4x4 (94 D)		Gasolina	4WD	3947	136	185	11.98-06.04	■
2.5 Td5 4x4 (10 P)		Diesel	4WD	2495	102	139	11.98-06.04	■
2.5 Td5 4x4 (15 P)		Diesel	4WD	2495	102	139	11.98-06.04	■

RANGE ROVER II (P38A) 07.94-03.02

Closed Off-Road Vehicle (Executive SUV-J Segment)

4.0 4x4 (42 D)		Gasolina	4WD	3947	136	185	01.95-03.02	■
3.9 4x4 (42 D)		Gasolina	4WD	3947	140	190	07.94-03.02	■
4.6 4x4 (46 D)		Gasolina	4WD	4553	165	224	07.94-03.02	■
4.6 4x4 (60 D)	11/98-	Gasolina	4WD	4554	160	218	06.98-03.02	■
4.6 4x4 (46 D)		Gasolina	4WD	4554	168	228	09.95-03.02	■
2.5 D 4x4		Diesel	4WD	2496	83	113	08.94-03.02	■
2.5 D 4x4 (25 6T (BMW))		Diesel	4WD	2497	100	136	07.94-03.02	■

RANGE ROVER III (L322) 03.02-12.12

Closed Off-Road Vehicle (Luxury Crossover SUV-J Segment)

4.2 Supercharged 4x4		Gasolina	4WD	4196	298	405	09.05-12.09	■
4.2 4x4 (428PS)		Gasolina	4WD	4197	291	396	05.05-08.12	■
4.4 4x4 (448PN)		Gasolina	4WD	4394	220	299	08.04-08.12	■
4.4 4x4 (448PN)		Gasolina	4WD	4394	225	306	05.05-08.12	■
4.4 4x4 (M62 B44)		Gasolina	4WD	4398	210	286	03.02-08.05	■
3.0 D 4x4 (306D1)		Diesel	4WD	2926	130	177	03.02-08.12	■