

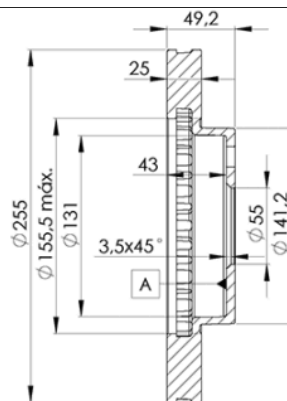
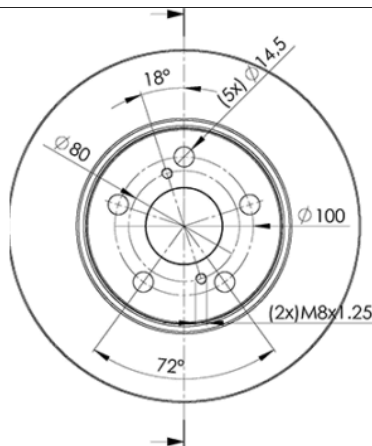
LISTA DE APLICACIONES - BUYERS GUIDE

78BD2047-2



Weight: 9.944

O.E.M.	MAKE
43512-20470	LEXUS
43512-20480	TOYOTA
43512-20580	TOYOTA
43512-20612	TOYOTA
43512-20700	TOYOTA
43512-21010	TOYOTA



78BD2047-2



90R-02C0452/0104



Ø255x25x49.2

MAKE
LEXUS
TOYOTA



Trac.	CC	Kw	CV
-------	----	----	----



Front / Rear

LEXUS

CT (ZWA10_) 12.10-					Hatchback (Compact car-C Segment)			
200h (ZWA10_) (2ZR-FXE)		Gasol./el éc.	FWD	1798	73	99	12.10-09.20	■
200h (ZWA10_) (5ZR-FXE)		Gasol./el éc.	FWD	1798	73	99	12.10-09.20	■

TOYOTA

ALLION (_T24_) 06.01-06.07					Saloon (Compact car-C Segment)			
1.5 (NZT240) (1NZ-FE)		Gasolina	FWD	1497	80	109	06.01-04.05	■
1.8 (ZZT240) (1ZZ-FE)		Gasolina	FWD	1794	92	125	06.01-09.04	■

CALDINA (_T19_) 12.87-05.02					Estate (Executive car-E Segment)			
1.8 (AT191) (7A-FE)		Gasolina	FWD	1762	79	107	02.92-09.97	■
1.8 (ST190_, ST190G) (4S-FE)		Gasolina	FWD	1838	92	125	11.92-01.96	■
2.0 (ST191) (3S-FE)		Gasolina	FWD	1998	89	121	02.92-10.97	■
2.0 (ST191) (3S-FE)		Gasolina	FWD	1998	93	126	02.92-09.97	■
2.0 4WD (ST195G_, ST195G) (3S-FE)		Gasolina	4WD	1998	94	129	11.92-07.97	■
2.0 4WD (ST195_, ST195G) (3S-FE)		Gasolina	4WD	1998	99	135	11.92-08.97	■
2.0 (ST191_, ST191G) (3S-FE)		Gasolina	FWD	1998	103	140	11.92-08.97	■
2.0 (ST195) (3S-GE)		Gasolina	4WD	1998	129	175	07.94-09.97	■
2.0 TD (CT190G) (2C)		Diesel	FWD	1974	54	73	06.94-09.97	■
2.0 TD (CT190) (2C)		Diesel	FWD	1974	56	76	06.94-09.97	■
2.0 TD (CT190_, CT190G) (2C-T)		Diesel	FWD	1974	65	88	01.96-08.97	■

CALDINA II (_T21_) 08.97-09.02					Estate (Executive car-E Segment)			
1.8 (AT211G) (7A-FE)		Gasolina	FWD	1762	85	116	10.97-08.02	■
2.0 4WD (ST215G_, ST215G) (3S-FE)		Gasolina	4WD	1998	99	135	08.97-09.02	■

LISTA DE APLICACIONES - BUYERS GUIDE

2.0 (ST210G_, ST210G) (3S-FE)		Gasolina	FWD	1998	103	140	08.97-09.02	■
2.2 TD (CT216_) (3C-TE)		Diesel	FWD	2184	69	94	08.97-09.02	■
2.2 TD 4WD (CT216_, CT216G) (3C-TE)		Diesel	4WD	2184	69	94	08.97-09.02	■
CARINA VII (_T21_) 08.96-08.01					Saloon (Compact car-C Segment)			
1.5 (AT212)		Gasolina	FWD	1498	74	101	08.96-08.01	■
CARINA E VI (_T19_) 04.92-09.97					Hatchback (Compact car-C Segment)			
1.6 16V (AT190_, AT190R) (4A-FE)		Gasolina	FWD	1587	78	106	10.95-09.97	■
1.6 GLI (AT190) (4A-FE)	-08/93	Gasolina	FWD	1587	79	107	04.92-09.97	■
1.8 GL (AT191) (7A-FE)		Gasolina	FWD	1762	92	125	10.94-09.97	■
CARINA E VI (_T19_) 04.92-09.97					Saloon (Compact car-C Segment)			
1.6 (AT190) (4A-FE)	-08/93	Gasolina	FWD	1587	79	107	01.93-09.97	■
1.8 GL (AT191) (7A-FE)		Gasolina	FWD	1762	92	125	10.94-09.97	■
CARINA E VI Sports Wagon (_T19_) 02.92-09.97					Estate (Compact car-C Segment)			
1.6 GLI (AT190_, AT190R) (4A-FE)	-02/95	Gasolina	FWD	1587	79	107	01.93-09.97	■
1.6 (AT190) (4A-FE)	-02/95	Gasolina	FWD	1587	85	115	04.92-09.97	■
1.8 i (AT191_, AT191R) (7A-FE)	-03/96	Gasolina	FWD	1762	79	107	02.95-09.97	■
1.8 GL (AT191) (7A-FE)		Gasolina	FWD	1762	92	125	10.94-09.97	■
2.0 D (CT190_, CT190R) (2C)		Diesel	FWD	1974	54	73	01.93-09.97	■
CELICA VI (_T20_) 09.93-11.99					Coupe (Sports car-S Segment)			
1.8 i 16V (AT200) (7A-FE)		Gasolina	FWD	1762	85	116	11.93-11.99	■
CELICA VII (_T23_) 08.99-03.06					Coupe (Sports car-S Segment)			
1.8 16V VT-i (ZZT230_, ZZT230) (1ZZ-FE)		Gasolina	FWD	1794	105	143	08.99-07.05	■
CORONA X (_T19_) 10.91-04.98					Saloon (Large family car-D Segment)			
1.6 (AT190) (4A-FE)		Gasolina	FWD	1587	73	99	02.92-09.97	■
2.0 (ST191_, ST191) (3S-FE)		Gasolina	FWD	1998	93	126	02.92-09.97	■
CORONA XI PREMIO (_T21_) 01.96-11.01					Saloon (Large family car-D Segment)			
1.8 i 16V (AT211_, AT211)		Gasolina	FWD	1762	85	116	01.96-11.01	■
CURREN (ST20_) 11.93-10.98					Coupe (Compact car-C Segment)			
1.8 (AT200) (7A-FE)		Gasolina	FWD	1762	85	116	11.93-10.98	■
2.0 (ST206, ST207) (3S-FE)		Gasolina	FWD	1998	103	140	02.94-07.98	■
OPA (ZCT1_, ACT1_) 04.00-04.05					Estate (Executive car-E Segment)			
1.8 4WD (ZTC15) (1ZZ-FE)		Gasolina	4WD	1794	92	125	04.00-08.03	■
1.8 (ZCT10) (1ZZ-FE)		Gasolina	FWD	1794	97	132	04.00-08.03	■
1.8 (ZTC10) (1ZZ-FE)		Gasolina	FWD	1794	100	136	04.00-08.03	■
2.0 (ACT10) (1AZ-FSE)		Gasolina	FWD	1998	112	152	08.00-04.05	■
PREMIO (_T24_) 12.01-06.07					Saloon (Executive car-E Segment)			
1.5 (NZE240_, NZE240) (1NZ-FE)		Gasolina	FWD	1497	80	109	12.01-05.07	■
1.8 (ZZT240)		Gasolina	FWD	1794	97	132	12.01-06.07	■
PRIUS III (_W3_) 06.08-					Hatchback (Executive car-E Segment)			
1.8 Hybrid (ZVW3_) (2ZR-FXE)		Gasol./el éc.	FWD	1798	73	99	06.08-	■
VISTA V (_V5_) 06.98-08.03					Saloon (Executive car-E Segment)			
1.8 (ZZV50) (1ZZ-FE)		Gasolina	FWD	1794	96	131	06.98-08.03	■
Will VS (_E12_) 03.01-04.04					Hatchback (Compact car-C Segment)			
1.5 VVTi (NZE127) (1NZ-FE)		Gasolina	FWD	1497	81	110	03.01-04.04	■