

LISTA DE APLICACIONES - BUYERS GUIDE

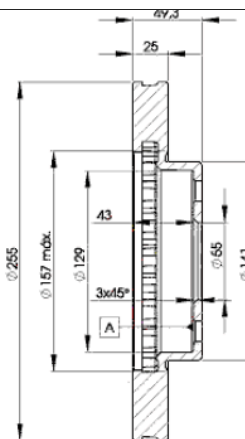
78BD2100-2



8 424073 143631

Weight: 10.024

O.E.M.	MAKE
43512-02070	TOYOTA



78BD2100-2

E1 90R-02C0452/0104



Ø255x25x49.5

MAKE
LIFAN
TOYOTA



Trac.	CC	Kw	CV
-------	----	----	----



Front / Rear

LIFAN

620 06.08-					Saloon (Compact car-C Segment)			
1.6 (LF481Q3)	Gasolina	FWD	1587	78	106	06.08-12.16	■	
1.6	Gasolina	FWD	1596	85	116	11.08-12.10	■	

TOYOTA

COROLLA IX / ALTIS / AXIO-ALTIS (_E12_) 08.00-12.08					Saloon (Compact executive car-D Segment)			
1.4 VVT-i (ZZE120_, ZZE120R) (4ZZ-FE)		Gasolina	FWD	1398	71	97	10.01-10.06	■
1.5 (NZE121) (1NZ-FE)		Gasolina	FWD	1497	80	109	11.01-07.07	
1.5		Gasolina	FWD	1497	81	110	06.07-07.07	
1.6 VVT-i (ZZE121_, ZZE121R) (3ZZ-FE)		Gasolina	FWD	1598	81	110	10.01-03.08	
1.6		Gasolina	FWD	1598	91	124	11.06-07.07	
1.8 (ZZE122) (1ZZ-FE)		Gasolina	FWD	1794	92	125	05.02-05.04	
1.8 (ZZE130)		Gasolina	FWD	1794	97	132	09.02-12.05	
1.8 (ZZE122) (1ZZ-FE)		Gasolina	FWD	1794	100	136	11.01-10.06	
1.4 D-4D (NDE120_, NDE120R) (1ND-TV)		Diesel	FWD	1364	66	90	06.04-10.06	
COROLLA IX / RUNX (_E12_) 01.01-04.08					Hatchback (Compact executive car-D Segment)			
1.4 VVT-i (ZZE120_, ZZE120R) (4ZZ-FE)		Gasolina	FWD	1398	71	97	11.01-02.07	■
1.6 VVT-i (ZZE121_, ZZE121R) (3ZZ-FE)		Gasolina	FWD	1598	81	110	01.02-12.06	
1.6 VVTi		Gasolina	FWD	1598	91	124	10.06-02.07	
1.4 D (NDE120_, NDE120R) (1ND-TV)		Diesel	FWD	1364	66	90	07.04-02.07	
COROLLA VIII (_E11_) 09.00-10.01					Estate Van (LCVs-N1 Segment)			
2.0 D4d (CDE110) (1CD-FTV)	vehicles with ABS	Diesel	FWD	1995	66	90	09.00-10.01	■

LISTA DE APLICACIONES - BUYERS GUIDE

COROLLA VIII (_E11_) 04.97-10.01					Estate (Compact executive car-D Segment)			
1.4 (EE111_, EE111R) (4E-FE)	09/99-, vehicles with ABS	Gasolina	FWD	1332	63	86	04.97-02.00	■
1.4 16V (ZZE111_, ZZE111R) (4ZZ-FE)	vehicles with ABS	Gasolina	FWD	1398	71	97	02.00-10.01	■
1.6 Aut. (AE111_, AE111R) (4A-FE)	09/99-, vehicles with ABS	Gasolina	FWD	1587	79	107	04.97-02.00	■
1.6 (AE111_, AE111R) (4A-FE)	09/99-, vehicles with ABS	Gasolina	FWD	1587	81	110	04.97-02.00	■
1.6 16V (ZZE112_, ZZE112R) (3ZZ-FE)	vehicles with ABS	Gasolina	FWD	1598	81	110	02.00-10.01	■
1.8 (7A-FE)	09/99-, vehicles with ABS	Gasolina	FWD	1762	81	110	10.97-10.01	■
1.8 4WD (AE115_, AE115R) (7A-FE)	09/99-, vehicles with ABS	Gasolina	4WD	1762	81	110	04.97-10.01	■
1.8		Gasolina	FWD	1838	92	125	05.97-08.01	■
1.9 D (WZE110_, WZE110R) (1WZ)	vehicles with ABS	Diesel	FWD	1867	51	69	02.00-10.01	■
2.0 D (CE110_, CE110R) (2C-E)	09/99-, vehicles with ABS	Diesel	FWD	1975	53	72	04.97-02.00	■
2.0 D-4D (CDE110_, CDE110R) (1CD-FTV)	vehicles with ABS	Diesel	FWD	1995	66	90	09.00-10.01	■
2.0 D4d GS		Diesel	RWD	1995	81	110	08.00-10.01	■
COROLLA VIII (_E11_) 04.97-01.02					Hatchback (Compact executive car-D Segment)			
1.4 (EE111_, EE111R) (4E-FE)	05/99-, vehicles with ABS	Gasolina	FWD	1332	63	86	05.97-09.99	■
1.4 (ZZE111_, ZZE111R) (4ZZ-FE)	vehicles with ABS	Gasolina	FWD	1398	71	97	10.99-01.02	■
1.6 Aut. (AE111_) (4A-FE)	09/99-, vehicles with ABS	Gasolina	FWD	1587	79	107	05.97-02.00	■
1.6 (AE111_, AE111R) (4A-FE)	09/99-, vehicles with ABS	Gasolina	FWD	1587	81	110	05.97-08.01	■
1.6 (ZZE112_, ZZE112R) (3ZZ-FE)	vehicles with ABS	Gasolina	FWD	1598	81	110	02.00-01.02	■
1.8 (AE112)	09/99-, vehicles with ABS	Gasolina	FWD	1762	85	116	09.98-11.01	■
2.0 D (CE110) (2C-E)	05/99-, vehicles with ABS	Diesel	FWD	1975	53	72	04.97-02.00	■
2.0 D-4D (CDE110_, CDE110R) (1CD-FTV)	vehicles with ABS	Diesel	FWD	1995	66	90	09.00-01.02	■
COROLLA VIII (_E11_) 05.95-02.03					Saloon (Compact executive car-D Segment)			
1.4 (EE111_, EE111R) (4E-FE)	vehicles with ABS	Gasolina	FWD	1332	63	86	05.97-09.99	■
1.4 16V (ZZE111_, ZZE111R) (4ZZ-FE)	vehicles with ABS	Gasolina	FWD	1398	71	97	02.00-11.01	■
1.5		Gasolina	FWD	1497	78	106	09.99-10.01	■
1.6 Aut. (AE111_, AE111R) (4A-FE)	05/99-, vehicles with ABS	Gasolina	FWD	1587	79	107	04.97-02.00	■
1.6	05/99-, vehicles with ABS	Gasolina	FWD	1587	81	110	04.97-02.00	■
1.6 16V (ZZE112_, ZZE112R)	vehicles with ABS	Gasolina	FWD	1598	81	110	08.99-12.01	■
1.6 16V (ZZE112_, ZZE112R) (3ZZ-FE)	vehicles with ABS	Gasolina	FWD	1598	81	110	08.99-12.01	■
1.8 (AE112_) (7A-FE)	09/99-, vehicles with ABS	Gasolina	FWD	1762	81	110	10.97-10.01	■
1.8 (AE112) (7A-FE)	09/99-, vehicles with ABS	Gasolina	FWD	1762	85	116	04.97-06.02	■
1.9 D (WZE110_, WZE110R) (1WZ)	vehicles with ABS	Diesel	FWD	1867	51	69	02.00-11.01	■
2.0 D (CE110_, CE110R) (2C-E)	09/99-, vehicles with ABS	Diesel	FWD	1975	53	72	04.97-02.00	■
2.0 D-4D (CDE110_, CDE110R) (1CD-FTV)	vehicles with ABS	Diesel	FWD	1995	66	90	09.00-11.01	■
2.0 D-4D		Diesel	RWD	1995	81	110	08.00-10.01	■
2.2 TD	05/99-, vehicles with ABS	Diesel	RWD	2184	66	90	04.98-10.01	■
COROLLA VIII Compact (_E11_) 04.97-01.02					Hatchback (Compact executive car-D Segment)			
1.4 (EE111_, EE111R) (4E-FE)	05/99-, vehicles with ABS	Gasolina	FWD	1332	63	86	05.97-09.99	■
1.4 (ZZE111_, ZZE111R) (4ZZ-FE)	vehicles with ABS	Gasolina	FWD	1398	71	97	10.99-01.02	■
1.5		Gasolina	FWD	1497	78	106	09.99-10.01	■
1.6 Aut. (AE111_, AE111R) (4A-FE)	05/99-, vehicles with ABS	Gasolina	FWD	1587	79	107	05.97-02.00	■
1.6 (AE111_) (4A-FE)	05/99-, vehicles with ABS	Gasolina	FWD	1587	81	110	05.97-02.00	■
1.6 (ZZE112_, ZZE112R) (3ZZ-FE)	vehicles with ABS	Gasolina	FWD	1598	81	110	10.99-10.01	■
2.0 D-4D (CDE110_, CDE110R) (1CD-FTV)	vehicles with ABS	Diesel	FWD	1995	66	90	09.00-01.02	■
2.0 D-4D		Diesel	RWD	1995	81	110	08.00-10.01	■
2.2 TD	vehicles with ABS	Diesel	RWD	2184	66	90	04.98-10.01	■

LISTA DE APLICACIONES - BUYERS GUIDE

COROLLA X / ALTIS (_E15_, _E14_) 10.06-					Saloon (Compact executive car-D Segment)			
1.8 VVTi (ZZE142) (1ZZ-FE)	Gasolina	FWD	1794		101	137	10.06-06.10	■
PRIUS (_W1_) 12.97-08.00					Saloon (Compact car-C Segment)			
1.5 Hybrid (NHW10) (1NZ-FXE)	Gasol./el éc.	FWD	1497		43	58	12.97-08.00	■
1.5 Hybrid (NHW11)	Gasol./el éc.	FWD	1497		85	116	09.00-12.03	■