

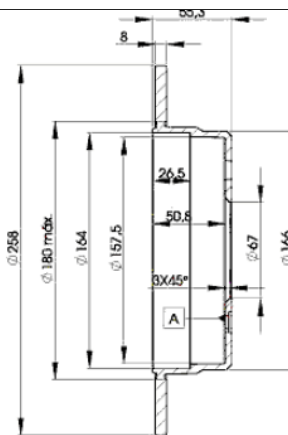
# LISTA DE APLICACIONES - BUYERS GUIDE

## 78BD2113-2



Weight: 6.220

O.E.M.	MAKE
168 423 02 12	MERCEDES-BENZ



## 78BD2113-2

E1 90R-02C0453/0107



Ø258x8x55

**MAKE**  
MERCEDES-BENZ



Trac.	CC	Kw	CV
-------	----	----	----



Front / Rear

### MERCEDES-BENZ

#### A-Class (W168) 07.97-08.05

#### Hatchback (Compact car-C Segment)

A 160 (168.033, 168.133) (M 166.960)	Long Wheelbase	Gasolina	FWD	1598	75	102	07.97-08.04	■
A 190 (168.032, 168.132) (M 166.990)		Gasolina	FWD	1898	92	125	03.99-08.04	■
A 38 AMG Twin Engine (168.032)		Gasolina	FWD	1898	184	250	04.99-02.01	■
A 210 (168.035, 168.135) (M 166.995)		Gasolina	FWD	2084	103	140	12.01-08.04	■
A 170 CDI (168.008) (OM 668.940)	Long Wheelbase	Diesel	FWD	1689	66	90	07.98-02.01	■
A 170 CDI (168.009, 168.109) (OM 668.942)		Diesel	FWD	1689	70	95	02.01-08.04	■

#### VANEO (414) 02.02-07.05

#### MPV (Large MPV-M1 Segment)

1.4		Gasolina	FWD	1397	60	82	06.02-07.05	■
1.6 (414.700) (M 166.961)		Gasolina	FWD	1598	60	82	02.02-07.05	■
1.6 (414.700) (M 166.961)		Gasolina	FWD	1598	75	102	02.02-07.05	■
1.9 (414.700) (M 166.991)		Gasolina	FWD	1898	92	125	02.02-07.05	■
1.7 CDI (414.700) (OM 668.914)		Diesel	FWD	1689	55	75	02.02-07.05	■
1.7 CDI (414.700) (OM 668.914)		Diesel	FWD	1689	67	91	02.02-07.05	■