

# LISTA DE APLICACIONES - BUYERS GUIDE

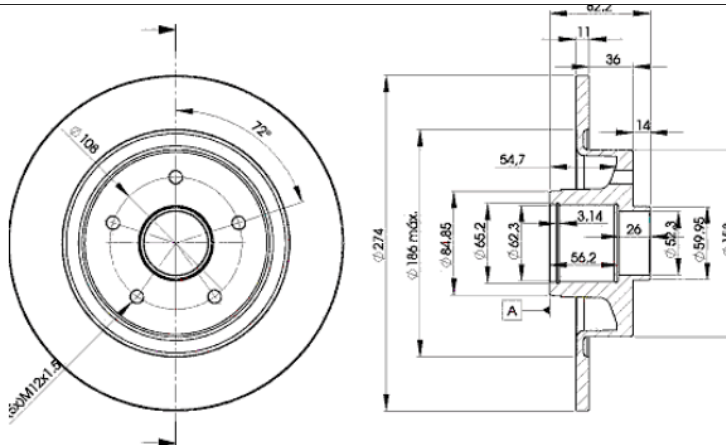
## 78BD2236-1



8 424073 143778

Weight: 7.534

O.E.M.	MAKE
77 01 472 838	RENAULT
77 01 713 008	RENAULT
82 00 367 094	RENAULT



## 78BD2236-1

E1 90R-02C0559/0094



Ø274x11x82

MAKE
RENAULT
TOYOTA



Trac.	CC	Kw	CV	
				Front / Rear

### RENAULT

#### LAGUNA I (B56\_, 556\_) 11.93-08.02

#### Hatchback (Large family car-D Segment)

1.6 16V (B568, B561) (K4M 720)	Gasolina	FWD	1598	79	107	11.97-03.01	■
1.6 16V (B568, B561) (K4M 724)	Gasolina	FWD	1598	79	107	11.97-03.01	■
1.8 16V (B563, B564) (F4P 760)	Gasolina	FWD	1783	88	120	04.98-03.01	■
1.8 16V (B563, B564) (F4P 770)	Gasolina	FWD	1783	88	120	04.98-03.01	■
1.8 (B56A/B) (F3P 720)	Gasolina	FWD	1794	66	90	11.93-03.01	■
1.8 (B56A/B) (F3P 724)	Gasolina	FWD	1794	66	90	11.93-03.01	■
1.8 (B56S/T/0) (F3P 670)	Gasolina	FWD	1794	66	90	08.95-03.01	■
1.8 (B56S/T/0) (F3P 678)	Gasolina	FWD	1794	66	90	08.95-03.01	■
1.8 (F3P 674)	Gasolina	FWD	1794	69	94	06.95-02.01	■
1.8 (B56Z) (F3P 720)	Gasolina	FWD	1794	69	94	08.95-03.01	■
1.8 (B56Z) (F3P 724)	Gasolina	FWD	1794	69	94	08.95-03.01	■
3.0 24V (B56V) (L7X 700)	Gasolina	FWD	2946	140	190	03.97-03.01	■
3.0 24V (B56V) (L7X 701)	Gasolina	FWD	2946	140	190	03.97-03.01	■

#### LAGUNA I Grandtour (K56\_) 09.95-08.02

#### Estate (Large family car-D Segment)

1.6 16V (K568) (K4M 720)	Gasolina	FWD	1598	79	107	11.97-03.01	■
1.6 16V (K568) (K4M 724)	Gasolina	FWD	1598	79	107	11.97-03.01	■
1.8 16V (K563, K564) (F4P 760)	Gasolina	FWD	1783	88	120	04.98-03.01	■
1.8 (K56S/T/0) (F3P 670)	Gasolina	FWD	1794	66	90	09.95-03.01	■
1.8 (K56S/T/0) (F3P 678)	Gasolina	FWD	1794	66	90	09.95-03.01	■
1.8 (K56Z) (F3P 678)	Gasolina	FWD	1794	69	94	09.95-03.01	■
1.8 (K56Z) (F3P 720)	Gasolina	FWD	1794	69	94	09.95-03.01	■
1.8 (K56Z) (F3P 724)	Gasolina	FWD	1794	69	94	09.95-03.01	■

# LISTA DE APLICACIONES - BUYERS GUIDE

2.0 16V (K56D, K56M) (N7Q 700)	Gasolina	FWD	1948	102	139	09.95-03.01	■
2.0 16V (K56D, K56M) (N7Q 704)	Gasolina	FWD	1948	102	139	09.95-03.01	■
2.0 16V (A56A/B) (F4R 780)	Gasolina	FWD	1998	103	140	09.99-03.01	■
<b>LAGUNA II (BG0/1_) 03.01-</b>				<b>Hatchback (Large family car-D Segment)</b>			
1.6 (K4M 710)	Gasolina	FWD	1598	76	103	03.01-05.05	■
1.6 16V (BG0A, BG0L) (K4M 710)	Gasolina	FWD	1598	79	107	03.01-05.05	■
1.6 16V (BG0A, BG0L) (K4M 714)	Gasolina	FWD	1598	79	107	03.01-05.05	■
1.6 16V (BG1G, BG1H) (K4M 716)	Gasolina	FWD	1598	82	112	02.05-08.07	■
1.8 16V (BG06, BG0J, BG0M) (F4P 770)	Gasolina	FWD	1783	85	116	03.01-12.07	■
1.8 16V (BG06, BG0J, BG0M) (F4P 771)	Gasolina	FWD	1783	85	116	03.01-12.07	■
1.8 16V (BG06, BG0J, BG0M) (F4P 773)	Gasolina	FWD	1783	85	116	03.01-12.07	■
1.8 16V (BG06, BG0J, BG0M) (F4P 774)	Gasolina	FWD	1783	85	116	03.01-12.07	■
1.8 16V (BG06, BG0J, BG0M) (F4P 775)	Gasolina	FWD	1783	85	116	03.01-12.07	■
1.8 16V (BG04, BG0B, BG0C, BG0V) (F4P 770)	Gasolina	FWD	1783	86	117	03.01-05.05	■
1.8 16V (BG04, BG0B, BG0C, BG0V) (F4P 774)	Gasolina	FWD	1783	86	117	03.01-05.05	■
1.8 16V (BG0B, BG0M) (F4P 770)	Gasolina	FWD	1783	88	120	03.01-09.07	■
1.8 16V (BG0B, BG0M) (F4P 773)	Gasolina	FWD	1783	88	120	03.01-09.07	■
1.8 16V (BG0B, BG0C, BG0J, BG0M, BG0V) (F4P 770)	Gasolina	FWD	1783	89	121	03.01-05.05	■
1.8 16V (BG0B, BG0C, BG0J, BG0M, BG0V) (F4P 772)	Gasolina	FWD	1783	89	121	03.01-05.05	■
2.0 16V (BG00, BG0W, BG0K, BG0P) (F4R 712)	Gasolina	FWD	1998	98	133	08.02-12.06	■
2.0 16V (BG00, BG0W, BG0K, BG0P) (F4R 713)	Gasolina	FWD	1998	98	133	08.02-12.06	■
2.0 16V (BG00, BG0W, BG0K, BG0P) (F4R 714)	Gasolina	FWD	1998	98	133	08.02-12.06	■
2.0 16V (BG00, BG0W, BG0K, BG0P) (F4R 715)	Gasolina	FWD	1998	98	133	08.02-12.06	■
2.0 16V (BG00, BG0K, BG0P, BG0W) (F4R 712)	Gasolina	FWD	1998	99	135	08.02-12.07	■
2.0 16V (BG00, BG0K, BG0P, BG0W) (F4R 713)	Gasolina	FWD	1998	99	135	08.02-12.07	■
2.0 16V (BG00, BG0K, BG0P, BG0W) (F4R 714)	Gasolina	FWD	1998	99	135	08.02-12.07	■
2.0 16V (BG00, BG0K, BG0P, BG0W) (F4R 715)	Gasolina	FWD	1998	99	135	08.02-12.07	■
2.0 16V IDE (BG0N) (F5R 700)	Gasolina	FWD	1998	103	140	04.01-09.07	■
2.0 16V IDE (BG0N) (F5R 701)	Gasolina	FWD	1998	103	140	04.01-09.07	■
2.0 16V Turbo (BG0S, BG1L, BG1M) (F4R 764)	Gasolina	FWD	1998	120	163	01.03-03.05	■
2.0 16V Turbo (BG0S, BG1L, BG1M) (F4R 765)	Gasolina	FWD	1998	120	163	01.03-03.05	■
2.0 16V (BG03, BG0Z, BG0T, BG1Y) (F4R 784)	Gasolina	FWD	1998	125	170	01.05-09.07	■
2.0 16V (BG03, BG0Z, BG0T, BG1Y) (F4R 786)	Gasolina	FWD	1998	125	170	01.05-09.07	■
2.0 16V (BG03, BG0Z, BG0T, BG1Y) (F4R 787)	Gasolina	FWD	1998	125	170	01.05-09.07	■
2.0 16V (BG1Y) (F4R 886)	Gasolina	FWD	1998	150	204	01.05-09.07	■
2.0 16V (BG1Y) (F4R 887)	Gasolina	FWD	1998	150	204	01.05-09.07	■
3.0 V6 24V (BG01, BG02, BG0D, BG0Y) (L7X 731)	Gasolina	FWD	2946	152	207	03.01-08.07	■
2.9 V6 24V	Gasolina	FWD	2946	155	211	03.01-08.07	■
2.9 V6 24V	Gasolina	FWD	2946	157	210	09.02-12.05	■
1.6 LPG (K4M 714)	Gasol./Gas (LPG)	FWD	1598	79	107	03.01-05.05	■
1.9 dCi (BG05) (F9Q 664)	Diesel	FWD	1870	68	92	03.04-05.05	■
1.9 dCi (BG0R, BG0E) (F9Q 754)	Diesel	FWD	1870	74	100	10.01-05.05	■
1.9 dCi (BG0E) (F9Q 752)	Diesel	FWD	1870	77	105	06.01-05.05	■

# LISTA DE APLICACIONES - BUYERS GUIDE

1.9 dCi (F9Q 718)	Diesel	FWD	1870	79	107	03.01-09.07	■
1.9 dCi (F9Q 754)	Diesel	FWD	1870	79	107	03.01-09.07	■
1.9 dCi (BG1A, BG1W, BG0G) (F9Q 674)	Diesel	FWD	1870	81	110	01.05-08.07	■
1.9 dCi (BG1A, BG1W, BG0G) (F9Q 758)	Diesel	FWD	1870	81	110	01.05-08.07	■
1.9 dCi (BG12) (F9Q 750)	Diesel	FWD	1870	85	116	09.05-12.07	■
1.9 dCi (BG12) (F9Q 758)	Diesel	FWD	1870	85	116	09.05-12.07	■
1.9 dCi (BG12) (F9Q 759)	Diesel	FWD	1870	85	116	09.05-12.07	■
1.9 dCi (BG08, BG0G) (F9Q 650)	Diesel	FWD	1870	88	120	03.01-09.07	■
1.9 dCi (BG08, BG0G) (F9Q 670)	Diesel	FWD	1870	88	120	03.01-09.07	■
1.9 dCi (BG08, BG0G) (F9Q 674)	Diesel	FWD	1870	88	120	03.01-09.07	■
1.9 dCi (BG08, BG0G) (F9Q 750)	Diesel	FWD	1870	88	120	03.01-09.07	■
1.9 dCi (F9Q 750)	Diesel	FWD	1870	92	125	09.05-12.07	■
1.9 dCi (BG1A, BG1V) (F9Q 758)	Diesel	FWD	1870	96	130	05.05-08.07	■
1.9 dCi (BG1A, BG1V) (F9Q 759)	Diesel	FWD	1870	96	130	05.05-08.07	■
2.0 dCi (BG1T) (M9R 740)	Diesel	FWD	1995	110	150	08.05-08.06	■
2.0 dCi (BG14, BG1S) (M9R 760)	Diesel	FWD	1995	127	173	01.06-08.07	■
2.2 dCi (G9T 600)	Diesel	FWD	2188	102	140	05.05-08.07	■
2.2 dCi (G9T 605)	Diesel	FWD	2188	102	140	05.05-08.07	■
2.2 dCi (G9T 706)	Diesel	FWD	2188	102	140	05.05-08.07	■
2.2 dCi (G9T 707)	Diesel	FWD	2188	102	140	05.05-08.07	■
2.2 dCi (BG0F) (G9T 700)	Diesel	FWD	2188	110	150	10.01-08.06	■
2.2 dCi (BG0F) (G9T 702)	Diesel	FWD	2188	110	150	10.01-08.06	■
<b>LAGUNA II Grandtour (KG0/1_) 03.01-</b>					<b>Estate (Large family car-D Segment)</b>		
1.6 (K4M 710)	Gasolina	FWD	1598	76	103	03.01-10.05	■
1.6 16V (KG0A, KG0L) (K4M 710)	Gasolina	FWD	1598	79	107	03.01-12.07	■
1.6 16V (KG0A, KG0L) (K4M 714)	Gasolina	FWD	1598	79	107	03.01-12.07	■
1.6 16V (K4M 716)	Gasolina	FWD	1598	82	112	02.05-08.07	■
1.8 16V (KG0J) (F4P 770)	Gasolina	FWD	1783	85	116	03.01-05.05	■
1.8 16V (KG0J) (F4P 771)	Gasolina	FWD	1783	85	116	03.01-05.05	■
1.8 16V (KG0J) (F4P 774)	Gasolina	FWD	1783	85	116	03.01-05.05	■
1.8 16V (KG0J) (F4P 775)	Gasolina	FWD	1783	85	116	03.01-05.05	■
1.8 16V (F4P 770)	Gasolina	FWD	1783	86	117	03.01-05.05	■
1.8 16V (F4P 770)	Gasolina	FWD	1783	89	121	03.01-05.05	■
1.8 16V (F4P 774)	Gasolina	FWD	1783	89	121	03.01-05.05	■
2.0 16V (KG00, KG0K, KG0W, KG0P) (F4R 712)	Gasolina	FWD	1998	98	133	10.04-09.07	■
2.0 16V (KG00, KG0K, KG0W, KG0P) (F4R 713)	Gasolina	FWD	1998	98	133	10.04-09.07	■
2.0 16V (KG00, KG0K, KG0W, KG0P) (F4R 714)	Gasolina	FWD	1998	98	133	10.04-09.07	■
2.0 16V (KG00, KG0K, KG0W, KG0P) (F4R 715)	Gasolina	FWD	1998	98	133	10.04-09.07	■
2.0 16V (KG00, KG0K, KG0W, KG0P) (F4R 712)	Gasolina	FWD	1998	99	135	08.02-12.07	■
2.0 16V (KG00, KG0K, KG0W, KG0P) (F4R 713)	Gasolina	FWD	1998	99	135	08.02-12.07	■
2.0 16V (KG00, KG0K, KG0W, KG0P) (F4R 714)	Gasolina	FWD	1998	99	135	08.02-12.07	■
2.0 16V (KG00, KG0K, KG0W, KG0P) (F4R 715)	Gasolina	FWD	1998	99	135	08.02-12.07	■
2.0 16V IDE (KG0N) (F5R 700)	Gasolina	FWD	1998	103	140	04.01-09.07	■
2.0 16V IDE (KG0N) (F5R 701)	Gasolina	FWD	1998	103	140	04.01-09.07	■
2.0 16V Turbo (KG0S, KG1L, KG03) (F4R 764)	Gasolina	FWD	1998	120	163	01.03-08.05	■
2.0 16V Turbo (KG0S, KG1L, KG03) (F4R 765)	Gasolina	FWD	1998	120	163	01.03-08.05	■
2.0 16V (KG03, KG0Z, KG0T, KG1Y) (F4R 784)	Gasolina	FWD	1998	125	170	01.05-09.07	■

# LISTA DE APLICACIONES - BUYERS GUIDE

2.0 16V (KG03, KG0Z, KG0T, KG1Y) (F4R 786)	Gasolina	FWD	1998	125	170	01.05-09.07	■
2.0 16V (KG03, KG0Z, KG0T, KG1Y) (F4R 787)	Gasolina	FWD	1998	125	170	01.05-09.07	■
2.0 16V (KG1Y) (F4R 886)	Gasolina	FWD	1998	150	204	01.05-09.07	■
2.0 16V (KG1Y) (F4R 887)	Gasolina	FWD	1998	150	204	01.05-09.07	■
3.0 V6 24V (KG0D, KG01) (L7X 731)	Gasolina	FWD	2946	152	207	03.01-12.07	■
2.9 V6 24V (L7X 731)	Gasolina	FWD	2946	155	211	10.03-12.07	■
2.9 V6 24V	Gasolina	FWD	2946	157	210	09.02-12.05	■
1.6 BiFuel (K4M 714)	Gasol./Gas (LPG)	FWD	1598	79	107	06.05-12.07	■
1.9 dCi (F9Q 664)	Diesel	FWD	1870	66	90	08.03-09.07	■
1.9 dCi (KG05) (F9Q 664)	Diesel	FWD	1870	68	92	03.04-05.05	■
1.9 dCi (KG0E, KG0R) (F9Q 752)	Diesel	FWD	1870	74	100	10.01-05.05	■
1.9 dCi (KG0E) (F9Q 752)	Diesel	FWD	1870	77	105	06.01-05.05	■
1.9 dCi (F9Q 754)	Diesel	FWD	1870	79	107	03.01-12.07	■
1.9 dCi (KG1A, KG1W, KG0G) (F9Q 674)	Diesel	FWD	1870	81	110	01.05-12.07	■
1.9 dCi (KG1A, KG1W, KG0G) (F9Q 758)	Diesel	FWD	1870	81	110	01.05-12.07	■
1.9 dCi (KG12) (F9Q 758)	Diesel	FWD	1870	85	116	08.05-09.07	■
1.9 dCi (KG12) (F9Q 759)	Diesel	FWD	1870	85	116	08.05-09.07	■
1.9 dCi (KG0G) (F9Q 670)	Diesel	FWD	1870	88	120	03.01-09.07	■
1.9 dCi (KG0G) (F9Q 674)	Diesel	FWD	1870	88	120	03.01-09.07	■
1.9 dCi (KG0G) (F9Q 750)	Diesel	FWD	1870	88	120	03.01-09.07	■
1.9 dCi (F9Q 750)	Diesel	FWD	1870	92	125	09.05-12.07	■
1.9 dCi (KG1V) (F9Q 758)	Diesel	FWD	1870	96	130	05.05-12.07	■
1.9 dCi (KG1V) (F9Q 759)	Diesel	FWD	1870	96	130	05.05-12.07	■
2.0 dCi (KG1T) (M9R 740)	Diesel	FWD	1995	110	150	08.05-08.06	■
2.0 dCi (KG1S) (M9R 760)	Diesel	FWD	1995	127	173	01.06-12.07	■
2.2 dCi (KG09) (G9T 600)	Diesel	FWD	2188	85	116	04.04-10.05	■
2.2 dCi (KG0F, KG1N) (G9T 600)	Diesel	FWD	2188	102	140	05.05-12.07	■
2.2 dCi (KG0F, KG1N) (G9T 706)	Diesel	FWD	2188	102	140	05.05-12.07	■
2.2 dCi (KG0F, KG1N) (G9T 707)	Diesel	FWD	2188	102	140	05.05-12.07	■
2.2 dCi (KG0F) (G9T 702)	Diesel	FWD	2188	110	150	10.01-08.06	■
TOYOTA							
SIENNA II (_L2_) 01.03-12.10					MPV (Large MPV-M1 Segment)		
3.3 (MCL20_, MCL23_, MCL20L, MCL23L) (3MZ-FE)	Gasolina	FWD	3311	169	230	01.03-12.06	■
3.3 4WD (MCL25_, MCL25L) (3MZ-FE)	Gasolina	4WD	3311	169	230	01.03-11.09	■
3.5 (GSL20_) (2GR-FE)	Gasolina	FWD	3456	198	269	10.06-12.10	■
3.5 4WD (GSL25_) (2GR-FE)	Gasolina	4WD	3456	198	269	01.07-03.10	■