

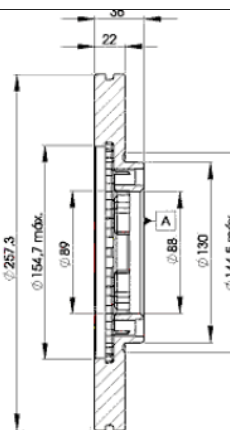
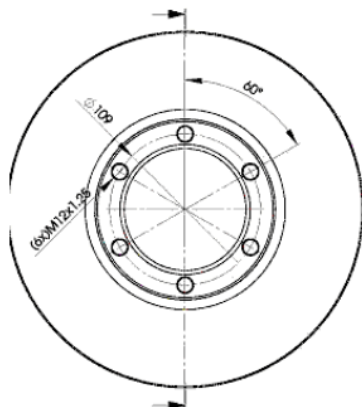
LISTA DE APLICACIONES - BUYERS GUIDE

78BD2376-2



Weight: 10.176

O.E.M.	MAKE
5 69 801	OPEL
5 96 210	OPEL
53707	BEDFORD
89 43 619 270	VAUXHALL
89 436 192 70	OPEL
8-94172-376-1	ISUZU
8943619270	BEDFORD
8-94361-927-0	ISUZU
8-94361-927-1	ISUZU
8-94372-435-0	ISUZU
94 172 376	VAUXHALL
9-41723-76	ISUZU



78BD2376-2

E1 90R-02C0452/0077



Ø257x22x36

MAKE
BEDFORD
ISUZU
OPEL
VAUXHALL



Trac.	CC	Kw	CV		
					Front / Rear

BEDFORD

BRAVA 12.88-07.90

Pickup ()

2.2 D (C223)		Diesel	RWD	2238	39	53	12.88-02.90	■
2.2 D 4WD (C223)		Diesel	4WD	2238	39	53	12.88-02.90	■
2.5 D (4JA1)		Diesel	RWD	2499	56	76	02.90-07.90	■
2.5 D 4WD (4JA1)		Diesel	4WD	2499	56	76	02.90-07.90	■

ISUZU

CAMPO / FASTER (KB) 04.77-12.91

Pickup (Pick-Up Truck)

2.2 (TFS) (4ZD1)		Gasolina	RWD	2254	66	90	01.89-12.90	■
2.2 4WD		Gasolina	4WD	2254	66	90	04.88-12.88	■
2.2 D (KBD27) (C223)		Diesel	RWD	2238	39	53	04.86-12.90	■
2.2 D 4WD (KBD42, KBD47) (C223)		Diesel	4WD	2238	39	53	01.83-12.90	■
2.2 D (KBD27) (C223)		Diesel	RWD	2238	45	61	01.83-12.91	■
2.5 D (KB27) (4JA1)	02/90-	Diesel	RWD	2499	55	75	01.83-12.90	■
2.5 D 4WD (KBD47) (4JA1)	02/90-	Diesel	4WD	2499	55	75	01.83-12.90	■

D-MAX / RODEO (TFR, TFS) 05.02-12.12

Pickup (Pick-Up Truck)

2.5 DiTD (TFR86_, TFR54_) (4JA1-TC)		Diesel	RWD	2499	74	101	10.02-06.12	■
3.0 D 4WD (TFS77H) (4JH1-T)		Diesel	4WD	2999	88	120	06.03-10.04	■
3.0 DiTD 4x4 (TFS77H) (4JH1-TC)		Diesel	4WD	2999	96	131	05.02-06.12	■
3.0 DiTD 4x4		Diesel	4WD	2999	100	136	06.03-12.12	■

GEMINI II (JT) 10.84-12.90

Hatchback (Supermini car-B Segment)

1.5 (4XC1U KAT.)		Gasolina	FWD	1471	52	71	02.88-12.90	■
1.5 (4XC1UT)		Gasolina	FWD	1471	88	120	02.88-06.90	■
1.6 GTI 16V (4XE1)		Gasolina	FWD	1588	84	114	08.88-12.90	■

LISTA DE APLICACIONES - BUYERS GUIDE

1.6 GTI 16V (4XE1)		Gasolina	FWD	1588	92	125	03.88-06.90	■
1.5 D (4EC1)		Diesel	FWD	1488	37	50	02.88-12.90	■
1.5 TD (4EC1T)		Diesel	FWD	1488	49	67	02.88-12.90	■
GEMINI II (JT) 09.84-06.90					Saloon (Supermini car-B Segment)			
1.5 (4XC1U KAT.)		Gasolina	FWD	1471	52	71	02.88-12.89	■
1.6 (4XE1)		Gasolina	FWD	1588	93	126	09.88-12.89	■
1.5 D (4EC1)		Diesel	FWD	1488	37	50	02.88-12.89	■
1.5 TD (4EC1T)		Diesel	FWD	1488	49	67	02.88-12.89	■
GEMINI III 01.90-12.93					Hatchback (Executive car-E Segment)			
1.5 (4XC1)	-12/92	Gasolina	FWD	1471	73	99	01.90-12.93	■
1.6 (4XE1-WU)	-12/92	Gasolina	FWD	1588	97	132	01.90-12.93	■
1.6 (4XE1-WUT)	-12/92	Gasolina	4WD	1588	132	180	01.90-12.93	■
1.8 (4XF1)	-12/92	Gasolina	FWD	1809	105	143	01.90-12.93	■
1.7 TD (4EE1)	-12/92	Diesel	FWD	1686	65	88	01.90-12.93	■
GEMINI III 01.90-12.93					Saloon (Executive car-E Segment)			
1.5 i (4XC1)	-12/92	Gasolina	FWD	1471	73	99	01.90-12.93	■
1.6 i (4XE1-V)		Gasolina	FWD	1588	71	96	01.90-12.93	■
1.6 i (4XE1-WU)	-12/92	Gasolina	FWD	1588	97	132	01.90-12.93	■
1.6 i Turbo (4XE1-WUT)	07/90-	Gasolina	4WD	1588	132	180	01.90-12.93	■
1.8 (4XF1)	-12/92	Gasolina	FWD	1809	105	143	01.90-12.93	■
1.7 TD (4EE1)	-12/92	Diesel	FWD	1686	65	88	01.90-12.93	■
KB III 05.88-08.04					Pickup (Pick-Up Truck)			
2.3 (4ZD1)		Gasolina	RWD	2254	64	87	12.90-09.03	■
2.3 4WD (4ZD1)		Gasolina	4WD	2254	64	87	12.90-04.00	■
2.3 (4ZD1)		Gasolina	RWD	2254	66	90	12.90-10.95	■
2.5 TDI (4JA1T)		Diesel	RWD	2499	66	90	12.90-04.00	■
2.8 TD (4JB1-TC)		Diesel	RWD	2771	78	106	12.90-09.03	■
2.8 TD 4WD (4JB1-TC)		Diesel	4WD	2771	78	106	12.90-04.00	■
3.1 TD (4JG2)		Diesel	RWD	3059	72	98	12.94-04.00	■
3.1 TD 4WD (4JG2)		Diesel	4WD	3059	72	98	12.94-09.03	■
MU / CAMEO (_U_) 02.89-08.02					Closed Off-Road Vehicle (Compact SUV-J Segment)			
3.0 D 4x4 (UES73EW) (4JX1-TC)		Diesel	4WD	2999	107	146	06.98-08.02	■
3.1 TD 4x4 (UCS69)		Diesel	4WD	3059	88	120	08.93-05.98	■
3.2		Diesel	RWD	3165	158	215	06.98-08.02	■
PICK UP (TF) 07.96-					Pickup (Pick-Up Truck)			
2.8 TD (TFR55)		Diesel	RWD	2771	74	101	07.99-08.04	■
TF / SPACECAB 10.97-09.03					Pickup (Pick-Up Truck)			
2.8 TD (4JB1-T)		Diesel	RWD	2771	78	106	05.00-09.03	■
TFR-TFS / KB (TF_) 09.88-12.02					Pickup (Pick-Up Truck)			
2.3 (TFR16H) (4ZD1)		Gasolina	RWD	2254	66	90	10.92-08.93	■
2.3 (F23A7)		Gasolina	RWD	2254	110	150	09.94-08.99	■
2.5 TD 4WD (4JA1T)		Diesel	4WD	2499	86	117	09.88-08.91	■
TROOPER / BIGHORN (UBS) 01.83-12.91					Closed Off-Road Vehicle (Executive SUV-J Segment)			
1.9		Gasolina	RWD	1949	58	79	07.83-10.86	■
2.3 4WD (4ZD1)		Gasolina	4WD	2254	66	90	09.84-12.91	■
2.6 CLS Plane		Gasolina	FWD	2559	66	90	11.86-07.91	■
2.6 4WD (4ZE1)		Gasolina	4WD	2559	85	116	11.86-07.91	■

LISTA DE APLICACIONES - BUYERS GUIDE

2.2 D 4WD (C223)	-07/89	Diesel	4WD	2238	39	53	05.84-12.89	■
2.2 D		Diesel	RWD	2238	45	61	01.83-12.83	■
2.2 TD 4WD		Diesel	4WD	2238	53	72	03.84-12.91	■
2.8 TD (UBS55) (4JB1-T)		Diesel	4WD	2771	71	97	10.87-12.91	■
2.8 TD (4JB1-T)		Diesel	4WD	2771	74	101	10.87-12.91	■
2.8 TD (UBS55) (4JB1-TC)		Diesel	4WD	2771	78	106	10.88-12.91	■
2.8 TD 4WD		Diesel	4WD	2771	81	110	11.86-07.91	■
TROOPER / BIGHORN (UBS) 01.83-12.91					Open Off-Road Vehicle (Executive SUV-J Segment)			
2.0 (UBS13) (G200Z)		Gasolina	RWD	1949	58	79	01.83-12.85	■
2.3 (UBS16) (4ZD1)		Gasolina	4WD	2254	66	90	11.85-12.91	■
2.6 CLS Plane		Gasolina	FWD	2559	66	90	11.86-07.91	■
2.6 i (UBS17) (4ZE1)		Gasolina	4WD	2559	85	116	10.87-12.91	■
2.2 D 4x4 (C223)		Diesel	4WD	2238	39	53	05.84-07.89	■
2.2 D (UBS52) (C223-T)		Diesel	RWD	2238	45	61	01.83-12.83	■
2.2 TD (UBS52) (C223-T)		Diesel	4WD	2238	53	72	03.84-12.91	■
2.8 TD 4x4		Diesel	4WD	2771	81	110	11.86-07.91	■
OPEL								
CAMPO (TF0, TF1) 08.87-06.02					Pickup (Pick-Up Truck)			
2.3 (TFR16) (4 ZD1)		Gasolina	RWD	2254	69	94	08.91-08.94	■
2.3 4x4 (TFS16) (4 ZD1)		Gasolina	4WD	2254	69	94	08.91-08.94	■
2.3 (TFR16) (4 ZD1)		Gasolina	RWD	2254	72	98	08.94-09.96	■
2.3 4x4 (TFS16) (4 ZD1)		Gasolina	4WD	2254	72	98	08.94-09.96	■
2.2 D (4FD1)		Diesel	RWD	2189	45	61	09.90-08.92	■
2.2 D 4x4 (4FD1)		Diesel	4WD	2189	45	61	09.90-08.92	■
2.2 D (TFR52)		Diesel	RWD	2238	39	53	08.91-09.96	■
2.2 D 4x4 (TFS52)		Diesel	4WD	2238	39	53	08.91-09.96	■
2.2 D (TFR52) (C223)		Diesel	RWD	2238	45	61	08.87-08.90	■
2.2 D 4x4 (TFS52) (C223)		Diesel	4WD	2238	45	61	08.87-08.90	■
2.5 D (TFR54) (4JA1)		Diesel	RWD	2499	56	76	08.91-06.94	■
2.5 D 4x4 (TFS54) (4JA1)		Diesel	4WD	2499	56	76	08.91-06.94	■
2.5 TD (TFR54) (4JA1-T)		Diesel	RWD	2499	56	76	07.94-06.01	■
2.5 TD 4x4 (TFS54) (4JA1-T)		Diesel	4WD	2499	56	76	07.94-06.01	■
2.5 DTi (4JA1-TC)		Diesel	RWD	2499	74	101	07.01-12.01	■
2.5 DTi 4x4 (4JA1-TC)		Diesel	4WD	2499	74	101	07.01-12.01	■
3.1 TD (TFR69) (4 JG2T)		Diesel	RWD	3059	80	109	12.92-06.01	■
3.1 TD 4x4 (TFS69) (4 JG2T)		Diesel	4WD	3059	80	109	12.92-06.01	■
FRONTERA A Sport (U92) 03.92-10.98					Open Off-Road Vehicle (Compact SUV-J Segment)			
2.0 i (52SUD2, 55SUD2) (C 20 NE)	-03/95	Gasolina	4WD	1998	85	115	03.92-10.98	■
2.0 i (52SUD2, 55SUD2) (X 20 SE)	-03/95	Gasolina	4WD	1998	85	115	03.92-10.98	■
VAUXHALL								
BRAVA (TF0, TF1) 12.88-12.02					Pickup (Pick-Up Truck)			
2.3 (TFR16) (4 ZD1)		Gasolina	RWD	2254	69	94	08.91-08.94	■
2.3 4x4 (TFS16) (4 ZD1)		Gasolina	4WD	2254	69	94	06.90-08.94	■
2.3 (TFR16) (23 P)		Gasolina	RWD	2254	72	98	08.94-09.96	■
2.3 4x4 (TFS16) (23 P)		Gasolina	4WD	2254	72	98	08.94-09.96	■
2.2 D		Diesel	RWD	2189	45	61	07.90-09.92	■
2.2 D (TFR52)		Diesel	RWD	2238	39	53	12.88-09.96	■
2.2 D 4x4 (TFS52)		Diesel	4WD	2238	39	53	12.88-09.96	■
2.5 TD (TFR54) (4JA1-T)		Diesel	RWD	2499	56	76	08.91-06.94	■

LISTA DE APLICACIONES - BUYERS GUIDE

2.5 TD (TFR54) (4JA1-T)	-07/01	Diesel	RWD	2499	56	76	07.94-12.02	■
2.5 TD 4x4 (TFS54) (4JA1-T)		Diesel	4WD	2499	56	76	06.90-06.94	■
2.5 TD 4x4 (TFS54) (4JA1-T)	-07/01	Diesel	4WD	2499	56	76	07.94-12.02	■
2.5 DTi (4JA1-T)		Diesel	RWD	2499	74	101	08.01-12.02	■
2.5 DTi 4x4 (4JA1-T)		Diesel	4WD	2499	74	101	08.01-12.02	■
3.1 D		Diesel	RWD	3059	80	108	07.91-07.01	■
FRONTERA Mk I (A) (U92) 09.91-10.98					Closed Off-Road Vehicle (Compact SUV-J Segment)			
2.4 i (C 24 NE)	-03/95	Gasolina	4WD	2410	92	125	03.92-10.98	■
2.3 TD (23 DTR)	-03/95	Diesel	4WD	2260	74	100	09.91-06.98	■
FRONTERA Mk I (A) Sport (U92) 03.92-10.98					Open Off-Road Vehicle (Compact SUV-J Segment)			
2.0 i (C 20 NE)	-03/95	Gasolina	4WD	1998	85	115	03.92-10.98	■
2.0 i (X 20 SE)	-03/95	Gasolina	4WD	1998	85	115	03.92-10.98	■