

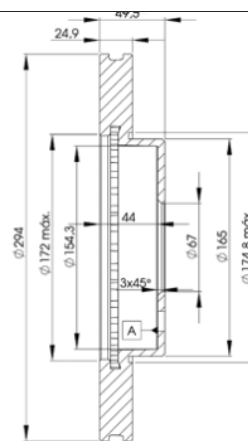
LISTA DE APLICACIONES - BUYERS GUIDE

78BD2412-2



Weight: 14.930

O.E.M.	MAKE
124 421 2412	MERCEDES-BENZ



78BD2412-2



(E1) 90R-02C0074/0090

Ø294x25x49.4

MAKE
MERCEDES-BENZ



Trac.	CC	Kw	CV
-------	----	----	----



Front / Rear

MERCEDES-BENZ

124 (A124) 09.91-06.93					Convertible (Executive car-E Segment)			
320 CE (124.066) (M 104.992)	Gasolina	RWD	3199	162	220	10.92-05.93	■	
124 (W124) 12.84-08.93					Saloon (Executive car-E Segment)			
400 E 4.2 (124.034) (M 119.975)	Gasolina	RWD	4196	205	279	10.92-06.93	■	
E-Class (A124) 05.93-03.98					Convertible (Executive car-E Segment)			
E 320 (124.066) (M 104.992)	Gasolina	RWD	3199	162	220	06.93-03.98	■	
E 36 AMG (124.066) (M 104.992 (AMG 3.6))	Gasolina	RWD	3606	200	272	05.94-03.98	■	
E-Class (C124) 06.93-06.97					Coupe (Executive car-E Segment)			
E 320 (124.052) (M 104.992)	Gasolina	RWD	3199	162	220	06.93-06.97	■	
E 36 AMG (124.052)	Gasolina	RWD	3606	195	265	06.93-04.95	■	
E 36 AMG (124.052) (M 104.992 (AMG 3.6))	Gasolina	RWD	3606	200	272	05.94-06.97	■	
E-Class (W124) 02.93-06.96					Saloon (Executive car-E Segment)			
E 320 (124.032) (M 104.992)	Gasolina	RWD	3199	162	220	06.93-06.95	■	
E 36 AMG (M 104.992 (AMG 3.6))	Gasolina	RWD	3606	200	272	07.94-01.95	■	
E 420 (124.034) (M 119.975)	Gasolina	RWD	4196	205	279	06.93-06.95	■	
E-Class T-Model (S124) 06.93-06.96					Estate (Executive car-E Segment)			
E 320 T (124.092) (M 104.992)	Gasolina	RWD	3199	162	220	06.93-06.96	■	
E 36 T AMG (124.092) (M 104.992 (AMG 3.6))	Gasolina	RWD	3606	200	272	05.94-06.96	■	