

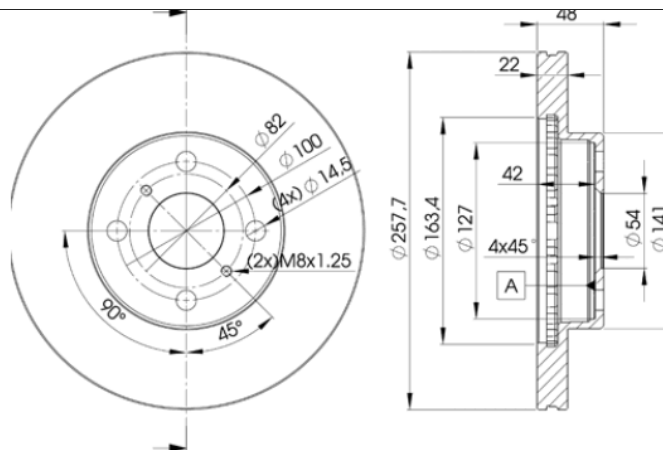
LISTA DE APLICACIONES - BUYERS GUIDE

78BD2490-2



Weight: 10.310

| O.E.M. | MAKE |
|-------------|--------|
| 4351201020 | TOYOTA |
| 4351212260 | TOYOTA |
| 4351212270 | TOYOTA |
| 4351212310 | TOYOTA |
| 4351212460 | TOYOTA |
| 43512-12490 | TOYOTA |
| 4351212510 | TOYOTA |
| 4351213010 | TOYOTA |
| 4351220240 | TOYOTA |
| 4351220310 | TOYOTA |



78BD2490-2

E1 90R-02C0074/0061



Ø257.7x22x48

| MAKE |
|--------|
| TOYOTA |



| | | | | | | |
|-------|----|----|----|--|--|--------------|
| Trac. | CC | Kw | CV | | | Front / Rear |
|-------|----|----|----|--|--|--------------|

TOYOTA

| COROLLA VI LEVIN (E9_) 05.89-05.91 | | | | | | | Coupe (Compact executive car-D Segment) | | |
|--------------------------------------|--|----------|-----|------|----|-----|---|---|--|
| 1.5 (AE91) (5A-FE) | | Gasolina | FWD | 1498 | 69 | 94 | 05.89-05.91 | ■ | |
| COROLLA VI (E9_) 05.87-04.97 | | | | | | | Hatchback (Compact executive car-D Segment) | | |
| 1.6 (AE92) (4A-F) | | Gasolina | FWD | 1587 | 66 | 90 | 08.87-04.92 | ■ | |
| 1.6 (AE92) (4A-F) | | Gasolina | FWD | 1587 | 70 | 95 | 08.87-04.92 | ■ | |
| 1.6 (AE92) (4A-FE) | | Gasolina | FWD | 1587 | 77 | 105 | 08.89-04.92 | ■ | |
| 1.6 GTi (AE92_, AE92R) (4A-GE) | | Gasolina | FWD | 1587 | 92 | 125 | 07.87-06.93 | ■ | |
| COROLLA VI (E9_) 05.87-09.99 | | | | | | | Saloon (Compact executive car-D Segment) | | |
| 1.5 (AE91) (5A-FE) | | Gasolina | FWD | 1496 | 92 | 125 | 11.89-04.92 | ■ | |
| 1.5 (AE91, EE90) (5A-FE) | | Gasolina | FWD | 1498 | 69 | 94 | 05.88-06.91 | ■ | |
| 1.6 GL 4WD (AE95) (4A-F) | | Gasolina | 4WD | 1587 | 70 | 95 | 10.87-08.90 | ■ | |
| 1.6 i (AE92) (4A-FE) | | Gasolina | FWD | 1587 | 77 | 105 | 05.87-05.92 | ■ | |
| 1.6 i 4WD (AE92_, AE92R) (4A-FE) | | Gasolina | 4WD | 1587 | 77 | 105 | 10.87-08.90 | ■ | |
| 1.6 (AE92) (4A-GE) | | Gasolina | FWD | 1587 | 85 | 116 | 05.87-04.94 | ■ | |
| COROLLA VI Compact (E9_) 05.87-10.95 | | | | | | | Hatchback (Compact executive car-D Segment) | | |
| 1.3 (EE90) (2E) | | Gasolina | FWD | 1296 | 55 | 75 | 08.87-04.92 | ■ | |
| 1.3 (EE90) (2E-E) | | Gasolina | FWD | 1296 | 55 | 75 | 08.87-04.92 | ■ | |
| 1.6 (AE92) (4A-F) | | Gasolina | FWD | 1587 | 66 | 90 | 08.87-04.92 | ■ | |
| 1.6 (AE92) (4A-F) | | Gasolina | FWD | 1587 | 70 | 95 | 09.89-04.92 | ■ | |
| 1.6 i (AE92) (4A-FE) | | Gasolina | FWD | 1587 | 77 | 105 | 08.89-04.92 | ■ | |
| 1.6 GTi (AE92, AE93) (4A-GE) | | Gasolina | FWD | 1587 | 85 | 116 | 08.87-10.94 | ■ | |

LISTA DE APLICACIONES - BUYERS GUIDE

| COROLLA VI Station Wagon (_E9_) 05.87-10.95 | | | | | Estate (Compact executive car-D Segment) | | | |
|--|----------|-----|------|----|---|-------------|---|--|
| 1.3 (EE90_, EE90R) (2E) | Gasolina | FWD | 1295 | 60 | 81 | 05.87-04.92 | ■ | |
| 1.6 (AE92) (4A-F) | Gasolina | FWD | 1587 | 66 | 90 | 02.88-05.92 | ■ | |
| 1.6 (AE92) (4A-F) | Gasolina | FWD | 1587 | 70 | 95 | 05.87-04.92 | ■ | |
| 1.6 4WD (AE95) (4A-FE) | Gasolina | 4WD | 1587 | 77 | 105 | 04.88-10.95 | ■ | |
| 1.6 XLI (AE92_, AE92R) (4A-FE) | Gasolina | FWD | 1587 | 77 | 105 | 11.89-06.92 | ■ | |
| 1.6 XLI 4WD (4A-FE) | Gasolina | 4WD | 1587 | 81 | 110 | 08.89-07.95 | ■ | |
| CORONA IX (_T17_) 11.87-09.93 | | | | | Saloon (Large family car-D Segment) | | | |
| 1.5 (AT170_, AT170) (5A-F) | Gasolina | FWD | 1498 | 85 | 116 | 11.87-08.89 | ■ | |
| 1.5 (AT170_, AT170) (5A-FE) | Gasolina | FWD | 1498 | 92 | 125 | 11.87-08.89 | ■ | |
| 1.8 (ST180_, ST181_, ST180, ST181) (4S-FE) | Gasolina | FWD | 1838 | 85 | 116 | 11.89-02.92 | ■ | |
| 2.0 D (CT170) (2C) | Diesel | FWD | 1974 | 54 | 73 | 12.87-01.92 | ■ | |
| CORONA VIII EX (_T18_) 08.86-09.93 | | | | | Saloon (Large family car-D Segment) | | | |
| 1.8 (ST180_, ST181_, ST180, ST181) (4S-FE) | Gasolina | FWD | 1838 | 85 | 116 | 11.89-02.92 | ■ | |
| CORONA X (_T19_) 02.92-09.97 | | | | | Hatchback (Large family car-D Segment) | | | |
| 1.8 (ST190) (4S-FE) | Gasolina | FWD | 1838 | 92 | 125 | 02.92-01.96 | ■ | |