

LISTA DE APLICACIONES - BUYERS GUIDE

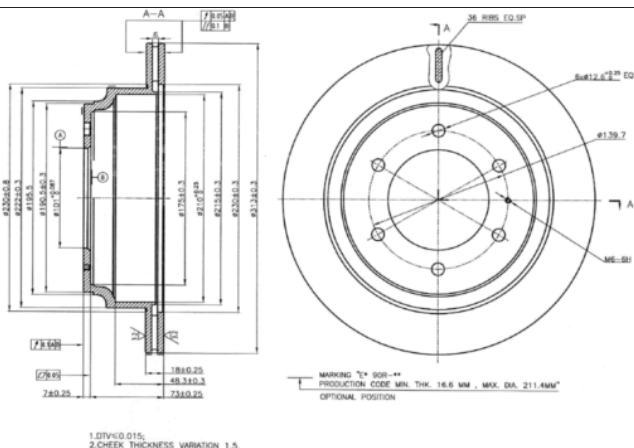
78BD2547-2



8 424073 193322

Weight: 14.216

O.E.M.	MAKE
569104	OPEL
569106	OPEL
8943754251	ISUZU
8970340361	ISUZU
8970460810	ISUZU
8970460811	ISUZU
91151563	OPEL
94375425	OPEL
97034036	OPEL



78BD2547-2

E1 90R-02C0656/0121



Ø313x18x80

MAKE
ACURA
CHEVROLET
GREAT WALL
HOLDEN
ISUZU
OPEL
VAUXHALL



Trac.	CC	Kw	CV
-------	----	----	----



Front / Rear

ACURA

SLX 11.95-09.99					Closed Off-Road Vehicle (Executive SUV-J Segment)			
3.2 4WD (6VD1 (DOHC))	Gasolina	4WD	3165	140	190	11.95-09.99	■	
3.5	Gasolina	FWD	3474	151	205	11.97-09.99	■	

CHEVROLET

TROOPER II 03.93-12.02					Closed Off-Road Vehicle (Executive SUV-J Segment)			
3.2		Gasolina	FWD	3165	143	195	03.93-12.02	■
3.2		Gasolina	FWD	3165	149	202	03.98-12.02	■

GREAT WALL

HOVER 06.04-12.10					Closed Off-Road Vehicle (Compact SUV-J Segment)			
2.8 TCi	Diesel	RWD	2771	70	95	10.08-12.10	■	
HOVER / X240 11.05-04.11					SUV (Compact SUV-J Segment)			
2.0	Gasolina	FWD	1997	90	122	10.08-12.10	■	
2.2	Gasolina	FWD	2237	78	106	06.06-12.07	■	
2.2	Gasolina	FWD	2237	78	106	06.06-12.07	■	
2.4 (4G64)	Gasolina	RWD	2350	93	125	11.05-10.08	■	
2.4 A las 4 ruedas (4G64)	Gasolina	4WD	2350	93	125	11.05-10.08	■	
2.4	Gasolina	FWD	2378	100	136	01.08-	■	
2.4	Gasolina	FWD	2378	100	136	01.08-	■	
2.4 TCI	Diesel	RWD	2499	80	109	01.08-	■	
2.4 TCI	Diesel	RWD	2499	80	109	01.08-	■	
2.8 TCi 4WD (GW28TC2)	Diesel	4WD	2771	70	95	10.06-12.10	■	

LISTA DE APLICACIONES - BUYERS GUIDE

HOVER H3 / HAVAL H3 09.06-					SUV (Compact SUV-J Segment)			
2.0 (4G63-S4M)		Gasolina	RWD	1997	90	122	05.09-	■
2.0 4WD (4G63-S4M)		Gasolina	4WD	1997	90	122	01.10-	■
2.4		Gasolina	FWD	2378	100	136	07.10-12.13	■
2.4 A las 4 ruedas (4G69-S4N)		Gasolina	4WD	2378	100	136	07.10-12.13	■
2.5 TCI		Diesel	RWD	2499	80	109	01.10-	■
2.5 TCI		Diesel	RWD	2499	80	109	01.10-	■
2.8 TD 4WD (GW2.8TCI)		Diesel	4WD	2771	85	116	10.08-12.10	■
HOVER H5 / HAVAL 5 06.10-					SUV (Compact SUV-J Segment)			
2.0		Gasolina	FWD	1997	90	122	08.10-	■
2.4 (4G69-S4N)		Gasolina	RWD	2378	100	136	06.10-	■
2.4 4x4 (CC6461) (4G69-S4N)		Gasolina	4WD	2378	100	136	06.10-	■
2.0 TD (GW4D20)		Diesel	RWD	1996	110	150	10.10-12.14	■
2.0 TD 4WD (GW4D20)		Diesel	4WD	1996	110	150	10.10-12.14	■
2.5 TCI		Diesel	RWD	2499	80	109	06.10-12.13	■
2.5 TCI A las 4 ruedas		Diesel	4WD	2499	80	109	06.10-12.11	■
HOLDEN								
FRONTERA (UES) 02.99-04.04					Closed Off-Road Vehicle (Compact SUV-J Segment)			
2.0 i 4x4		Gasolina	4WD	1998	85	115	10.95-03.99	■
2.2 i 4x4		Gasolina	4WD	2198	96	131	02.99-07.02	■
3.2 i 4x4		Gasolina	4WD	3165	151	205	08.98-04.04	■
JACKAROO / MONTEREY (UBS) 10.91-09.04					Closed Off-Road Vehicle (Executive SUV-J Segment)			
3.2 i		Gasolina	FWD	3165	130	177	04.92-02.98	■
3.5 RS		Gasolina	FWD	3494	158	215	03.98-09.04	■
3.0 TD		Diesel	RWD	2999	117	159	03.98-09.04	■
3.1 TD		Diesel	RWD	3059	84	114	04.92-02.98	■
RODEO (TF) 02.88-08.03					Pickup (Pick-Up Truck)			
3.2		Gasolina	FWD	3165	140	190	02.98-02.03	■
3.2 i		Gasolina	FWD	3165	140	190	02.98-02.03	■
3.5 i		Gasolina	FWD	3494	147	200	02.03-12.05	■
3.5 i		Gasolina	FWD	3494	147	200	02.03-12.05	■
3.6 i		Gasolina	FWD	3565	157	214	01.06-06.08	■
3.6 i		Gasolina	FWD	3565	157	214	01.06-06.08	■
ISUZU								
AXIOM SUV 09.01-12.04					SUV (Executive SUV-J Segment)			
3.5		Gasolina	RWD	3494	172	234	09.01-12.03	■
3.5 4WD (6VE1)		Gasolina	4WD	3494	172	234	09.01-12.03	■
3.5		Gasolina	RWD	3494	187	254	09.03-12.04	■
RODEO (U.S.A.) 09.90-12.97					Closed Off-Road Vehicle (Pick-Up Truck)			
2.2 (X 22 SE)		Gasolina	RWD	2198	97	132	09.97-12.03	■
2.2 4WD (X 22 SE)		Gasolina	4WD	2198	97	132	09.97-12.03	■
2.6		Gasolina	RWD	2559	89	121	09.90-12.97	■
2.6 4WD		Gasolina	4WD	2559	89	121	09.90-12.97	■
3.1		Gasolina	RWD	3135	90	122	09.90-12.92	■
3.1 4WD		Gasolina	4WD	3135	90	122	09.90-12.92	■
3.2		Gasolina	RWD	3165	130	177	09.92-12.95	■
3.2 4WD		Gasolina	4WD	3165	130	177	09.92-12.95	■
3.2		Gasolina	RWD	3165	142	193	09.95-12.97	■

LISTA DE APLICACIONES - BUYERS GUIDE

3.2 4WD		Gasolina	4WD	3165	142	193	09.95-12.97	■
3.2 V6		Gasolina	RWD	3165	151	205	09.97-08.04	■
3.2 V6 4WD (6VD1 (DOHC))		Gasolina	4WD	3165	151	205	09.97-08.04	■
3.5		Gasolina	RWD	3494	187	254	09.03-08.04	■
3.5 4WD		Gasolina	4WD	3494	187	254	09.03-08.04	■
2.8 TDI		Diesel	RWD	2771	84	114	09.99-08.04	■
2.8 TDI 4x4		Diesel	4WD	2771	84	114	09.99-08.04	■
TFR-TFS / KB (TF_) 09.88-12.02					Pickup (Pick-Up Truck)			
3.5 (TFR) (6VE1)		Gasolina	RWD	3494	158	215	09.95-12.02	■
3.5 4WD (TFS) (6VE1)		Gasolina	4WD	3494	158	215	09.95-12.02	■
2.5 4WD (TFS54H) (4JA1)		Diesel	4WD	2499	57	77	09.91-12.02	■
3.0 TDi 4WD (TFS)		Diesel	4WD	2999	117	159	09.99-12.02	■
TROOPER II (UB) 08.91-04.00					Closed Off-Road Vehicle (Executive SUV-J Segment)			
2.6 4x4 (4ZE1)		Gasolina	4WD	2559	85	116	08.91-04.96	■
3.2 (6VD1 (SOHC))		Gasolina	4WD	3165	130	177	08.91-07.98	■
3.5 V6 24V AWD (6VE1)		Gasolina	4WD	3494	158	215	04.00-08.04	■
3.5		Gasolina	RWD	3494	160	218	05.98-12.02	■
3.0 DTI (4JX1)		Diesel	4WD	2999	117	159	05.98-08.04	■
3.0 TDI		Diesel	4WD	2999	117	160	10.00-06.02	■
3.1 TD (4JG2 T)		Diesel	4WD	3059	84	114	08.91-07.98	■
TROOPER II (UB) 08.91-07.98					Open Off-Road Vehicle (Executive SUV-J Segment)			
2.6 4x4 (4ZE1)		Gasolina	4WD	2559	85	116	08.91-04.96	■
3.2 (6VD1 (SOHC))		Gasolina	4WD	3165	130	177	08.91-07.98	■
3.5 V6 24V (6VE1)		Gasolina	4WD	3494	158	215	04.00-08.04	■
3.0 DTI (4JX1T)		Diesel	4WD	2999	118	160	04.00-08.04	■
3.1 TD (4JG2 T)		Diesel	4WD	3059	84	114	08.91-07.98	■
VEHICROSS (_U_) 04.97-12.01					SUV (Compact SUV-J Segment)			
3.2 4x4 (UGS25) (6VD1 (DOHC))		Gasolina	4WD	3165	158	215	04.97-12.00	■
WIZARD (_U_) 01.93-12.04					Closed Off-Road Vehicle (Compact SUV-J Segment)			
3.2 4x4 (UES25, UER25FW) (6VD1 (DOHC))		Gasolina	4WD	3165	158	215	06.98-08.02	■
3.0 TD 4x4 (UES73) (4JX1-TC)		Diesel	4WD	2999	107	146	06.98-08.02	■
3.1 TD		Diesel	RWD	3059	88	120	12.95-05.00	■
OPEL								
FRONTERA A (U92) 03.92-10.98					Closed Off-Road Vehicle (Compact SUV-J Segment)			
2.0 i (C 20 NE)	ch- SV720103	Gasolina	4WD	1998	85	115	05.93-08.98	■
2.0 i (X 20 SE)	ch- SV720103	Gasolina	4WD	1998	85	115	05.93-08.98	■
2.2 i (54MWL4) (X 22 XE)	ch- SV720103	Gasolina	4WD	2198	100	136	03.95-10.98	■
2.4 i (53MWL4) (C 24 NE)	ch- SV720103	Gasolina	4WD	2410	92	125	03.92-10.98	■
2.3 TD (5JMWL4) (23 DTR)	ch- SV720103	Diesel	4WD	2260	74	100	03.92-10.98	■
2.5 TDS (25TD)	ch- SV720103	Diesel	4WD	2499	85	115	09.96-10.98	■
2.8 TD (5BMW4, 5BSUD2) (28TD)	ch- SV720103	Diesel	4WD	2771	83	113	03.95-08.98	■
FRONTERA A Sport (U92) 03.92-10.98					Open Off-Road Vehicle (Compact SUV-J Segment)			
2.0 i (52SUD2, 55SUD2) (C 20 NE)	ch- SV720103	Gasolina	4WD	1998	85	115	03.92-10.98	■
2.0 i (52SUD2, 55SUD2) (X 20 SE)	ch- SV720103	Gasolina	4WD	1998	85	115	03.92-10.98	■
2.5 TDS (25TD)	ch- SV720103	Diesel	4WD	2499	85	115	09.96-10.98	■
2.8 TD (5BSUD2) (28TD)	ch- SV720103	Diesel	4WD	2771	83	113	03.95-08.96	■

LISTA DE APLICACIONES - BUYERS GUIDE

FRONTERA B (U99) 09.98-07.04						Closed Off-Road Vehicle (Compact SUV-J Segment)			
2.2 i (6B_ZC, 6B_VF, 6B_66, 6B_76) (X 22 SE)	ch- SV720103	Gasolina	4WD	2198	100	136	10.98-07.04	■	
2.2 i (6B_ZC, 6B_VF, 6B_66, 6B_76) (Y 22 SE)	ch- SV720103	Gasolina	4WD	2198	100	136	10.98-07.04		
3.2 i (6B1VF, 6B1_6) (6VD1 (DOHC))	ch- SV720103	Gasolina	4WD	3165	151	205	10.98-07.04		
3.2 i (6B1VF, 6B1_6) (Y 32 NE)	ch- SV720103	Gasolina	4WD	3165	151	205	10.98-07.04		
2.2 DTI (6B_ZC, 6B_VF, 6B_66, 6B_76) (X 22 DTH)	ch- SV720103	Diesel	4WD	2171	85	116	09.98-12.03		
2.2 DTI (6B_ZC, 6B_VF, 6B_66, 6B_76) (Y 22 DTH)	ch- SV720103	Diesel	4WD	2171	85	116	09.98-12.03		
2.2 DTI (6B_66, 6B_76) (Y 22 DTH)	ch- SV720103	Diesel	4WD	2171	88	120	09.02-07.04		
MONTEREY II (M92) 08.91-07.98						Closed Off-Road Vehicle (Executive SUV-J Segment)			
3.2 (UBS25D, UBS25G) (6VD1 (SOHC))	ch- SV720103	Gasolina	4WD	3165	130	177	08.91-03.94	■	
3.5 V6 24V (UBS26D, UBS26G) (6 VE1)	ch- SV720103	Gasolina	4WD	3494	158	215	07.98-08.99		
3.0 DTI (UBS73D, UBS73G) (4 JX1)	ch- SV720103	Diesel	4WD	2999	117	159	07.98-08.99		
3.1 TD (UBS69D, UBS69G) (4 JG2TC)	ch- SV720103	Diesel	4WD	3059	84	114	09.91-07.98		
VAUXHALL									
FRONTERA Mk I (A) (U92) 09.91-10.98						Closed Off-Road Vehicle (Compact SUV-J Segment)			
2.0 (C 20 NE)	ch- SV720103	Gasolina	4WD	1998	85	115	04.95-08.98	■	
2.0 (X 20 SE)	ch- SV720103	Gasolina	4WD	1998	85	115	04.95-08.98		
2.2 i (X 22 XE)	ch- SV720103	Gasolina	4WD	2198	100	136	03.95-10.98		
2.4 i (C 24 NE)	ch- SV720103	Gasolina	4WD	2410	92	125	03.92-10.98		
2.3 TD (23 DTR)	ch- SV720103	Diesel	4WD	2260	74	100	09.91-06.98		
2.5 TDS (25TDS (VM41B))	ch- SV720103	Diesel	4WD	2499	85	115	11.91-06.98		
2.8 TD (28 TDI (4JB1-T))	ch- SV720103	Diesel	4WD	2771	83	113	01.95-12.96		
FRONTERA Mk I (A) Sport (U92) 03.92-10.98						Open Off-Road Vehicle (Compact SUV-J Segment)			
2.0 i (C 20 NE)	ch- SV720103	Gasolina	4WD	1998	85	115	03.92-10.98	■	
2.0 i (X 20 SE)	ch- SV720103	Gasolina	4WD	1998	85	115	03.92-10.98		
2.5 TDS (25TDS (VM41B))	ch- SV720103	Diesel	4WD	2499	85	115	09.96-10.98		
2.8 TD (28 TDI (4JB1-T))	ch- SV720103	Diesel	4WD	2771	83	113	01.95-12.96		
FRONTERA Mk II (B) (U99) 10.98-10.04						Closed Off-Road Vehicle (Compact SUV-J Segment)			
2.2 i (X 22 SE)	ch- SV720103	Gasolina	4WD	2198	100	136	10.98-10.04	■	
2.2 i (Y 22 SE)	ch- SV720103	Gasolina	4WD	2198	100	136	10.98-10.04		
3.2 i (6VD1 (DOHC))	ch- SV720103	Gasolina	4WD	3165	151	205	10.98-10.04		
2.2 DTI (X 22 DTH)	ch- SV720103	Diesel	4WD	2171	85	116	10.98-09.04		
2.2 DTI (Y 22 DTH)	ch- SV720103	Diesel	4WD	2171	85	116	10.98-09.04		
2.2 DTI (Y 22 DTH)	ch- SV720103	Diesel	4WD	2171	88	120	09.00-10.04		
MONTEREY (M92) 09.91-07.98						Closed Off-Road Vehicle (Executive SUV-J Segment)			
3.2 (6VD1 (SOHC))	ch- SV720103	Gasolina	4WD	3165	130	177	06.92-07.98	■	
3.1 TD (4 JG2TC)	ch- SV720103	Diesel	4WD	3059	84	114	09.91-07.98		
MONTEREY MK II (M98) 07.98-08.99						Closed Off-Road Vehicle (Executive SUV-J Segment)			
3.5 V6 24V (6 VE1)	ch- SV720103	Gasolina	4WD	3494	158	215	07.98-08.99	■	
3.0 DTI (4 JX1)	ch- SV720103	Diesel	4WD	2999	117	159	07.98-08.99		