

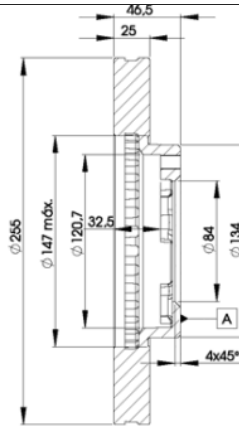
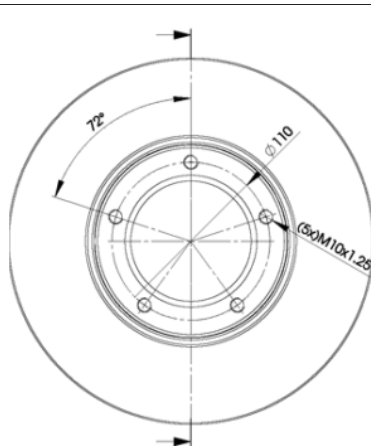
LISTA DE APLICACIONES - BUYERS GUIDE

78BD2609-2



Weight: 11.590

O.E.M.	MAKE
43512-26090	TOYOTA



78BD2609-2

E1 90R-02C0074/0061



Ø255x25x46.5

MAKE
TOYOTA



Trac.	CC	Kw	CV
-------	----	----	----



Front / Rear

TOYOTA

(_ N5_, _N6_) 08.83-08.88						Platform/Chassis ()			
1.8 (YN56) (2Y)		Gasolina	RWD	1812	58	79	08.83-07.88	■	
2.7 EFI (RZN154, RZN149) (3RZ-FE)		Gasolina	RWD	2694	107	145	08.97-08.05	■	
DYNA (LH8_) 08.85-05.95						Platform/Chassis (LCVs-N1 Segment)			
2.4 D (LH80_, LH80R) (2L)		Diesel	RWD	2446	55	75	08.87-04.95	■	
DYNA 100 (YH_) 08.85-04.95						Platform/Chassis (LCVs-N1 Segment)			
1.8 (YH81_, YH81R) (2Y)		Gasolina	RWD	1812	61	83	08.87-04.95	■	
2.4 D (LY100_, LY100R) (2L)		Diesel	RWD	2446	54	73	05.95-07.01	■	
2.4 D (LY100_) (2L)		Diesel	RWD	2446	58	79	05.95-07.01	■	
DYNA 150 (LY_) 08.88-06.95						Platform/Chassis (LCVs-N1 Segment)			
2.4 D (LY60) (2L)		Diesel	RWD	2446	55	75	09.88-04.95	■	
HiAce II (_H11_, _H2_, _H3_, _H4_) 02.77-03.83						Van (LCVs-N1 Segment)			
1.6 (RH30) (12R)		Gasolina	RWD	1588	49	67	02.77-03.83	■	
2.0 (RH32) (18R)		Gasolina	RWD	1968	65	88	02.77-03.83	■	
2.2 D (LH20, LH30) (L)		Diesel	RWD	2188	49	67	01.79-03.83	■	
HiAce III (_H5_, _H6_, _H7_, _H8_, _H9_) 11.82-09.07						Bus (Minibus-M2-Segment)			
2.2 (YH56, YH66, YH73) (4Y)		Gasolina	RWD	2237	69	94	08.86-08.89	■	
HiAce III (_H5_, _H6_, _H7_, _H8_, _H9_) 12.82-08.05						Van (LCVs-N1 Segment)			
2.0 (YH51, YH61) (3Y)		Gasolina	RWD	1998	65	88	12.82-08.89	■	
2.2 (YH56, YH66, YH53, YH63) (4Y)		Gasolina	RWD	2237	69	94	08.86-08.89	■	
2.2 D (LH50, LH60) (L)		Diesel	RWD	2188	49	67	12.82-11.89	■	

LISTA DE APLICACIONES - BUYERS GUIDE

2.4 D (LH61, LH51) (2L)		Diesel	RWD	2446	55	75	12.82-11.89	■
HiAce IV (_H1_) 08.89-02.05					Van (LCVs-N1 Segment)			
2.0 (RZH102, RZH112) (1RZ)		Gasolina	RWD	1998	74	101	02.90-08.04	■
2.0 (RZH102, RZH112)		Gasolina	RWD	1998	81	110	11.96-10.00	■
2.4 (RZH103_, RZH103R)		Gasolina	RWD	2438	72	98	08.89-10.96	■
2.4 (RZH10) (2RZ-E)		Gasolina	RWD	2438	88	120	08.89-08.95	■
2.4 4WD (RCH103_, RCH113_, RCH103R, RCH113R) (2RZ-E)		Gasolina	4WD	2438	88	120	08.89-08.95	■
2.4 D (2L)		Diesel	RWD	2446	53	72	01.92-08.95	■
2.4 D (LH112) (2L)		Diesel	RWD	2446	55	75	08.89-08.04	■
2.4 D 4WD (LH108, LH118) (2L)		Diesel	4WD	2446	55	75	08.89-07.99	■
2.4 D (LH102, LH104, LH112) (2L)		Diesel	RWD	2446	57	78	09.89-08.95	■
2.4 D 4WD (2L)		Diesel	4WD	2446	57	78	09.89-08.95	■
2.8 D (LH105, LH103, LH113) (3L)		Diesel	RWD	2779	61	83	08.89-08.00	■
3.0 D (LH162, LH172, LH182)		Diesel	RWD	2986	65	88	08.98-08.04	■
HiAce IV / QUANTUM (_H1_) 08.87-12.04					Bus (Minibus-M2-Segment)			
2.0 (RZH102, RZH112) (1RZ)		Gasolina	RWD	1998	74	101	08.89-04.98	■
2.0 (RZH124)		Gasolina	RWD	1998	81	110	11.96-10.00	■
2.4 (RZH125)		Gasolina	RWD	2438	72	98	08.89-10.96	■
2.4 (RZH103, RZH183) (2RZ-E)		Gasolina	RWD	2438	88	120	08.89-08.03	■
2.4 4WD (RZH103_, RZH109_, RZH113_, RZH115_, RZH103R,...) (2RZ-E)		Gasolina	4WD	2438	88	120	08.89-07.95	■
2.4 D (LH102) (2L)		Diesel	RWD	2446	55	75	08.89-08.95	■
2.4 D 4WD (LH51_, LH61_, LH66_, LH71_, LH51R, LH61R,...) (2L)		Diesel	4WD	2446	55	75	08.87-08.95	■
2.4 D (LH100, LH110, LH104, LH114) (2L)		Diesel	RWD	2446	57	78	08.89-12.04	■
2.8 D (LH105, LH125) (3L)		Diesel	RWD	2779	61	83	08.89-08.00	■
3.0 D (LH174)		Diesel	RWD	2986	65	88	08.98-08.04	■
HILUX IV / PICKUP (_N5_, _N6_) 11.82-11.98					Pickup (LCVs-N1 Segment)			
1.6 (YN55)		Gasolina	RWD	1626	55	75	11.83-09.87	■
2.2 D (LN50, LN55) (L)		Diesel	RWD	2188	49	67	08.83-08.84	■
HiLux SUV V / HiLux SURF (_N13_) 08.88-11.98					SUV (Pick-Up Truck)			
2.4 TD (LN85)		Diesel	RWD	2446	66	90	10.91-07.97	■
HiLux SUV VI / SW4 (_N1_, _N2_) 01.95-08.05					SUV (Pick-Up Truck)			
3.0 D (LN157)		Diesel	RWD	2986	70	95	11.97-05.05	■
3.0 D 4WD (LN157)		Diesel	4WD	2986	70	95	11.97-05.05	■
HILUX V (_N8_, _N9_, _N10_, _N11_) 09.88-08.01					Pickup (Pick-Up Truck)			
1.8 (YN85, YN90) (2Y)		Gasolina	RWD	1812	61	83	09.88-06.98	■
2.2 4WD (YN106)		Gasolina	4WD	2237	69	94	01.92-01.99	■
2.4 (RN90, RN85)		Gasolina	RWD	2367	75	102	10.88-12.98	■
2.4 D (LN5_, LN85, LN90) (2L)		Diesel	RWD	2446	55	75	10.88-07.97	■
2.4 TD (LN90)		Diesel	RWD	2446	66	90	01.92-01.99	■
2.8 D 4WD (LN107, LN111, LN166, LN106) (3L)		Diesel	4WD	2779	60	82	10.88-12.97	■
HILUX VI (_N1_) 08.94-03.06					Pickup (Pick-Up Truck)			
2.4 D (LN145, LN150) (2L)		Diesel	RWD	2446	58	79	08.97-07.05	■
2.4 D (LN145, LN150) (2L)		Diesel	RWD	2446	61	83	08.97-08.01	■
2.4 TD (LN190) (2L-T)		Diesel	RWD	2446	66	90	08.97-07.01	■
3.0 D 4WD (LN14_, LN152_, N140)		Diesel	4WD	2986	65	88	11.97-04.05	■
3.0 D		Diesel	RWD	2986	70	95	11.97-05.05	■
3.0 D 4WD		Diesel	4WD	2986	70	95	11.97-05.05	■

LISTA DE APLICACIONES - BUYERS GUIDE

3.0 D (LN147, LN192, LN152) (5L)	Diesel	RWD	2986	71	97	01.98-04.05	■
3.0 D (LN147, LN192, LN152) (5L-E)	Diesel	RWD	2986	71	97	01.98-04.05	■
3.0 D 4WD (LN167, LN172) (5L-E)	Diesel	4WD	2986	71	97	01.98-07.05	■
LITEACE (_M3_, _M4_) 01.83-04.98					Van (LCVs-N1 Segment)		
1.8 (YM30, YM35, YM31) (2Y)	Gasolina	RWD	1812	61	83	01.86-12.92	■