

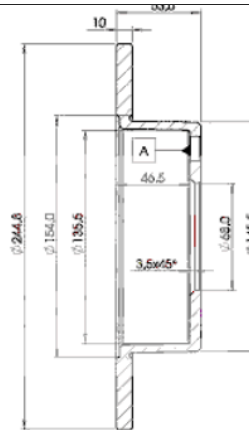
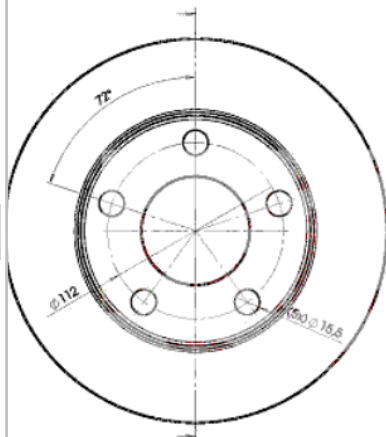
# LISTA DE APLICACIONES - BUYERS GUIDE

## 78BD2800-2



Weight: 7.200

O.E.M.	MAKE
4B0 615 601	VW



## 78BD2800-2

E1 90R-02C0415/0003



Ø245x10x53.8

MAKE
AUDI



Trac.	CC	Kw	CV
-------	----	----	----



Front / Rear

### AUDI

#### A6 II C5 Avant (4B5, 4B6) 11.97-01.06

#### Estate (Executive car-E Segment)

2.8 quattro	Gasolina	4WD	2771	140	190	08.98-04.01	■
-------------	----------	-----	------	-----	-----	-------------	---

#### A6 II C5 (4B2, 4B4) 01.97-12.05

#### Saloon (Executive car-E Segment)

1.8 T (AEB)	PR 0N1	Gasolina	FWD	1781	110	150	01.97-01.05	■
1.8 T (ANB)	PR 0N1	Gasolina	FWD	1781	110	150	01.97-01.05	■
1.8 T (APU)	PR 0N1	Gasolina	FWD	1781	110	150	01.97-01.05	■
1.8 T (ARK)	PR 0N1	Gasolina	FWD	1781	110	150	01.97-01.05	■
1.8 T (AWT)	PR 0N1	Gasolina	FWD	1781	110	150	01.97-01.05	■
1.8 T quattro (AEB)	PR 0N0	Gasolina	4WD	1781	110	150	02.97-01.05	■
1.8 T quattro (ANB)	PR 0N0	Gasolina	4WD	1781	110	150	02.97-01.05	■
1.8 T quattro (APU)	PR 0N0	Gasolina	4WD	1781	110	150	02.97-01.05	■
1.8 T quattro (ARK)	PR 0N0	Gasolina	4WD	1781	110	150	02.97-01.05	■
1.8 T quattro (AWT)	PR 0N0	Gasolina	4WD	1781	110	150	02.97-01.05	■
1.8 T quattro (AJL)	-06/01	Gasolina	4WD	1781	132	180	12.97-01.05	■
2.4 quattro (APC)		Gasolina	4WD	2393	115	156	08.98-07.99	■
2.4 quattro (AJG)	PR 0N1	Gasolina	4WD	2393	120	163	02.97-01.05	■
2.4 quattro (APZ)	PR 0N1	Gasolina	4WD	2393	120	163	02.97-01.05	■
2.4 quattro (AGA)	PR 0N1	Gasolina	4WD	2393	121	165	02.97-01.05	■
2.4 quattro (ALF)	PR 0N1	Gasolina	4WD	2393	121	165	02.97-01.05	■
2.4 quattro (AML)	PR 0N1	Gasolina	4WD	2393	121	165	02.97-01.05	■
2.4 quattro (APS)	PR 0N1	Gasolina	4WD	2393	121	165	02.97-01.05	■
2.4 quattro (ARJ)	PR 0N1	Gasolina	4WD	2393	121	165	02.97-01.05	■
2.7 T quattro (AJK)		Gasolina	4WD	2671	169	230	12.97-01.05	■
2.7 T quattro (AZA)		Gasolina	4WD	2671	169	230	12.97-01.05	■

# LISTA DE APLICACIONES - BUYERS GUIDE

2.8 quattro (ATX)		Gasolina	4WD	2771	140	190	07.99-05.01
2.8 quattro (ACK)		Gasolina	4WD	2771	142	193	02.97-01.05
2.8 quattro (ALG)		Gasolina	4WD	2771	142	193	02.97-01.05
2.8 quattro (AMX)		Gasolina	4WD	2771	142	193	02.97-01.05
2.8 quattro (APR)		Gasolina	4WD	2771	142	193	02.97-01.05
2.8 quattro (AQD)		Gasolina	4WD	2771	142	193	02.97-01.05
2.8 quattro (ATQ)		Gasolina	4WD	2771	142	193	02.97-01.05
S6 quattro (ANK)	vehicles with ABS	Gasolina	4WD	4172	250	340	09.99-01.05
S6 quattro (AQJ)	vehicles with ABS	Gasolina	4WD	4172	250	340	09.99-01.05
2.5 TDI quattro (AFB)	-05/01	Diesel	4WD	2496	110	150	07.97-01.05
2.5 TDI quattro (AKN)	-05/01	Diesel	4WD	2496	110	150	07.97-01.05
2.5 TDI quattro (AKE)	PR 0N1	Diesel	4WD	2496	132	180	02.00-01.05
2.5 TDI quattro (BAU)	PR 0N1	Diesel	4WD	2496	132	180	02.00-01.05
2.5 TDI quattro (BDH)	PR 0N1	Diesel	4WD	2496	132	180	02.00-01.05

