

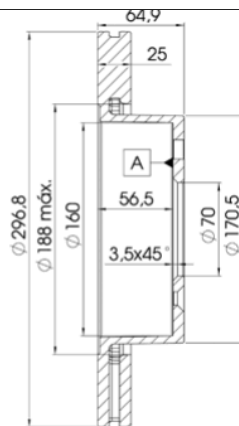
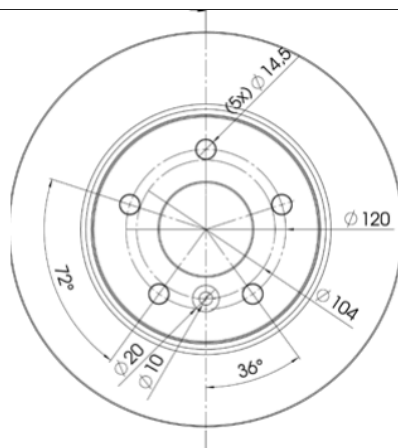
LISTA DE APLICACIONES - BUYERS GUIDE

78BD2817-2



Weight: 15.516

O.E.M.	MAKE
NTC-8780	LAND ROVER



78BD2817-2

E1 90R-02C0433/0097



Ø296.8x25x64.9

MAKE
LAND ROVER



Trac.	CC	Kw	CV
-------	----	----	----



Front / Rear

LAND ROVER

RANGE ROVER I 10.69-04.96

Closed Off-Road Vehicle (Executive SUV-J Segment)

3.9 Vogue SEI 4x4 (35 D)		Gasolina	4WD	3947	134	182	11.88-07.94	■
3.9 Vogue SEI 4x4 (36 D)		Gasolina	4WD	3947	134	182	11.88-07.94	■
2.5 TDI 4x4 (14 L)		Diesel	4WD	2495	83	113	11.92-04.96	■
2.5 TDI 4x4 (21 L)		Diesel	4WD	2495	83	113	11.92-04.96	■
2.5 TD 4x4 (14 L)		Diesel	4WD	2498	89	121	10.89-11.92	■
2.5 TD 4x4 (21 L)		Diesel	4WD	2498	89	121	10.89-11.92	■
2.5 TD 4x4 (95 A)		Diesel	4WD	2498	89	121	10.89-11.92	■

RANGE ROVER II (P38A) 07.94-03.02

Closed Off-Road Vehicle (Executive SUV-J Segment)

4.0 4x4 (42 D)		Gasolina	4WD	3947	136	185	01.95-03.02	■
3.9 4x4 (42 D)		Gasolina	4WD	3947	140	190	07.94-03.02	■
4.6 4x4 (46 D)		Gasolina	4WD	4553	165	224	07.94-03.02	■
4.6 4x4 (60 D)	11/98-	Gasolina	4WD	4554	160	218	06.98-03.02	■
4.6 4x4 (46 D)		Gasolina	4WD	4554	168	228	09.95-03.02	■
2.5 D 4x4		Diesel	4WD	2496	83	113	08.94-03.02	■
2.5 D 4x4 (25 6T (BMW))		Diesel	4WD	2497	100	136	07.94-03.02	■