

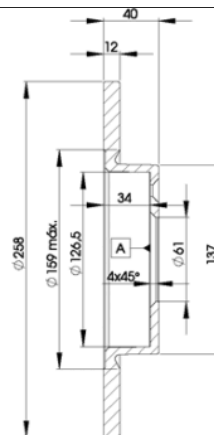
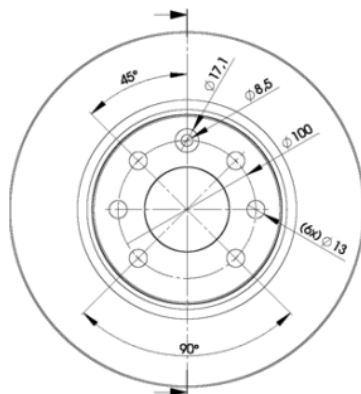
# LISTA DE APLICACIONES - BUYERS GUIDE

## 78BD2947-2



Weight: 8.636

O.E.M.	MAKE
3 410 294	VOLVO
3 410 294 7	VOLVO
3 459 661	VOLVO
3 459 661 9	VOLVO



## 78BD2947-2

E1 90R-02C0415/0005



Ø260x12x40

MAKE  
VOLVO



Trac.	CC	Kw	CV
-------	----	----	----



Front / Rear

### VOLVO

#### 440 (445) 08.88-12.96

					Hatchback (Compact car-C Segment)				
1.6 (B 16 F)		Gasolina	FWD	1596	61	83	09.88-12.96	■	
1.6 (B 16 FI)		Gasolina	FWD	1596	69	93	09.91-08.93	■	
1.7 (B 18 KD)		Gasolina	FWD	1721	58	78	09.88-08.92	■	
1.7 (B 18 K)		Gasolina	FWD	1721	60	81	09.88-08.89	■	
1.7 (B 18 KP)		Gasolina	FWD	1721	60	81	09.88-08.89	■	
1.7 (B 18 KP)		Gasolina	FWD	1721	64	87	09.88-12.96	■	
1.7 (B 18 F)		Gasolina	FWD	1721	70	95	08.88-07.89	■	
1.7 (B 18 FP)		Gasolina	FWD	1721	75	102	08.89-12.96	■	
1.7 (B 18 EP)		Gasolina	FWD	1721	78	106	09.88-12.96	■	
1.7 (B 18 EP)		Gasolina	FWD	1721	80	109	09.88-08.89	■	
1.7 Turbo (B 18 FT)		Gasolina	FWD	1721	88	120	08.88-07.96	■	
1.7 Turbo (B 18 FT)		Gasolina	FWD	1721	90	122	01.91-12.96	■	
1.8 (B 18 U)		Gasolina	FWD	1794	66	90	08.91-07.96	■	
1.8 (B 18 U)		Gasolina	FWD	1794	66	90	09.95-12.96	■	
2.0 (B 20 F)		Gasolina	FWD	1998	80	109	08.93-07.96	■	
2.0 (B 20 F)		Gasolina	FWD	1998	81	110	08.92-07.95	■	
1.9 Turbo-Diesel (D 19 T)		Diesel	FWD	1870	66	90	07.94-12.96	■	

#### 460 (464) 09.88-12.96

					Saloon (Compact car-C Segment)				
1.6 (B 16 F)		Gasolina	FWD	1596	61	83	07.92-07.96	■	
1.7 (B 18 KD)		Gasolina	FWD	1721	58	78	09.89-08.91	■	
1.7 (B 18 KP)		Gasolina	FWD	1721	64	87	09.88-07.96	■	
1.7 (B 18 KP)		Gasolina	FWD	1721	66	90	09.90-07.96	■	

# LISTA DE APLICACIONES - BUYERS GUIDE

1.7 (B 18 EP)	Gasolina	FWD	1721	75	102	08.89-07.92	■
1.7 (B 18 E)	Gasolina	FWD	1721	80	109	08.89-07.92	■
1.7 Turbo (B 18 FT)	Gasolina	FWD	1721	88	120	08.89-07.96	■
1.7 Turbo (B 18 FT)	Gasolina	FWD	1721	90	122	01.91-07.96	■
1.8 (B 18 U)	Gasolina	FWD	1794	66	90	08.91-07.96	■
2.0 (B 20 F)	Gasolina	FWD	1998	80	109	08.93-07.96	■
2.0 (B 20 F)	Gasolina	FWD	1998	81	110	08.92-07.95	■
1.9 Turbo-Diesel (D 19 T)	Diesel	FWD	1870	66	90	07.94-07.96	■
<b>480 (482) 04.86-07.96</b>				<b>Coupe (Compact car-C Segment)</b>			
1.7 (B 18 F)	Gasolina	FWD	1721	70	95	08.87-07.89	■
1.7 (B 18 EP)	Gasolina	FWD	1721	75	102	08.89-07.96	■
1.7 (B 18 E)	Gasolina	FWD	1721	78	106	04.86-07.89	■
1.7 (B 18 E)	Gasolina	FWD	1721	80	109	08.86-07.88	■
1.7 Turbo (B 18 FT)	Gasolina	FWD	1721	88	120	08.87-07.96	■
1.7 Turbo (B 18 FT)	Gasolina	FWD	1721	90	122	01.91-07.96	■
2.0 (B 20 F)	Gasolina	FWD	1998	81	110	08.92-09.95	■