

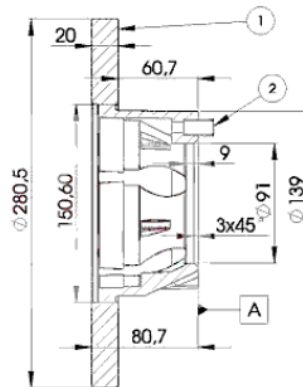
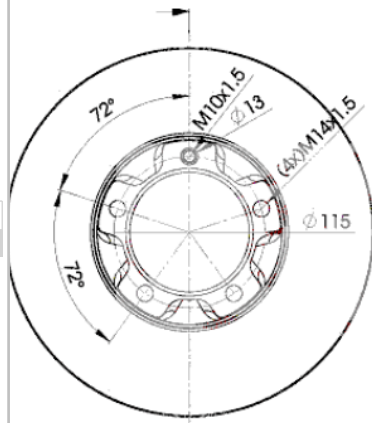
LISTA DE APLICACIONES - BUYERS GUIDE

78BD3017-1



Weight: 9.110

O.E.M.	MAKE
281 615 283 A	VW



78BD3017-1

E1 90R-02C0100/1732



Ø281x20x80.5

MAKE
RENAULT
VW



Trac.	CC	Kw	CV	
				Front / Rear

RENAULT

VEL SATIS (BJ0_) 06.02-

Hatchback (Executive car-E Segment)

2.0 dCi (BJ03) (M9R 760)	Diesel	FWD	1995	110	150	08.05-	■
2.0 dCi (BJ03, BJ0B) (M9R 760)	Diesel	FWD	1995	127	173	01.06-	■
2.0 dCi (BJ03, BJ0B) (M9R 762)	Diesel	FWD	1995	127	173	01.06-	■
2.0 dCi (BJ03, BJ0B) (M9R 763)	Diesel	FWD	1995	127	173	01.06-	■
3.0 dCi (BJ0S) (P9X 715)	Diesel	FWD	2958	133	181	06.06-08.09	■

VW

K 70 (48) 08.70-10.74

Saloon (Executive car-E Segment)

1.8 (DC)	Gasolina	FWD	1807	74	100	08.73-10.74	■
----------	----------	-----	------	----	-----	-------------	---

LT 28-35 / LT 28-50 (281-363) 04.75-06.96

Bus (Minibus-M2-Segment)

2.0 (CH)	Gasolina	RWD	1984	55	75	04.75-09.83	■
2.4 i (1E)	Gasolina	RWD	2383	69	94	08.89-06.96	■
2.4 (1E)	Gasolina	RWD	2383	70	95	08.88-12.95	■
2.4 (DL)	Gasolina	RWD	2384	66	90	12.82-07.92	■
2.4 D (1S)	Diesel	RWD	2383	51	70	08.89-06.96	■
2.4 D (ACT)	Diesel	RWD	2383	51	70	08.89-06.96	■
2.4 D (CP)	Diesel	RWD	2383	55	75	01.79-07.92	■
2.4 D (DW)	Diesel	RWD	2383	55	75	01.79-07.92	■
2.4 TD (1G)	Diesel	RWD	2384	68	92	08.89-08.92	■
2.4 TD (ACL)	Diesel	RWD	2384	70	95	09.92-06.96	■
2.4 TD (DV)	Diesel	RWD	2384	75	102	12.82-07.89	■

LISTA DE APLICACIONES - BUYERS GUIDE

LT 28-35 / LT 28-50 (281-363) 04.75-06.96					Platform/Chassis (LCVs-N1 Segment)			
2.0 (CH)		Gasolina	RWD	1984	55	75	04.75-09.83	■
2.4 i (1E)		Gasolina	RWD	2383	69	94	03.94-06.96	■
2.4 Syncro (1E)		Gasolina	4WD	2383	70	95	08.92-07.94	■
2.4 (DL)		Gasolina	RWD	2384	66	90	12.82-07.92	■
2.4 Syncro (DL)		Gasolina	4WD	2384	66	90	08.91-07.92	■
2.4 D (1S)		Diesel	RWD	2383	51	69	08.90-06.96	■
2.4 D (ACT)		Diesel	RWD	2383	51	69	08.90-06.96	■
2.4 D Syncro (1S)		Diesel	4WD	2383	51	69	08.91-07.92	■
2.4 D (CP)		Diesel	RWD	2383	55	75	12.78-02.91	■
2.4 D (DW)		Diesel	RWD	2383	55	75	12.78-02.91	■
2.4 D Syncro (DW)		Diesel	4WD	2383	55	75	08.91-07.92	■
2.4 D		Diesel	RWD	2383	57	78	12.82-07.92	■
2.4 TD (1G)		Diesel	RWD	2384	68	92	08.90-08.92	■
2.4 TD Syncro (1G)		Diesel	4WD	2384	68	92	08.91-07.92	■
2.4 TD (ACL)		Diesel	RWD	2384	70	95	08.92-06.96	■
2.4 TD Syncro (ACL)		Diesel	4WD	2384	70	95	08.92-04.96	■
2.4 TD (DV)		Diesel	RWD	2384	75	102	12.82-09.93	■
2.4 TD Syncro (DV)		Diesel	4WD	2384	75	102	08.91-07.92	■
2.7 D (CG)		Diesel	RWD	2702	48	65	11.75-01.80	■
LT 28-35 / LT 28-50 (281-363) 04.75-06.96					Van (LCVs-N1 Segment)			
2.0 (CH)		Gasolina	RWD	1984	55	75	04.75-09.83	■
2.4 i (1E)		Gasolina	RWD	2383	69	94	08.89-06.96	■
2.4 (DL)		Gasolina	RWD	2384	66	90	12.82-07.92	■
2.4 D (1S)		Diesel	RWD	2383	51	69	07.90-05.96	■
2.4 D (ACT)		Diesel	RWD	2383	51	69	07.90-05.96	■
2.4 D (CP)		Diesel	RWD	2383	55	75	01.79-07.92	■
2.4 D (DW)		Diesel	RWD	2383	55	75	01.79-07.92	■
2.4 D		Diesel	RWD	2383	57	78	12.82-07.92	■
2.4 TD (1G)		Diesel	RWD	2384	68	92	08.88-08.92	■
2.4 TD (ACL)		Diesel	RWD	2384	70	95	06.92-05.96	■
2.4 TD Syncro (ACL)		Diesel	4WD	2384	70	95	08.92-04.96	■
2.4 TD (DV)		Diesel	RWD	2384	75	102	02.86-08.92	■
2.7 D (CG)		Diesel	RWD	2702	48	65	11.75-01.80	■
LT 40-55 (293-909) 04.75-06.96					Platform/Chassis (LCVs-N1 Segment)			
2.0 (CH)		Gasolina	RWD	1984	55	75	04.75-09.83	■
2.4 i (1E)		Gasolina	RWD	2383	69	94	03.94-06.96	■
2.4 (1E)		Gasolina	RWD	2383	70	95	08.88-07.89	■
2.4 (DL)		Gasolina	RWD	2384	66	90	08.85-07.89	■
2.4 Syncro (DL)		Gasolina	4WD	2384	66	90	12.82-07.89	■
2.4 D (1S)		Diesel	RWD	2383	51	69	08.90-06.96	■
2.4 D (ACT)		Diesel	RWD	2383	51	69	08.90-06.96	■
2.4 D (CP)		Diesel	RWD	2383	55	75	12.78-02.91	■
2.4 D (DW)		Diesel	RWD	2383	55	75	12.78-02.91	■
2.4 D		Diesel	RWD	2383	57	78	12.82-07.92	■
2.4 TD (1G)		Diesel	RWD	2384	68	92	08.88-07.91	■
2.4 TD Syncro (1G)		Diesel	4WD	2384	68	92	08.91-07.92	■
2.4 TD (ACL)		Diesel	RWD	2384	70	95	08.92-06.96	■
2.4 TD Syncro (ACL)		Diesel	4WD	2384	70	95	08.92-04.96	■
2.4 TD (DV)		Diesel	RWD	2384	75	102	12.82-09.93	■

LISTA DE APLICACIONES - BUYERS GUIDE

2.4 TD Syncro (DV)	Diesel	4WD	2384	75	102	12.82-07.92	■
LT 40-55 (291-512) 04.75-06.96				Van (LCVs-N1 Segment)			
2.0 (CH)	Gasolina	RWD	1984	55	75	04.75-09.83	■
2.4 i (1E)	Gasolina	RWD	2383	69	94	01.93-06.96	■
2.4 (DL)	Gasolina	RWD	2384	66	90	12.82-07.92	■
2.4 4WD (DL)	Gasolina	4WD	2384	66	90	12.82-07.92	■
2.4 D (1S)	Diesel	RWD	2383	51	69	07.90-05.96	■
2.4 D (ACT)	Diesel	RWD	2383	51	69	07.90-05.96	■
2.4 D (CP)	Diesel	RWD	2383	55	75	01.79-07.92	■
2.4 D (DW)	Diesel	RWD	2383	55	75	01.79-07.92	■
2.4 D 4WD (DW)	Diesel	4WD	2383	55	75	12.82-07.91	■
2.4 D	Diesel	RWD	2383	57	78	12.82-07.92	■
2.4 TD (1G)	Diesel	RWD	2384	68	92	08.88-08.92	■
2.4 TD (ACL)	Diesel	RWD	2384	70	95	06.92-05.96	■
2.4 TD Syncro (ACL)	Diesel	4WD	2384	70	95	08.92-04.96	■
2.4 TD (DV)	Diesel	RWD	2384	75	102	02.86-08.92	■
2.4 TD 4WD (DV)	Diesel	4WD	2384	75	102	12.82-07.91	■