

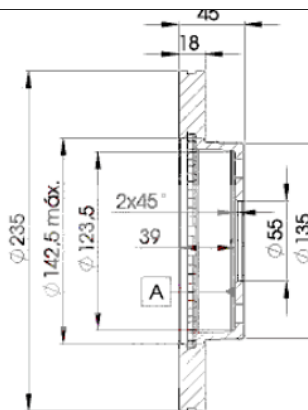
LISTA DE APLICACIONES - BUYERS GUIDE

78BD3254-2



Weight: 7.380

| O.E.M. | MAKE |
|--------------|-------|
| NA01-33-25 | MAZDA |
| NA01-33-25A | MAZDA |
| NA01-33-25X | SAO |
| NA01-33-25XA | MAZDA |
| NA01-33-25XC | MAZDA |
| NA01-33-25XD | MAZDA |
| NA01-33-25XA | MAZDA |
| SA01-33-25X | MAZDA |



78BD3254-2



Ø235x18x45

| MAKE |
|-------|
| KIA |
| MAZDA |
| SAO |



| Trac. | CC | Kw | CV | | |
|-------|----|----|----|--|--------------|
| | | | | | Front / Rear |

KIA

AVELLA (KBA1) 11.95-12.01

Hatchback (Supermini car-B Segment)

| | | | | | | | |
|----------|----------|-----|------|----|----|-------------|---|
| 1.3 (B3) | Gasolina | FWD | 1324 | 55 | 75 | 11.95-12.01 | ■ |
| 1.5 | Gasolina | FWD | 1498 | 55 | 75 | 02.97-12.01 | ■ |

AVELLA (KBA1) 11.95-12.01

Saloon (Supermini car-B Segment)

| | | | | | | | |
|----------|----------|-----|------|----|----|-------------|---|
| 1.3 (B3) | Gasolina | FWD | 1324 | 55 | 75 | 11.95-12.01 | ■ |
|----------|----------|-----|------|----|----|-------------|---|

MAZDA

121 II (DB) 11.90-05.97

Saloon (Supermini car-B Segment)

| | | | | | | | |
|------------------------------|-------------------------------|-----|------|----|----|-------------|---|
| 1.1 (B1) | Gasolina | FWD | 1138 | 40 | 54 | 11.90-10.93 | ■ |
| 1.3 16V (DB3PA) (B3 (16V)) | Manual Transmission, Gasolina | FWD | 1324 | 39 | 53 | 11.90-03.96 | ■ |
| 1.3 i 16V (DB3PA) (B3 (16V)) | Manual Transmission, Gasolina | FWD | 1324 | 53 | 72 | 11.90-03.96 | ■ |
| 1.5 (DB3PA) (B5-MI) | Gasolina | FWD | 1498 | 65 | 88 | 11.90-05.97 | ■ |

323 C VI / ETUDE / FAMILIA (BG) 06.89-09.00

Hatchback (Compact car-C Segment)

| | | | | | | | | |
|---------------------------|---------------------|----------|-----|------|----|-----|-------------|---|
| 1.3 (BG3S) (B3E) | Manual Transmission | Gasolina | FWD | 1324 | 49 | 67 | 09.89-07.94 | ■ |
| 1.3 16V (BG3S) (B3 (16V)) | Manual Transmission | Gasolina | FWD | 1324 | 54 | 73 | 09.89-07.94 | ■ |
| 1.6 (BG6Z) (B6E) | Manual Transmission | Gasolina | FWD | 1597 | 62 | 84 | 09.89-06.91 | ■ |
| 1.6 16V (BG6Z) (B6) | Manual Transmission | Gasolina | FWD | 1597 | 65 | 88 | 03.91-10.94 | ■ |
| 1.6 (BG6Z) (B67K) | | Gasolina | FWD | 1597 | 66 | 90 | 09.93-09.00 | ■ |
| 1.8 16V 4WD (BG8S) (BP) | | Gasolina | 4WD | 1840 | 76 | 103 | 11.91-12.93 | ■ |
| 1.7 D (BG7S) (PN54) | 04/91- | Diesel | FWD | 1720 | 41 | 56 | 08.89-07.94 | ■ |

323 C VII / 323 ASTINA / FAMILIA (BA) 08.94-01.01

Coupe (Compact car-C Segment)

| | | | | | | | |
|--------------------|----------|-----|------|----|----|-------------|---|
| 1.3 16V (B3 (16V)) | Gasolina | FWD | 1324 | 54 | 73 | 08.94-09.98 | ■ |
|--------------------|----------|-----|------|----|----|-------------|---|

LISTA DE APLICACIONES - BUYERS GUIDE

| 323 F V-VI / 323 ASTINA / ASTINA / ETUDE / FAMILIA (BG) 04.87-10.94 | | | | | Hatchback (Compact car-C Segment) | | | |
|---|---------------------|----------|-----|------|-------------------------------------|-----|-------------|---|
| 1.6 (BG6S, BG6P) (B6E) | Manual Transmission | Gasolina | FWD | 1597 | 62 | 84 | 09.89-06.91 | ■ |
| 1.6 16V (BG6S, BG6P) (B6) | Manual Transmission | Gasolina | FWD | 1597 | 65 | 88 | 03.91-10.94 | ■ |
| 1.6 (BG6S, BG6P) (B67J) | Manual Transmission | Gasolina | FWD | 1597 | 66 | 90 | 04.91-04.94 | ■ |
| 1.6 (BG6S, BG6P) (B67K) | Manual Transmission | Gasolina | FWD | 1597 | 66 | 90 | 04.91-04.94 | ■ |
| 1.6 (BG6S, BG6P) (B67L) | Manual Transmission | Gasolina | FWD | 1597 | 66 | 90 | 04.91-04.94 | ■ |
| 1.8 16V (BG8S, BG8P) (BP) | | Gasolina | FWD | 1840 | 76 | 103 | 08.89-07.94 | ■ |
| 1.8 4WD (BG8R) (BPC) | | Gasolina | 4WD | 1840 | 76 | 103 | 01.91-04.94 | ■ |
| 323 P VII / 323 PROTEGÉ / ETUDE / FAMILIA (BA) 10.96-09.98 | | | | | Hatchback (Compact car-C Segment) | | | |
| 1.3 16V (B3 (16V)) | | Gasolina | FWD | 1324 | 54 | 73 | 10.96-09.98 | ■ |
| 323 S VI / FAMILIA / PROTEGE (BG) 06.89-10.96 | | | | | Saloon (Compact car-C Segment) | | | |
| 1.3 (BG3P) (B383) | Manual Transmission | Gasolina | FWD | 1324 | 49 | 67 | 09.89-06.91 | ■ |
| 1.3 (BG3P) (B3E) | Manual Transmission | Gasolina | FWD | 1324 | 49 | 67 | 09.89-06.91 | ■ |
| 1.3 16V (BG3P) (B3 (16V)) | Manual Transmission | Gasolina | FWD | 1324 | 54 | 73 | 04.91-07.94 | ■ |
| 1.6 (BG6S) (B6E) | Manual Transmission | Gasolina | FWD | 1597 | 62 | 84 | 09.89-06.91 | ■ |
| 1.6 (BG6S) (B61V) | | Gasolina | FWD | 1597 | 64 | 87 | 06.89-03.91 | ■ |
| 1.6 16V (BG6S) (B6) | Manual Transmission | Gasolina | FWD | 1597 | 65 | 88 | 08.89-10.96 | ■ |
| 1.6 | Manual Transmission | Gasolina | FWD | 1597 | 66 | 90 | 04.91-10.94 | ■ |
| 1.8 16V (BG8P) (BP52) | | Gasolina | FWD | 1840 | 76 | 103 | 08.89-07.94 | ■ |
| 1.8 16V 4WD (BP52) | | Gasolina | 4WD | 1840 | 76 | 103 | 09.91-07.94 | ■ |
| 1.7 D (BG7P) (PN46) | -11/89 | Diesel | FWD | 1720 | 41 | 56 | 08.89-07.94 | ■ |
| 1.7 D (BG7P) (PN54) | -11/89 | Diesel | FWD | 1720 | 41 | 56 | 08.89-07.94 | ■ |
| 1.7 D (BG7P) (PN62) | -11/89 | Diesel | FWD | 1720 | 41 | 56 | 08.89-07.94 | ■ |
| 323 S VII / 323 PROTEGÉ / ETUDE / FAMILIA (BA) 09.92-12.03 | | | | | Saloon (Compact car-C Segment) | | | |
| 1.3 16V (B3 (16V)) | | Gasolina | FWD | 1324 | 54 | 73 | 08.94-09.98 | ■ |
| MX-5 (NA) 09.89-04.98 | | | | | Convertible (Sports car-S Segment) | | | |
| 1.6 | | Gasolina | RWD | 1597 | 78 | 106 | 09.89-12.93 | ■ |
| 1.6 (NA6C) (B64F) | | Gasolina | RWD | 1597 | 85 | 115 | 05.90-01.94 | ■ |
| 1.6 Turbo | | Gasolina | RWD | 1597 | 110 | 150 | 09.90-12.92 | ■ |
| 1.6 (NA6C) (8AN1) | | Gasolina | RWD | 1598 | 66 | 90 | 01.95-04.98 | ■ |
| 1.8 (NA8C) (BP (DOHC)) | | Gasolina | RWD | 1840 | 96 | 130 | 01.93-04.98 | ■ |
| 1.8 (NA8C) (BPF1) | | Gasolina | RWD | 1840 | 96 | 130 | 01.93-04.98 | ■ |
| SAO | | | | | | | | |
| PENZA 06.91-12.93 | | | | | Hatchback (Supermini car-B Segment) | | | |
| 1.3 (B3) | | Gasolina | FWD | 1324 | 50 | 68 | 06.91-12.93 | ■ |
| PENZA 06.91-12.93 | | | | | Saloon (Supermini car-B Segment) | | | |
| 1.3 (B3) | | Gasolina | FWD | 1324 | 50 | 68 | 06.91-12.93 | ■ |