

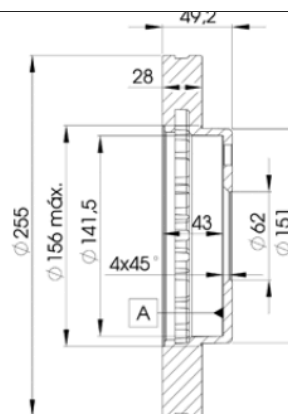
LISTA DE APLICACIONES - BUYERS GUIDE

78BD3302-2



Weight: 11.910

O.E.M.	MAKE
43512-33020	TOYOTA
43512-33050	TOYOTA



78BD3302-2

E1 90R-02C0074/1480



Ø255x28x49.2

MAKE
TOYOTA



Trac.	CC	Kw	CV		
					Front / Rear

TOYOTA

CAMRY / SCEPTER (_V1_) 07.90-10.01					Saloon (Executive car-E Segment)			
2.2 (SDV10, SXV10)	Gasolina	FWD	2164	93	126	02.93-08.97	■	
GAIA (_M1_) 05.98-08.04					MPV (Large MPV-M1 Segment)			
2.0 VVTi (SXM10)	Gasolina	FWD	1998	99	135	05.98-03.01	■	
2.0 VVTi 4WD (SXM15) (3S-FE)	Gasolina	4WD	1998	99	135	05.98-07.02	■	
2.0 VVTi (ACM10) (1AZ-FSE)	Gasolina	FWD	1998	112	152	04.01-08.04	■	
2.0 VVTi 4WD (ACM15) (1AZ-FSE)	Gasolina	4WD	1998	112	152	08.02-08.04	■	
2.2 TD (CXM10) (3C-TE)	Diesel	FWD	2184	69	94	05.98-08.04	■	
PICNIC III / IPSUM (_XM1_) 05.96-12.01					MPV (Large MPV-M1 Segment)			
2.0 (SXM10_, SXM10G) (3S-FE)	Gasolina	FWD	1998	90	122	06.00-12.01	■	
2.0 16V (SXM10_, SXM10G) (3S-FE)	Gasolina	FWD	1998	94	128	08.96-09.00	■	
2.0 (SXM10) (3S-FE)	Gasolina	FWD	1998	99	135	09.96-05.01	■	
2.0 4WD (SXM15)	Gasolina	4WD	1998	99	135	09.96-05.01	■	
2.0 (SXM10_, SXM10G) (3S-FE)	Gasolina	FWD	1998	100	136	05.96-04.01	■	
2.2 D (CMX10_, CXM10G) (3C-TE)	Diesel	FWD	2184	66	90	08.97-12.01	■	
SCEPTER 11.92-09.96					Saloon (Executive car-E Segment)			
2.2 (SXV10) (5S-FE)	Gasolina	FWD	2164	100	136	11.92-09.96	■	