

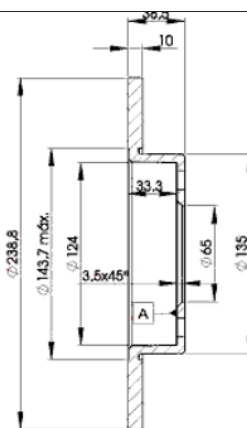
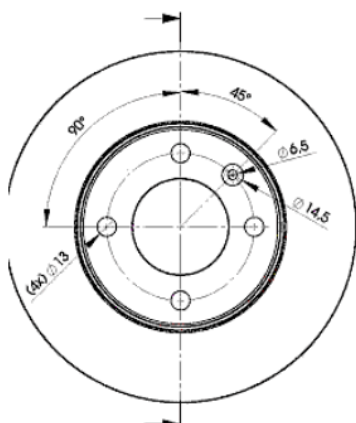
LISTA DE APLICACIONES - BUYERS GUIDE

78BD3325-2



Weight: 6.420

O.E.M.	MAKE
811 615 301	VW
823 615 301	VW



78BD3325-2

E1 90R-02C0415/0039



Ø239x10x38.6

MAKE

AUDI

SEAT

VW



Trac.	CC	Kw	CV
-------	----	----	----



Front / Rear

AUDI

100 C1 (801, 803, 805, 807, 811, 813, F104) 11.68-07.76

Saloon (Executive car-E Segment)

1.6 (YM)	Gasolina	FWD	1588	63	85	01.75-07.76	■
1.8 (ZV)	Gasolina	FWD	1760	59	80	11.68-11.71	■
1.8 (ZU)	Gasolina	FWD	1760	63	85	09.71-07.74	■
1.8 (ZX)	Gasolina	FWD	1760	66	90	11.68-11.71	■
1.8 (ZS)	Gasolina	FWD	1760	74	100	10.70-07.76	■
1.8 (ZZ)	Gasolina	FWD	1760	74	100	10.70-07.76	■
1.8	Gasolina	FWD	1760	79	107	11.68-12.71	■

50 (863) 08.74-07.78

Hatchback (Supermini car-B Segment)

0.8 (HE)	Gasolina	FWD	771	25	34	01.76-07.78	■
1.1 (HB)	Gasolina	FWD	1093	37	50	08.74-07.78	■
1.1 (HC)	Gasolina	FWD	1093	44	60	08.74-07.77	■
1.3 (HJ)	Gasolina	FWD	1272	43	58	01.77-07.78	■
1.3 (HH)	Gasolina	FWD	1272	44	60	08.77-07.78	■

80 II B1 / FOX (80, 82) 05.72-07.78

Saloon (Compact executive car-D Segment)

1.3 (ZA)	Gasolina	FWD	1297	40	55	05.72-07.78	■
1.3 (ZF)	Gasolina	FWD	1297	44	60	05.72-07.78	■
1.6 (FS)	Gasolina	FWD	1588	53	72	01.76-07.78	■

80 III B2 / 4000 (811, 813, 814, 819, 853) 08.78-03.87

Saloon (Compact executive car-D Segment)

1.3 (FY)	Gasolina	FWD	1272	40	55	09.78-07.81	■
1.3 (FZ)	Gasolina	FWD	1272	44	60	09.78-07.81	■
1.3 (EP)	Gasolina	FWD	1297	44	60	09.78-07.86	■

LISTA DE APLICACIONES - BUYERS GUIDE

SEAT								
CORDOBA (6K1, 6K2) 02.93-12.02					Saloon (Supermini car-B Segment)			
1.4 i (ABD)	07/96-	Gasolina	FWD	1389	44	60	06.94-10.02	■
1.4 i (AEX)	07/96-	Gasolina	FWD	1389	44	60	06.94-10.02	■
1.4 i (AKK)	07/96-	Gasolina	FWD	1389	44	60	06.94-10.02	■
1.4 i (AKV)	07/96-	Gasolina	FWD	1389	44	60	06.94-10.02	■
1.4 i (ANW)	07/96-	Gasolina	FWD	1389	44	60	06.94-10.02	■
1.4 i (APQ)	07/96-	Gasolina	FWD	1389	44	60	06.94-10.02	■
1.4 i (AUD)	07/96-	Gasolina	FWD	1389	44	60	06.94-10.02	■
1.4 (ANX)		Gasolina	FWD	1390	40	54	12.97-04.99	■
1.6 i (1F)	-ch 6K-Z-R711093	Gasolina	FWD	1595	55	75	05.94-06.99	■
1.6 i (ABU)	-ch 6K-Z-R711093	Gasolina	FWD	1598	55	75	02.93-10.02	■
1.6 i (AEE)	-ch 6K-Z-R711093	Gasolina	FWD	1598	55	75	02.93-10.02	■
1.6 i (ALM)	-ch 6K-Z-R711093	Gasolina	FWD	1598	55	75	02.93-10.02	■
CORDOBA II (6K2) 06.99-10.02					Saloon (Supermini car-B Segment)			
1.0		Gasolina	FWD	999	37	50	06.99-10.02	■
1.0 16V		Gasolina	FWD	999	51	69	05.00-10.02	■
IBIZA II (6K1) 03.93-05.02					Hatchback (Supermini car-B Segment)			
1.0 i (AER)		Gasolina	FWD	999	37	50	09.96-02.02	■
1.0 i (ALD)		Gasolina	FWD	999	37	50	09.96-02.02	■
1.0 i (ANV)		Gasolina	FWD	999	37	50	09.96-02.02	■
1.0 i (AUC)		Gasolina	FWD	999	37	50	09.96-02.02	■
1.0 (AAU)		Gasolina	FWD	1043	33	45	03.93-09.96	■
1.3 i (2G)		Gasolina	FWD	1272	40	54	03.93-08.99	■
1.3 i (AAV)		Gasolina	FWD	1272	40	54	03.93-08.99	■
1.4 i (ABD)		Gasolina	FWD	1389	44	60	09.93-02.02	■
1.4 i (AEX)		Gasolina	FWD	1389	44	60	09.93-02.02	■
1.4 i (AKK)		Gasolina	FWD	1389	44	60	09.93-02.02	■
1.4 i (AKV)		Gasolina	FWD	1389	44	60	09.93-02.02	■
1.4 i (ANW)		Gasolina	FWD	1389	44	60	09.93-02.02	■
1.4 i (APQ)		Gasolina	FWD	1389	44	60	09.93-02.02	■
1.4 i (AUD)		Gasolina	FWD	1389	44	60	09.93-02.02	■
1.4 (ANX)		Gasolina	FWD	1390	40	54	12.97-04.99	■
VW								
DERBY (86) 02.77-09.81					Saloon (Supermini car-B Segment)			
0.9 (HA)		Gasolina	FWD	895	29	40	02.77-09.81	■
1.0 (GL)		Gasolina	FWD	1043	29	40	10.81-12.84	■
1.0		Gasolina	FWD	1043	33	45	08.81-12.84	■
1.1 (HB)		Gasolina	FWD	1093	37	50	02.77-09.81	■
1.1 (HB)		Gasolina	FWD	1093	37	50	10.81-07.83	■
1.3 (HW)		Gasolina	FWD	1272	37	50	08.83-12.84	■
1.3 (HK)		Gasolina	FWD	1272	40	55	08.83-12.84	■
1.3 (HJ)		Gasolina	FWD	1272	43	58	02.77-09.81	■
1.3 (HH)		Gasolina	FWD	1272	44	60	02.77-09.81	■
1.3 (HH)		Gasolina	FWD	1272	44	60	08.81-07.83	■
1.3 (GK)	08/83-	Gasolina	FWD	1272	55	75	09.82-12.84	■
GOLF I / RABBIT (155) 01.79-08.93					Convertible (Compact car-C Segment)			
1.3 (HK)		Gasolina	FWD	1272	40	54	08.83-07.86	■

LISTA DE APLICACIONES - BUYERS GUIDE

GOLF I / RABBIT (17) 04.74-12.85					Hatchback (Compact car-C Segment)			
1.1 (FA)	08/75-	Gasolina	FWD	1093	37	50	04.74-07.83	■
1.1 (GG)	08/75-	Gasolina	FWD	1093	37	50	04.74-07.83	■
1.1 (FJ)		Gasolina	FWD	1093	38	52	08.76-07.80	■
1.1		Gasolina	FWD	1093	44	60	01.81-07.83	■
1.3 (GS)		Gasolina	FWD	1272	43	58	08.82-12.83	■
1.3 (GF)		Gasolina	FWD	1272	44	60	08.79-07.83	■
1.5 D (CK)		Diesel	FWD	1471	37	50	08.76-07.80	■
1.6 D (CR)		Diesel	FWD	1588	40	54	08.80-07.83	■
1.6 D (JK)		Diesel	FWD	1588	40	54	08.80-07.83	■
1.6 D		Diesel	RWD	1588	44	60	01.82-07.84	■
1.6 TD (CY)		Diesel	FWD	1588	51	70	03.82-07.83	■
1.6 TD		Diesel	RWD	1588	55	75	08.83-07.85	■
GOLF II (19E, 1G1) 08.83-12.92					Hatchback (Compact car-C Segment)			
1.0 (GN)		Gasolina	FWD	1043	33	45	11.83-08.85	■
1.0 (HZ)		Gasolina	FWD	1043	37	50	08.85-10.91	■
1.3 (NU)		Gasolina	FWD	1272	37	50	08.85-12.87	■
1.3 (HK)		Gasolina	FWD	1272	40	55	08.83-06.87	■
1.3 (MH)		Gasolina	FWD	1272	40	55	08.83-06.87	■
1.3 Cat (2G)	vehicles without ABS	Gasolina	FWD	1272	40	55	06.86-12.92	■
1.3 Cat (MH)	vehicles without ABS	Gasolina	FWD	1272	40	55	06.86-12.92	■
1.3 Cat (NZ)	vehicles without ABS	Gasolina	FWD	1272	40	55	06.86-12.92	■
1.3 (GT)	vehicles without ABS	Gasolina	FWD	1272	43	58	08.83-10.86	■
1.8 GTI G60 (PG)		Gasolina	FWD	1781	118	160	04.90-07.91	■
1.8 GTI G60 Syncro (1H)		Gasolina	4WD	1781	118	160	08.88-12.91	■
1.8 GTI G60 Syncro (PG)		Gasolina	4WD	1781	118	160	08.88-12.91	■
1.6 D (ME)	vehicles without ABS	Diesel	FWD	1588	37	50	08.83-10.91	■
1.6 D (JP)	vehicles without ABS	Diesel	FWD	1588	40	54	08.83-10.91	■
1.6 D (ME)	vehicles without ABS	Diesel	FWD	1588	40	54	08.83-10.91	■
1.6 TD (1V)	vehicles without ABS	Diesel	FWD	1588	44	60	08.89-10.91	■
1.6 TD (JR)	vehicles without ABS	Diesel	FWD	1588	51	70	08.83-10.91	■
1.6 TD (MF)	vehicles without ABS	Diesel	FWD	1588	51	70	08.83-10.91	■
1.6 TD	vehicles without ABS	Diesel	RWD	1588	55	75	08.83-07.85	■
1.6 TD (RA)	vehicles without ABS	Diesel	FWD	1588	59	80	04.89-10.91	■
1.6 TD (SB)	vehicles without ABS	Diesel	FWD	1588	59	80	04.89-10.91	■
GOLF II Furgoneta (19E, 1G1) 08.83-07.91					Hatchback Van (Compact car-C Segment)			
1.3 (HK)		Gasolina	FWD	1272	40	54	08.83-07.90	■
1.3 (MH)		Gasolina	FWD	1272	40	54	08.83-07.90	■
1.3 (NZ)		Gasolina	FWD	1272	40	54	08.83-07.90	■
1.6 D (JP)		Diesel	FWD	1588	40	54	08.83-07.91	■
JETTA I / ATLANTIC (16) 08.78-12.87					Saloon (Compact car-C Segment)			
1.1 (GG)		Gasolina	FWD	1093	37	50	08.79-02.84	■
1.3 (GS)		Gasolina	FWD	1272	43	58	08.82-02.84	■
1.3 (GF)		Gasolina	FWD	1272	44	60	08.79-02.84	■
1.6 (EM)		Gasolina	FWD	1588	55	75	08.81-07.83	■
1.5 D (CK)		Diesel	FWD	1471	37	50	08.78-07.80	■
1.6 D (CR)		Diesel	FWD	1588	40	54	08.80-02.84	■
1.6 D (JK)		Diesel	FWD	1588	40	54	08.80-02.84	■

LISTA DE APLICACIONES - BUYERS GUIDE

JETTA II (19E, 1G2, 165) 08.83-12.92					Saloon (Compact car-C Segment)			
1.3 (HK)		Gasolina	FWD	1272	40	55	01.84-06.87	■
1.3 (MH)		Gasolina	FWD	1272	40	55	01.84-06.87	■
1.3 Cat (2G)	vehicles without ABS	Gasolina	FWD	1272	40	55	06.87-12.91	■
1.3 Cat (MH)	vehicles without ABS	Gasolina	FWD	1272	40	55	06.87-12.91	■
1.3 Cat (NZ)	vehicles without ABS	Gasolina	FWD	1272	40	55	06.87-12.91	■
1.3 (GT)	vehicles without ABS	Gasolina	FWD	1272	43	58	01.84-10.86	■
1.6 D (JP)	vehicles without ABS	Diesel	FWD	1588	40	54	01.84-10.91	■
1.6 D (ME)	vehicles without ABS	Diesel	FWD	1588	40	54	01.84-10.91	■
PASSAT B1 / DASHER (32) 05.73-07.81					Hatchback (Large family car-D Segment)			
1.3 (FY)		Gasolina	FWD	1272	40	55	05.73-07.80	■
1.3 (ZA)		Gasolina	FWD	1297	40	55	05.73-01.78	■
1.3 (ZF)		Gasolina	FWD	1297	44	60	05.73-01.78	■
1.5 D (CK)		Diesel	FWD	1471	37	50	08.77-07.80	■
PASSAT B2 / CARAT / CORSAR / QUANTUM / SANTANA (32B) 09.79-07.89					Hatchback (Large family car-D Segment)			
1.6 D (CR)		Diesel	FWD	1588	40	54	08.80-03.88	■
1.6 D (JK)		Diesel	FWD	1588	40	54	08.80-03.88	■
PASSAT B2 Variant / CARAT / CORSAR / QUANTUM (33B) 08.80-06.89					Estate (Large family car-D Segment)			
1.8 Syncro (DS)		Gasolina	4WD	1781	66	90	01.86-03.88	■
1.8 Syncro (JN)		Gasolina	4WD	1781	66	90	01.86-03.88	■
2.0 Syncro (JS)		Gasolina	4WD	1994	85	116	05.84-03.88	■
2.2 Syncro (JT)		Gasolina	4WD	2226	88	120	08.85-03.88	■
2.2 Syncro (KX)		Gasolina	4WD	2226	88	120	08.85-03.88	■
2.2 Syncro (HY)		Gasolina	4WD	2226	100	136	08.84-07.88	■
PASSAT B3/B4 (3A2, 35I) 02.88-12.97					Saloon (Large family car-D Segment)			
1.8 G60 Syncro (PG)		Gasolina	4WD	1781	118	160	08.88-08.96	■
2.0		Gasolina	FWD	1984	81	110	09.89-07.92	■
2.0 Syncro (2E)		Gasolina	4WD	1984	85	115	10.90-08.96	■
2.0 Syncro (ADY)		Gasolina	4WD	1984	85	115	10.90-08.96	■
2.0 Syncro (AGG)		Gasolina	4WD	1984	85	115	10.90-08.96	■
PASSAT B3/B4 Variant (3A5, 35I) 02.88-06.97					Estate (Large family car-D Segment)			
1.8 G60 Syncro (PG)		Gasolina	4WD	1781	118	160	08.88-05.97	■
2.0		Gasolina	FWD	1984	81	110	09.89-07.92	■
2.0 Syncro (2E)	vehicles with ABS	Gasolina	4WD	1984	85	115	03.90-12.96	■
2.0 Syncro (ADY)	vehicles with ABS	Gasolina	4WD	1984	85	115	03.90-12.96	■
2.0 Syncro (AGG)	vehicles with ABS	Gasolina	4WD	1984	85	115	03.90-12.96	■
POLO II (86C, 80) 10.81-09.94					Coupe (Supermini car-B Segment)			
1.0 (GL)		Gasolina	FWD	1043	29	40	05.82-10.86	■
1.0 (HZ)		Gasolina	FWD	1043	33	45	08.85-01.92	■
1.0 Cat (AAK)		Gasolina	FWD	1043	33	45	08.89-09.94	■
1.0 Cat (AAU)		Gasolina	FWD	1043	33	45	08.89-09.94	■
1.0 Cat (ACM)		Gasolina	FWD	1043	33	45	08.89-09.94	■
1.1 (HB)		Gasolina	FWD	1093	37	50	10.81-07.83	■
1.3 (HK)		Gasolina	FWD	1272	40	55	08.83-06.87	■
1.3 (MH)		Gasolina	FWD	1272	40	55	08.83-06.87	■
1.3 Cat (2G)		Gasolina	FWD	1272	40	55	07.87-08.94	■
1.3 Cat (AAV)		Gasolina	FWD	1272	40	55	07.87-08.94	■
1.3 Cat (MH)		Gasolina	FWD	1272	40	55	07.87-08.94	■

LISTA DE APLICACIONES - BUYERS GUIDE

1.3 Cat (NZ)		Gasolina	FWD	1272	40	55	07.87-08.94	■
1.3 (GT)		Gasolina	FWD	1272	43	58	08.82-07.88	■
1.3 (HH)		Gasolina	FWD	1272	44	60	10.81-07.83	■
1.3 (GK)		Gasolina	FWD	1272	55	75	09.82-09.89	■
1.3 Cat (3F)		Gasolina	FWD	1272	55	75	10.89-09.94	■
1.3 (3F)		Gasolina	FWD	1272	57	78	03.91-09.94	■
1.3 G40 (PY)		Gasolina	FWD	1272	83	113	08.90-09.94	■
1.3 G40 (PY)		Gasolina	FWD	1272	85	115	01.87-08.90	■
1.3 D (MN)		Diesel	FWD	1272	33	45	08.86-08.90	■
1.4 D (1W)		Diesel	FWD	1398	35	48	08.90-09.94	■
POLO II (86CF) 08.92-07.94					Hatchback Van (LCVs-N1 Segment)			
1.0 (AAU)		Gasolina	FWD	1043	33	45	08.92-07.94	■
1.3 (AAV)		Gasolina	FWD	1272	40	54	08.92-07.94	■
1.4 D (1W)		Diesel	FWD	1398	35	48	08.92-07.94	■
POLO II (86C, 80) 10.81-09.94					Hatchback (Supermini car-B Segment)			
0.9 (HA)		Gasolina	FWD	895	29	39	10.81-12.81	■
1.0 (GL)		Gasolina	FWD	1043	29	40	10.81-10.86	■
1.0 (HZ)		Gasolina	FWD	1043	33	45	08.85-01.92	■
1.0 Cat (AAK)		Gasolina	FWD	1043	33	45	08.89-09.94	■
1.0 Cat (AAU)		Gasolina	FWD	1043	33	45	08.89-09.94	■
1.0 Cat (ACM)		Gasolina	FWD	1043	33	45	08.89-09.94	■
1.1 (HB)		Gasolina	FWD	1093	37	50	10.81-09.89	■
1.3 (HW)		Gasolina	FWD	1272	37	50	08.83-07.85	■
1.3 (HK)		Gasolina	FWD	1272	40	55	08.83-07.88	■
1.3 (MH)		Gasolina	FWD	1272	40	55	08.83-07.88	■
1.3 Cat (2G)		Gasolina	FWD	1272	40	55	07.87-09.94	■
1.3 Cat (AAV)		Gasolina	FWD	1272	40	55	07.87-09.94	■
1.3 Cat (MH)		Gasolina	FWD	1272	40	55	07.87-09.94	■
1.3 Cat (NZ)		Gasolina	FWD	1272	40	55	07.87-09.94	■
1.3 (GT)		Gasolina	FWD	1272	43	58	08.82-07.88	■
1.3 (HJ)		Gasolina	FWD	1272	43	58	08.82-07.88	■
1.3 (HH)		Gasolina	FWD	1272	44	60	10.81-07.83	■
1.3 (GK)		Gasolina	FWD	1272	55	75	09.82-09.89	■
1.3 Cat (3F)		Gasolina	FWD	1272	55	75	10.89-03.91	■
1.3 (3F)		Gasolina	FWD	1272	56	76	10.90-08.94	■
1.3 D (MN)		Diesel	FWD	1272	33	45	08.86-07.90	■
1.4 D (1W)		Diesel	FWD	1398	35	48	10.90-09.94	■
POLO II (86C, 80) 01.85-09.94					Saloon (Supermini car-B Segment)			
1.0 (GL)		Gasolina	FWD	1043	29	40	01.85-10.86	■
1.0 (AAK)		Gasolina	FWD	1043	33	45	01.85-09.94	■
1.0 (AAU)		Gasolina	FWD	1043	33	45	01.85-09.94	■
1.0 (ACM)		Gasolina	FWD	1043	33	45	01.85-09.94	■
1.3 (HK)		Gasolina	FWD	1272	40	55	01.85-07.87	■
1.3 (MH)		Gasolina	FWD	1272	40	55	01.85-07.87	■
1.3 Cat (MH)		Gasolina	FWD	1272	40	55	07.87-09.94	■
1.3 Cat (NZ)		Gasolina	FWD	1272	40	55	07.87-09.94	■
1.3 D (MN)		Diesel	FWD	1272	33	45	08.86-12.88	■
1.4 D (1W)		Diesel	FWD	1398	35	48	10.90-09.94	■
POLO III CLASSIC / DERBY / FLIGHT (6V2) 01.95-11.09					Saloon (Supermini car-B Segment)			
54 1.4 (ANX)		Gasolina	FWD	1390	40	54	01.98-08.99	■

LISTA DE APLICACIONES - BUYERS GUIDE

60 1.4 (AEX)	-05/96, vehicles without ABS	Gasolina	FWD	1390	44	60	12.95-09.01	■
60 1.4 (AKK)	-05/96, vehicles without ABS	Gasolina	FWD	1390	44	60	12.95-09.01	■
60 1.4 (AKV)	-05/96, vehicles without ABS	Gasolina	FWD	1390	44	60	12.95-09.01	■
60 1.4 (ANW)	-05/96, vehicles without ABS	Gasolina	FWD	1390	44	60	12.95-09.01	■
60 1.4 (APQ)	-05/96, vehicles without ABS	Gasolina	FWD	1390	44	60	12.95-09.01	■
60 1.4 (AUD)	-05/96, vehicles without ABS	Gasolina	FWD	1390	44	60	12.95-09.01	■
1.4		Gasolina	FWD	1390	62	84	05.96-07.02	■
1.6		Gasolina	FWD	1595	65	88	05.96-09.01	■
90 1.8 (ABS)		Gasolina	FWD	1781	66	90	01.97-09.01	■
90 1.8 (ADD)		Gasolina	FWD	1781	66	90	01.97-09.01	■
90 1.8 (ADZ)		Gasolina	FWD	1781	66	90	01.97-09.01	■
2.0 (ADC)		Gasolina	FWD	1984	85	116	08.99-09.01	■