

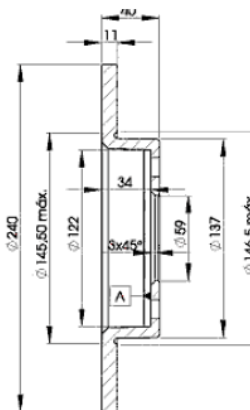
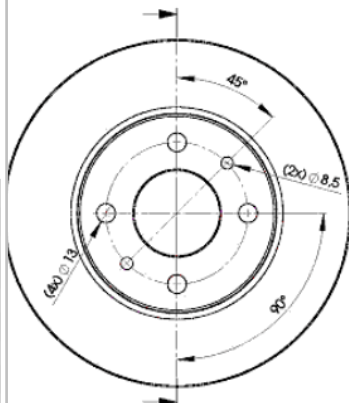
LISTA DE APLICACIONES - BUYERS GUIDE

78BD3465-2



Weight: 6.980

O.E.M.	MAKE
4 640 396 0	FIAT
51885456	ABARTH
5741447	ABARTH
6 057 633 5	ALFA ROMEO
6 080 034 5	ALFA ROMEO
6 080 511 7	ALFA ROMEO
6 081 187 9	FIAT
7 163 465	FIAT
7 173 842 1	FIAT
7 173 957 2	ALFA ROMEO
7 566 931	FIAT
7 645 054	FIAT
7 663 465	LANCIA
7 685 656	FIAT



78BD3465-2

E1 90R-02C0415/0028



Ø240x11x40

MAKE
ABARTH
ALFA ROMEO
FIAT
FORD
LANCIA
LEXUS
SAAB
ZASTAVA



Trac.	CC	Kw	CV
-------	----	----	----



Front / Rear

ABARTH

500 / 595 / 695 01.08-

Hatchback (City car-A Segment)

1.4 (312.AXD1A) (312 A1.000)	not sport chassis	Gasolina	FWD	1368	99	135	08.08-	■
1.4 (312.AXF1A, 312.AXF11, 312.AXD1A) (312 A3.000)		Gasolina	FWD	1368	103	140	05.10-	■
1.4 (312.AXT1A)	not sport chassis	Gasolina	FWD	1368	140	190	08.08-	■

500C / 595C / 695C 05.08-

Convertible (City car-A Segment)

1.4 (312.AXD1A) (312 A1.000)		Gasolina	FWD	1368	99	135	05.08-	■
1.4 (312.AXF1A, 312.AXF11, 312.AXD1A) (312 A1.000)		Gasolina	FWD	1368	103	140	09.09-	■
1.4 (312.AXF1A, 312.AXF11, 312.AXD1A) (312 A3.000)		Gasolina	FWD	1368	103	140	09.09-	■

ALFA ROMEO

145 (3 door) (930_) 07.94-01.01

Hatchback (Compact car-C Segment)

1.4 i.e. 16V T.S. (930.A3A) (AR 33503)		Gasolina	FWD	1370	76	103	12.96-01.01	■
1.4 i.e. 16V T.S. (930.A3A) (AR 38501)		Gasolina	FWD	1370	76	103	12.96-01.01	■
1.6 16V T.S. (930.A2C) (AR 32102)		Gasolina	FWD	1598	82	112	09.97-12.00	■
1.6 i.e. 16V T.S. (930.A2) (AR 38201)		Gasolina	FWD	1598	88	120	12.96-01.01	■
1.6 i.e. 16V T.S. (930.A2) (AR 67601)		Gasolina	FWD	1598	88	120	12.96-01.01	■
1.8 i.e. 16V T.S. (930.A1A) (AR 38401)		Gasolina	FWD	1747	103	140	12.96-12.98	■
1.8 i.e. 16V T.S. (930.A1A) (AR 67106)		Gasolina	FWD	1747	103	140	12.96-12.98	■
1.8 i.e. 16V T.S. (930.A1A) (AR 67199)		Gasolina	FWD	1747	103	140	12.96-12.98	■
1.8 i.e. 16V (930.A1A) (AR 32201)		Gasolina	FWD	1747	106	144	03.98-01.01	■
2.0 16V T.S. (930.A5) (AR 67204)		Gasolina	FWD	1970	110	150	10.95-01.01	■
2.0 16V (930.A5) (AR 32301)		Gasolina	FWD	1970	114	155	03.98-01.01	■

LISTA DE APLICACIONES - BUYERS GUIDE

					Hatchback (Compact car-C Segment)			
146 (5 door) (930_) 12.94-10.01								
1.4 i.e. (930.B3) (AR 33501)		Gasolina	FWD	1351	66	90	12.94-12.96	■
1.6 i.e. (930.B2) (AR 33201)		Gasolina	FWD	1596	76	103	12.94-12.96	■
1.8 i.e. 16V T.S. (930.B1A) (AR 38401)		Gasolina	FWD	1747	103	140	11.96-01.01	■
1.8 i.e. 16V T.S. (930.B1A) (AR 67106)		Gasolina	FWD	1747	103	140	11.96-01.01	■
1.8 i.e. 16V T.S. (930.B1A) (AR 32201)		Gasolina	FWD	1747	106	144	03.98-01.01	■
2.0 16V T.S. (930.B5) (AR 67204)		Gasolina	FWD	1970	110	150	10.95-01.01	■
2.0 16V (930.B5) (AR 32301)		Gasolina	FWD	1970	114	155	03.97-10.01	■
1.9 JTD (930.B4B) (AR 32302)		Diesel	FWD	1910	77	105	02.99-01.01	■
155 (167_) 01.92-12.97					Saloon (Compact executive car-D Segment)			
1.6 16V T.S. (167.A6A) (AR 67601)		Gasolina	FWD	1598	88	120	05.96-12.97	■
1.7 T.S. 16V (167.A4N) (AR 67106)		Gasolina	FWD	1747	103	140	05.96-12.97	■
1.7 T.S. (167.A4G) (AR 67103)		Gasolina	FWD	1748	83	113	04.93-04.96	■
1.7 T.S. (167.A4D, 167.A4H) (AR 67105)		Gasolina	FWD	1748	85	115	04.93-04.96	■
1.8 T.S. (167.A4C, 167.A) (AR 67402)		Gasolina	FWD	1756	77	105	02.92-12.97	■
1.8 T.S. Sport (167.A4A, 167.A4C, 167.A4E) (AR 67101)		Gasolina	FWD	1773	93	127	03.92-12.96	■
1.8 T.S. Sport (167.A4A, 167.A4C, 167.A4E) (AR 67102)		Gasolina	FWD	1773	93	127	03.92-12.96	■
1.8 T.S. (167A4) (AR 67101)		Gasolina	FWD	1773	95	129	02.92-05.94	■
2.0 T.S. 16V (167.A2G) (AR 67204)		Gasolina	FWD	1970	110	150	03.95-12.97	■
2.0 T.S. 16V (167.A2G) (AR 67299)		Gasolina	FWD	1970	110	150	03.95-12.97	■
2.0 T.S. (167.A2A, 167.A2D) (AR 67201)		Gasolina	FWD	1995	104	141	02.92-05.95	■
2.0 T.S. (167.A2A, 167.A2D) (AR 67202)		Gasolina	FWD	1995	104	141	02.92-05.95	■
2.0 T.S. (167.A2D) (AR 67201)		Gasolina	FWD	1995	106	144	02.92-01.95	■
2.0 T.S. (167.A2D) (AR 67202)		Gasolina	FWD	1995	106	144	02.92-01.95	■
2.0 16V Turbo Q4 (167.A2B, 167.A2C, 167.A2E) (AR 67203)		Gasolina	4WD	1995	137	186	01.92-12.97	■
2.0 16V Turbo Q4 (167.A2B, 167.A2C, 167.A2E) (AR 67203)		Gasolina	4WD	1995	140	190	03.92-12.97	■
2.5 V6 (167.A1C, 167.A1E) (AR 67302)		Gasolina	FWD	2492	120	163	09.92-12.97	■
2.5 V6 (167.A1C, 167.A1E) (AR 67303)		Gasolina	FWD	2492	120	163	09.92-12.97	■
2.5 V6 (167.A1C, 167.A1E) (AR 67301)		Gasolina	FWD	2492	121	165	03.92-05.95	■
1.9 TD (167.A3B, 167.A3) (AR 67501)		Diesel	FWD	1929	66	90	04.93-12.97	■
2.5 TD (167.A1A, 167.A1G) (VM 07 B)		Diesel	FWD	2499	92	125	04.93-12.97	■
2.5 TD (167.A1A, 167.A1G) (VM 31 B)		Diesel	FWD	2499	92	125	04.93-12.97	■
33 (905_) 05.83-12.93					Hatchback (Compact car-C Segment)			
1.7 i.e. (905.A3D) (AR 30558)		Gasolina	FWD	1712	77	105	09.88-12.89	■
1.7 QV (905.A3) (AR 30550)		Gasolina	FWD	1712	84	114	03.88-12.89	■
1.7 (905A3) (AR 30550)		Gasolina	FWD	1712	87	118	01.86-06.90	■
1.7 (905A2A) (AR 30550)	vehicles with ABS	Gasolina	FWD	1712	95	129	01.86-12.89	■
33 II (907_) 01.90-09.94					Hatchback (Compact car-C Segment)			
1.4 i.e. (907.A3A, 907.A3B) (AR 30753)		Gasolina	FWD	1351	66	90	06.91-09.94	■
1.4 i.e. (907.A3A, 907.A3B) (AR 30755)		Gasolina	FWD	1351	66	90	06.91-09.94	■
1.5 i.e. (907A2A) (AR 30750)		Gasolina	FWD	1490	74	101	07.90-08.91	■
1.7 i.e. (907.A1A) (AR 30737 A)		Gasolina	FWD	1712	77	105	04.92-09.94	■
1.7 i.e. (907.A1A) (AR 30736)		Gasolina	FWD	1712	79	107	01.90-09.94	■
1.7 i.e. (907.A1A) (AR 30737)		Gasolina	FWD	1712	79	107	01.90-09.94	■
1.7 i.e. 4x4 (907.A1G) (AR 30736)		Gasolina	4WD	1712	79	107	01.90-09.94	■
1.7 i.e. 4x4 (907.A1G) (AR 30737)		Gasolina	4WD	1712	79	107	01.90-09.94	■
1.7 16V (907.A1C) (AR 30747)		Gasolina	FWD	1712	95	129	01.90-09.94	■

LISTA DE APLICACIONES - BUYERS GUIDE

1.7 16V 4x4 (907.A1G) (AR 30747)		Gasolina	4WD	1712	95	129	01.90-09.94	■
1.7 16V (907.A1C) (AR 30747)		Gasolina	FWD	1712	97	132	01.90-03.92	■
1.7 16V 4x4 (907.A1G) (AR 30747)		Gasolina	4WD	1712	97	132	01.90-09.94	■
1.7 16V (907.A1B) (AR 30746)		Gasolina	FWD	1712	101	137	01.90-03.92	■
1.7 16V 4x4 (907A1F) (AR 30746)		Gasolina	4WD	1712	101	137	01.90-09.94	■
33 II Sport Wagon (907_) 01.90-09.94					Estate (Compact car-C Segment)			
1.5 i.e (907B2B) (AR 30751)		Gasolina	FWD	1490	71	97	01.90-09.94	■
1.7 i.e. (907.B1A) (AR 30737)	vehicles with ABS	Gasolina	FWD	1712	77	105	04.92-09.94	■
1.7 i.e. 4x4 (907B1D) (AR 30737)		Gasolina	4WD	1712	77	105	04.92-09.94	■
1.7 i.e. (907.B1A) (AR 30736)		Gasolina	FWD	1712	79	107	01.90-03.92	■
1.7 i.e. (907.B1A) (AR 30737)		Gasolina	FWD	1712	79	107	01.90-03.92	■
1.7 i.e. 4x4 (907.B1E) (AR 30736)		Gasolina	4WD	1712	79	107	01.90-03.92	■
1.7 i.e. 4x4 (907.B1E) (AR 30737)		Gasolina	4WD	1712	79	107	01.90-03.92	■
1.7 16V (907.B1G) (AR 30747)	vehicles with ABS	Gasolina	FWD	1712	95	129	01.90-09.94	■
1.7 16V 4x4 (907.B1H) (AR 30747)		Gasolina	4WD	1712	95	129	01.90-09.94	■
1.7 16V (907.B1G) (AR 30747)	vehicles with ABS	Gasolina	FWD	1712	97	132	01.90-09.94	■
1.7 16V 4x4 (907.B1H) (AR 30747)	vehicles with ABS	Gasolina	4WD	1712	97	132	01.90-03.92	■
1.7 16V (907B1B) (AR 30746)	vehicles with ABS	Gasolina	FWD	1712	101	137	07.90-09.94	■
1.7 16V 4x4 (907B1H) (AR 30746)		Gasolina	4WD	1712	101	137	07.90-09.94	■
33 Sport Wagon (905_) 01.84-12.89					Estate (Compact car-C Segment)			
1.7 i.e. (905B3F) (AR 30558)		Gasolina	FWD	1712	77	105	09.88-12.89	■
1.7 i.e. 4x4 (905A3G, 905B3F) (AR 30558)		Gasolina	4WD	1712	77	105	09.88-12.89	■
1.7 i.e. 4x4 (905A3G, 905B3F) (AR 30737)		Gasolina	4WD	1712	77	105	09.88-12.89	■
1.7 (905B3C) (AR 30550)		Gasolina	FWD	1712	87	118	03.88-12.89	■
FIAT								
500 II (312_) 07.07-					Hatchback (City car-A Segment)			
0.9 (312AXN1A) (312 A5.000)		Gasolina	FWD	875	59	80	12.13-	■
0.9 (312AXM1B) (199 B6.000)		Gasolina	FWD	875	77	105	10.13-	■
1.2 (312AXA1A) (169 A4.000)		Gasolina	FWD	1242	51	69	07.07-	■
1.4		Gasolina	FWD	1368	65	88	01.12-	■
1.4 Flex		Gasolina	FWD	1368	65	88	01.12-	■
1.4 (312AXC1B, 312CXC1B) (169 A3.000)		Gasolina	FWD	1368	74	100	10.07-	■
1.4 (301J410) (169 A3.000)		Gasolina	FWD	1368	75	102	09.08-	■
1.4		Gasolina	FWD	1368	77	105	02.09-	■
1.4 Multiair		Gasolina	FWD	1368	77	105	08.11-	■
1.4 Abarth		Gasolina	FWD	1368	123	167	11.14-	■
1.2 LPG (312AXA1A) (169 A4.000)		Gasol./G as (LPG)	FWD	1242	51	69	12.10-	■
500 C II (312_) 09.09-					Convertible (City car-A Segment)			
0.9 (312AXM1B) (199 B6.000)		Gasolina	FWD	875	77	105	12.13-	■
1.4 (312CXC1B, 312AXC1B) (169 A3.000)		Gasolina	FWD	1368	74	100	09.09-	■
1.4 (301J410) (169 A3.000)		Gasolina	FWD	1368	75	102	09.11-	■
1.4 (301J410) (EAB)		Gasolina	FWD	1368	75	102	09.11-	■
1.3 D Multijet (312CXE1A, 312AXE1A) (199 B1.000)		Diesel	FWD	1248	70	95	09.09-	■
1.3 D Multijet (312CXE1A, 312AXE1A) (312 B1.000)		Diesel	FWD	1248	70	95	09.09-	■
BARCETTA (183_) 03.95-05.05					Convertible (Sports car-S Segment)			
1.8 16V (183 A1.000)		Gasolina	FWD	1747	96	130	04.95-05.05	■
1.8 16V (188 A6.000)		Gasolina	FWD	1747	96	130	04.95-05.05	■

LISTA DE APLICACIONES - BUYERS GUIDE

BRAVO (182_) 10.95-10.01					Hatchback (Compact car-C Segment)				
2.0 HGT 20V (182.AD) (182 A1.000)	11/96-, vehicles with ABS	Gasolina	FWD	1998	108	147	10.95-07.98	■	
2.0 HGT 20V (182AQ) (182 B7.000)		Gasolina	FWD	1998	113	154	07.98-10.01		
CINQUECENTO (170_) 07.91-07.99					Hatchback (City car-A Segment)				
0.7 i (170AD) (170 A.046)		Gasolina	FWD	704	22	30	07.94-01.98	■	
0.7 (170AA) (170 A.000)		Gasolina	FWD	704	23	31	12.91-01.96		
0.9 i.e. S (170AF, 170CF) (1170 A1.000)		Gasolina	FWD	899	29	40	07.91-07.99		
0.9 i.e. S (170AF, 170CF) (1170 A1.046)		Gasolina	FWD	899	29	40	07.91-07.99		
0.9 (170AB) (170 A1.000)		Gasolina	FWD	903	30	41	07.91-12.93		
0.9 i.e. (170AC) (170 A1.046)		Gasolina	FWD	903	30	41	07.91-09.94		
1.1 Sporting (170AH) (176 B2.000)		Gasolina	FWD	1108	40	54	10.94-01.98		
CINQUECENTO VAN (170_) 07.91-02.98					Hatchback Van (City car-A Segment)				
0.9 iE (170CF) (1170 A1.046)		Gasolina	FWD	899	29	39	07.91-02.98	■	
1.1 iE (170AH) (176 B2.000)		Gasolina	FWD	1108	40	54	10.94-02.98		
CINQUECENTO VAN (170) 07.91-02.98					Hatchback (City car-A Segment)				
0.9 (170CF)		Gasolina	FWD	899	29	40	07.91-02.98	■	
1.1 (170AH)		Gasolina	FWD	1108	40	54	10.94-02.98		
COUPE (175_) 11.93-08.00					Coupe (Sports car-S Segment)				
1.8 16V (183 A1.000)		Gasolina	FWD	1747	96	131	03.96-08.00	■	
2.0 16V (836 A3.000)		Gasolina	FWD	1995	102	139	11.93-08.96		
2.0 16V Turbo (175 A1.000)		Gasolina	FWD	1995	140	190	11.93-08.96		
2.0 20V (175AXC1A) (182 A1.000)		Gasolina	FWD	1998	108	147	08.96-09.98		
2.0 20V (182 B3.000)		Gasolina	FWD	1998	113	154	04.98-08.00		
2.0 20V Turbo (175 A3.000)		Gasolina	FWD	1998	162	220	08.96-08.00		
IDEA (350_) 12.03-					MPV (Mini MPV-M1 Segment)				
1.6 D Multijet (350 A2.000)		Diesel	FWD	1598	88	120	05.08-	■	
MAREA (185_) 05.96-12.07					Saloon (Large family car-D Segment)				
2.0 150 20V (182 A1.000)		Gasolina	FWD	1998	108	147	09.96-04.99	■	
2.0 150 20V (185 A8.000)		Gasolina	FWD	1998	110	150	01.01-05.02		
2.0 155 20V (182 B7.000)		Gasolina	FWD	1998	113	154	04.99-01.01		
2.4 TD 125 (185 A2.000)		Diesel	FWD	2387	91	125	09.96-04.99		
2.4 JTD 130 (185 A6.000)		Diesel	FWD	2387	96	130	04.99-05.02		
2.4 JTD 130 (839 A5.000)		Diesel	FWD	2387	96	130	04.99-05.02		
MAREA Weekend (185_) 09.96-12.07					Estate (Large family car-D Segment)				
2.0 150 20V (182 A1.000)		Gasolina	FWD	1998	108	147	09.96-04.99	■	
2.0 150 20V (185 A8.000)		Gasolina	FWD	1998	110	150	01.01-05.02		
2.0 155 20V (182 B7.000)		Gasolina	FWD	1998	113	154	04.99-02.03		
2.4 TD 125 (185 A2.000)		Diesel	FWD	2387	91	125	09.96-04.99		
2.4 JTD 130 (185 A6.000)		Diesel	FWD	2387	96	130	04.99-05.02		
2.4 JTD 130 (839 A5.000)		Diesel	FWD	2387	96	130	04.99-05.02		
PALIO (178_, 171_, 371_) 04.96-					Hatchback (Supermini car-B Segment)				
1.7 D (176 B3.000)		Diesel	FWD	1698	42	57	04.96-09.02	■	
PANDA II (169_) 03.04-					Hatchback Van (LCVs-N1 Segment)				
1.1 (169CXA1A) (187 A1.000)		Gasolina	FWD	1108	40	54	09.04-	■	
1.2 (188 A4.000)		Gasolina	FWD	1242	44	60	09.04-		
1.2 4x4 (188 A4.000)		Gasolina	4WD	1242	44	60	09.04-		
1.2 (169 A4.000)		Gasolina	FWD	1242	51	69	09.10-		

LISTA DE APLICACIONES - BUYERS GUIDE

1.2 4x4 (169 A4.000)		Gasolina	4WD	1242	51	69	09.10-		■
1.2 LPG (188 A4.000)		Gasol./Gas (LPG)	FWD	1242	44	60	04.09-	■	
1.2 LPG (169 A4.000)		Gasol./Gas (LPG)	FWD	1242	51	69	09.10-	■	
1.2 Natural Power (188 A4.000)		Gasol./Gas (CNG)	FWD	1242	44	60	01.07-11.09	■	
1.4 Natural Power (350 A1.000)		Gasol./Gas (CNG)	FWD	1368	57	78	10.09-		■
1.2 Bipower (169CXB1A) (188 A4.000)		Gasol./Etanol	FWD	1242	44	60	09.04-12.11	■	
1.3 D Multijet 4x4 (188 A8.000)		Diesel	4WD	1248	51	70	10.04-12.06		■
PANDA II (169_) 09.03-					Hatchback (City car-A Segment)				
1.1 (169.AXA1A) (187 A1.000)		Gasolina	FWD	1108	40	54	09.03-		■
1.2 (169.AXB11, 169.AXB1A) (188 A4.000)		Gasolina	FWD	1242	44	60	09.03-		■
1.2 4x4 (169.AXB2A) (188 A4.000)		Gasolina	4WD	1242	44	60	10.04-		■
1.2 (169AXF2A, 169AXF1A) (169 A4.000)		Gasolina	FWD	1242	51	69	03.10-08.13	■	■
1.2 4x4 (169AXF2A, 169AXF1A) (169 A4.000)		Gasolina	4WD	1242	51	69	04.10-08.13		■
1.4 (169AXE1B) (169 A3.000)		Gasolina	FWD	1368	74	100	10.06-		■
1.2 LPG (169.AXB1A) (188 A4.000)		Gasol./Gas (LPG)	FWD	1242	44	60	04.09-	■	
1.2 LPG (169CXF1A) (169 A4.000)		Gasol./Gas (LPG)	FWD	1242	51	69	11.10-08.13	■	
1.2 Natural Power (169.AXB1A) (188 A4.000)		Gasol./Gas (CNG)	FWD	1242	44	60	01.07-12.11		■
1.4 Natural Power (169AXH1A) (350 A1.000)		Gasol./Gas (CNG)	FWD	1368	57	78	09.10-08.13		■
1.3 D Multijet 4x4 (169.AXC2A) (188 A8.000)		Diesel	4WD	1248	51	70	10.04-		■
1.3 JTD Multijet 4x4 (169AXG1A, 169AXG2A) (169 A1.000)		Diesel	4WD	1248	55	75	09.10-08.13		■
1.3 JTD Multijet 4x4 (169AXG1A, 169AXG2A) (169 A5.000)		Diesel	4WD	1248	55	75	09.10-08.13		■
PANDA III (312_, 319_) 02.12-					Hatchback (City car-A Segment)				
0.9 4x4 (312PXG1A) (312 A2.000)		Gasolina	4WD	875	63	86	09.12-		■
0.9 4x4 (312PXR2B) (312 A2.000)		Gasolina	4WD	875	66	90	06.14-		■
0.9 4x4 (312PXR2B) (312 A7.000)		Gasolina	4WD	875	66	90	06.14-		■
1.3 D Multijet 4x4 (312PXU1A) (199 A1.000)		Diesel	4WD	1248	55	75	06.12-		■
1.3 D Multijet 4x4 (312PXU1A) (199 A9.000)		Diesel	4WD	1248	55	75	06.12-		■
1.3 D Multijet 4x4 (312PXU1A) (199 A9.000)		Diesel	4WD	1248	59	80	06.14-		■
1.3 D Multijet 4x4 (312PXU1A) (225 A2.000)		Diesel	4WD	1248	59	80	06.14-		■
1.3 D Multijet 4x4 (312PXU1A) (312 A8.000)		Diesel	4WD	1248	59	80	06.14-		■
1.3 D Multijet 4x4 (312PXU1A) (312 B2.000)		Diesel	4WD	1248	59	80	06.14-		■
1.3 D Multijet 4x4 (312PXU1A) (199 B1.000)		Diesel	4WD	1248	70	95	04.15-		■
1.3 D Multijet 4x4 (312PXU1A) (312 B1.000)		Diesel	4WD	1248	70	95	04.15-		■
1.3 D Multijet 4x4 (312PXU1A) (330 A1.000)		Diesel	4WD	1248	70	95	04.15-		■
PANDA III VAN (312_, 519_) 02.12-					Hatchback Van (LCVs-N1 Segment)				
0.9 4x4 (312CXG2B) (312 A2.000)		Gasolina	4WD	875	63	86	09.12-		■
1.3 D Multijet 4x4 (312CXL2A) (199 A9.000)		Diesel	4WD	1248	55	75	06.12-		■
1.3 D Multijet 4x4 (312PXU1A) (225 A2.000)		Diesel	4WD	1248	59	80	06.14-		■
PUNTO (176_) 04.94-06.00					Convertible (Supermini car-B Segment)				
60 1.2 (176 A7.000)		Gasolina	FWD	1242	43	58	04.94-06.00		■
60 1.2 (176AR_, 176BR_) (176 B1.000)		Gasolina	FWD	1242	44	60	05.95-06.00		■
60 1.2 (176AR_, 176BR_) (176 B4.000)		Gasolina	FWD	1242	44	60	05.95-06.00		■

LISTA DE APLICACIONES - BUYERS GUIDE

PUNTO (176_) 04.96-02.00					Hatchback Van (LCVs-N1 Segment)			
1.1 (176 B2.000)		Gasolina	FWD	1108	40	54	04.96-02.00	■
1.7 D (176 B3.000)		Diesel	FWD	1698	42	57	04.96-02.00	■
PUNTO (176_) 09.93-09.99					Hatchback (Supermini car-B Segment)			
55 1.1 (176 A6.000)		Gasolina	FWD	1108	40	54	09.93-09.99	■
55 1.1 (176 B2.000)		Gasolina	FWD	1108	40	54	09.93-09.99	■
60 1.2 (176 A7.000)		Gasolina	FWD	1242	43	58	01.94-09.99	■
60 1.2 (176AP, 176AR, 176AQ, 176BB) (176 B1.000)		Gasolina	FWD	1242	44	60	09.93-09.99	■
60 1.2 (176AP, 176AR, 176AQ, 176BB) (176 B4.000)		Gasolina	FWD	1242	44	60	09.93-09.99	■
75 1.2 (176 A8.000)		Gasolina	FWD	1242	54	73	10.93-09.99	■
1.4 GT Turbo (176AS_) (176 B6.000)		Gasolina	FWD	1372	96	131	09.96-07.99	■
1.4 GT Turbo (176AD_) (176 A4.000)		Gasolina	FWD	1372	98	133	10.93-03.97	■
1.7 D (176 B3.000)		Diesel	FWD	1698	42	57	04.94-09.97	■
1.7 TD (176AT) (176 B7.000)		Diesel	FWD	1698	46	63	09.96-09.99	■
1.7 TD (176 A3.000)		Diesel	FWD	1698	51	69	01.94-09.99	■
1.7 TD (176 A5.000)		Diesel	FWD	1698	52	71	01.94-09.99	■
PUNTO II (188_) 09.99-07.12					Hatchback (Supermini car-B Segment)			
1.2 60 (188.030, .050, .130, .150, .230, .250) (188 A4.000)		Gasolina	FWD	1242	44	60	09.99-12.10	■
1.8 130 HGT (188.738, .718) (183 A1.000)		Gasolina	FWD	1747	96	130	09.99-03.12	■
1.8 130 HGT (188.738, .718) (188 A6.000)		Gasolina	FWD	1747	96	130	09.99-03.12	■
1.2 BiFuel (188 A4.000)		Gasol./Gas (LPG)	FWD	1242	44	60	08.07-03.12	■
1.2 Natural Power (188BXA1A) (188 A4.000)		Gasol./Gas (CNG)	FWD	1242	38	52	04.04-04.06	■
1.2 Natural Power (188 A4.000)		Gasol./Gas (CNG)	FWD	1242	44	60	09.03-03.12	■
1.2 Bipower (188BXA1A) (188 A4.000)		Gasol./Etanol	FWD	1242	44	60	08.01-05.03	■
1.9 JTD (188 B2.000)		Diesel	FWD	1910	74	101	06.03-03.12	■
PUNTO II-III (188_) 02.00-12.10					Hatchback Van (LCVs-N1 Segment)			
1.2 60 (188 A4.000)		Gasolina	FWD	1242	44	60	02.00-10.09	■
1.2 Natural Power (188CXA1A) (188 A4.000)		Gasol./Gas (CNG)	FWD	1242	44	60	01.03-12.10	■
SEICENTO (287_) 01.98-01.10					Hatchback Van (LCVs-N1 Segment)			
0.9 (187AXA) (1170 A1.046)		Gasolina	FWD	899	29	39	01.98-01.10	■
1.1 (187CXB/C) (176 B2.000)		Gasolina	FWD	1108	40	54	01.98-01.10	■
Elettrica		Eléctrico	FWD		22	30	03.00-04.04	■
SEICENTO (187_) 11.97-01.10					Hatchback (City car-A Segment)			
0.9 (187AXA, 187AXA1A) (1170 A1.046)		Gasolina	FWD	899	29	39	11.97-12.08	■
1.1 (187AXB, 187AXB1A, 187AXC1A02) (176 B2.000)		Gasolina	FWD	1108	40	54	01.98-01.10	■
1.1 (187AXB, 187AXB1A, 187AXC1A02) (187 A1.000)		Gasolina	FWD	1108	40	54	01.98-01.10	■
Elettrica		Eléctrico	FWD		21	29	06.98-02.00	■
Elettrica (187BEA1A) (222 SE)		Eléctrico	FWD		22	30	03.00-04.04	■
Elektra (187AEA1A, 187BEA1A)		Eléctrico	FWD		30	41	01.99-01.05	■
TEMPRA (159_) 03.90-12.98					Saloon (Large family car-D Segment)			
1.4 i.e. (159.AC, 159.AX) (159 A2.000)		Gasolina	FWD	1372	51	69	04.90-08.96	■
1.4 i.e. (159.AC, 159.AX) (160 A1.046)		Gasolina	FWD	1372	51	69	04.90-08.96	■

LISTA DE APLICACIONES - BUYERS GUIDE

1.4 i.e. (159.AC, 159.AX) (836 A4.000)		Gasolina	FWD	1372	51	69	04.90-08.96	■
1.4 i.e. (159.AA) (159 A2.000)		Gasolina	FWD	1372	57	78	03.91-08.96	■
1.6 (159AS, 159AT) (159 A3.048)		Gasolina	FWD	1581	51	69	04.90-07.96	■
1.6 i.e. (159.AS, 159.AT) (159 A3.048)		Gasolina	FWD	1581	55	75	06.92-08.96	■
1.6 i.e. (159.AS, 159.AT) (835 C1.000)		Gasolina	FWD	1581	55	75	06.92-08.96	■
1.6 i.e. (159.AE) (159 A3.046)		Gasolina	FWD	1581	57	78	06.90-07.92	■
1.6 (159.AD) (159 A3.000)		Gasolina	FWD	1581	63	86	03.90-04.94	■
1.6 (159.AD) (159 B9.000)		Gasolina	FWD	1581	63	86	03.90-04.94	■
1.6 i.e. (159.AJ) (159 B9.000)		Gasolina	FWD	1581	63	87	06.94-08.96	■
1.6 i.e. (159.AJ) (159 B9.000)		Gasolina	FWD	1581	66	90	06.94-08.96	■
1.8 i.e. (159.AZ) (835 C4.000)		Gasolina	FWD	1756	66	90	09.93-08.96	■
1.8	vehicles with ABS	Gasolina	FWD	1756	71	97	07.94-12.98	■
1.8 i.e. (159.BY) (836 A5.000)	vehicles with ABS	Gasolina	FWD	1756	74	101	10.94-08.96	■
1.8 i.e. (159.AV) (835 C2.000)	vehicles with ABS	Gasolina	FWD	1756	76	103	09.93-08.96	■
1.8 i.e. (159.AN) (159 A4.046)	vehicles with ABS	Gasolina	FWD	1756	77	105	03.92-08.96	■
2.0	vehicles with ABS	Gasolina	FWD	1995	71	99	11.92-04.94	■
2.0	vehicles with ABS	Gasolina	FWD	1995	76	103	05.94-12.98	■
2.0 (159 A6.046)		Gasolina	FWD	1995	80	109	04.90-06.93	■
2.0 (159 A6.046)		Gasolina	FWD	1995	81	110	05.94-12.98	■
2.0 i.e. (159.AP) (159 A6.046)		Gasolina	FWD	1995	83	113	10.90-09.96	■
2.0 16V	vehicles with ABS	Gasolina	FWD	1995	97	132	01.94-06.98	■
2.0 Turbo	vehicles with ABS	Gasolina	FWD	1995	121	165	11.94-05.98	■
2.0	vehicles with ABS	Gasolina	FWD	1998	93	126	10.95-12.98	■
1.9 D (159.AG) (149 A1.000)		Diesel	FWD	1929	48	65	07.91-08.96	■
1.9 D (159.AG) (160 A7.000)		Diesel	FWD	1929	48	65	07.91-08.96	■
1.9 TD (159.AQ) (160 B6.046)		Diesel	FWD	1929	59	80	07.92-08.96	■
1.9 TD (159.CU, 159.AU, 159.AI, 159.BI) (160 A6.000)		Diesel	FWD	1929	66	90	05.90-08.96	■
1.9 TD (159.CU, 159.AU, 159.AI, 159.BI) (160 D1.000)		Diesel	FWD	1929	66	90	05.90-08.96	■
TEMPRA / MARENGO (159_) 04.90-07.96					Estate Van (Large family car-D Segment)			
1.4 (159AA)		Gasolina	FWD	1372	54	73	04.91-06.93	■
1.6 (159AE)		Gasolina	FWD	1581	57	77	04.91-06.93	■
1.9 D (159AG)	vehicles with ABS	Diesel	FWD	1929	48	65	06.93-07.96	■
1.9 TD (159AI, 159BI)		Diesel	FWD	1929	66	90	04.90-07.96	■
TEMPRA S.W (159_) 03.90-10.97					Estate (Large family car-D Segment)			
1.4 i.e. (159.AC, 159.AX) (159 A2.000)		Gasolina	FWD	1372	51	69	10.92-08.96	■
1.4 i.e. (159.AC, 159.AX) (160 A1.046)		Gasolina	FWD	1372	51	69	10.92-08.96	■
1.4 i.e. (159.AC, 159.AX) (836 A4.000)		Gasolina	FWD	1372	51	69	10.92-08.96	■
1.4 i.e. (159.AC) (159 A2.000)		Gasolina	FWD	1372	57	78	03.91-08.96	■
1.6 (159 A3.048)		Gasolina	FWD	1581	51	69	07.93-07.96	■
1.6 i.e. (159.AS, 159.AT) (159 A3.048)	vehicles with ABS	Gasolina	FWD	1581	55	75	10.92-08.96	■
1.6 i.e. (159.AS, 159.AT) (835 C1.000)	vehicles with ABS	Gasolina	FWD	1581	55	75	10.92-08.96	■
1.6 i.e. (159.AE) (159 A3.046)		Gasolina	FWD	1581	57	78	10.90-08.96	■
1.6 i.e. (159.AE) (835 C1.000)		Gasolina	FWD	1581	57	78	10.90-08.96	■
1.6 (159 A3.000)		Gasolina	FWD	1581	63	86	12.90-04.93	■
1.6 i.e. (159.AJ) (159 B9.000)		Gasolina	FWD	1581	66	90	06.94-08.96	■
1.8 i.e. (159.AZ) (835 C4.000)	vehicles with ABS	Gasolina	FWD	1756	66	90	09.93-08.96	■
1.8 i.e. (159.BY) (836 A5.000)	vehicles with ABS	Gasolina	FWD	1756	74	101	10.94-08.96	■
1.8 i.e. (159.AV) (835 C2.000)	vehicles with ABS	Gasolina	FWD	1756	76	103	09.93-08.96	■
1.8 i.e. (159.AN) (159 A4.046)	vehicles with ABS	Gasolina	FWD	1756	77	105	03.92-12.93	■
1.8	vehicles with ABS	Gasolina	FWD	1756	80	109	07.92-06.93	■

LISTA DE APLICACIONES - BUYERS GUIDE

1.8 i.e. (159.AM) (159 A4.000)	vehicles with ABS	Gasolina	FWD	1756	81	110	03.90-08.96	■
2.0 (159 A6.046)		Gasolina	FWD	1995	80	109	04.91-06.93	■
2.0 i.e. (159.AP) (159 A6.046)		Gasolina	FWD	1995	83	113	01.91-03.95	■
2.0 i.e. 4x4 (159.AP) (159 A6.046)		Gasolina	4WD	1995	83	113	03.92-03.95	■
1.9 D (159.AG) (149 A1.000)	vehicles with ABS	Diesel	FWD	1929	48	65	07.91-08.96	■
1.9 D (159.AG) (160 A7.000)	vehicles with ABS	Diesel	FWD	1929	48	65	07.91-08.96	■
1.9 TD (159.AQ) (160 B6.046)	vehicles with ABS	Diesel	FWD	1929	59	80	03.92-06.93	■
1.9 TD (159.AI, 159.BI, 159.CU, 159.AU) (160 A6.000)	vehicles with ABS	Diesel	FWD	1929	66	90	07.91-02.95	■
1.9 TD (159.AI, 159.BI, 159.CU, 159.AU) (160 D1.000)	vehicles with ABS	Diesel	FWD	1929	66	90	07.91-02.95	■
TIPO (160_) 07.87-10.97					Hatchback (Compact car-C Segment)			
1.1 (160.AA) (160 A3.000)		Gasolina	FWD	1108	41	56	01.88-10.91	■
1.4 i.e. (160.AP, 160.AD, 160.EA) (160 A1.046)		Gasolina	FWD	1372	51	70	05.89-04.95	■
1.4 i.e. (160.AP, 160.AD, 160.EA) (160 A1.048)		Gasolina	FWD	1372	51	70	05.89-04.95	■
1.4 i.e. (160.AP, 160.AD, 160.EA) (836 A4.000)		Gasolina	FWD	1372	51	70	05.89-04.95	■
1.4 (160.AC) (160 A1.000)		Gasolina	FWD	1372	52	71	07.87-12.89	■
1.4 (160.AC) (160 A1.048)		Gasolina	FWD	1372	52	71	07.87-12.89	■
1.4 i.e. (159 A2.000)		Gasolina	FWD	1372	57	78	05.89-04.95	■
1.6 i.e. (160.A1, 160.EC, 160.EB) (159 A3.048)		Gasolina	FWD	1581	55	75	10.92-04.95	■
1.6 i.e. (160.A1, 160.EC, 160.EB) (835 C1.000)		Gasolina	FWD	1581	55	75	10.92-04.95	■
1.6 (159 A3.046)		Gasolina	FWD	1581	56	76	03.93-10.95	■ ■
1.6 (159 A3.048)		Gasolina	FWD	1581	56	76	03.93-10.95	■ ■
1.6 (835 C1.000)		Gasolina	FWD	1581	56	76	03.93-10.95	■ ■
1.6 i.e. (160.AF) (159 A3.046)		Gasolina	FWD	1581	57	78	07.90-01.93	■
1.6 (160 A2.000)		Gasolina	FWD	1581	58	79	03.88-10.92	■ ■
1.6 (160.AE) (160 A2.000)		Gasolina	FWD	1581	61	83	01.88-10.91	■
1.6 SX DGT (159 A3.000)		Gasolina	FWD	1581	66	90	05.89-10.95	■
1.6 i.e. (149 C2.046)		Gasolina	FWD	1595	66	90	02.88-05.91	■
1.8 i.e. (835 C4.000)		Gasolina	FWD	1756	66	90	09.93-04.95	■
1.8 i.e (836 A5.000)		Gasolina	FWD	1756	71	97	03.93-04.95	■
1.8 i.e. (160.EQ, 160.AM) (159 A4.000)		Gasolina	FWD	1756	74	101	10.94-10.95	■
1.8 i.e. (160.EQ, 160.AM) (836 A5.000)		Gasolina	FWD	1756	74	101	10.94-10.95	■
1.8 i.e. (160.ED) (835 C2.000)		Gasolina	FWD	1756	76	103	04.93-04.95	■
1.8 i.e. (160.AY) (159 A4.046)		Gasolina	FWD	1756	77	105	10.90-06.93	■
1.8 i.e. (159 A4.000)		Gasolina	FWD	1756	81	110	10.90-06.93	■
1.8 i.e.16V Sport (160 A5.000)		Gasolina	FWD	1756	100	136	11.89-06.92	■
2.0 i.e. (160.AJ, 1607571) (159 A5.046)		Gasolina	FWD	1995	80	109	06.90-03.92	■
2.0 i.e. (160.AT, 160.AJ) (159 A6.046)		Gasolina	FWD	1995	83	113	03.90-04.95	■
2.0 (159 A5.046)		Gasolina	FWD	1995	85	116	10.90-10.92	■
2.0 (159 A6.046)		Gasolina	FWD	1995	85	116	10.90-10.92	■
2.0 i.e. 16V Sport (160.EF) (836 A3.000)		Gasolina	FWD	1995	102	139	03.93-04.95	■
2.0 16V (160.AV) (160 A8.046)		Gasolina	FWD	1995	107	146	07.91-04.95	■
1.7 D (160.AG) (149 B4.000)		Diesel	FWD	1697	43	58	01.88-10.94	■
1.7 D (160.AG) (149 B4.000)		Diesel	FWD	1697	45	61	01.88-10.95	■
1.9 D (149 A1.000)		Diesel	FWD	1929	48	65	07.91-08.95	■
1.9 D (160 A7.000)		Diesel	FWD	1929	48	65	07.91-08.95	■
1.9 TD (160.AW) (160 B6.046)		Diesel	FWD	1929	59	80	03.92-06.93	■
1.9 TD (160.EL, 160.GL, 160.AQ, 160.EI, 160.AR) (160 A6.000)		Diesel	FWD	1929	66	90	09.90-04.95	■
1.9 TD (160.EL, 160.GL, 160.AQ, 160.EI, 160.AR) (160 A6.046)		Diesel	FWD	1929	66	90	09.90-04.95	■
1.9 TD (160.EL, 160.GL, 160.AQ, 160.EI, 160.AR) (160 D1.000)		Diesel	FWD	1929	66	90	09.90-04.95	■

LISTA DE APLICACIONES - BUYERS GUIDE

1.9 TD (160AR) (160 A6.046)		Diesel	FWD	1929	69	94	04.90-10.92	■
FORD								
KA II (RU8) 10.08-					Hatchback (City car-A Segment)			
1.2 (169A4000)		Gasolina	FWD	1242	51	69	10.08-05.16	■
1.2 (FP4)		Gasolina	FWD	1242	51	69	10.08-05.16	■
LANCIA								
DEDRA (835_) 01.89-07.99					Saloon (Large family car-D Segment)			
1.6 i.e. (835AN) (835 C1.000)		Gasolina	FWD	1581	55	75	04.93-07.99	■
1.6 i.e. (835AB) (835 A1.046)		Gasolina	FWD	1581	57	78	08.89-03.93	■
1.6 i.e. (835AA) (835 A1.000)		Gasolina	FWD	1581	66	90	08.89-06.94	■
1.6 LE Cat (835EB) (159 B9.000)		Gasolina	FWD	1581	66	90	07.94-07.99	■
1.6 16V (835EI) (182 A4.000)		Gasolina	FWD	1581	76	103	01.96-07.99	■
1.8 16V LE (835FG) (182 A2.000)		Gasolina	FWD	1747	83	113	03.96-07.99	■
1.8 GT 16V (835EH) (183 A1.000)		Gasolina	FWD	1747	96	131	03.96-07.99	■
1.8 i.e. (835AT) (835 C5.000)		Gasolina	FWD	1756	66	90	08.93-07.99	■
1.8 i.e. (835FA) (836 A5.000)		Gasolina	FWD	1756	74	101	07.94-07.99	■
1.8 i.e. (835BD, 835AD) (835 A2.046)		Gasolina	FWD	1756	77	105	09.89-07.99	■
1.8 i.e. (835AC, 835BC) (835 A2.000)		Gasolina	FWD	1756	80	109	09.89-06.94	■
2.0 i.e. (835AL) (835 A5.046)		Gasolina	FWD	1995	83	113	09.89-07.99	■
2.0 i.e. (835AI) (835 A5.000)		Gasolina	FWD	1995	86	117	09.89-07.92	■
2.0 16V (835ED) (836 A3.000)		Gasolina	FWD	1995	102	139	07.94-07.99	■
2.0 i.e. Turbo (835AR) (835 A8.046)		Gasolina	FWD	1995	119	162	04.91-07.99	■
2.0 i.e. Turbo Integrale (835AO) (835 A7.000)		Gasolina	4WD	1995	121	165	04.90-08.91	■
2.0 HF Integrale (835AP) (835 A7.046)		Gasolina	4WD	1995	124	169	11.90-07.94	■
2.0 Turbo (835AQ) (835 A8.000)		Gasolina	FWD	1995	130	177	11.90-06.94	■
1.9 TDS (835EE, 835EF) (160 D1.000)		Diesel	FWD	1929	66	90	04.89-07.99	■
1.9 TDS (835EE, 835EF) (835 A4.000)		Diesel	FWD	1929	66	90	04.89-07.99	■
1.9 TDS (835EE, 835EF) (835 A4.046)		Diesel	FWD	1929	66	90	04.89-07.99	■
DEDRA SW (835_) 07.94-07.99					Estate (Large family car-D Segment)			
1.6 (835EB) (159 B9.000)		Gasolina	FWD	1581	66	90	10.94-07.99	■
1.6 16V (835EI) (182 A4.000)		Gasolina	FWD	1581	76	103	01.96-07.99	■
1.8 16V LE (835FG) (182 A2.000)		Gasolina	FWD	1747	83	113	03.96-07.99	■
1.8 GT 16V (835EH) (183 A1.000)		Gasolina	FWD	1747	96	131	03.96-07.99	■
1.8 i.e. (835FA) (836 A5.000)		Gasolina	FWD	1756	74	101	07.94-07.99	■
2.0 16V (835ED) (836 A3.000)		Gasolina	FWD	1995	102	139	07.94-07.99	■
2.0 Integrale (835ED) (836 A3.000)		Gasolina	4WD	1995	102	139	07.94-07.99	■
1.9 TDS (835EE, 835EF) (160 D1.000)		Diesel	FWD	1929	66	90	07.94-07.99	■
1.9 TDS (835EE, 835EF) (835 A4.000)		Diesel	FWD	1929	66	90	07.94-07.99	■
DELTA II (836_) 06.93-09.99					Hatchback (Compact car-C Segment)			
1.4 i.e. (836AF, 836AH) (160 A1.046)		Gasolina	FWD	1372	51	69	10.94-08.99	■
1.4 i.e. (836AF, 836AH) (836 A4.000)		Gasolina	FWD	1372	51	69	10.94-08.99	■
1.6 i.e. (836AD) (835 C1.000)	vehicles with ABS	Gasolina	FWD	1581	55	75	06.93-08.99	■
1.6 i.e. (836AP) (182 A6.000)		Gasolina	FWD	1581	66	90	03.96-08.99	■
1.6 i.e. 16V (836AO) (182 A4.000)		Gasolina	FWD	1581	76	103	01.96-08.99	■
1.8		Gasolina	FWD	1747	66	90	02.96-09.99	■
1.8 i.e. 16V (836AQ) (182 A2.000)		Gasolina	FWD	1747	83	113	03.96-08.99	■
1.8 i.e. 16V GT (836AR) (183 A1.000)		Gasolina	FWD	1747	96	131	03.96-08.99	■
1.8 i.e. (836AG, 836AL) (835 C4.000)		Gasolina	FWD	1756	66	90	07.94-08.99	■
1.8 i.e. (836AG, 836AL) (836 A6.000)		Gasolina	FWD	1756	66	90	07.94-08.99	■

LISTA DE APLICACIONES - BUYERS GUIDE

1.8 i.e. (836AG, 836AL) (836 C4.000)		Gasolina	FWD	1756	66	90	07.94-08.99	■
1.8 i.e. (836AE) (835 C2.000)		Gasolina	FWD	1756	76	103	06.93-08.99	■
2.0 16V (836AA, 836CA) (836 A3.000)	-03/96	Gasolina	FWD	1995	102	139	06.93-08.99	■
2.0		Gasolina	FWD	1995	108	147	11.94-04.98	■
2.0 16V Turbo (836AB) (836 A2.000)		Gasolina	FWD	1995	137	186	06.93-08.99	■
2.0 16V Turbo (836AS) (175 A4.000)		Gasolina	FWD	1995	142	193	07.96-08.99	■
1.9 TD (836AM, 836AN) (160 D1.000)		Diesel	FWD	1929	66	90	10.94-08.99	■
1.9 TD (836AM, 836AN) (835 A4.000)		Diesel	FWD	1929	66	90	10.94-08.99	■
MUSA (350_) 10.04-09.12					MPV (Mini MPV-M1 Segment)			
1.3 D Multijet (350.AXM11, 350.AXM1A, 350.AX11A) (199 B1.000)		Diesel	FWD	1248	70	95	03.09-09.12	■
1.6 D Multijet (350.AXL1A, 350.AXH1A) (350 A2.000)		Diesel	FWD	1598	85	116	07.08-09.12	■
1.6 D Multijet (350.AXL1A, 350.AXH1A) (350 A3.000)		Diesel	FWD	1598	85	116	07.08-09.12	■
1.6 D Multijet (350.AXH1A) (350 A2.000)		Diesel	FWD	1598	88	120	07.08-09.12	■
Y (840_) 11.95-09.03					Hatchback (Supermini car-B Segment)			
1.1 (840AE) (176 B2.000)		Gasolina	FWD	1108	40	54	11.95-09.03	■
1.2 (840AA, 840AF1A) (188 A4.000)		Gasolina	FWD	1242	44	60	03.96-09.03	■
1.2 (840AA, 840AF1A) (840 A3.000)		Gasolina	FWD	1242	44	60	03.96-09.03	■
Y10 (156_) 03.85-12.95					Hatchback (City car-A Segment)			
1.1 Fire (156AG) (176 B2.000)		Gasolina	FWD	1108	40	54	01.95-12.95	■
1.1 Fire A las 4 ruedas (156AG) (176 B2.000)		Gasolina	4WD	1108	40	54	01.95-12.95	■
1.1 i.e Fire (156AC) (156 C.000)		Gasolina	FWD	1108	42	57	08.89-06.92	■
1.1 i.e Fire A las 4 ruedas (156AC) (156 C.000)		Gasolina	4WD	1108	42	57	08.89-06.92	■
YPSILON II (843_) 10.03-12.11					Hatchback (Supermini car-B Segment)			
1.2 (843.AXL1A) (169 A4.000)		Gasolina	FWD	1242	51	69	08.10-12.11	■
1.2 (843.AXB1A) (188 A5.000)	vehicles with ABS	Gasolina	FWD	1242	59	80	10.03-12.11	■
1.4 16V (843.AXC11, 843.AXC1B, 843.AXC1A) (843 A 1.000)	vehicles with ABS	Gasolina	FWD	1368	70	95	10.03-12.11	■
1.4 LPG (843.AXG1A) (350 A1.000)		Gasol./G as (LPG)	FWD	1368	57	78	11.10-12.11	■
1.3 D Multijet (843.AXE11, 843.AXE1A) (199 A3.000)		Diesel	FWD	1248	66	90	09.06-12.11	■
1.3 D Multijet (843.AXH1A, 843.AXE1A) (199 A3.000)	vehicles with ABS	Diesel	FWD	1248	77	105	05.07-12.11	■
LEXUS								
NX (_Z1_) 07.14-					SUV (Luxury Crossover SUV-J Segment)			
200t AWD (AGZ15_) (8AR-FTS)	vehicles with ABS	Gasolina	4WD	1998	173	235	07.14-09.17	■
SAAB								
900 06.78-06.94					Hatchback (Compact executive car-D Segment)			
2.0 EMS (BI 20)		Gasolina	FWD	1985	87	118	09.78-08.79	■
ZASTAVA								
10 10.05-					Hatchback (Supermini car-B Segment)			
1.2 60 (188 A4.000)		Gasolina	FWD	1242	44	60	10.05-	■
101 06.72-12.93					Hatchback (Compact car-C Segment)			
1.1 (128 A.064)		Gasolina	FWD	1116	41	56	05.75-12.93	■